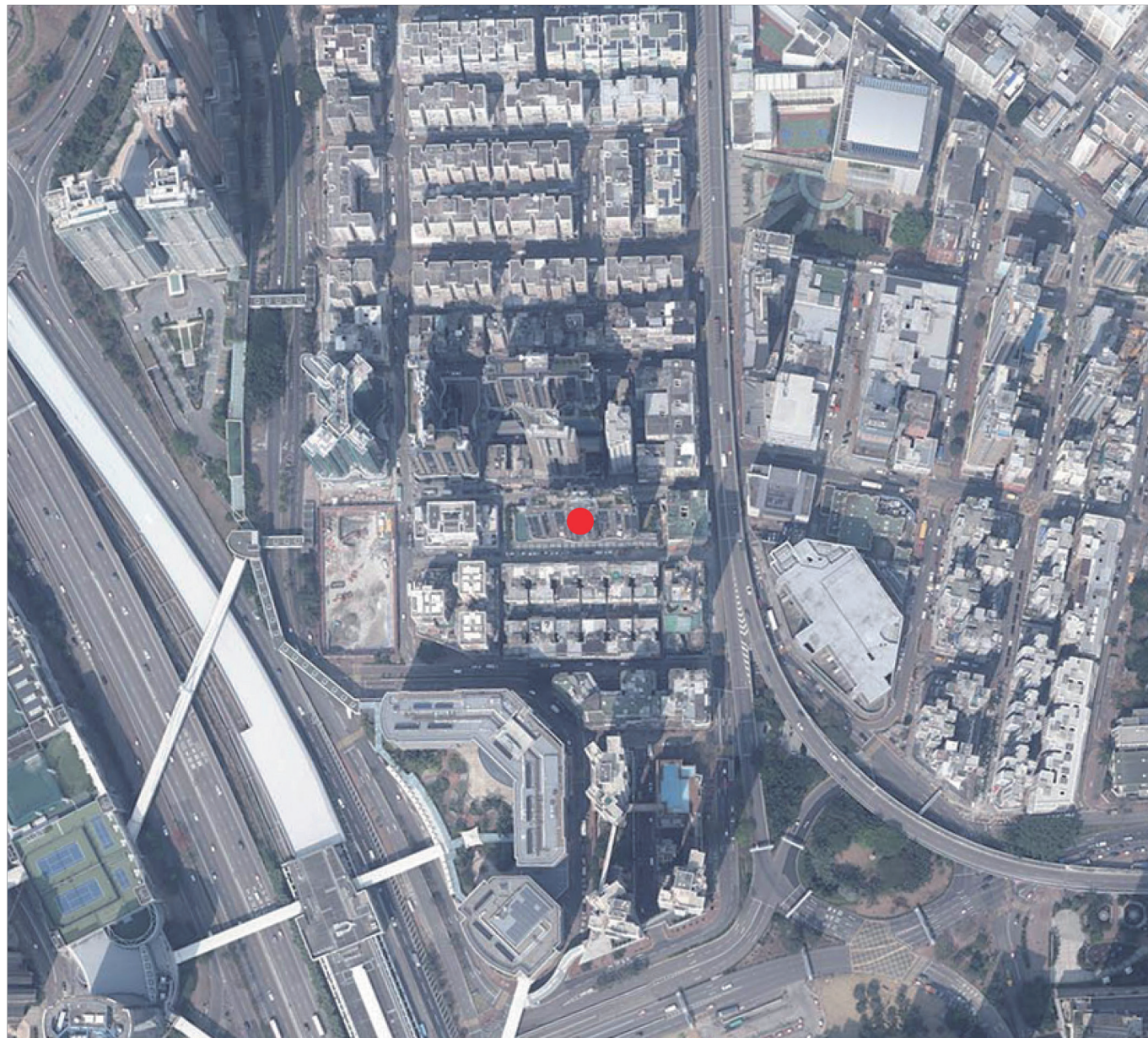


7 發展項目的鳥瞰照片 AERIAL PHOTOGRAPH OF THE DEVELOPMENT



● 發展項目的位置
Location of the Development

香港特別行政區政府地政總署測繪處版權所有，未經許可，不得複製。

Survey and Mapping Office, Lands Department, The Government of HKSAR© Copyright reserved - reproduction by permission only.

資料 / 地圖 / 鳥瞰照片由空間數據共享平台提供，香港特別行政區政府為知識產權擁有人。

The Data/Map/Aerial Photograph is/are provided by the CSDI Portal and intellectual property rights are owned by the Government of the HKSAR.

備註：因技術性問題，此鳥瞰照片所顯示的範圍超過《一手住宅物業銷售條例》的規定。

Note : Due to technical reasons, this aerial photograph has shown more than the area required under the Residential Properties (First-hand Sales) Ordinance.

摘錄自地政總署測繪處於2024年3月8日在6,000呎飛行高度拍攝之鳥瞰照片，編號為E218749C。

Adopted from part of the aerial photograph taken by the Survey and Mapping Office of the Lands Department at a flying height of 6,000 feet, Photo No. E218749C dated 8 March 2024.

7 發展項目的鳥瞰照片 AERIAL PHOTOGRAPH OF THE DEVELOPMENT



● 發展項目的位置
Location of the Development

香港特別行政區政府地政總署測繪處版權所有，未經許可，不得複製。

Survey and Mapping Office, Lands Department, The Government of HKSAR© Copyright reserved - reproduction by permission only.

資料 / 地圖 / 鳥瞰照片由空間數據共享平台提供，香港特別行政區政府為知識產權擁有人。

The Data/Map/Aerial Photograph is/are provided by the CSDI Portal and intellectual property rights are owned by the Government of the HKSAR.

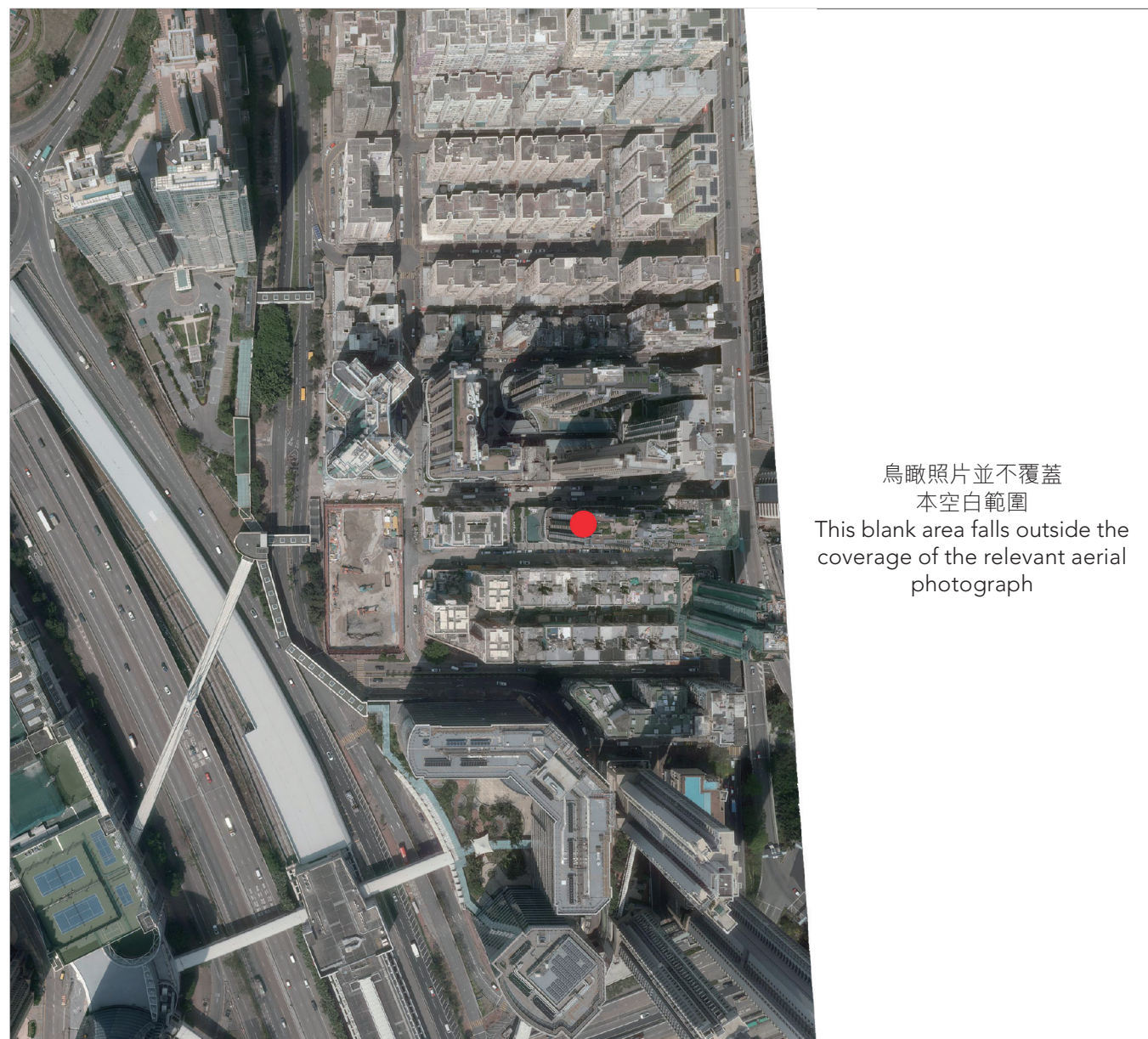
備註：因技術性問題，此鳥瞰照片所顯示的範圍超過《一手住宅物業銷售條例》的規定。

Note : Due to technical reasons, this aerial photograph has shown more than the area required under the Residential Properties (First-hand Sales) Ordinance.

摘錄自地政總署測繪處於2024年3月20日在2,000呎飛行高度拍攝之鳥瞰照片，編號為E220894C。

Adopted from part of the aerial photograph taken by the Survey and Mapping Office of the Lands Department at a flying height of 2,000 feet, Photo No. E220894C dated 20 March 2024.

7 發展項目的鳥瞰照片 AERIAL PHOTOGRAPH OF THE DEVELOPMENT



● 發展項目的位置
Location of the Development

香港特別行政區政府地政總署測繪處版權所有，未經許可，不得複製。

Survey and Mapping Office, Lands Department, The Government of HKSAR© Copyright reserved - reproduction by permission only.

資料 / 地圖 / 鳥瞰照片由空間數據共享平台提供，香港特別行政區政府為知識產權擁有人。

The Data/Map/Aerial Photograph is/are provided by the CSDI Portal and intellectual property rights are owned by the Government of the HKSAR.

備註：因技術性問題，此鳥瞰照片所顯示的範圍超過《一手住宅物業銷售條例》的規定。

Note : Due to technical reasons, this aerial photograph has shown more than the area required under the Residential Properties (First-hand Sales) Ordinance.

摘錄自地政總署測繪處於2024年3月20日在2,000呎飛行高度拍攝之鳥瞰照片，編號為E220896C。

Adopted from part of the aerial photograph taken by the Survey and Mapping Office of the Lands Department at a flying height of 2,000 feet, Photo No. E220896C dated 20 March 2024.