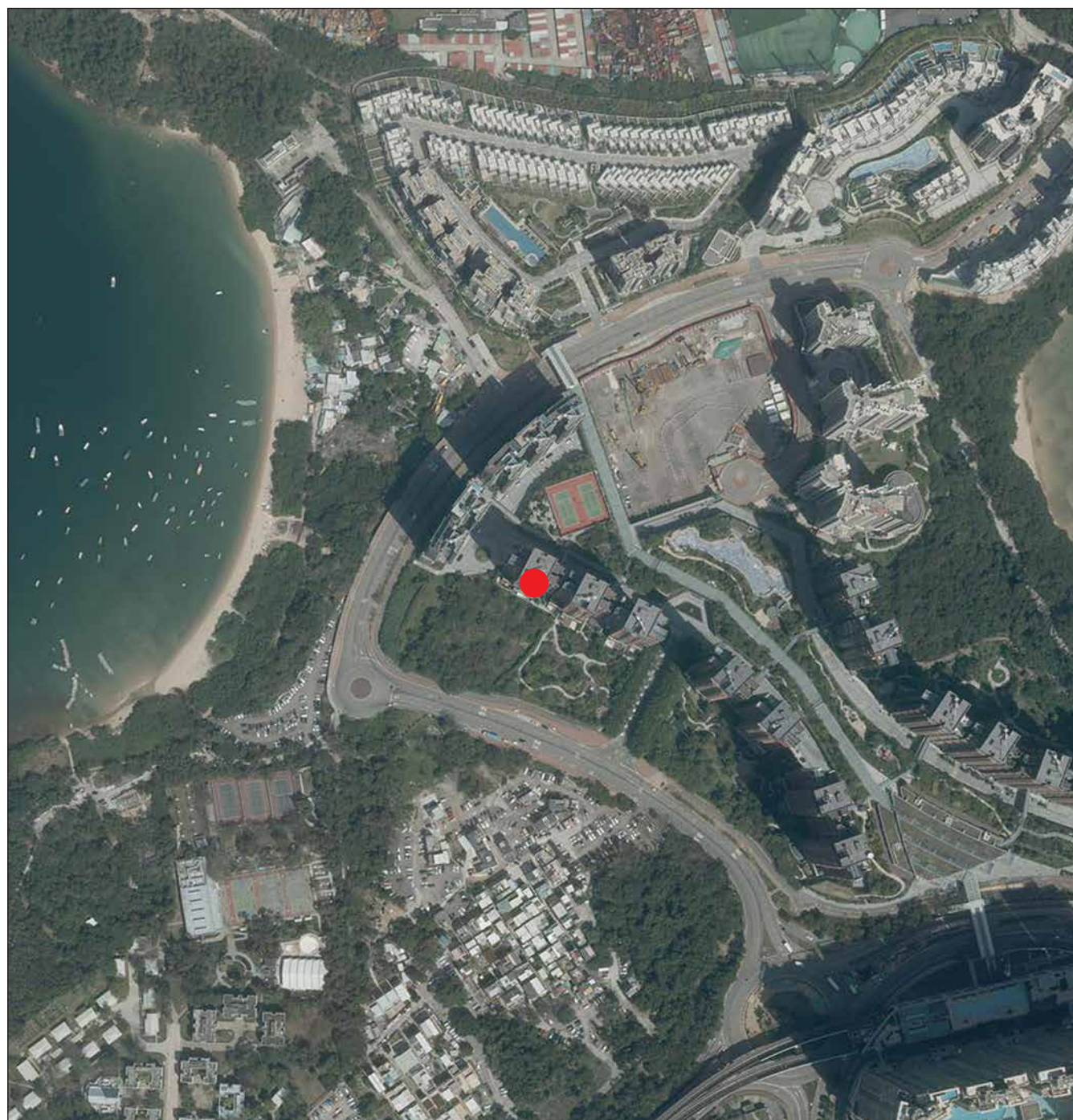


## 7. 期數的鳥瞰照片 AERIAL PHOTOGRAPH OF THE PHASE



● 期數的位置  
Location of the Phase

摘錄自地政總署測繪處於2022年3月10日在馬鞍山6,000呎飛行高度拍攝之鳥瞰照片，編號為E155004C。

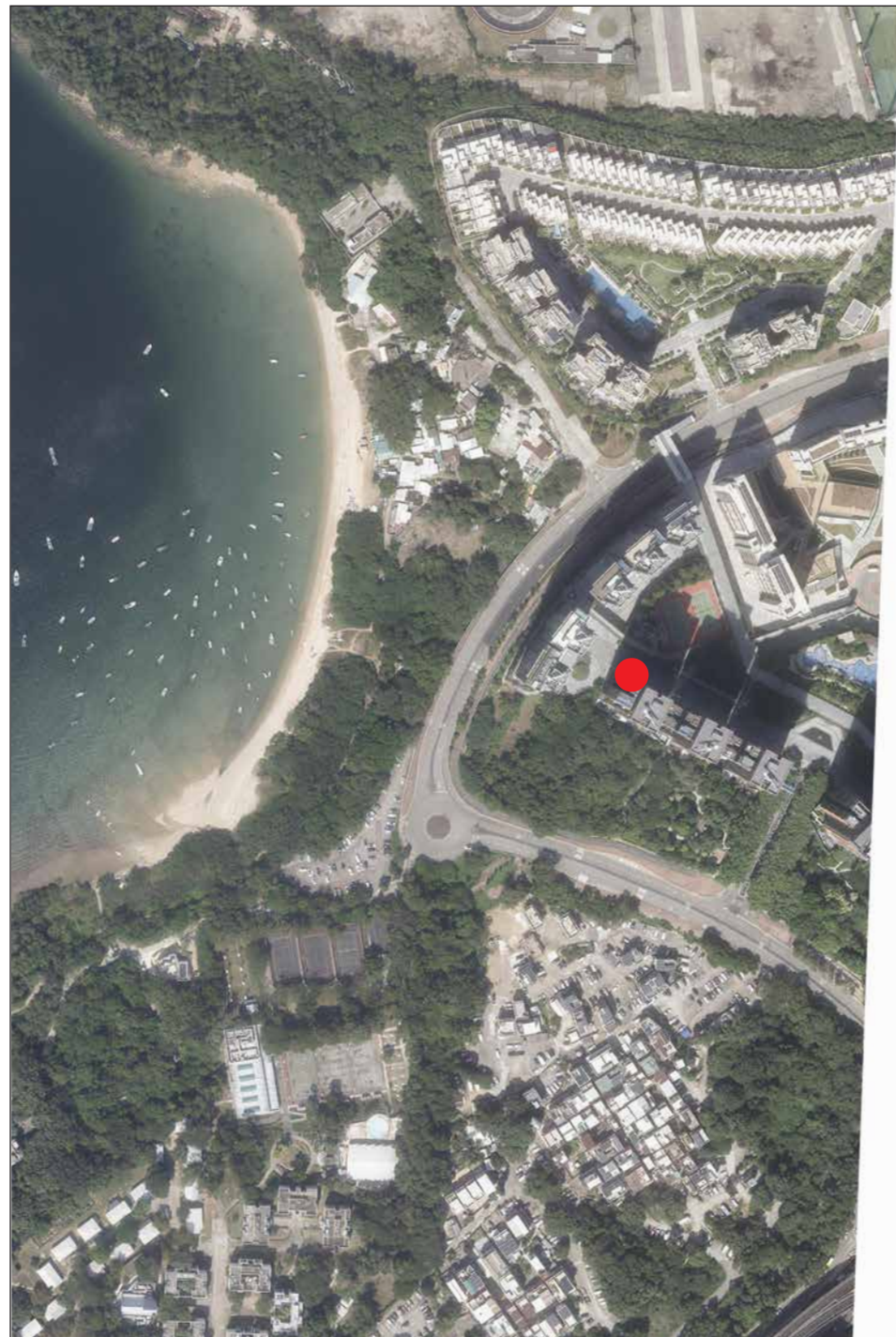
Adopted from part of the aerial photograph taken by the Survey and Mapping Office of Lands Department at a flying height 6,000 feet in Ma On Shan. Photo No. E155004C, dated 10th March 2022.

備註：因技術性問題，此鳥瞰照片所顯示的範圍超過《一手住宅物業銷售條例》的規定。

Note: Due to technical reasons, this aerial photograph has shown the area more than that required under the Residential Properties (First-hand Sales) Ordinance.

香港特別行政區政府地政總署測繪處 © 版權所有，未經許可，不得複製。

Survey and Mapping Office, Lands Department, The Government of HKSAR © Copyright reserved – reproduction by permission only.



關乎期數的鳥瞰照片  
並不覆蓋本空白範圍  
This blank area falls  
outside the coverage of  
the aerial photograph of  
the phase

● 期數的位置  
Location of the Phase

摘錄自地政總署測繪處於2024年10月24日在烏溪沙6,900呎飛行高度拍攝之鳥瞰照片，編號為E237689C。

Adopted from part of the aerial photograph taken by the Survey and Mapping Office of Lands Department at a flying height 6,900 feet in Wu Kai Sha. Photo No. E237689C, dated 24th October 2024.

備註：因技術性問題，此鳥瞰照片所顯示的範圍超過《一手住宅物業銷售條例》的規定。

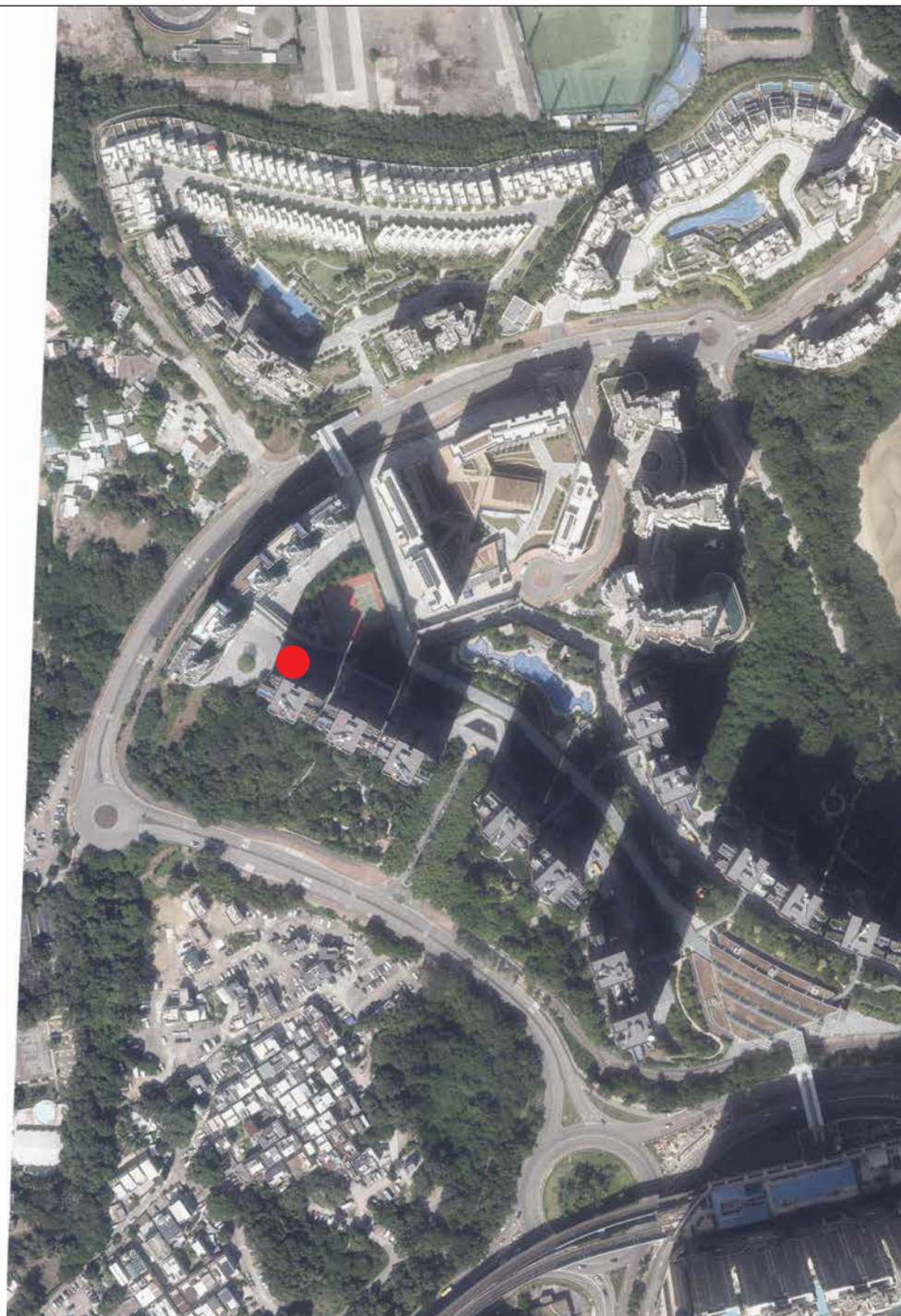
Note: Due to technical reasons, this aerial photograph has shown the area more than that required under the Residential Properties (First-hand Sales) Ordinance.

香港特別行政區政府地政總署測繪處 © 版權所有，未經許可，不得複製。

Survey and Mapping Office, Lands Department, The Government of HKSAR © Copyright reserved – reproduction by permission only.

## 7. 期數的鳥瞰照片 AERIAL PHOTOGRAPH OF THE PHASE

關乎期數的鳥瞰照片  
並不覆蓋本空白範圍  
This blank area falls  
outside the coverage of  
the aerial photograph of  
the phase



● 期數的位置  
Location of the Phase

摘錄自地政總署測繪處於2024年10月24日在烏溪沙6,900呎飛行高度拍攝之鳥瞰照片，編號為E237687C。

Adopted from part of the aerial photograph taken by the Survey and Mapping Office of Lands Department at a flying height 6,900 feet in Wu Kai Sha. Photo No. E237687C, dated 24th October 2024.

備註：因技術性問題，此鳥瞰照片所顯示的範圍超過《一手住宅物業銷售條例》的規定。  
Note: Due to technical reasons, this aerial photograph has shown the area more than that required under the Residential Properties (First-hand Sales) Ordinance.

香港特別行政區政府地政總署測繪處 © 版權所有，未經許可，不得複製。  
Survey and Mapping Office, Lands Department, The Government of HKSAR © Copyright reserved –  
reproduction by permission only.

關於期數的鳥瞰照片並不覆蓋本空白範圍  
This blank area falls outside the coverage of the aerial photograph of the phase



● 期數的位置  
Location of the Phase

摘錄自地政總署測繪處於2025年6月24日在烏溪沙6,900呎飛行高度拍攝之鳥瞰照片，編號為E258540C。

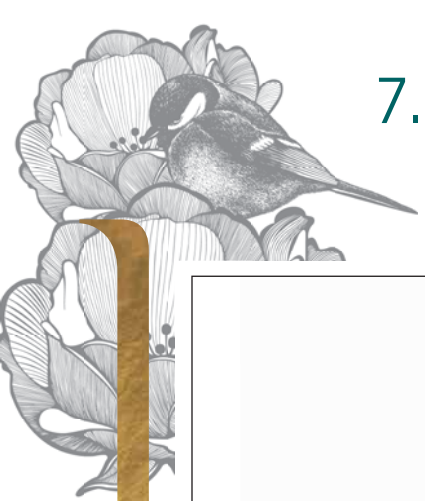
Adopted from part of the aerial photograph taken by the Survey and Mapping Office of Lands Department at a flying height 6,900 feet in Wu Kai Sha. Photo No. E258540C, dated 24th June 2025.

備註：因技術性問題，此鳥瞰照片所顯示的範圍超過《一手住宅物業銷售條例》的規定。

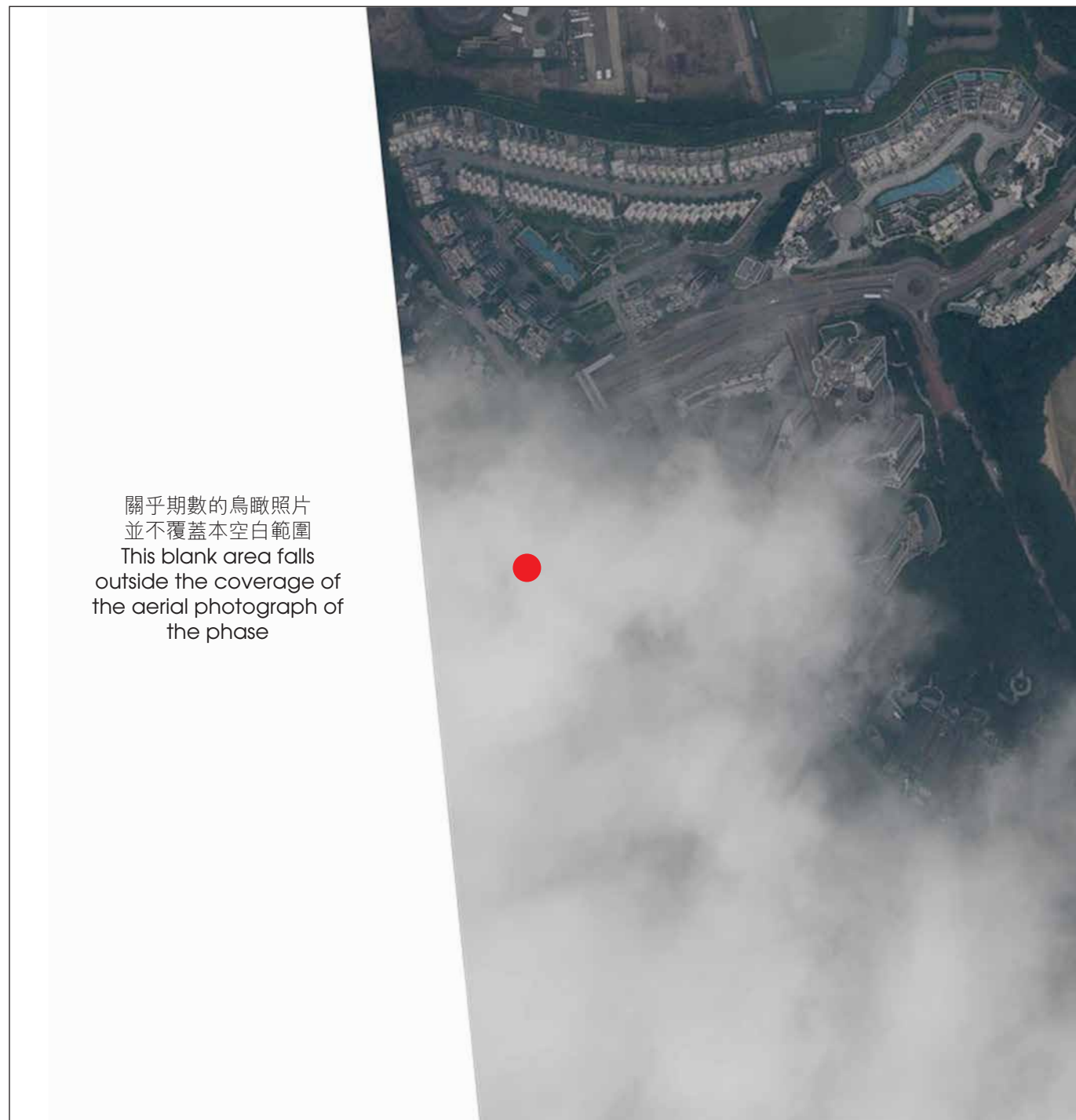
Note: Due to technical reasons, this aerial photograph has shown the area more than that required under the Residential Properties (First-hand Sales) Ordinance.

香港特別行政區政府地政總署測繪處 © 版權所有，未經許可，不得複製。

Survey and Mapping Office, Lands Department, The Government of HKSAR © Copyright reserved – reproduction by permission only.



## 7. 期數的鳥瞰照片 AERIAL PHOTOGRAPH OF THE PHASE



關乎期數的鳥瞰照片  
並不覆蓋本空白範圍  
This blank area falls  
outside the coverage of  
the aerial photograph of  
the phase

● 期數的位置  
Location of the Phase

摘錄自地政總署測繪處於2025年6月24日在烏溪沙6,900呎飛行高度拍攝之鳥瞰照片，編號為E258598C。

Adopted from part of the aerial photograph taken by the Survey and Mapping Office of Lands Department at a flying height 6,900 feet in Wu Kai Sha. Photo No. E258598C, dated 24th June 2025.

備註：因技術性問題，此鳥瞰照片所顯示的範圍超過《一手住宅物業銷售條例》的規定。  
Note: Due to technical reasons, this aerial photograph has shown the area more than that required under the Residential Properties (First-hand Sales) Ordinance.

香港特別行政區政府地政總署測繪處 © 版權所有，未經許可，不得複製。  
Survey and Mapping Office, Lands Department, The Government of HKSAR © Copyright reserved – reproduction by permission only.



關於期數的鳥瞰照片並不覆蓋本空白範圍  
This blank area falls outside the coverage of the aerial photograph of the phase

● 期數的位置  
Location of the Phase

摘錄自地政總署測繪處於2025年6月24日在烏溪沙6,900呎飛行高度拍攝之鳥瞰照片，編號為E258509C。

Adopted from part of the aerial photograph taken by the Survey and Mapping Office of Lands Department at a flying height 6,900 feet in Wu Kai Sha. Photo No. E258509C, dated 24th June 2025.

備註：因技術性問題，此鳥瞰照片所顯示的範圍超過《一手住宅物業銷售條例》的規定。

Note: Due to technical reasons, this aerial photograph has shown the area more than that required under the Residential Properties (First-hand Sales) Ordinance.

香港特別行政區政府地政總署測繪處 © 版權所有，未經許可，不得複製。

Survey and Mapping Office, Lands Department, The Government of HKSAR © Copyright reserved – reproduction by permission only.