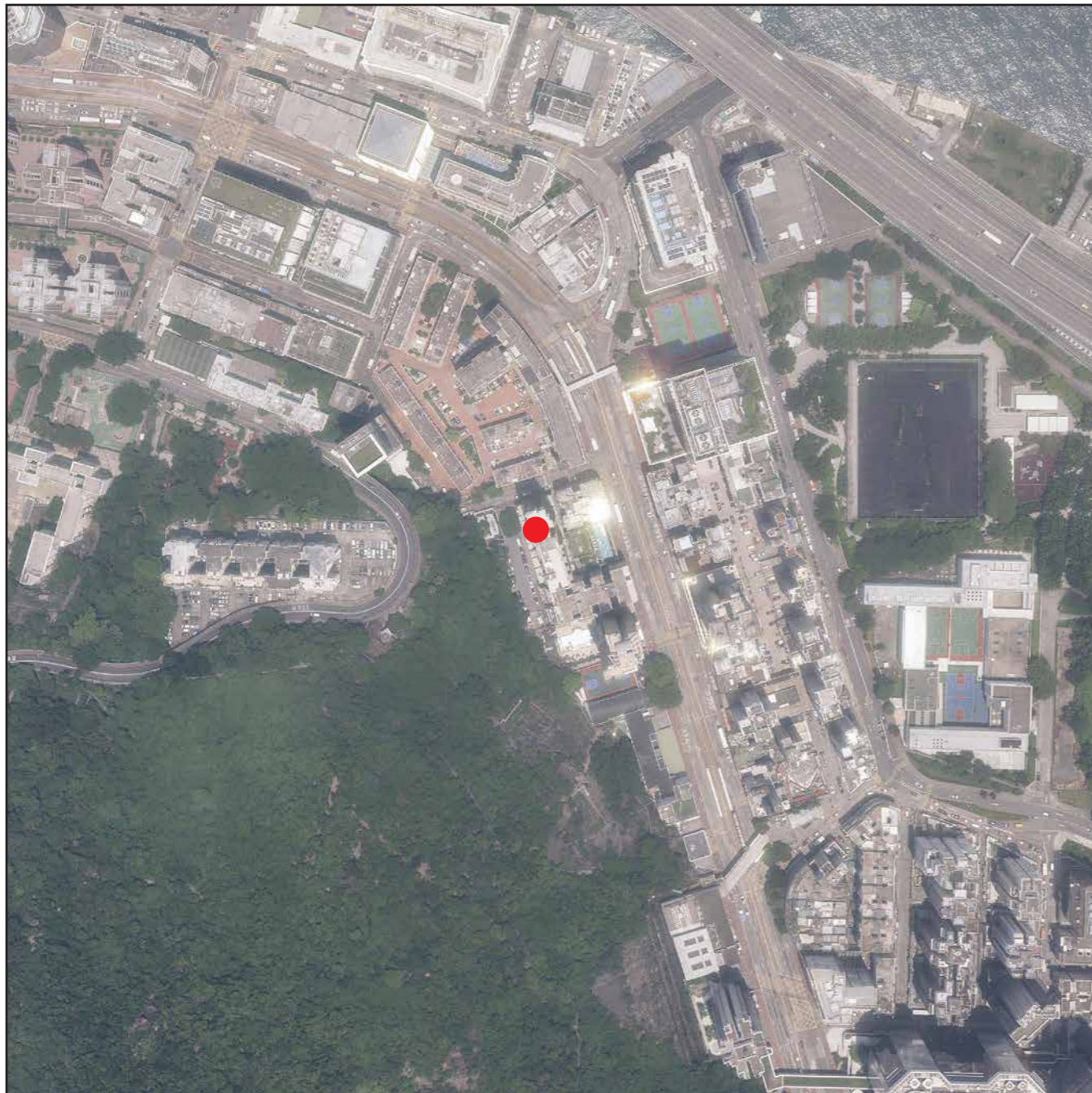


## 7. 發展項目的鳥瞰照片 AERIAL PHOTOGRAPH OF THE DEVELOPMENT



摘錄自地政總署測繪處於2024年8月7日在鰂魚涌6,000呎飛行高度拍攝之鳥瞰照片，編號為E224966C。  
Adopted from part of the aerial photograph taken by the Survey and Mapping Office of Lands Department at a flying height of 6,000 feet in Quarry Bay. Photo No. E224966C dated 7th August 2024.

● 發展項目的位置  
Location of the Development

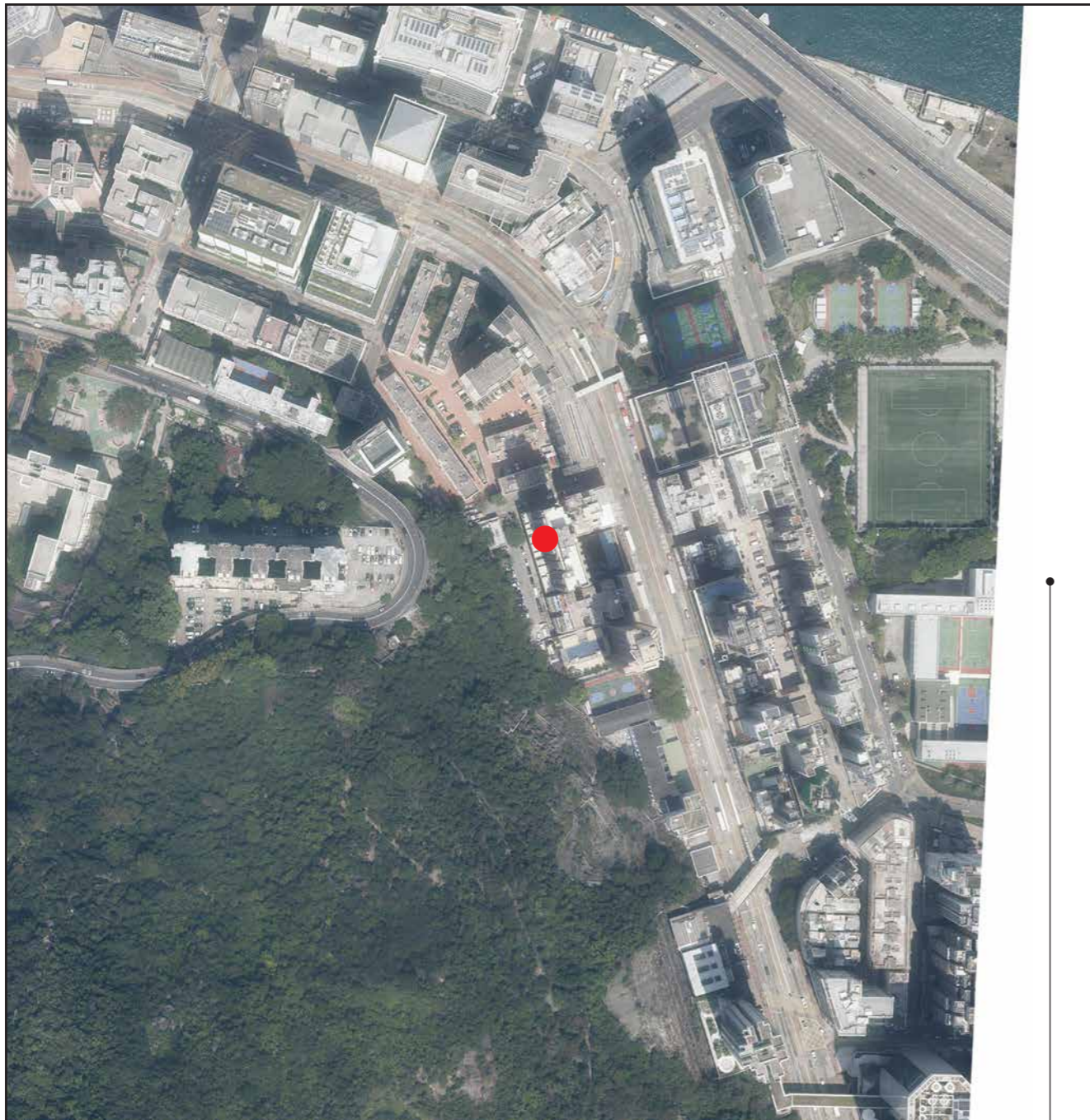
備註：因技術性問題，此鳥瞰照片所顯示的範圍超過《一手住宅物業銷售條例》的規定。

Note: Due to technical reasons, this aerial photograph has shown more than the area required under the Residential Properties (First-hand Sales) Ordinance.

香港特別行政區政府地政總署測繪處 © 版權所有，未經許可，不得複製。

Survey and Mapping Office, Lands Department, The Government of HKSAR © Copyright reserved  
— reproduction by permission only.

## 7. 發展項目的鳥瞰照片 AERIAL PHOTOGRAPH OF THE DEVELOPMENT



摘錄自地政總署測繪處於2025年3月22日在鰂魚涌6,900呎飛行高度拍攝之鳥瞰照片，編號為E255125C。  
Adopted from part of the aerial photograph taken by the Survey and Mapping Office of Lands Department at a flying height of 6,900 feet in Quarry Bay. Photo No. E255125C dated 22nd March 2025.

● 發展項目的位置  
Location of the Development

備註：因技術性問題，此鳥瞰照片所顯示的範圍超過《一手住宅物業銷售條例》的規定。

Note: Due to technical reasons, this aerial photograph has shown more than the area required under the Residential Properties (First-hand Sales) Ordinance.

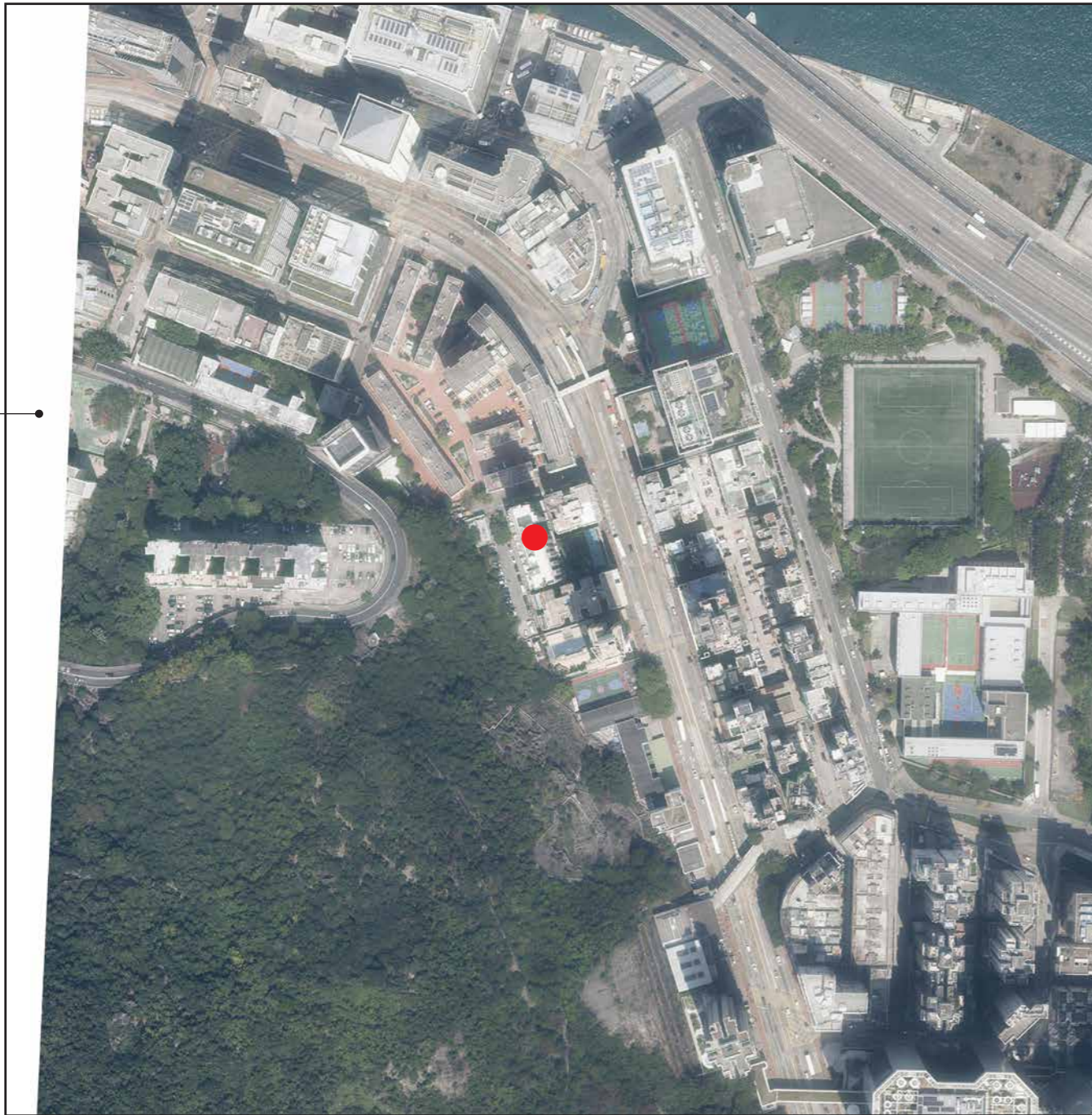
香港特別行政區政府地政總署測繪處 © 版權所有，未經許可，不得複製。

Survey and Mapping Office, Lands Department, The Government of HKSAR © Copyright reserved  
— reproduction by permission only.

鳥瞰照片並不覆蓋該等空白範圍

These blank areas fall outside the coverage of the Aerial Photograph

## 7. 發展項目的鳥瞰照片 AERIAL PHOTOGRAPH OF THE DEVELOPMENT



摘錄自地政總署測繪處於2025年3月22日在鰂魚涌6,900呎飛行高度拍攝之鳥瞰照片，編號為E255124C。  
Adopted from part of the aerial photograph taken by the Survey and Mapping Office of Lands Department at a flying height of 6,900 feet in Quarry Bay. Photo No. E255124C dated 22nd March 2025.

● 發展項目的位置  
Location of the Development

備註：因技術性問題，此鳥瞰照片所顯示的範圍超過《一手住宅物業銷售條例》的規定。

Note: Due to technical reasons, this aerial photograph has shown more than the area required under the Residential Properties (First-hand Sales) Ordinance.

香港特別行政區政府地政總署測繪處 © 版權所有，未經許可，不得複製。

Survey and Mapping Office, Lands Department, The Government of HKSAR © Copyright reserved  
— reproduction by permission only.

鳥瞰照片並不覆蓋本空白範圍

This blank area falls outside the coverage of the Aerial Photograph

## 7. 發展項目的鳥瞰照片 AERIAL PHOTOGRAPH OF THE DEVELOPMENT



鳥瞰照片並不覆蓋本空白範圍

This blank area falls outside the coverage of the Aerial Photograph

摘錄自地政總署測繪處於2025年9月12日在鰂魚涌6,900呎飛行高度拍攝之鳥瞰照片，編號為E259775C。  
Adopted from part of the aerial photograph taken by the Survey and Mapping Office of Lands Department at a flying height of 6,900 feet in Quarry Bay. Photo No. E259775C dated 12th September 2025.

● 發展項目的位置  
Location of the Development

備註：因技術性問題，此鳥瞰照片所顯示的範圍超過《一手住宅物業銷售條例》的規定。

Note: Due to technical reasons, this aerial photograph has shown more than the area required under the Residential Properties (First-hand Sales) Ordinance.

香港特別行政區政府地政總署測繪處 © 版權所有，未經許可，不得複製。

Survey and Mapping Office, Lands Department, The Government of HKSAR © Copyright reserved  
— reproduction by permission only.

## 7. 發展項目的鳥瞰照片 AERIAL PHOTOGRAPH OF THE DEVELOPMENT



鳥瞰照片並不覆蓋本空白範圍

This blank area falls outside the coverage of the Aerial Photograph

摘錄自地政總署測繪處於2025年9月12日在鰂魚涌6,900呎飛行高度拍攝之鳥瞰照片，編號為E259776C。  
Adopted from part of the aerial photograph taken by the Survey and Mapping Office of Lands Department at a flying height of 6,900 feet in Quarry Bay. Photo No. E259776C dated 12th September 2025.

● 發展項目的位置  
Location of the Development

備註：因技術性問題，此鳥瞰照片所顯示的範圍超過《一手住宅物業銷售條例》的規定。

Note: Due to technical reasons, this aerial photograph has shown more than the area required under the Residential Properties(First-hand Sales) Ordinance.

香港特別行政區政府地政總署測繪處 © 版權所有，未經許可，不得複製。

Survey and Mapping Office, Lands Department, The Government of HKSAR © Copyright reserved  
— reproduction by permission only.