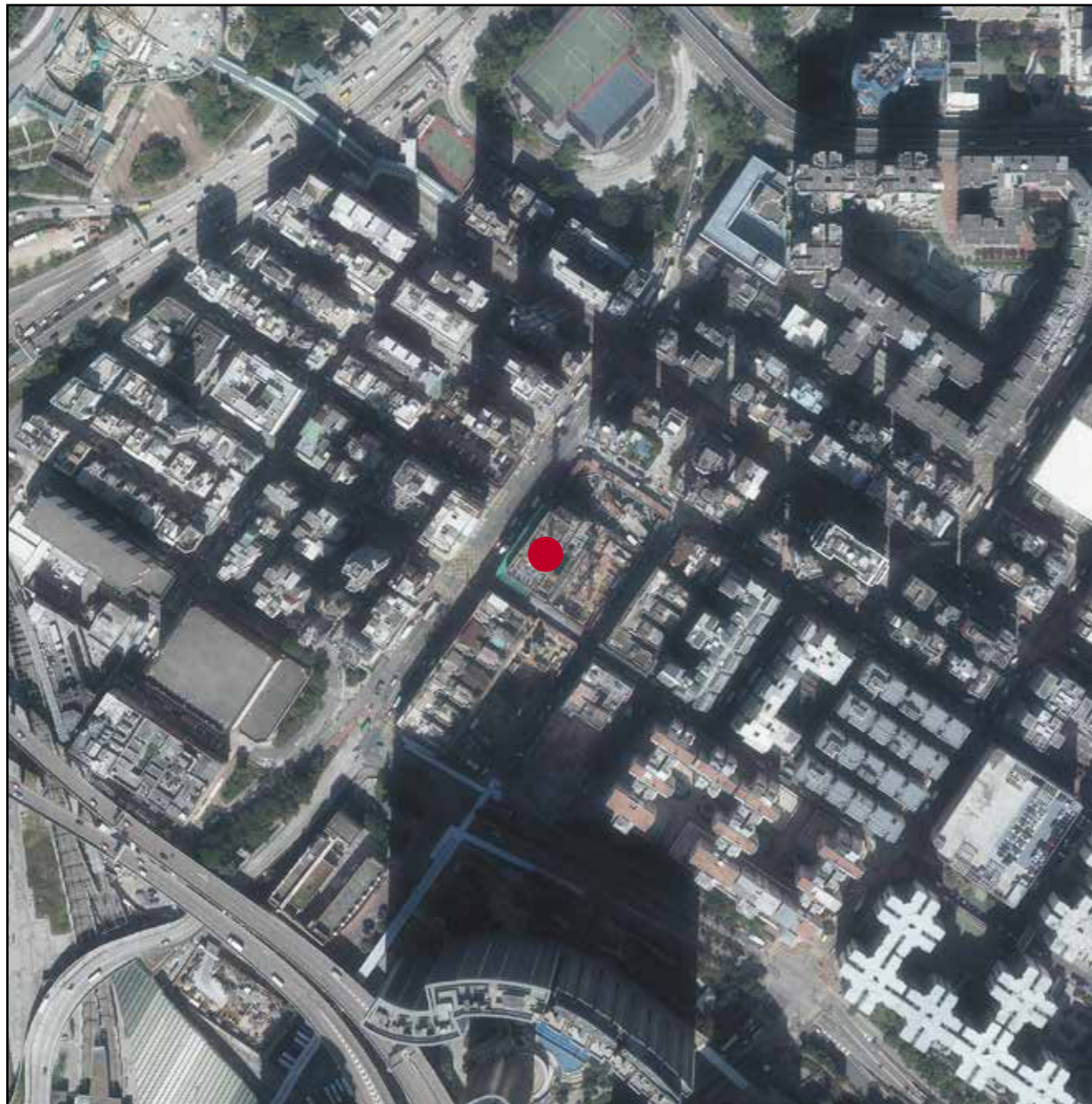


# 7 期數的鳥瞰照片 AERIAL PHOTOGRAPH OF THE PHASE



摘錄自地政總署測繪處於2021年12月3日在紅磡6,900呎飛行高度拍攝之鳥瞰照片，編號為E143167C。

Adopted from part of the aerial photograph taken by the Survey and Mapping Office of Lands Department at a flying height of 6,900 feet in Hung Hom. Photo No. E143167C, dated 3rd December 2021.

備註：因技術性問題，此鳥瞰照片所顯示的範圍超過《一手住宅物業銷售條例》的規定。

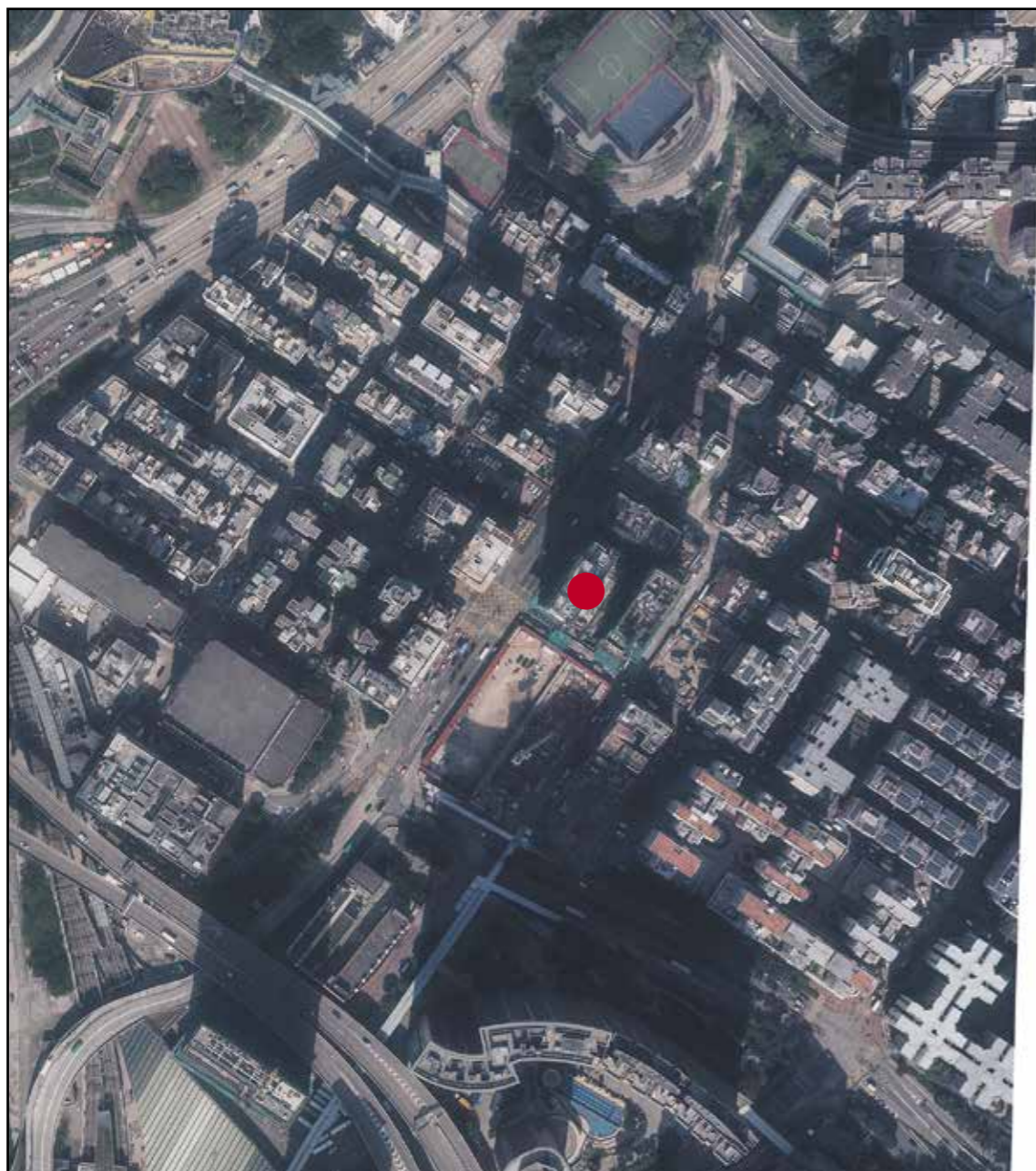
Note: Due to technical reasons, this aerial photograph has shown more than the area required under the Residential Properties (First-hand Sales) Ordinance.



期數的位置  
Location of the Phase

香港特別行政區政府地政總署測繪處 © 版權所有，未經許可，不得複製。  
Survey and Mapping Office, Lands Department, The Government of HKSAR © Copyright reserved – reproduction by permission only.

# 7 期數的鳥瞰照片 AERIAL PHOTOGRAPH OF THE PHASE



摘錄自地政總署測繪處於2022年12月8日在紅磡6,900呎飛行高度拍攝之鳥瞰照片，編號為E166824C。

Adopted from part of the aerial photograph taken by the Survey and Mapping Office of Lands Department at a flying height of 6,900 feet in Hung Hom. Photo No. E166824C, dated 8th December 2022.

備註：因技術性問題，此鳥瞰照片所顯示的範圍超過《一手住宅物業銷售條例》的規定。

Note: Due to technical reasons, this aerial photograph has shown more than the area required under the Residential Properties (First-hand Sales) Ordinance.



期數的位置  
Location of the Phase

鳥瞰照片並不覆蓋本空白範圍

This blank area falls outside the coverage of the aerial photograph

香港特別行政區政府地政總署測繪處 © 版權所有，未經許可，不得複製。  
Survey and Mapping Office, Lands Department, The Government of HKSAR © Copyright reserved –  
reproduction by permission only.

# 7 期數的鳥瞰照片 AERIAL PHOTOGRAPH OF THE PHASE



摘錄自地政總署測繪處於2022年12月8日在紅磡6,900呎飛行高度拍攝之鳥瞰照片，編號為E166826C。

Adopted from part of the aerial photograph taken by the Survey and Mapping Office of Lands Department at a flying height of 6,900 feet in Hung Hom. Photo No. E166826C, dated 8th December 2022.

備註：因技術性問題，此鳥瞰照片所顯示的範圍超過《一手住宅物業銷售條例》的規定。

Note: Due to technical reasons, this aerial photograph has shown more than the area required under the Residential Properties (First-hand Sales) Ordinance.



期數的位置

Location of the Phase

香港特別行政區政府地政總署測繪處 © 版權所有，未經許可，不得複製。

Survey and Mapping Office, Lands Department, The Government of HKSAR © Copyright reserved – reproduction by permission only.