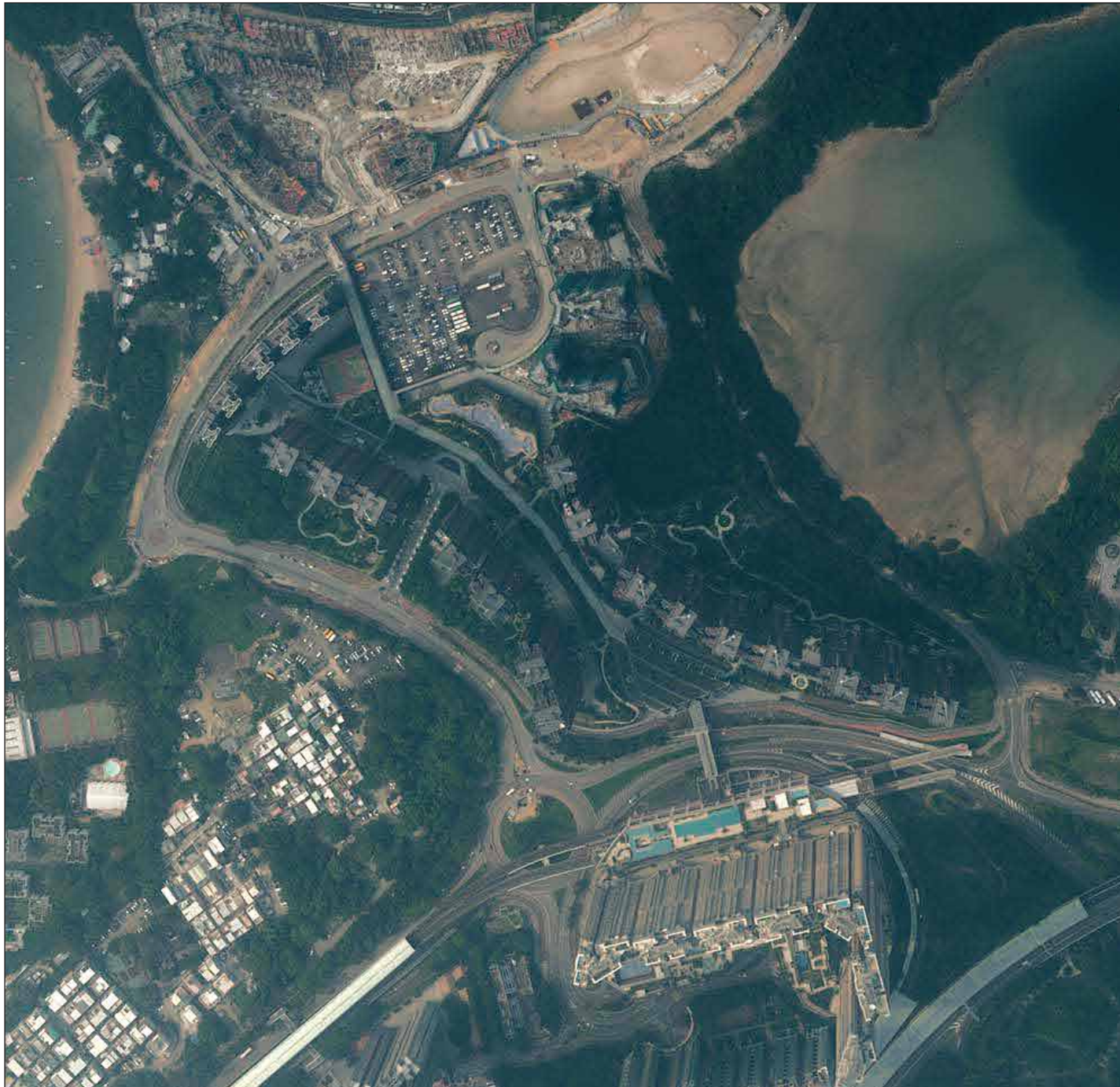


7. 期數的鳥瞰照片 AERIAL PHOTOGRAPH OF THE PHASE

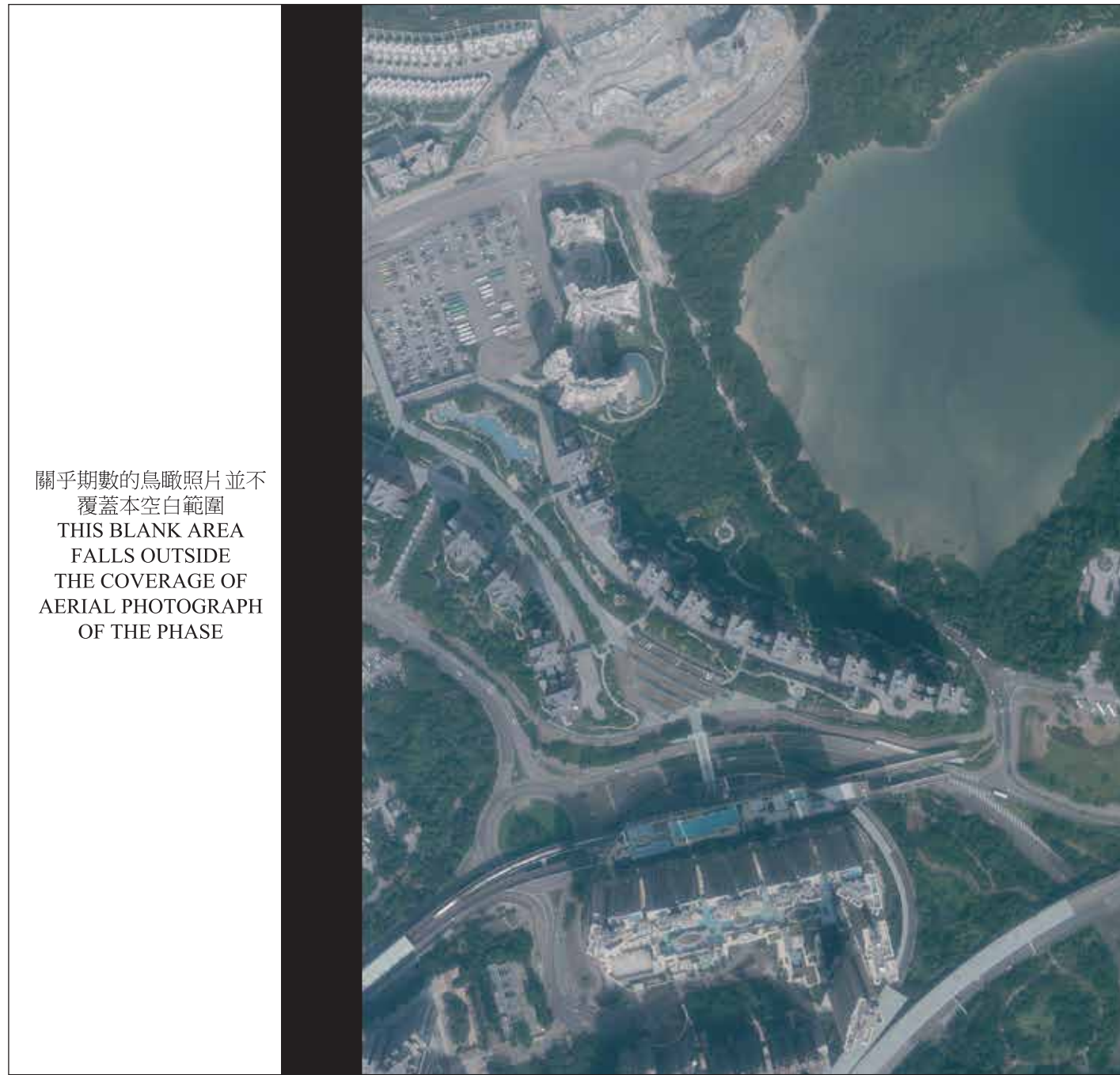


香港特別行政區政府地政總署測繪處，版權所有，未經許可，不得複製。
Survey and Mapping Office, Lands Department, The Government of HKSAR © Copyright reserved - reproduction by permission only.

摘錄自地政總署測繪處於2017年4月29日在烏溪沙6,900呎飛行高度拍攝之鳥瞰照片，編號為E023497C。
Adopted from part of the aerial photograph taken by the Survey and Mapping Office of Lands Department at a flying height 6,900 feet in Wu Kai Sha. Photo No. E023497C, dated 29th April 2017.

備註：因技術性問題，此鳥瞰照片所顯示的範圍超過《一手住宅物業銷售條例》的規定。
Note: Due to technical reasons, this aerial photograph has shown the area more than that required under the Residential Properties (First-hand Sales) Ordinance.

7. 期數的鳥瞰照片
AERIAL PHOTOGRAPH OF THE PHASE

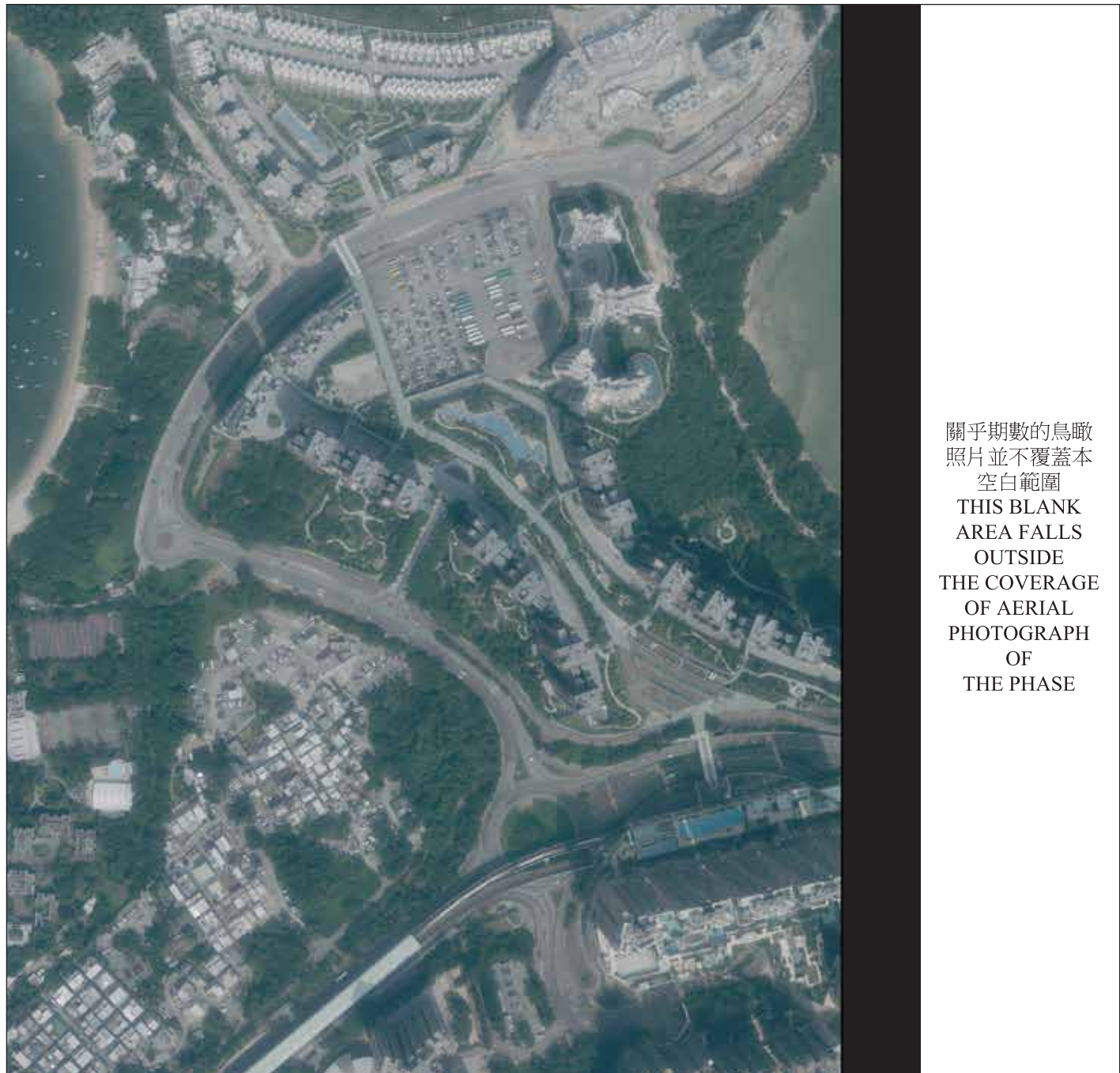


關乎期數的鳥瞰照片並不
覆蓋本空白範圍
THIS BLANK AREA
FALLS OUTSIDE
THE COVERAGE OF
AERIAL PHOTOGRAPH
OF THE PHASE

摘錄自地政總署測繪處於2019年9月29日在烏溪沙6,900呎飛行高度拍攝之鳥瞰照片，編號為E067201C。
Adopted from part of the aerial photograph taken by the Survey and Mapping Office of Lands Department at a flying height 6,900 feet in Wu Kai Sha. Photo No. E067201C, dated 29th September 2019.

備註：因技術性問題，此鳥瞰照片所顯示的範圍超過《一手住宅物業銷售條例》的規定。
Note: Due to technical reasons, this aerial photograph has shown the area more than that required under the Residential Properties (First-hand Sales) Ordinance.

香港特別行政區政府地政總署測繪處，版權所有，未經許可，不得複製。
Survey and Mapping Office, Lands Department, The Government of HKSAR © Copyright reserved - reproduction by permission only.



關乎期數的鳥瞰
照片並不覆蓋本
空白範圍
THIS BLANK
AREA FALLS
OUTSIDE
THE COVERAGE
OF AERIAL
PHOTOGRAPH
OF
THE PHASE

摘錄自地政總署測繪處於2019年9月29日在烏溪沙6,900呎飛行高度拍攝之鳥瞰照片，編號為E067203C。
Adopted from part of the aerial photograph taken by the Survey and Mapping Office of Lands Department at a flying height 6,900 feet in Wu Kai Sha. Photo No. E067203C, dated 29th September 2019.

備註：因技術性問題，此鳥瞰照片所顯示的範圍超過《一手住宅物業銷售條例》的規定。
Note: Due to technical reasons, this aerial photograph has shown the area more than that required under the Residential Properties (First-hand Sales) Ordinance.

香港特別行政區政府地政總署測繪處，版權所有，未經許可，不得複製。
Survey and Mapping Office, Lands Department, The Government of HKSAR © Copyright reserved - reproduction by permission only.