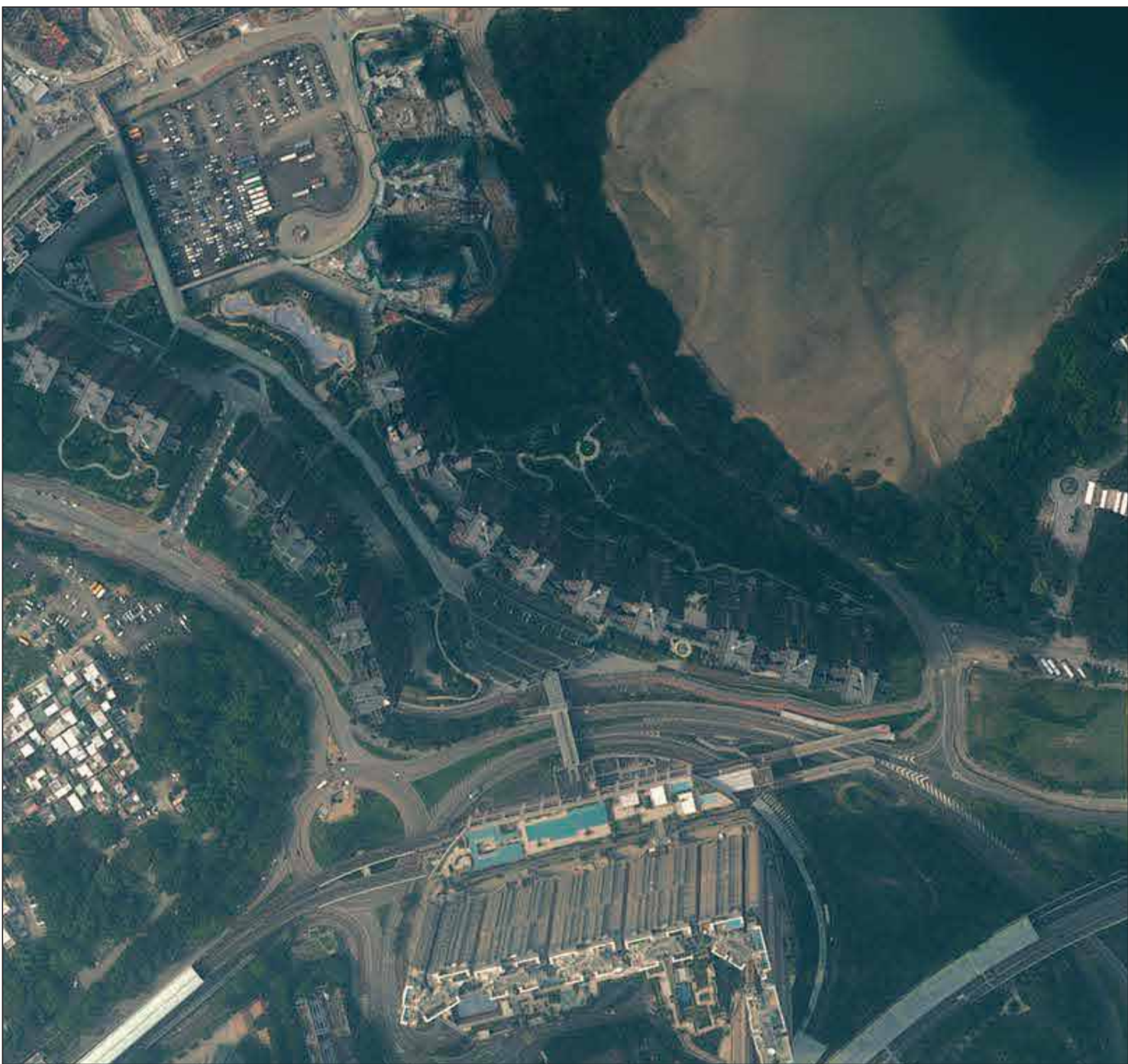


7. 期數的鳥瞰照片
AERIAL PHOTOGRAPH OF THE PHASE



香港特別行政區政府地政總署測繪處，版權所有，未經許可，不得複製。
Survey and Mapping Office, Lands Department, The Government of HKSAR © Copyright reserved - reproduction by permission only.

摘錄自地政總署測繪處於2017年4月29日在烏溪沙6,900呎飛行高度拍攝之鳥瞰照片，編號為E023497C。
Adopted from part of the aerial photograph taken by the Survey and Mapping Office of Lands Department at a flying height 6,900 feet in Wu Kai Sha. Photo No. E023497C, dated 29th April 2017.

備註：因技術性問題，此鳥瞰照片所顯示的範圍超過《一手住宅物業銷售條例》的規定。
Note : Due to technical reasons, this aerial photograph has shown the area more than that required under the Residential Properties (First-hand Sales) Ordinance.



香港特別行政區政府地政總署測繪處，版權所有，未經許可，不得複製。
Survey and Mapping Office, Lands Department, The Government of HKSAR © Copyright reserved - reproduction by permission only.

摘錄自地政總署測繪處於2020年1月14日在烏溪沙6,900呎飛行高度拍攝之鳥瞰照片，編號為E087468C。
Adopted from part of the aerial photograph taken by the Survey and Mapping Office of Lands Department at a flying height 6,900 feet in Wu Kai Sha. Photo No. E087468C, dated 14th January 2020.

備註：因技術性問題，此鳥瞰照片所顯示的範圍超過《一手住宅物業銷售條例》的規定。
Note : Due to technical reasons, this aerial photograph has shown the area more than that required under the Residential Properties (First-hand Sales) Ordinance.



香港特別行政區政府地政總署測繪處，版權所有，未經許可，不得複製。
Survey and Mapping Office, Lands Department, The Government of HKSAR © Copyright reserved - reproduction by permission only.

摘錄自地政總署測繪處於2020年1月14日在烏溪沙6,900呎飛行高度拍攝之鳥瞰照片，編號為E087281C。
Adopted from part of the aerial photograph taken by the Survey and Mapping Office of Lands Department at a flying height 6,900 feet in Wu Kai Sha. Photo No. E087281C, dated 14th January 2020.

備註：因技術性問題，此鳥瞰照片所顯示的範圍超過《一手住宅物業銷售條例》的規定。
Note : Due to technical reasons, this aerial photograph has shown the area more than that required under the Residential Properties (First-hand Sales) Ordinance.



香港特別行政區政府地政總署測繪處，版權所有，未經許可，不得複製。
Survey and Mapping Office, Lands Department, The Government of HKSAR © Copyright reserved - reproduction by permission only.

摘錄自地政總署測繪處於2020年2月19日在烏溪沙6,900呎飛行高度拍攝之鳥瞰照片，編號為E090435C。
Adopted from part of the aerial photograph taken by the Survey and Mapping Office of Lands Department at a flying height 6,900 feet in Wu Kai Sha. Photo No. E090435C, dated 19th February 2020.

備註：因技術性問題，此鳥瞰照片所顯示的範圍超過《一手住宅物業銷售條例》的規定。
Note : Due to technical reasons, this aerial photograph has shown the area more than that required under the Residential Properties (First-hand Sales) Ordinance.



香港特別行政區政府地政總署測繪處，版權所有，未經許可，不得複製。
Survey and Mapping Office, Lands Department, The Government of HKSAR © Copyright reserved - reproduction by permission only.

摘錄自地政總署測繪處於2020年2月19日在十四鄉6,900呎飛行高度拍攝之鳥瞰照片，編號為E090433C。
Adopted from part of the aerial photograph taken by the Survey and Mapping Office of Lands Department at a flying height 6,900 feet in Shap Sze Heung. Photo No. E090433C, dated 19th February 2020.

備註：因技術性問題，此鳥瞰照片所顯示的範圍超過《一手住宅物業銷售條例》的規定。
Note : Due to technical reasons, this aerial photograph has shown the area more than that required under the Residential Properties (First-hand Sales) Ordinance.