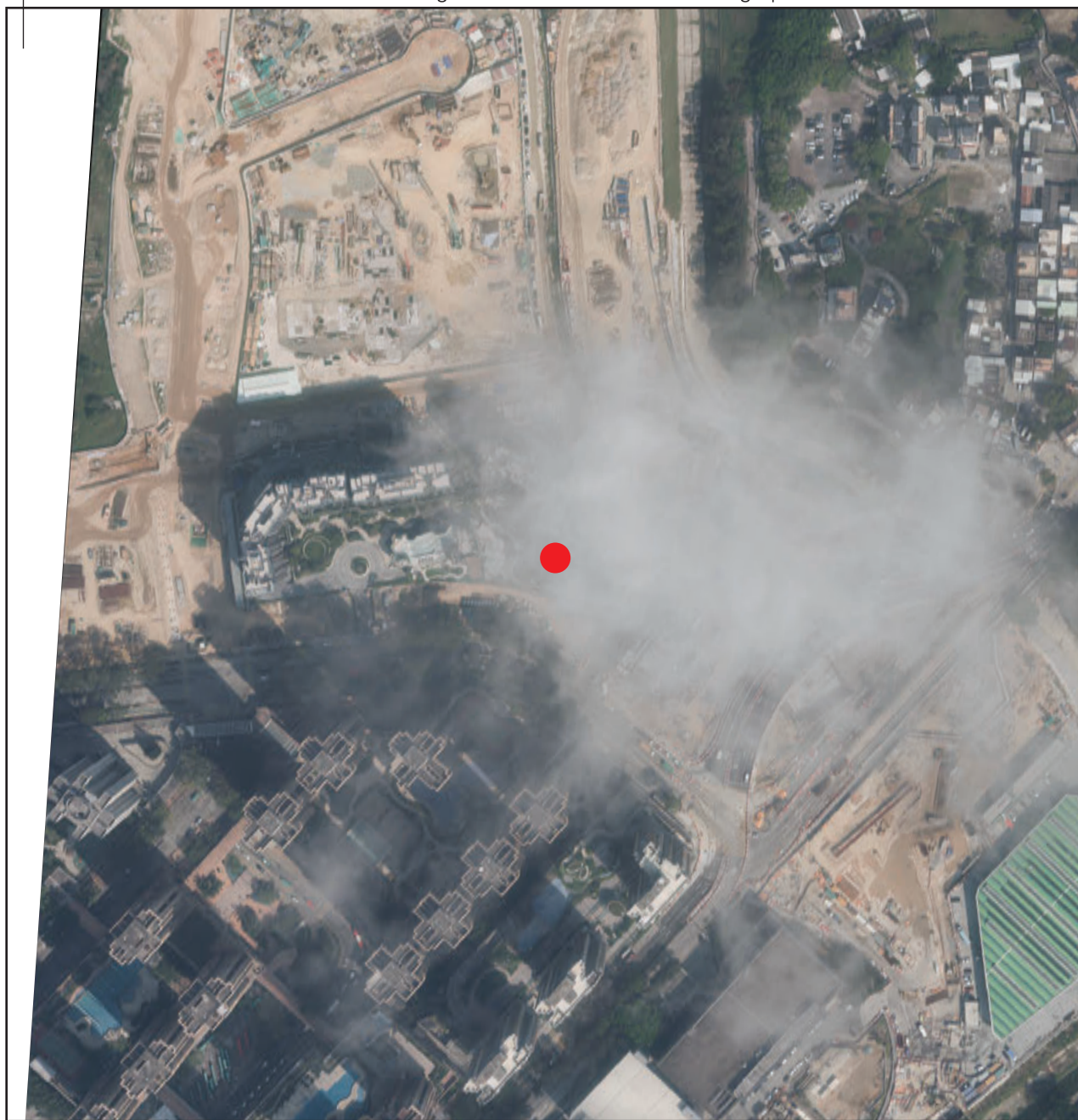


7 期數的鳥瞰照片 AERIAL PHOTOGRAPH OF THE PHASE

鳥瞰照片並不覆蓋本空白範圍

This blank area falls outside the coverage of the relevant Aerial Photograph



● 期數的位置
Location of the Phase

比例尺 SCALE
米 metres
0 50 100 150 200 250



摘錄自地政總署測繪處在6,900呎的飛行高度拍攝之鳥瞰照片，照片編號為E184937C，飛行日期：2023年2月23日。

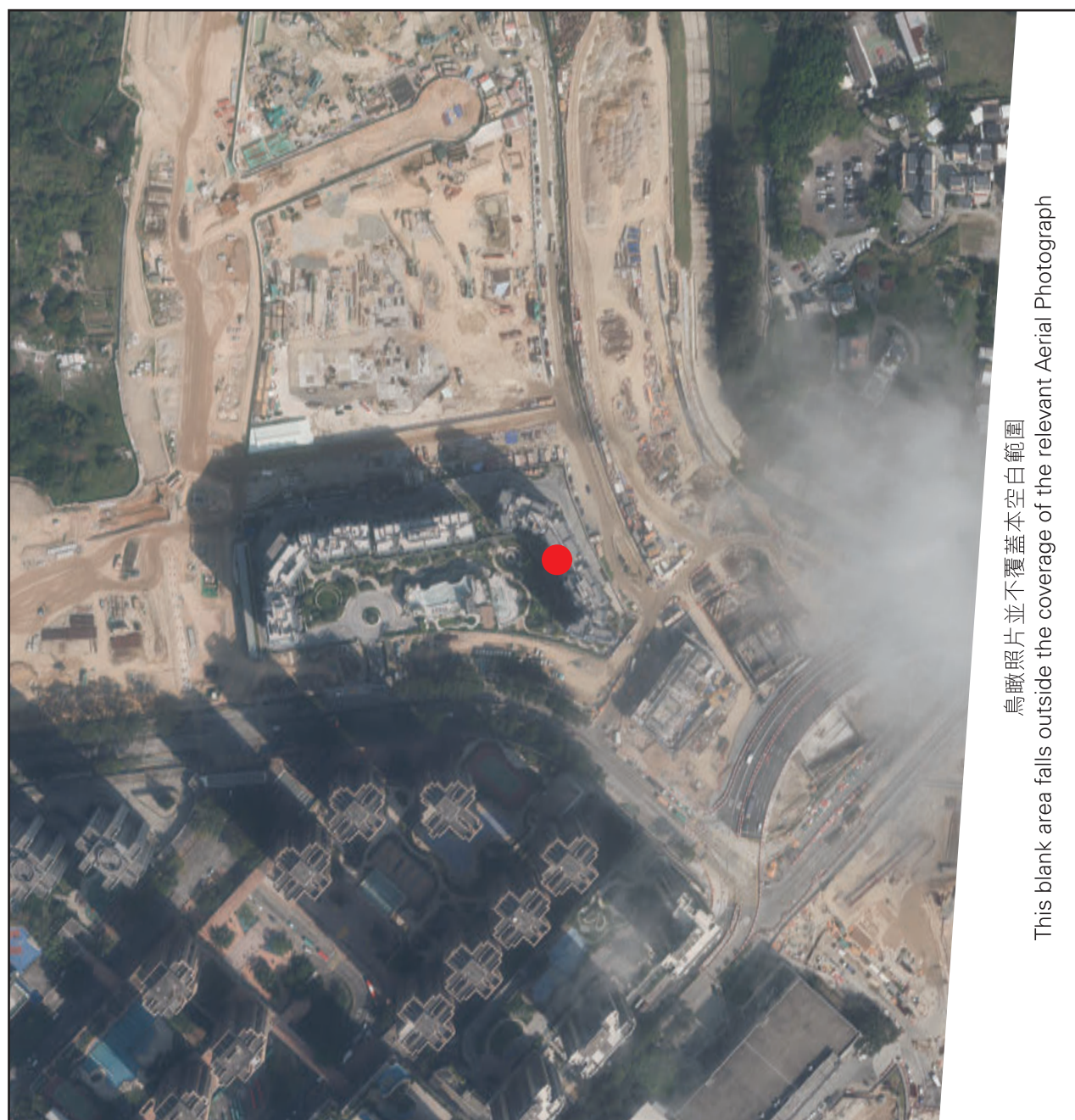
Adopted from part of the aerial photograph taken by the Survey and Mapping Office of the Lands Department at a flying height of 6,900 feet, Photo No. E184937C, dated of flight: 23rd February 2023.

香港特別行政區政府地政總署測繪處©版權所有，未經許可，不得複製。
Survey and Mapping Office, Lands Department, The Government of HKSAR © Copyright reserved – reproduction by permission only.

備註：1. 期數的鳥瞰照片之副本可於售樓處開放時間內免費查閱。
2. 由於期數的邊界不規則的技術原因，此照片所顯示的範圍可能超過《一手住宅物業銷售條例》的規定範圍。

Note：1. Copy of the aerial photograph of the Phase is available for free inspection at the sales office during opening hours.
2. The aerial photograph may show more than the area required under the Residential Properties (First-hand Sales) Ordinance due to techical reason that the boundary of the Phase is irregular.

7 期數的鳥瞰照片 AERIAL PHOTOGRAPH OF THE PHASE



● 期數的位置
Location of the Phase

米 metres 比例尺 SCALE
0 50 100 150 200 250



摘錄自地政總署測繪處在6,900呎的飛行高度拍攝之鳥瞰照片，照片編號為E184938C，飛行日期：2023年2月23日。

Adopted from part of the aerial photograph taken by the Survey and Mapping Office of the Lands Department at a flying height of 6,900 feet, Photo No. E184938C, dated of flight: 23rd February 2023.

香港特別行政區政府地政總署測繪處©版權所有，未經許可，不得複製。
Survey and Mapping Office, Lands Department, The Government of HKSAR © Copyright reserved – reproduction by permission only.

備註：1. 期數的鳥瞰照片之副本可於售樓處開放時間內免費查閱。
2. 由於期數的邊界不規則的技術原因，此照片所顯示的範圍可能超過《一手住宅物業銷售條例》的規定範圍。

Note: 1. Copy of the aerial photograph of the Phase is available for free inspection at the sales office during opening hours.
2. The aerial photograph may show more than the area required under the Residential Properties (First-hand Sales) Ordinance due to technical reason that the boundary of the Phase is irregular.

7 期數的鳥瞰照片 AERIAL PHOTOGRAPH OF THE PHASE



● 期數的位置
Location of the Phase

米 metres 比例尺 SCALE
0 50 100 150 200 250



摘錄自地政總署測繪處在2,000呎的飛行高度拍攝之鳥瞰照片，照片編號為E214764C，飛行日期：2023年12月28日。

Adopted from part of the aerial photograph taken by the Survey and Mapping Office of the Lands Department at a flying height of 2,000 feet, Photo No. E214764C, dated of flight: 28th December 2023.

香港特別行政區政府地政總署測繪處©版權所有，未經許可，不得複製。
Survey and Mapping Office, Lands Department, The Government of HKSAR © Copyright reserved – reproduction by permission only.

備註：1. 期數的鳥瞰照片之副本可於售樓處開放時間內免費查閱。
2. 由於期數的邊界不規則的技術原因，此照片所顯示的範圍可能超過《一手住宅物業銷售條例》的規定範圍。

Note：1. Copy of the aerial photograph of the Phase is available for free inspection at the sales office during opening hours.
2. The aerial photograph may show more than the area required under the Residential Properties (First-hand Sales) Ordinance due to techical reason that the boundary of the Phase is irregular.

7 期數的鳥瞰照片 AERIAL PHOTOGRAPH OF THE PHASE



● 期數的位置
Location of the Phase

米 metres 比例尺 SCALE
0 50 100 150 200 250



摘錄自地政總署測繪處在2,000呎的飛行高度拍攝之鳥瞰照片，照片編號為E214762C，飛行日期：2023年12月28日。

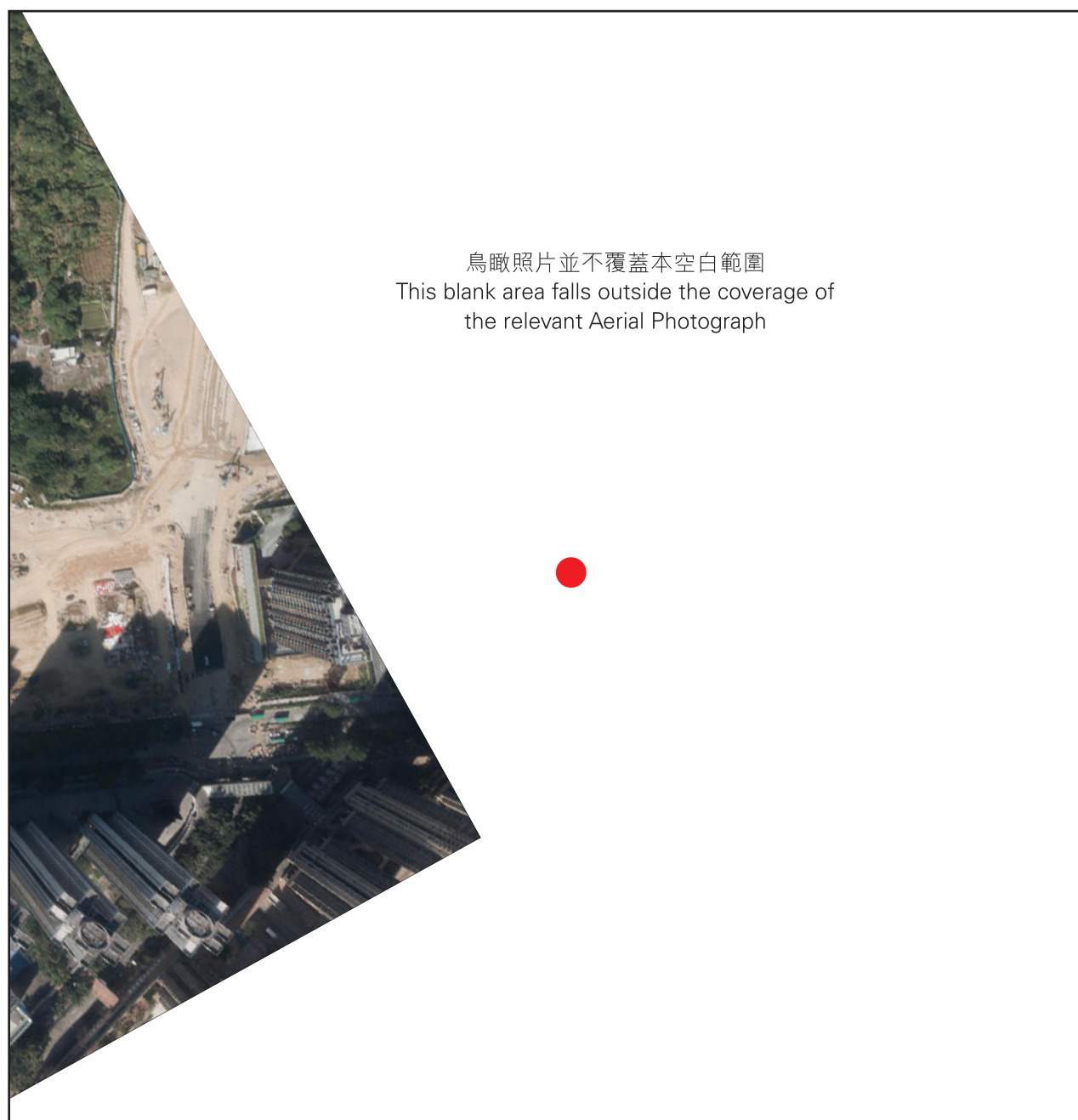
Adopted from part of the aerial photograph taken by the Survey and Mapping Office of the Lands Department at a flying height of 2,000 feet, Photo No. E214762C, dated of flight: 28th December 2023.

香港特別行政區政府地政總署測繪處©版權所有，未經許可，不得複製。
Survey and Mapping Office, Lands Department, The Government of HKSAR © Copyright reserved – reproduction by permission only.

備註：1. 期數的鳥瞰照片之副本可於售樓處開放時間內免費查閱。
2. 由於期數的邊界不規則的技術原因，此照片所顯示的範圍可能超過《一手住宅物業銷售條例》的規定範圍。

Note：1. Copy of the aerial photograph of the Phase is available for free inspection at the sales office during opening hours.
2. The aerial photograph may show more than the area required under the Residential Properties (First-hand Sales) Ordinance due to techical reason that the boundary of the Phase is irregular.

7 期數的鳥瞰照片 AERIAL PHOTOGRAPH OF THE PHASE



● 期數的位置
Location of the Phase

米 metres 比例尺 SCALE
0 50 100 150 200 250



摘錄自地政總署測繪處在2,000呎的飛行高度拍攝之鳥瞰照片，照片編號為E214766C，飛行日期：2023年12月28日。

Adopted from part of the aerial photograph taken by the Survey and Mapping Office of the Lands Department at a flying height of 2,000 feet, Photo No. E214766C, dated of flight: 28th December 2023.

香港特別行政區政府地政總署測繪處©版權所有，未經許可，不得複製。

Survey and Mapping Office, Lands Department, The Government of HKSAR © Copyright reserved – reproduction by permission only.

備註：1. 期數的鳥瞰照片之副本可於售樓處開放時間內免費查閱。
2. 由於期數的邊界不規則的技術原因，此照片所顯示的範圍可能超過《一手住宅物業銷售條例》的規定範圍。

Note：1. Copy of the aerial photograph of the Phase is available for free inspection at the sales office during opening hours.
2. The aerial photograph may show more than the area required under the Residential Properties (First-hand Sales) Ordinance due to techical reason that the boundary of the Phase is irregular.



7 期數的鳥瞰照片 AERIAL PHOTOGRAPH OF THE PHASE

此版乃特意留白

This page is deliberately left blank