

10 期數的住宅物業的樓面平面圖

FLOOR PLANS OF RESIDENTIAL PROPERTIES IN THE PHASE

在本頁上之備註和圖例適用於全部的「期數的住宅物業的樓面平面圖」的頁數。

The notes and legends on this page apply to all pages of "Floor plans of residential properties in the Phase".

備註：

1. 部分住宅物業的露台、工作平台、空調機平台、平台、天台或外牆上/附近或設有外露之公用喉管，或外牆裝飾皮內藏之公用喉管。
2. 部分住宅物業內之部分天花或有跌級樓板，用以安裝上層之機電設備或配合上層之結構、建築設計及/或裝修設計上的需要。
3. 部分住宅物業內或設有假陣或假天花用以安裝空調喉管及/或其他機電設備。
4. 部分住宅單位的空調機之室外機放置於指定的空調機平台或平台。該等空調機之室外機可能發出熱力及/或聲音。
5. 各住宅物業的樓面平面圖內所展示之裝置及設備的圖標如洗面盆、座廁、淋浴間、洗滌盆、櫃(如有)等乃根據最新經批准的建築圖則擬備，其形狀、尺寸、比例或與實際提供的裝置及設備存在差異，僅供示意及參考之用。

Notes:

1. Common pipes exposed or enclosed in cladding may be located at / adjacent to the balcony, utility platform, air conditioning platform, flat roof, roof or external wall of some residential properties.
2. There may be sunken slabs at some parts of the ceiling inside some residential properties for the installation of mechanical and electrical services of the floor above or due to the structural, architectural and/or decoration design requirements of the floor above.
3. There may be ceiling bulkheads or false ceiling inside some residential properties for the installation of air-conditioning conduits and/or other mechanical and electrical services.
4. The outdoor unit of air-conditioners for some residential properties are placed on the designated air-conditioning platforms or flat roof. Such outdoor unit of air-conditioners may create heat and / or noise.
5. Those icons of fittings and appliances shown on the floor plans of residential properties like wash basins, water closets, shower cubicles, sink units, cabinets (if any) etc. are prepared in accordance with the latest approved building plans. Their shapes, dimensions, scales may be differed from the fittings and appliances actually provided and they are for indication and reference only.

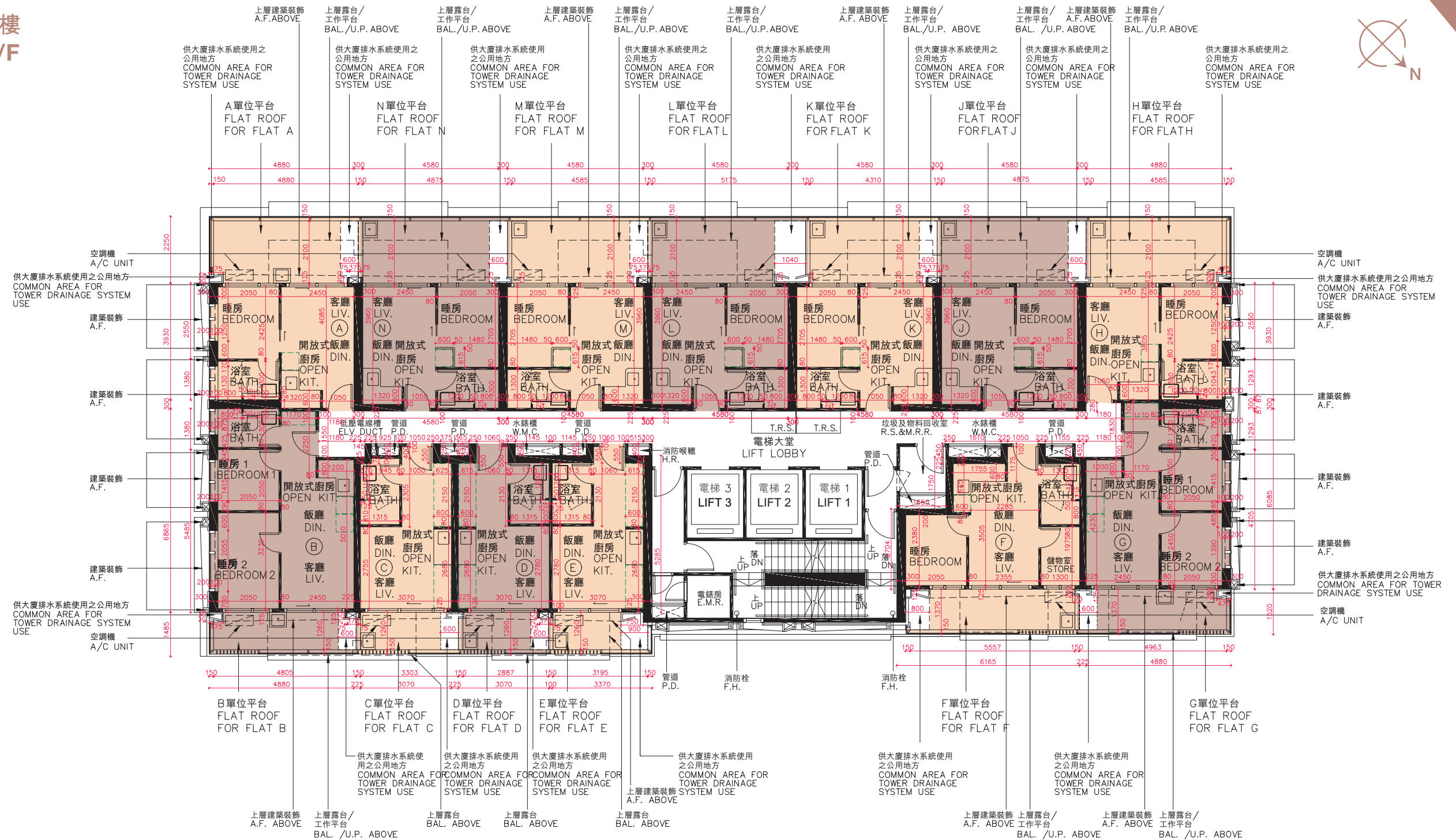
樓面平面圖之圖例

Legends of Floor Plans

A/C PLATFORM	= 空調機平台 Air Conditioning Platform
A/C UNIT	= 空調機 Air Conditioning Unit
A.F.	= 建築裝飾 Architectural Feature
A.F. ABOVE	= 上層建築裝飾 Architectural Feature Above
BAL.	= 露台 Balcony
BAL. ABOVE	= 上層露台 Balcony Above
BAL./U.P	= 露台/工作平台 Balcony/Utility Platform
BAL./U.P. ABOVE	= 上層露台/工作平台 Balcony/Utility Platform Above
BATH.	= 浴室 Bathroom
COVER OF BAL. BELOW	= 下層露台頂蓋 Cover of Balcony Below
COVER OF BAL./U.P. BELOW	= 下層露台/工作平台頂蓋 Cover of Balcony/Utility Platform Below
DIN.	= 飯廳 Dining Room
DN	= 落 Down
ELV DUCT	= 低壓電線槽 Extra-low Voltage Duct
E.M.R.	= 電錶房 Electrical Meter Room
F.H.	= 消防栓 Fire Hydrant
H.R.	= 消防喉轆 Hose Reel
LIV.	= 客廳 Living Room
M. BATH.	= 主人浴室 Master Bathroom
M. BEDROOM	= 主人睡房 Master Bedroom
OPEN KIT.	= 開放式廚房 Open Kitchen
P.D.	= 管道 Pipe Duct
R.S.& M.R.R.	= 垃圾及物料回收室 Refuse Storage and Material Recovery Room
STORE	= 儲物室 Store Room
T.R.S.	= 臨時庇護處 Temporary Refuge Space
W.M.C.	= 水錶櫃 Water Meter Cabinet
	= 隨樓附送之嵌入式裝置 Built-in fittings provided in the flats

10 期數的住宅物業的樓面平面圖 FLOOR PLANS OF RESIDENTIAL PROPERTIES IN THE PHASE

5樓
5/F



備註：平面圖所列數字為以毫米標示之建築結構尺寸。
Note: The dimensions of floor plans are all structural dimensions in millimeter.

比例尺 Scale 0M(米) 5M(米)

10 期數的住宅物業的樓面平面圖

FLOOR PLANS OF RESIDENTIAL PROPERTIES IN THE PHASE

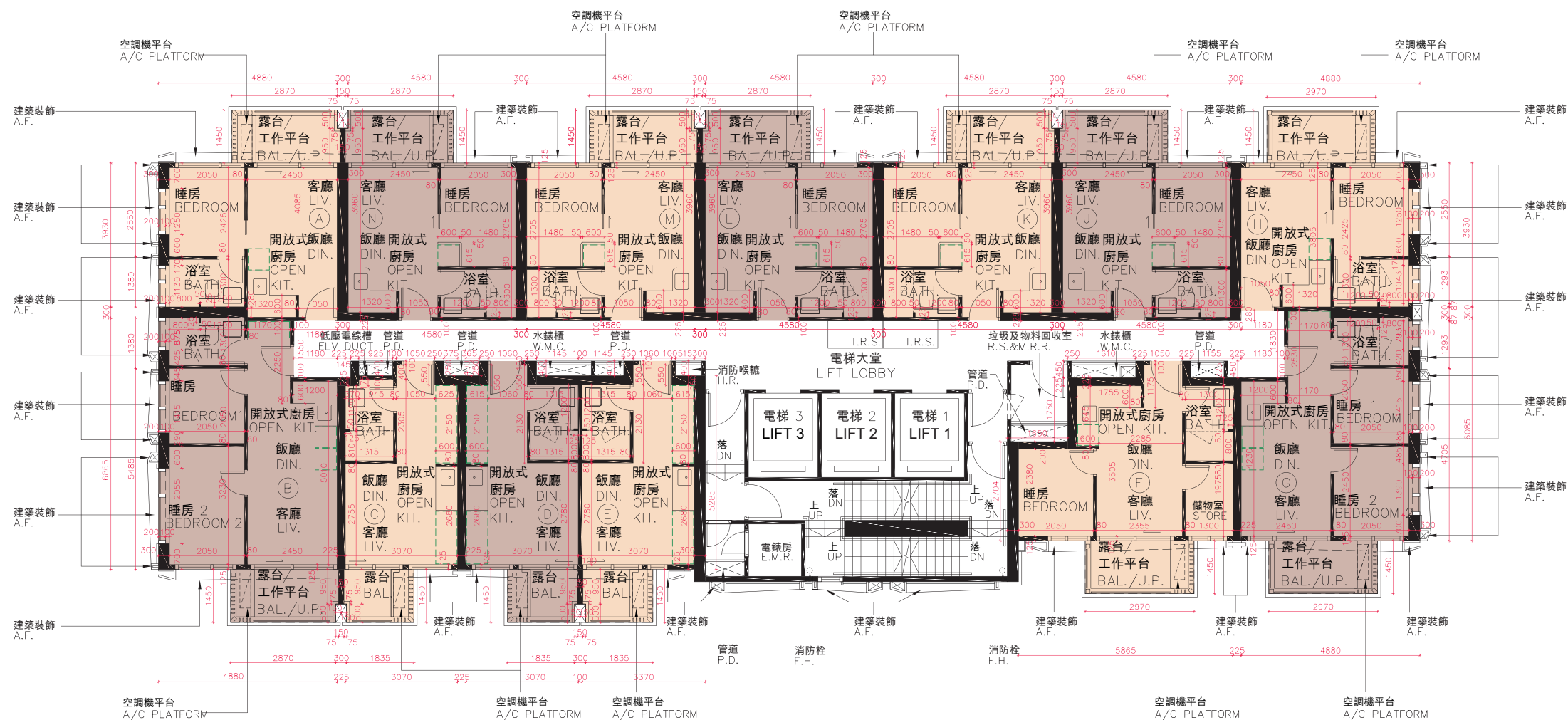
每個住宅物業 Each Residential Property	樓層 Floor	單位 Flat												
		A	B	C	D	E	F	G	H	J	K	L	M	N
樓板(不包括灰泥)的厚度(毫米) Thickness of Floor Slab (excluding plaster)(mm)	5樓 5/F	160	160	160	160	160	160	160	160	160	160	160	160	160
層與層之間的高度(毫米) Floor-to-Floor Height (mm)		2975, 3050, 3325	2975, 3050, 3325	2975, 3050, 3150, 3325	2975, 3050, 3150, 3325	2975, 3050, 3150, 3325	2975, 3050, 3150, 3325	2975, 3050, 3325	2975, 3050, 3325	2975, 3050, 3150, 3325	2975, 3050, 3150, 3325	2975, 3050, 3150, 3325	2975, 3050, 3150, 3325	2975, 3050, 3150, 3325

因住宅物業的較高樓層的結構牆的厚度遞減，較高樓層的內部面積，一般比較低樓層的內部面積稍大。
 The internal areas of residential properties on the upper floors will generally be slightly larger than those on the lower floors because of the reducing thickness of the structural walls on the upper floors.

請參閱本售樓說明書第23頁為期數的住宅物業的樓面平面圖而設之備註和圖例。
 Please refer to page 23 of this sales brochure for the notes and legends for the floor plans of residential properties in the Phase.

10 期數的住宅物業的樓面平面圖 FLOOR PLANS OF RESIDENTIAL PROPERTIES IN THE PHASE

6樓、8樓、9樓、11樓、12樓、16樓、17樓、19樓、20樓、22樓、23樓及26樓
6/F, 8/F, 9/F, 11/F, 12/F, 16/F, 17/F, 19/F, 20/F, 22/F, 23/F and 26/F



備註：平面圖所列數字為以毫米標示之建築結構尺寸。

Note: The dimensions of floor plans are all structural dimensions in millimeter.

比例尺 Scale 0M(米) 5M(米)

10 期數的住宅物業的樓面平面圖

FLOOR PLANS OF RESIDENTIAL PROPERTIES IN THE PHASE

每個住宅物業 Each Residential Property	樓層 Floor	單位 Flat												
		A	B	C	D	E	F	G	H	J	K	L	M	N
樓板(不包括灰泥)的厚度(毫米) Thickness of Floor Slab (excluding plaster)(mm)	6樓、8樓、9樓、 11樓、12樓、16樓、 17樓、19樓、20樓、 22樓、23樓及26樓	160	160	160	160	160	160	160	160	160	160	160	160	160
層與層之間的高度(毫米) Floor-to-Floor Height (mm)	6/F, 8/F, 9/F, 11/F, 12/F, 16/F, 17/F, 19/F, 20/F, 22/F, 23/F and 26/F	2975, 3050, 3325	2975, 3050, 3325	2975, 3050, 3150, 3325	2975, 3050, 3150, 3325	2975, 3050, 3150, 3325	2975, 3050, 3150, 3325	2975, 3050, 3325	2975, 3050, 3325	2975, 3050, 3150, 3325	2975, 3050, 3150, 3325	2975, 3050, 3150, 3325	2975, 3050, 3150, 3325	2975, 3050, 3150, 3325

因住宅物業的較高樓層的結構牆的厚度遞減，較高樓層的內部面積，一般比較低樓層的內部面積稍大。
 The internal areas of residential properties on the upper floors will generally be slightly larger than those on the lower floors because of the reducing thickness of the structural walls on the upper floors.

請參閱本售樓說明書第23頁為期數的住宅物業的樓面平面圖而設之備註和圖例。
 Please refer to page 23 of this sales brochure for the notes and legends for the floor plans of residential properties in the Phase.

10 期數的住宅物業的樓面平面圖 FLOOR PLANS OF RESIDENTIAL PROPERTIES IN THE PHASE

7樓、10樓、15樓、18樓、21樓及25樓
7/F, 10/F, 15/F, 18/F, 21/F and 25/F



備註：平面圖所列數字為以毫米標示之建築結構尺寸。
Note: The dimensions of floor plans are all structural dimensions in millimeter.

比例尺 Scale 0M(米) 5M(米)

10 期數的住宅物業的樓面平面圖

FLOOR PLANS OF RESIDENTIAL PROPERTIES IN THE PHASE

每個住宅物業 Each Residential Property	樓層 Floor	單位 Flat												
		A	B	C	D	E	F	G	H	J	K	L	M	N
樓板(不包括灰泥)的厚度(毫米) Thickness of Floor Slab (excluding plaster)(mm)	7樓、10樓、15樓、 18樓、21樓及25樓	160	160	160	160	160	160	160	160	160	160	160	160	160
層與層之間的高度(毫米) Floor-to-Floor Height (mm)	7/F, 10/F, 15/F, 18/F, 21/F and 25/F	2975, 3050, 3325	2975, 3050, 3325	2975, 3050, 3150, 3325	2975, 3050, 3150, 3325	2975, 3050, 3150, 3325	2975, 3050, 3150, 3325	2975, 3050, 3325	2975, 3050, 3325	2975, 3050, 3150, 3325	2975, 3050, 3150, 3325	2975, 3050, 3150, 3325	2975, 3050, 3150, 3325	2975, 3050, 3150, 3325

因住宅物業的較高樓層的結構牆的厚度遞減，較高樓層的內部面積，一般比較低樓層的內部面積稍大。
 The internal areas of residential properties on the upper floors will generally be slightly larger than those on the lower floors because of the reducing thickness of the structural walls on the upper floors.

請參閱本售樓說明書第23頁為期數的住宅物業的樓面平面圖而設之備註和圖例。
 Please refer to page 23 of this sales brochure for the notes and legends for the floor plans of residential properties in the Phase.

10 期數的住宅物業的樓面平面圖

FLOOR PLANS OF RESIDENTIAL PROPERTIES IN THE PHASE

每個住宅物業 Each Residential Property	樓層 Floor	單位 Flat										
		A	B	C	D	E	F	G	H	K	L	M
樓板(不包括灰泥)的厚度(毫米) Thickness of Floor Slab (excluding plaster)(mm)	27樓 27/F	160	160	160	160	160	160	160	160	160	160	160
層與層之間的高度(毫米) Floor-to-Floor Height (mm)		2975, 3050, 3325	2975, 3050, 3325	2975, 3050, 3150, 3325	2975, 3050, 3150, 3325	2975, 3050, 3150, 3325	2975, 3050, 3150, 3325	2975, 3050, 3325	2975, 3050, 3325	2975, 3050, 3150, 3325	2975, 3050, 3150, 3325	2975, 3050, 3150, 3325

因住宅物業的較高樓層的結構牆的厚度遞減，較高樓層的內部面積，一般比較低樓層的內部面積稍大。
 The internal areas of residential properties on the upper floors will generally be slightly larger than those on the lower floors because of the reducing thickness of the structural walls on the upper floors.

請參閱本售樓說明書第23頁為期數的住宅物業的樓面平面圖而設之備註和圖例。
 Please refer to page 23 of this sales brochure for the notes and legends for the floor plans of residential properties in the Phase.

10

FLOOR PLANS OF RESIDENTIAL PROPERTIES IN THE PHASE

28樓
28/F



備註：平面圖所列數字為以毫米標示之建築結構尺寸。

Note : The dimensions of floor plans are all structural dimensions in millimeter.

比例尺 Scale  0M(米) 5M(米)

10 期數的住宅物業的樓面平面圖

FLOOR PLANS OF RESIDENTIAL PROPERTIES IN THE PHASE

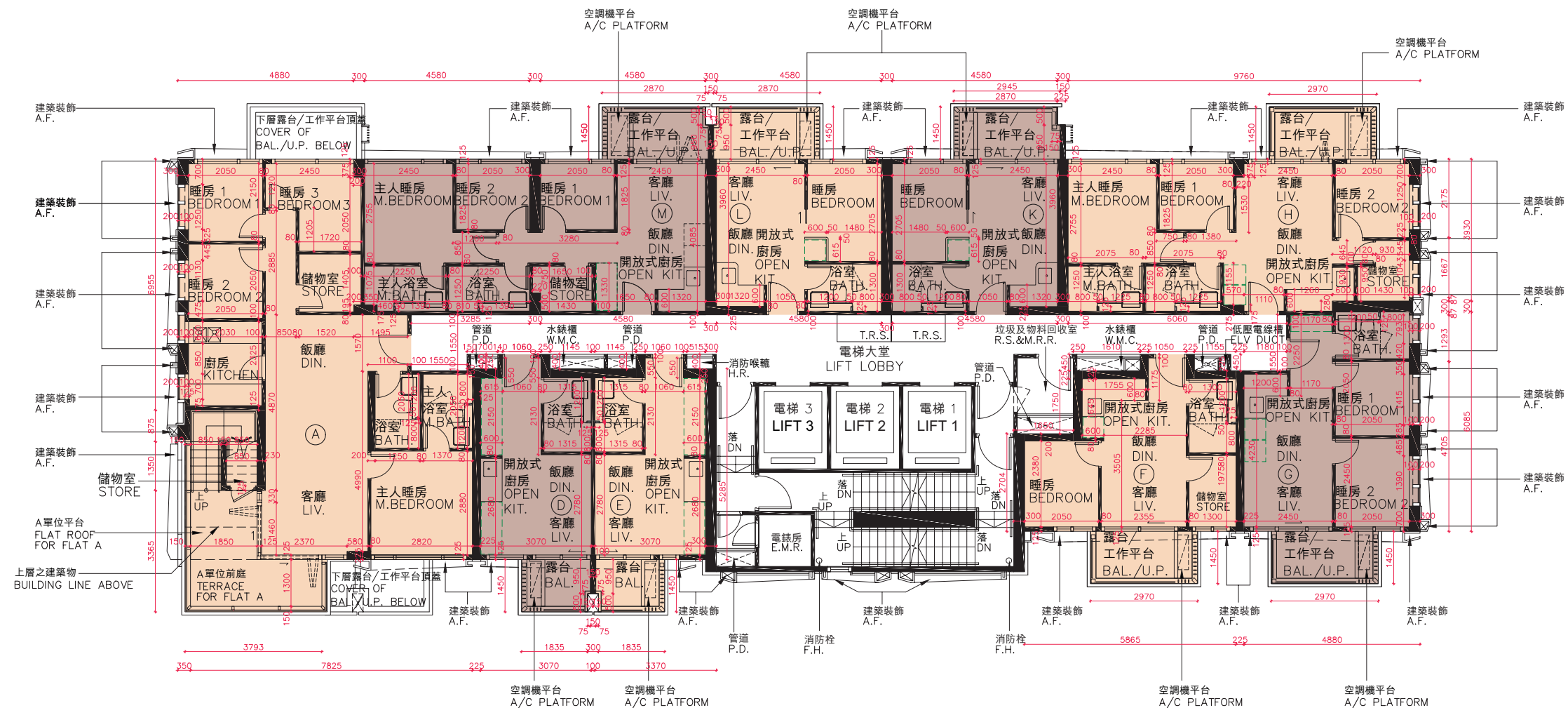
每個住宅物業 Each Residential Property	樓層 Floor	單位 Flat										
		A	B	C	D	E	F	G	H	K	L	M
樓板(不包括灰泥)的厚度(毫米) Thickness of Floor Slab (excluding plaster)(mm)	28樓 28/F	160, 175	160, 175	160, 175	160, 175	160, 175	160, 175	160, 175	160, 175	160, 175	160, 175	160, 175
層與層之間的高度(毫米) Floor-to-Floor Height (mm)		2975, 3050, 3325	3050, 3125, 3300, 3325	2975, 3050, 3300, 3325	2975, 3050, 3150, 3325	2975, 3050, 3150, 3325	2975, 3050, 3150, 3325	2975, 3050, 3325	2975, 3050, 3325	2975, 3050, 3150, 3325	2975, 3050, 3150, 3325	3050, 3325

因住宅物業的較高樓層的結構牆的厚度遞減，較高樓層的內部面積，一般比較低樓層的內部面積稍大。
 The internal areas of residential properties on the upper floors will generally be slightly larger than those on the lower floors because of the reducing thickness of the structural walls on the upper floors.

請參閱本售樓說明書第23頁為期數的住宅物業的樓面平面圖而設之備註和圖例。
 Please refer to page 23 of this sales brochure for the notes and legends for the floor plans of residential properties in the Phase.

10 期數的住宅物業的樓面平面圖 FLOOR PLANS OF RESIDENTIAL PROPERTIES IN THE PHASE

29樓
29/F



備註：平面圖所列數字為以毫米標示之建築結構尺寸。
Note: The dimensions of floor plans are all structural dimensions in millimeter.

比例尺 Scale 0M(米) 5M(米)

10 期數的住宅物業的樓面平面圖

FLOOR PLANS OF RESIDENTIAL PROPERTIES IN THE PHASE

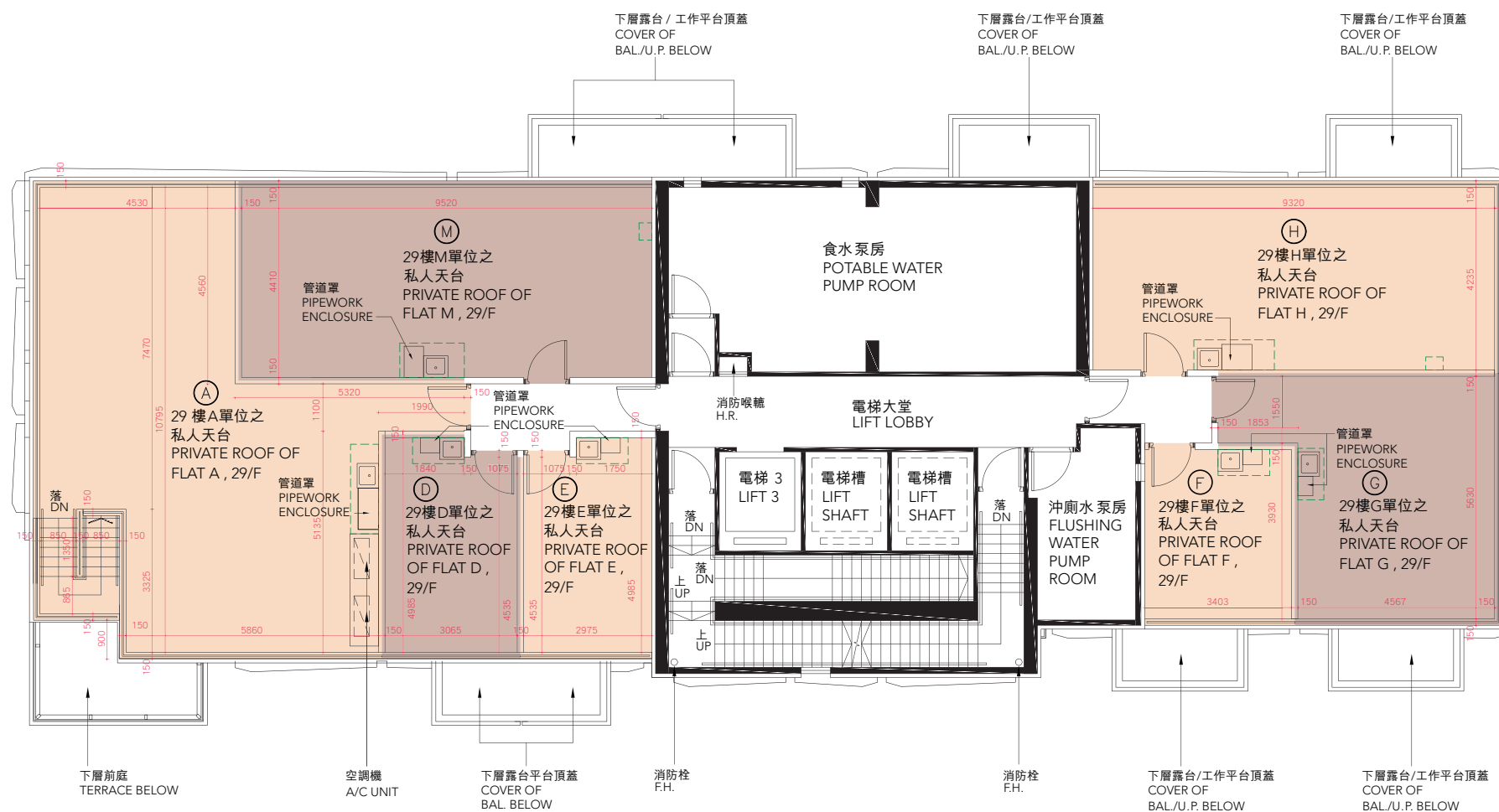
每個住宅物業 Each Residential Property	樓層 Floor	單位 Flat								
		A	D	E	F	G	H	K	L	M
樓板(不包括灰泥)的厚度(毫米) Thickness of Floor Slab (excluding plaster)(mm)	29樓 29/F	175	160, 200	160, 200	160, 175	160, 175	160, 175	160, 200	160, 175	160, 175
層與層之間的高度(毫米) Floor-to-Floor Height (mm)		3500	3500, 3525	3500, 3525	3500, 3525	3500, 3525	3500, 3525	3375, 3500	3375, 3500	3375, 3500

因住宅物業的較高樓層的結構牆的厚度遞減，較高樓層的內部面積，一般比較低樓層的內部面積稍大。
 The internal areas of residential properties on the upper floors will generally be slightly larger than those on the lower floors because of the reducing thickness of the structural walls on the upper floors.

請參閱本售樓說明書第23頁為期數的住宅物業的樓面平面圖而設之備註和圖例。
 Please refer to page 23 of this sales brochure for the notes and legends for the floor plans of residential properties in the Phase.

10 期數的住宅物業的樓面平面圖 FLOOR PLANS OF RESIDENTIAL PROPERTIES IN THE PHASE

天台
ROOF



備註：平面圖所列數字為以毫米標示之建築結構尺寸。
Note: The dimensions of floor plans are all structural dimensions in millimeter.

比例尺 Scale 0M(米) 5M(米)

10 期數的住宅物業的樓面平面圖

FLOOR PLANS OF RESIDENTIAL PROPERTIES IN THE PHASE

每個住宅物業 Each Residential Property	樓層 Floor	單位 Flat						
		A	D	E	F	G	H	M
樓板(不包括灰泥)的厚度(毫米) Thickness of Floor Slab (excluding plaster)(mm)	天台 Roof	不適用 Not applicable	不適用 Not applicable	不適用 Not applicable	不適用 Not applicable	不適用 Not applicable	不適用 Not applicable	不適用 Not applicable
層與層之間的高度(毫米) Floor-to-Floor Height (mm)		不適用 Not applicable	不適用 Not applicable	不適用 Not applicable	不適用 Not applicable	不適用 Not applicable	不適用 Not applicable	不適用 Not applicable

因住宅物業的較高樓層的結構牆的厚度遞減，較高樓層的內部面積，一般比較低樓層的內部面積稍大。
 The internal areas of residential properties on the upper floors will generally be slightly larger than those on the lower floors because of the reducing thickness of the structural walls on the upper floors.

請參閱本售樓說明書第23頁為期數的住宅物業的樓面平面圖而設之備註和圖例。
 Please refer to page 23 of this sales brochure for the notes and legends for the floor plans of residential properties in the Phase.