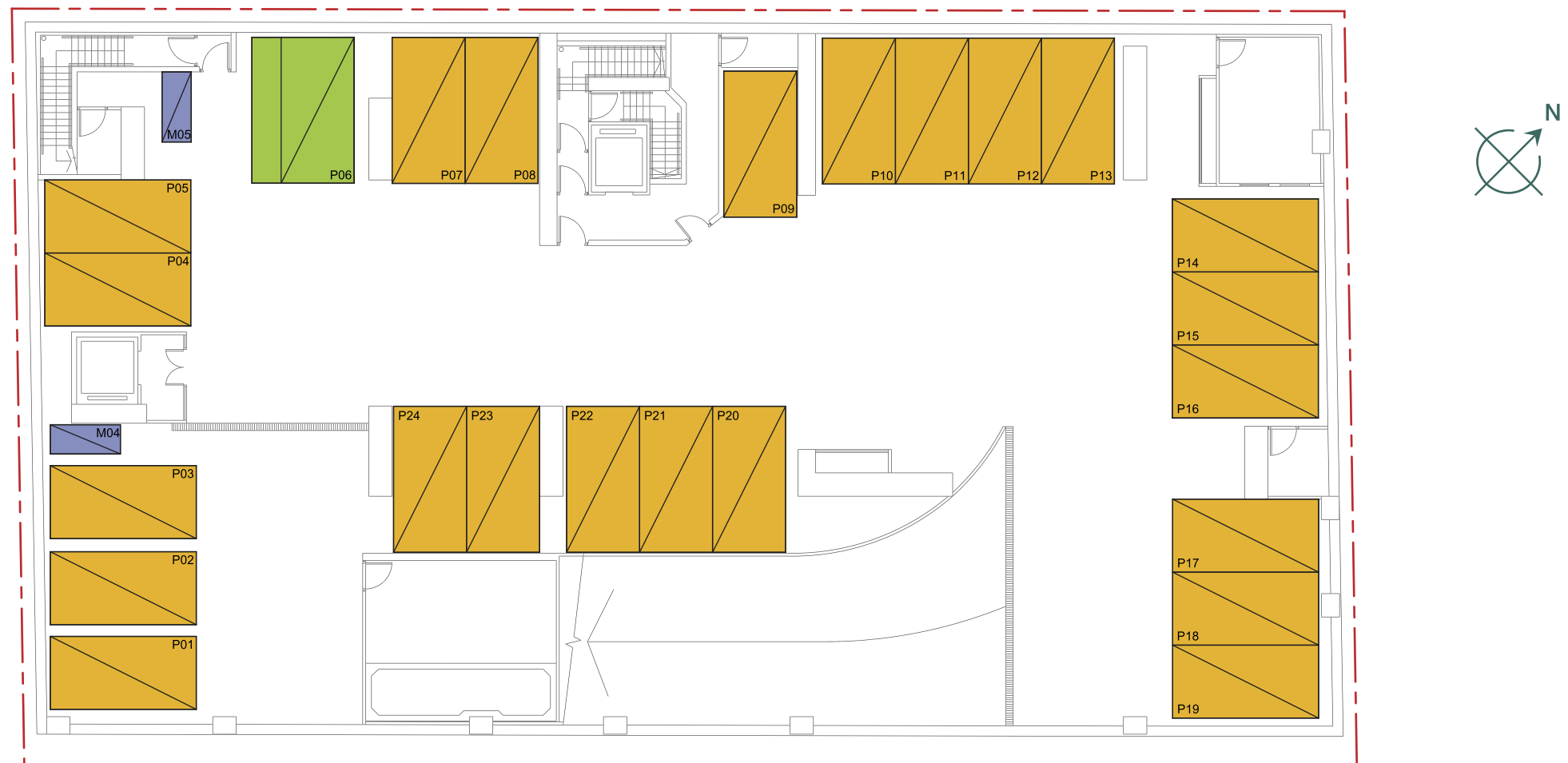


12 期數中的停車位的樓面平面圖 FLOOR PLANS OF PARKING SPACES IN THE PHASE

地庫2層
BASEMENT
LEVEL 2



圖例 LEGEND

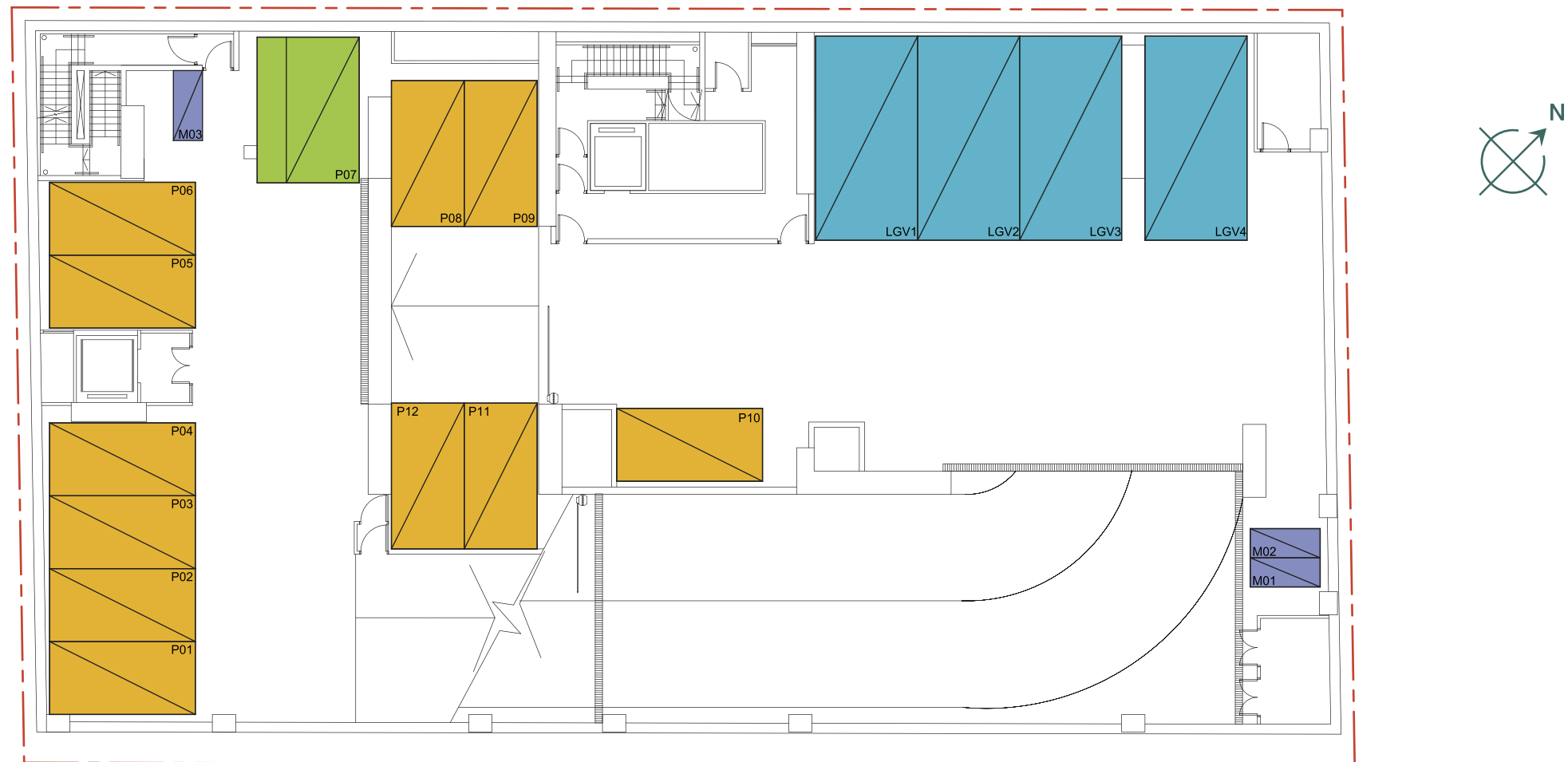
期數的界線
Boundary of the Phase

停車位類別 Type of Parking Space	位置 Location	數量 No.	尺寸(長 x 闊) (米) Dimension (L x W) (m)	每個停車位面積 (平方米) Area of each Parking Space (sq.m.)
 私家車停車位* Private Car Parking Space*	地庫2層 Basement Level 2	23	5.0 X 2.5	12.5
 暢通易達停車位 Accessible Parking Space		1	5.0 X 3.5	17.5
 電單車停車位 Motorcycle Parking Space		2	2.4 X 1.0	2.4

* 地庫1層及地庫2層合共有私家車停車位34個，其中5個為訪客停車位。
There are total 34 nos. of Private Car Parking Space on Basement Level 1 and Basement Level 2, including 5 nos. of Visitor's Parking Space.


12 期數中的停車位的樓面平面圖 FLOOR PLANS OF PARKING SPACES IN THE PHASE

地庫1層
BASEMENT
LEVEL 1



停車位類別 Type of Parking Space	位置 Location	數量 No.	尺寸(長 x 闊) (米) Dimension (L x W) (m)	每個停車位面積 (平方米) Area of each Parking Space (sq.m.)
 私家車停車位* Private Car Parking Space*	地庫1層 Basement Level 1	11	5.0 X 2.5	12.5
 暢通易達停車位 Accessible Parking Space		1	5.0 X 3.5	17.5
 貨車停車位 Lorry Parking Space		4	7.0 X 3.5	24.5
 電單車停車位 Motorcycle Parking Space		3	2.4 X 1.0	2.4

圖例 LEGEND

 期數的界線
Boundary of the Phase

* 地庫1層及地庫2層合共有私家車停車位34個，其中5個為訪客停車位。
There are total 34 nos. of Private Car Parking Space on Basement Level 1 and Basement Level 2, including 5 nos. of Visitor's Parking Space.