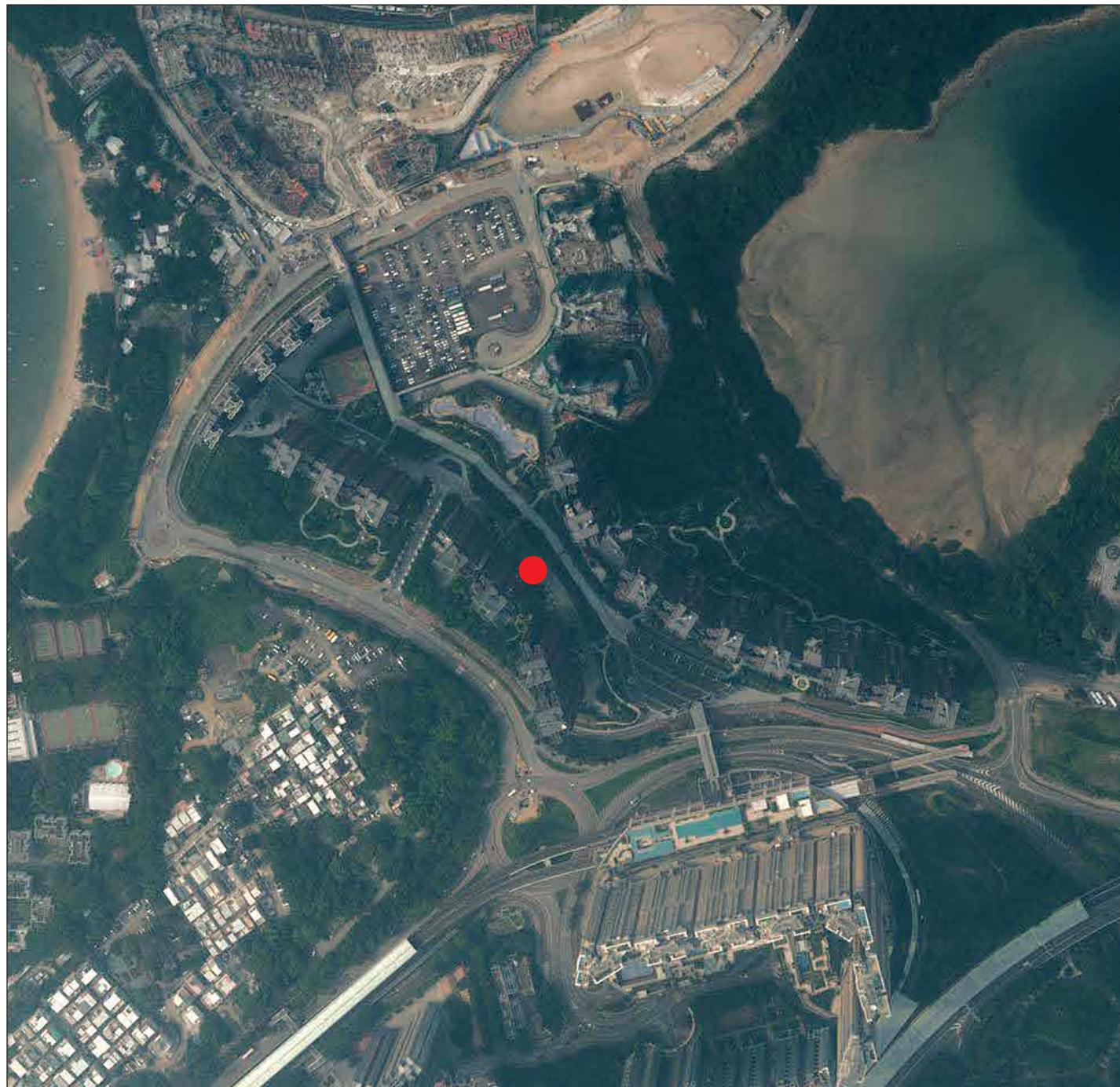


7. 期數的鳥瞰照片 AERIAL PHOTOGRAPH OF THE PHASE



● 期數的位置
Location of the Phase

摘錄自地政總署測繪處於2017年4月29日在烏溪沙6,900呎飛行高度拍攝之鳥瞰照片，編號為E023497C。

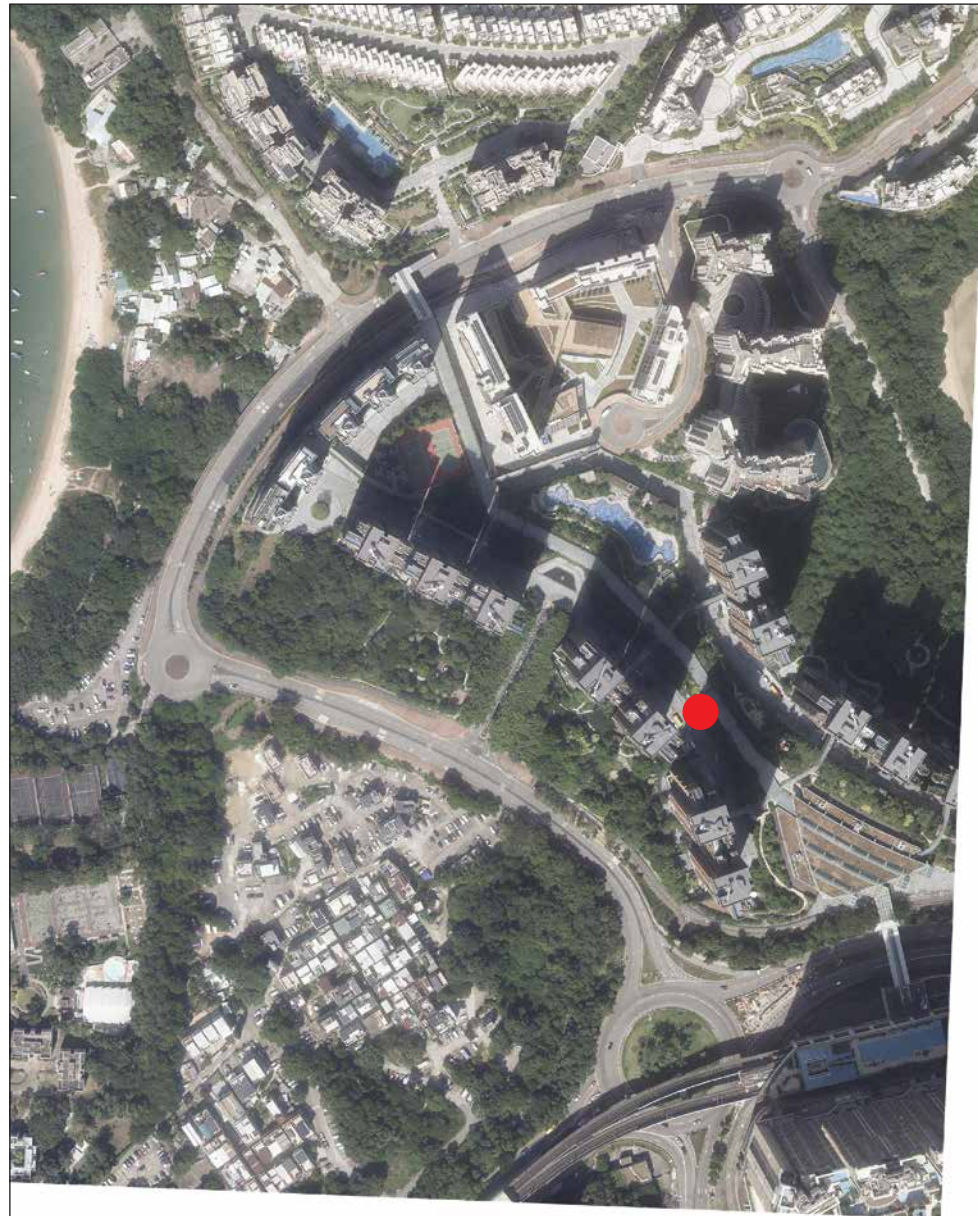
Adopted from part of the aerial photograph taken by the Survey and Mapping Office of Lands Department at a flying height 6,900 feet in Wu Kai Sha. Photo No. E023497C, dated 29th April 2017.

備註：因技術性問題，此鳥瞰照片所顯示的範圍超過《一手住宅物業銷售條例》的規定。

Note: Due to technical reasons, this aerial photograph has shown the area more than that required under the Residential Properties (First-hand Sales) Ordinance.

香港特別行政區政府地政總署測繪處 © 版權所有，未經許可，不得複製。
Survey and Mapping Office, Lands Department, The Government of HKSAR © Copyright reserved – reproduction by permission only.

7. 期數的鳥瞰照片 AERIAL PHOTOGRAPH OF THE PHASE



關乎期數的鳥瞰照片
並不覆蓋本空白範圍
THIS BLANK AREA FALLS
OUTSIDE THE COVERAGE
OF AERIAL PHOTOGRAPH
OF THE PHASE

● 期數的位置
Location of the Phase

摘錄自地政總署測繪處於2024年10月24日在烏溪沙 6,900 呎飛行高度拍攝之鳥瞰照片，編號為E237688C。

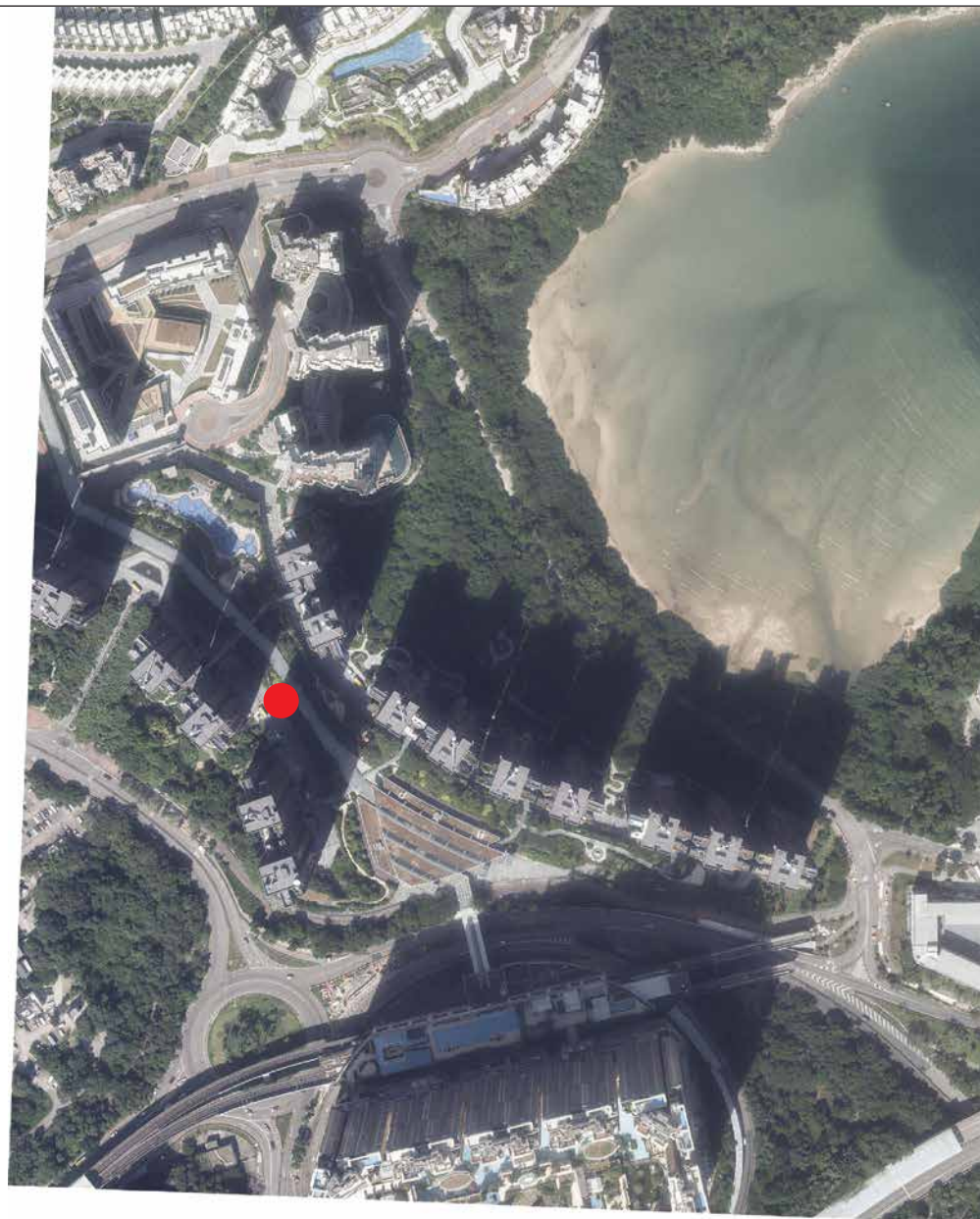
Adopted from part of the aerial photograph taken by the Survey and Mapping Office of Lands Department at a flying height 6,900 feet in Wu Kai Sha. Photo No. E237688C, dated 24th October 2024.

備註：因技術性問題，此鳥瞰照片所顯示的範圍超過《一手住宅物業銷售條例》的規定。

Note : Due to technical reasons, this aerial photograph has shown the area more than that required under the Residential Properties (First-hand Sales) Ordinance.

香港特別行政區政府地政總署測繪處 © 版權所有，未經許可，不得複製。
Survey and Mapping Office, Lands Department, The Government of HKSAR © Copyright reserved –
reproduction by permission only.

關乎期數的鳥瞰照片
並不覆蓋本空白範圍
THIS BLANK AREA FALLS
OUTSIDE THE COVERAGE
OF AERIAL PHOTOGRAPH
OF THE PHASE



● 期數的位置
Location of the Phase

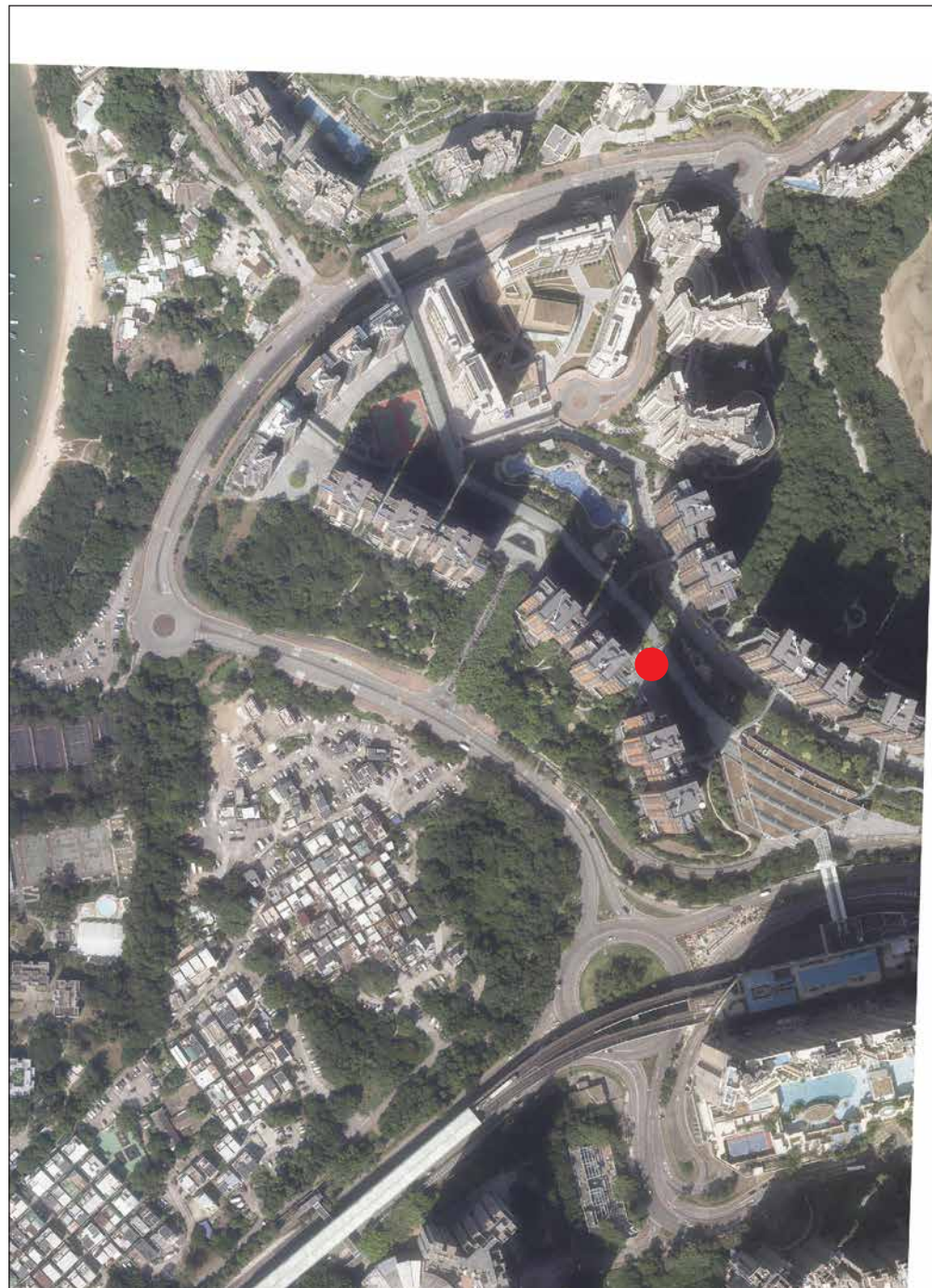
摘錄自地政總署測繪處於2024年10月24日在烏溪沙 6,900 呎飛行高度拍攝之鳥瞰照片，編號為E237686C。

Adopted from part of the aerial photograph taken by the Survey and Mapping Office of Lands Department at a flying height 6,900 feet in Wu Kai Sha. Photo No. E237686C, dated 24th October 2024.

備註：因技術性問題，此鳥瞰照片所顯示的範圍超過《一手住宅物業銷售條例》的規定。

Note: Due to technical reasons, this aerial photograph has shown the area more than that required under the Residential Properties (First-hand Sales) Ordinance.

7. 期數的鳥瞰照片 AERIAL PHOTOGRAPH OF THE PHASE



關乎期數的鳥瞰照片
並不覆蓋本空白範圍
THIS BLANK AREA FALLS
OUTSIDE THE COVERAGE
OF AERIAL PHOTOGRAPH
OF THE PHASE

● 期數的位置
Location of the Phase

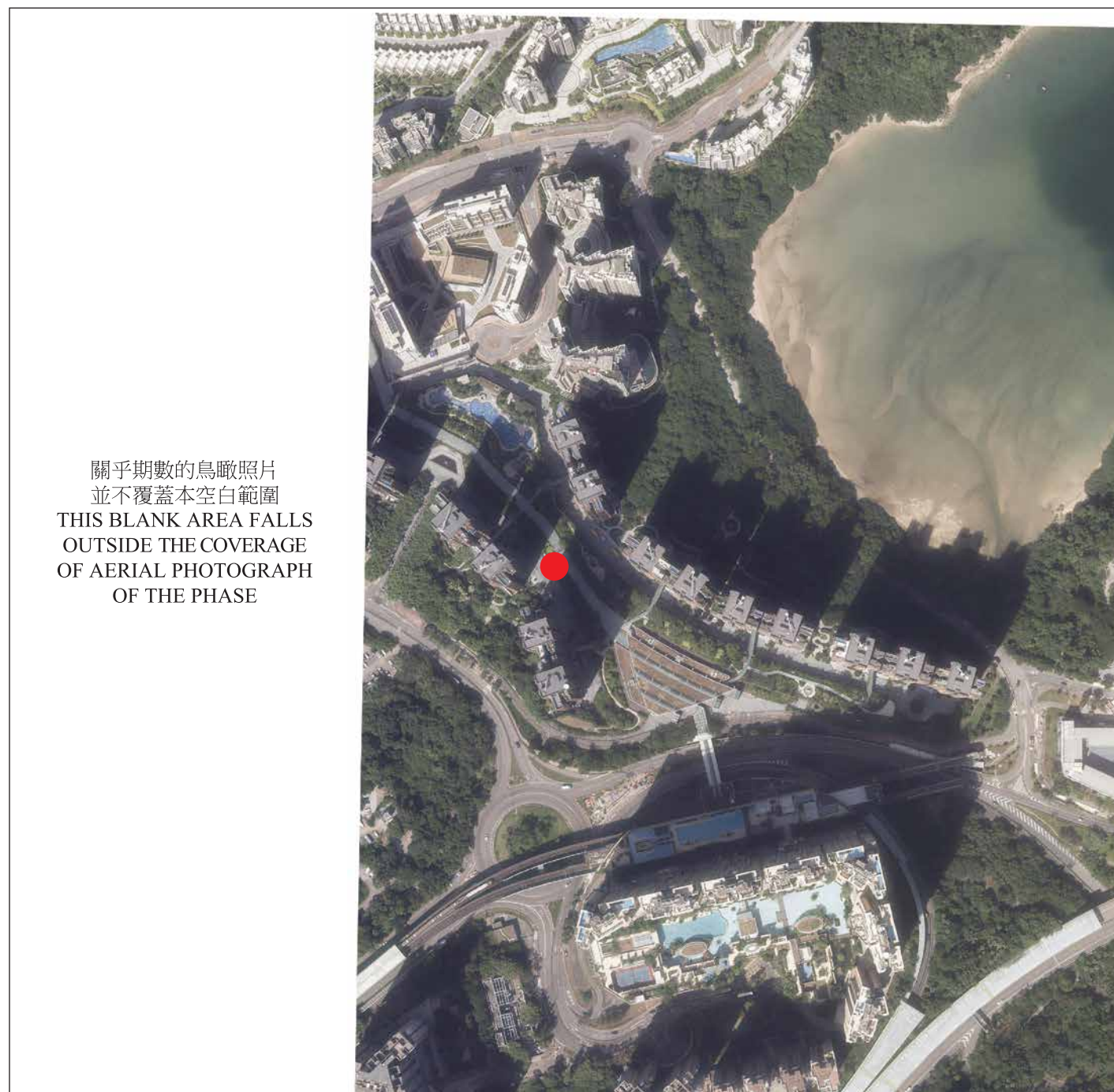
摘錄自地政總署測繪處於2024年10月24日在烏溪沙 6,900 呎飛行高度拍攝之鳥瞰照片，編號為E238034C。

Adopted from part of the aerial photograph taken by the Survey and Mapping Office of Lands Department at a flying height 6,900 feet in Wu Kai Sha. Photo No. E238034C, dated 24th October 2024.

備註：因技術性問題，此鳥瞰照片所顯示的範圍超過《一手住宅物業銷售條例》的規定。

Note: Due to technical reasons, this aerial photograph has shown the area more than that required under the Residential Properties (First-hand Sales) Ordinance.

香港特別行政區政府地政總署測繪處 © 版權所有，未經許可，不得複製。
Survey and Mapping Office, Lands Department, The Government of HKSAR © Copyright reserved –
reproduction by permission only.



關乎期數的鳥瞰照片
並不覆蓋本空白範圍
THIS BLANK AREA FALLS
OUTSIDE THE COVERAGE
OF AERIAL PHOTOGRAPH
OF THE PHASE

● 期數的位置
Location of the Phase

摘錄自地政總署測繪處於2024年10月24日在烏溪沙 6,900 呎飛行高度拍攝之鳥瞰照片，編號為E238032C。

Adopted from part of the aerial photograph taken by the Survey and Mapping Office of Lands Department at a flying height 6,900 feet in Wu Kai Sha. Photo No. E238032C, dated 24th October 2024.

備註：因技術性問題，此鳥瞰照片所顯示的範圍超過《一手住宅物業銷售條例》的規定。

Note: Due to technical reasons, this aerial photograph has shown the area more than that required under the Residential Properties (First-hand Sales) Ordinance.