

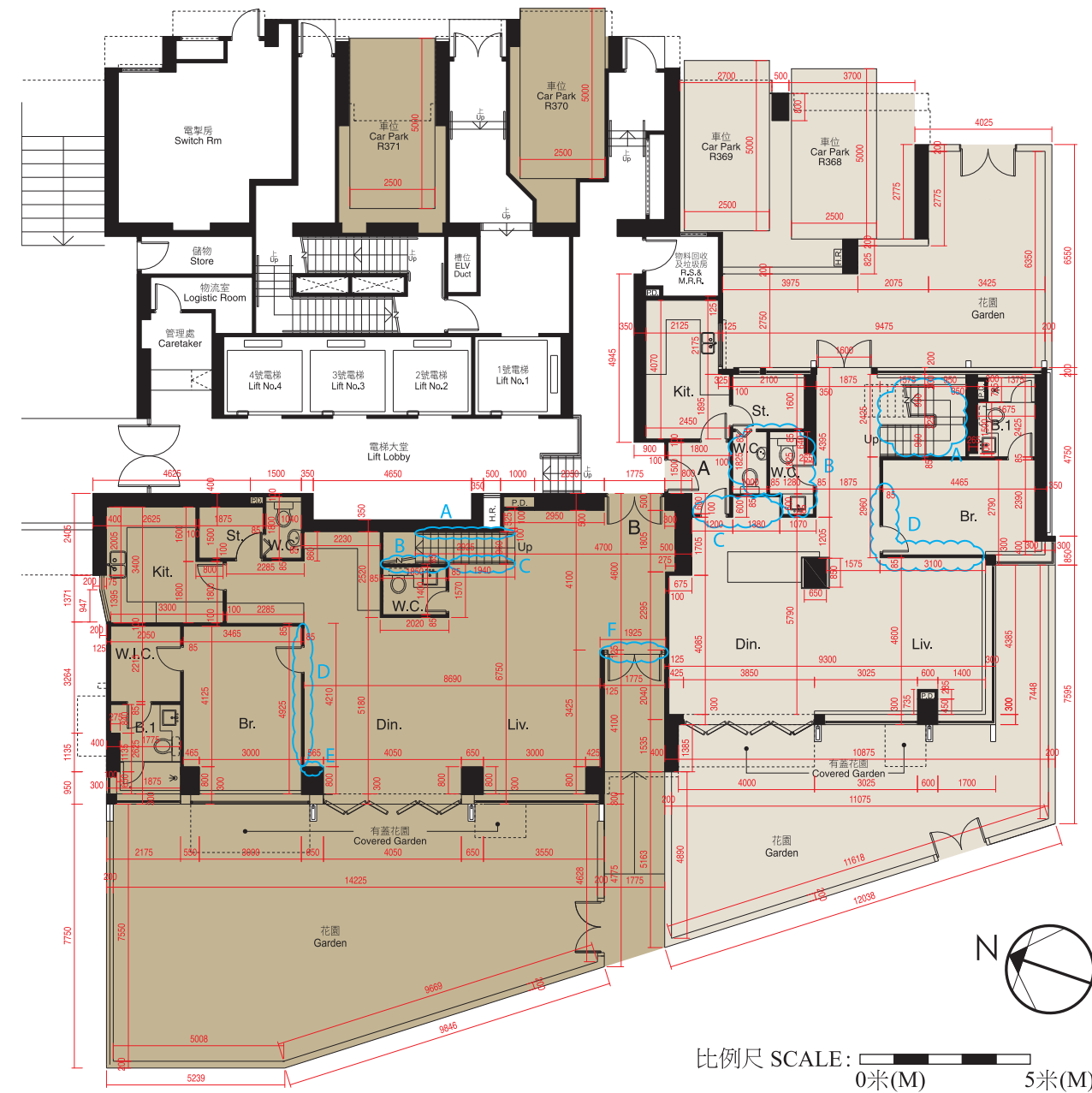
10. 期數的住宅物業的樓面平面圖

FLOOR PLANS OF RESIDENTIAL PROPERTIES IN THE PHASE

BLOCK 1 座

BLOCK 1 座

地下平面圖 (複式低層) GROUND FLOOR PLAN (LOWER DUPLEX)



註釋 Explanatory Note :

貼鄰住客停車位的面積(不計算入停車位面積或實用面積)：地下A單位為11.081平方米(119平方呎)，地下B單位為6.415平方米(69平方呎)。

由工作平台或露台遮蓋之花園面積(已計算入花園面積)：地下A單位為6.436平方米(69平方呎)，地下B單位為6.445平方米(69平方呎)。根據屋宇署規定，該面積最少兩邊不可圍封。

Area adjoining residential parking space (not included in the area of parking space or saleable area): Flat A on G/F is 11.081 sq.m. (119 sq.ft.), Flat B on G/F is 6.415 sq.m. (69 sq.ft.).

Area of garden covered by utility platform or balcony (included in the area of garden): Flat A on G/F is 6.436 sq.m. (69 sq.ft.), Flat B on G/F is 6.445 sq.m. (69 sq.ft.). Such areas shall be unenclosed on at least 2 sides as required by Buildings Department.

第1座地下及1樓A單位及B單位在發展項目落成後進行小型工程或獲《建築物條例》豁免的工程而有所改動。該等改動的大概位置已於本樓面平面圖中作標示。
Flat A & Flat B, G/F & 1/F of Block 1 have been altered by way of minor works or exempted works under the Buildings Ordinance after completion of the Development. The approximate locations of the alterations are indicated on this floor plan.

第1座地下及1樓A單位的改動工程包括:

- (A) 樓梯的原扶手被移除並以不同物料及設計的扶手取代。
- (B) 原有的兩個廁所及儲物間的分隔牆被移除，並以不同尺寸的分隔牆整合成為廁所、儲物間及通道。
- (C) 原大門被拆除並以間隔牆取代。
- (D) 原睡房的分隔牆被移除並以不同尺寸的玻璃間隔牆及趟門取代。

Alteration works for Flat A, G/F & 1/F of Block 1 include:

- (A) Original railing of the staircase was demolished and replaced by railing with different material and design.
- (B) Original partition walls of two washing chambers and store were demolished and integrated into washing chamber, store and corridor by partition walls in different dimensions.
- (C) Original door was demolished and replaced by partition wall.
- (D) Original partition walls of the bedroom were demolished and replaced by glass partition wall and sliding door in different dimensions.

第1座地下及1樓B單位的改動工程包括:

- (A) 樓梯的原扶手被移除並以不同物料及設計的扶手取代。
- (B) 原扶手被移除。
- (C) 部分樓梯加闊。
- (D) 原睡房的分隔牆被移除並以不同尺寸的玻璃間隔牆及趟門取代。
- (E) 部分牆體加厚。
- (F) 新增間隔牆及大門。

Alteration works for Flat B, G/F & 1/F of Block 1 include:

- (A) Original railing of the staircase was demolished and replaced by railing with different material and design.
- (B) Original railing was demolished.
- (C) Some of the staircases were widened.
- (D) Original partition walls of the bedroom were demolished and replaced by glass partition wall and sliding door in different dimensions.
- (E) Part of the wall were thickened.
- (F) Partition wall and door were added.

因住宅物業的較高樓層的結構牆的厚度遞減，較高樓層的內部面積，一般比較低樓層的內部面積稍大。請參閱本售樓說明書第31頁為住宅物業樓面平面圖而設之備註及名詞及簡稱的圖例。
The internal areas of the residential properties on the upper floors will generally be slightly larger than those on the lower floors because of the reducing thickness of the structural walls on the upper floors.
Please refer to page 31 of this sales brochure for the remarks and legends of the terms and abbreviations for the floor plans of residential properties.

備註 Note :

1. 平面圖所列數字為以毫米標示之建築結構尺寸。
 2. 以平方呎顯示之面積均依據1平方米=10.764平方呎換算，並四捨五入至整數。
1. The dimensions of floor plans are all structural dimensions in millimeter.
2. Areas in square feet are converted at a rate of 1 square metre to 10.764 square feet and rounded to the nearest integer.

每個住宅物業 Each Residential Property	單位 Unit 樓層 Floor	A	B
層與層之間的高度 Floor to Floor Height (毫米 mm)	G/F	3500	3500
樓板(不包括灰泥)的厚度 Thickness of Floor Slab (excluding plaster) (毫米 mm)	G/F	150, 175, 250	150, 175, 200, 250, 300

1樓平面圖 (複式高層) 1ST FLOOR PLAN (UPPER DUPLEX)



第1座地下及1樓A單位及B單位在發展項目落成後進行小型工程或獲《建築物條例》豁免的工程而有所改動。該等改動的大概位置已於本樓面平面圖中作標示。

Flat A & Flat B, G/F & 1/F of Block 1 have been altered by way of minor works or exempted works under the Buildings Ordinance after completion of the Development. The approximate locations of the alterations are indicated on this floor plan.

第1座地下及1樓A單位的改動工程包括:

- (E) 原有儲物間的分隔牆及門，及主人房門被移除，並以不同尺寸的分隔牆及門整合成一個較大的儲物間。
- (F) 樓梯的原扶手被移除並以不同物料及設計的扶手取代。
- (G) 原主人睡房門被移除並以不同尺寸之房門取代。

Alteration works for Flat A, G/F & 1/F of Block 1 include:

- (E) Original partition walls, doors of store and master bedroom were demolished and transformed into one larger store by partition walls in different dimensions.
- (F) Original railing of the staircase was demolished and replaced by railing with different material and design.
- (G) Original master bedroom door was demolished and replaced by door in different dimension.

因住宅物業的較高樓層的結構牆的厚度遞減，較高樓層的內部面積，一般比較低樓層的內部面積稍大。請參閱本售樓說明書第31頁為住宅物業樓面平面圖而設之備註及名詞及簡稱的圖例。

The internal areas of the residential properties on the upper floors will generally be slightly larger than those on the lower floors because of the reducing thickness of the structural walls on the upper floors.
Please refer to page 31 of this sales brochure for the remarks and legends of the terms and abbreviations for the floor plans of residential properties.

備註：平面圖所列數字為以毫米標示之建築結構尺寸。
Note : The dimensions of floor plans are all structural dimensions in millimeter.

每個住宅物業 Each Residential Property	單位 Unit 樓層 Floor	A	B
層與層之間的高度 Floor to Floor Height (毫米 mm)	1/F	3250	3250
樓板(不包括灰泥)的厚度 Thickness of Floor Slab (excluding plaster) (毫米 mm)	1/F	150, 200, 225, 250	150, 200, 250, 275, 350

10. 期數的住宅物業的樓面平面圖

FLOOR PLANS OF RESIDENTIAL PROPERTIES IN THE PHASE

BLOCK 1 座

BLOCK 1 座

地下之現狀間隔平面圖 (複式低層) AS-IS FLOOR PLAN FOR GROUND FLOOR (LOWER DUPLEX)

1樓之現狀間隔平面圖 (複式高層) AS-IS FLOOR PLAN FOR 1ST FLOOR PLAN (UPPER DUPLEX)



比例尺 SCALE: 0米(M) 5米(M)

因住宅物業的較高樓層的結構牆的厚度遞減，較高樓層的內部面積，一般比較低樓層的內部面積稍大。請參閱本售樓說明書第31頁為住宅物業樓面平面圖而設之備註及名詞及簡稱的圖例。

The internal areas of the residential properties on the upper floors will generally be slightly larger than those on the lower floors because of the reducing thickness of the structural walls on the upper floors.

Please refer to page 31 of this sales brochure for the remarks and legends of the terms and abbreviations for the floor plans of residential properties.

備註 Note:

1. 平面圖所列數字為以毫米標示之建築結構尺寸。
2. 以平方呎顯示之面積均依據1平方米=10.764平方呎換算，並四捨五入至整數。

1. The dimensions of floor plans are all structural dimensions in millimeter.
2. Areas in square feet are converted at a rate of 1 square metre to 10.764 square feet and rounded to the nearest integer.

每個住宅物業 Each Residential Property	單位 Unit 樓層 Floor	A	B
層與層之間的高度 Floor to Floor Height (毫米 mm)	G/F	3500	3500
樓板(不包括灰泥)的厚度 Thickness of Floor Slab (excluding plaster) (毫米 mm)	G/F	150, 175, 250	150, 175, 200, 250, 300

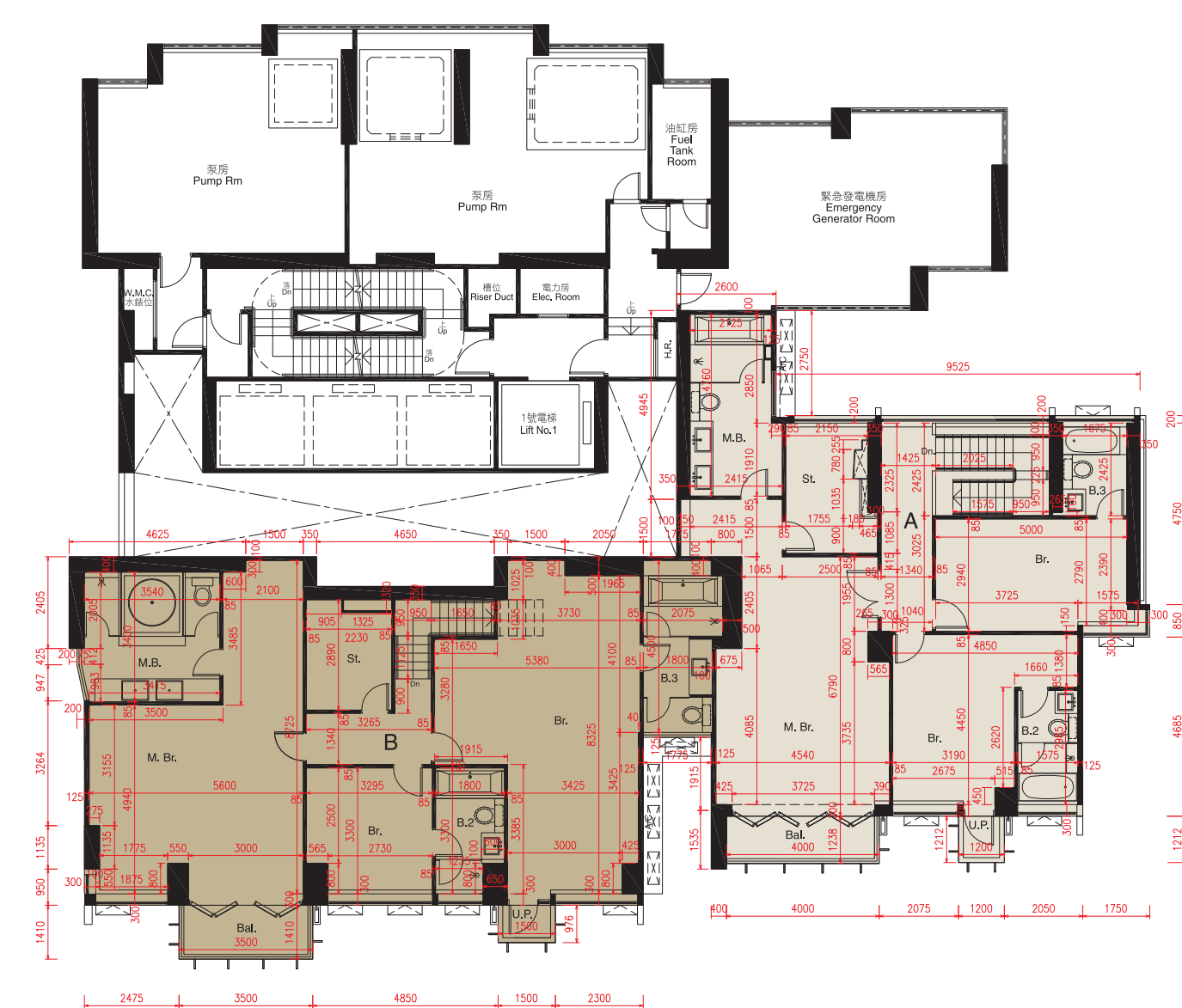
註釋 Explanatory Note:

貼鄰住客停車位的面積(不計算入停車位面積或實用面積): 地下A單位為11.081平方米(119平方呎), 地下B單位為6.415平方米(69平方呎)。

由工作平台或露台遮蓋之花園面積(已計算入花園面積): 地下A單位為6.436平方米(69平方呎), 地下B單位為6.445平方米(69平方呎)。根據屋宇署規定, 該面積最少兩邊不可圍封。

Area adjoining residential parking space (not included in the area of parking space or saleable area): Flat A on G/F is 11.081 sq.m. (119 sq.ft.), Flat B on G/F is 6.415 sq.m. (69 sq.ft.).

Area of garden covered by utility platform or balcony (included in the area of garden): Flat A on G/F is 6.436 sq.m. (69 sq.ft.), Flat B on G/F is 6.445 sq.m. (69 sq.ft.). Such areas shall be unenclosed on at least 2 sides as required by Buildings Department.



比例尺 SCALE: 0米(M) 5米(M)

因住宅物業的較高樓層的結構牆的厚度遞減，較高樓層的內部面積，一般比較低樓層的內部面積稍大。請參閱本售樓說明書第31頁為住宅物業樓面平面圖而設之備註及名詞及簡稱的圖例。

The internal areas of the residential properties on the upper floors will generally be slightly larger than those on the lower floors because of the reducing thickness of the structural walls on the upper floors.

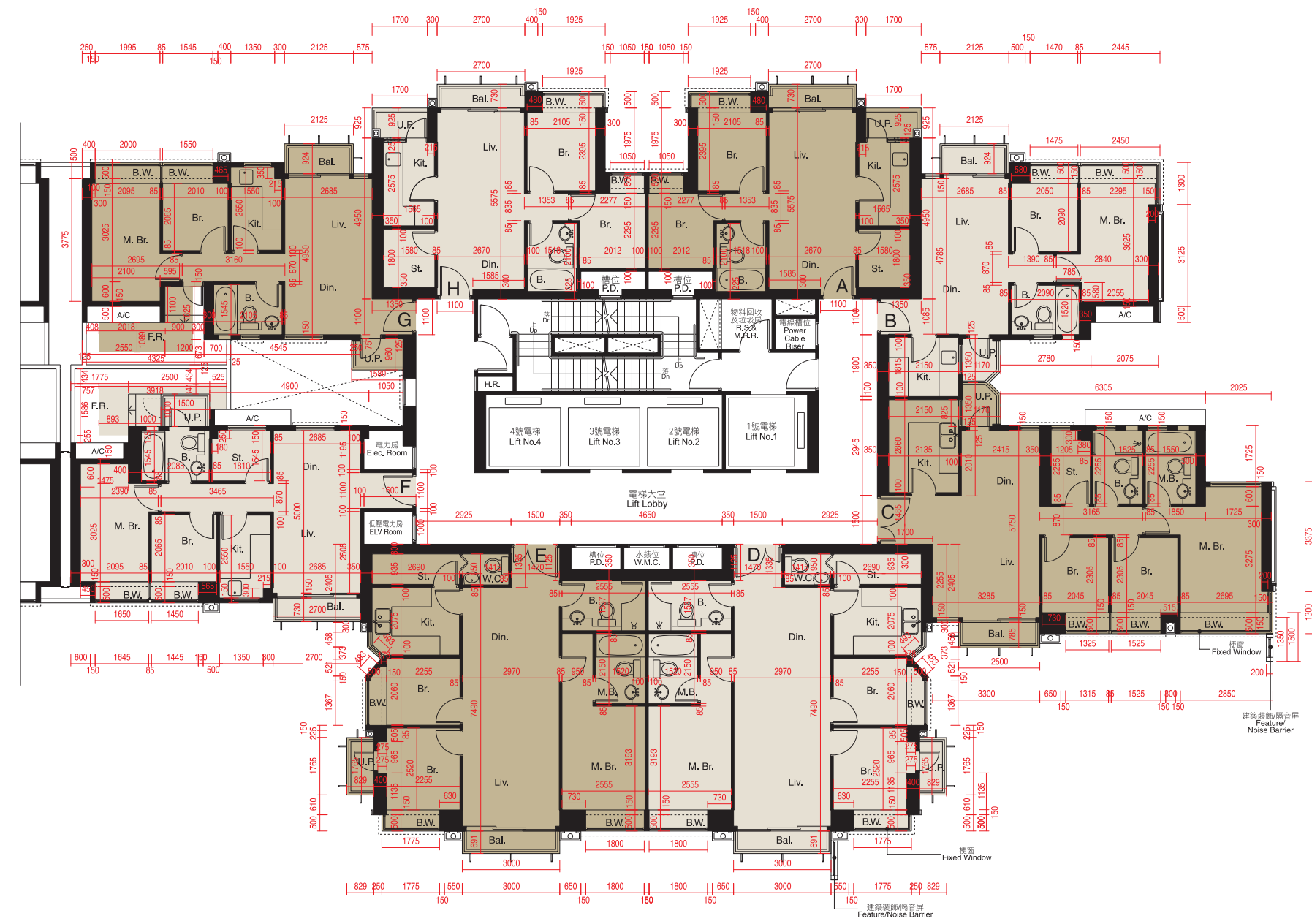
Please refer to page 31 of this sales brochure for the remarks and legends of the terms and abbreviations for the floor plans of residential properties.

每個住宅物業 Each Residential Property	單位 Unit 樓層 Floor	A	B
層與層之間的高度 Floor to Floor Height (毫米 mm)	1/F	3250	3250
樓板(不包括灰泥)的厚度 Thickness of Floor Slab (excluding plaster) (毫米 mm)	1/F	150, 200, 225, 250	150, 200, 250, 275, 350

10. 期數的住宅物業的樓面平面圖

FLOOR PLANS OF RESIDENTIAL PROPERTIES IN THE PHASE

3樓平面圖 3RD FLOOR PLAN



比例尺SCALE: 0米(M) 5米(M)

因住宅物業的較高樓層的結構牆的厚度遞減，較高樓層的內部面積，一般比較低樓層的內部面積稍大。
請參閱本售樓說明書第31頁為住宅物業樓面平面圖而設之備註及名詞及簡稱的圖例。

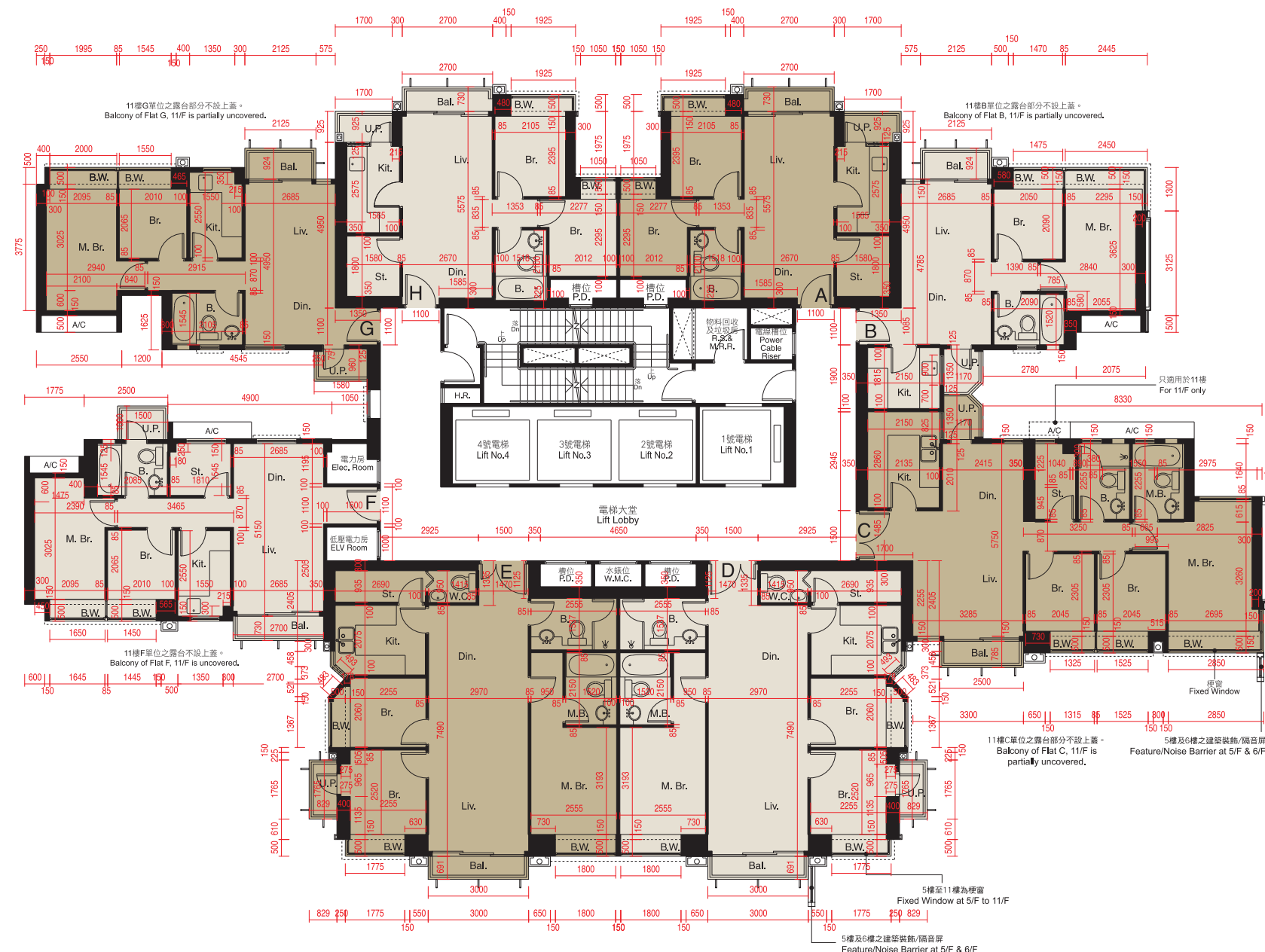
The internal areas of the residential properties on the upper floors will generally be slightly larger than those on the lower floors because of the reducing thickness of the structural walls on the upper floors.
Please refer to page 31 of this sales brochure for the remarks and legends of the terms and abbreviations for the floor plans of residential properties.

平台空白位置為供維修大廈設備使用的公用地方。
Blank areas on flat roof are common areas for building facility maintenance.

備註：平面圖所列數字為以毫米標示之建築結構尺寸。
Note: The dimensions of floor plans are all structural dimensions in millimeter.

BLOCK 1座

5樓 - 11樓及16樓平面圖 5TH - 11TH & 16TH FLOOR PLAN



比例尺SCALE: 0米(M) 5米(M)

因住宅物業的較高樓層的結構牆的厚度遞減，較高樓層的內部面積，一般比較低樓層的內部面積稍大。
請參閱本售樓說明書第31頁為住宅物業樓面平面圖而設之備註及名詞及簡稱的圖例。

The internal areas of the residential properties on the upper floors will generally be slightly larger than those on the lower floors because of the reducing thickness of the structural walls on the upper floors.
Please refer to page 31 of this sales brochure for the remarks and legends of the terms and abbreviations for the floor plans of residential properties.

備註：平面圖所列數字為以毫米標示之建築結構尺寸。
Note: The dimensions of floor plans are all structural dimensions in millimeter.

BLOCK 1座

每個住宅物業 Each Residential Property	單位 Unit 樓層 Floor	A	B	C	D	E	F	G	H
層與層之間的高度 Floor to Floor Height (毫米 mm)	3/F	3150	3150	3150	3150	3150	3150	3150	3150
樓板(不包括灰泥)的厚度 Thickness of Floor Slab (excluding plaster) (毫米 mm)	3/F	150, 200	150, 200	150, 175, 200	150, 200	150, 200	150, 200	150, 200	150, 200

每個住宅物業 Each Residential Property	單位 Unit 樓層 Floor	A	B	C	D	E	F	G	H
層與層之間的高度 Floor to Floor Height (毫米 mm)	5/F - 10/F & 16/F	3150	3150	3150	3150	3150	3150	3150	3150
	11/F	3150	2950, 3150	2800, 2950, 3150	3150	3150	2900, 2950, 3150	2900, 2950, 3150	3150
樓板(不包括灰泥)的厚度 Thickness of Floor Slab (excluding plaster) (毫米 mm)	5/F - 10/F & 16/F	150, 200	150, 200	150, 175, 200	150, 200	150, 200	150, 200	150, 200	150, 200
	11/F	150, 200	150, 200	150, 175, 200	150, 200	150, 200	150, 200	150, 200	150, 200

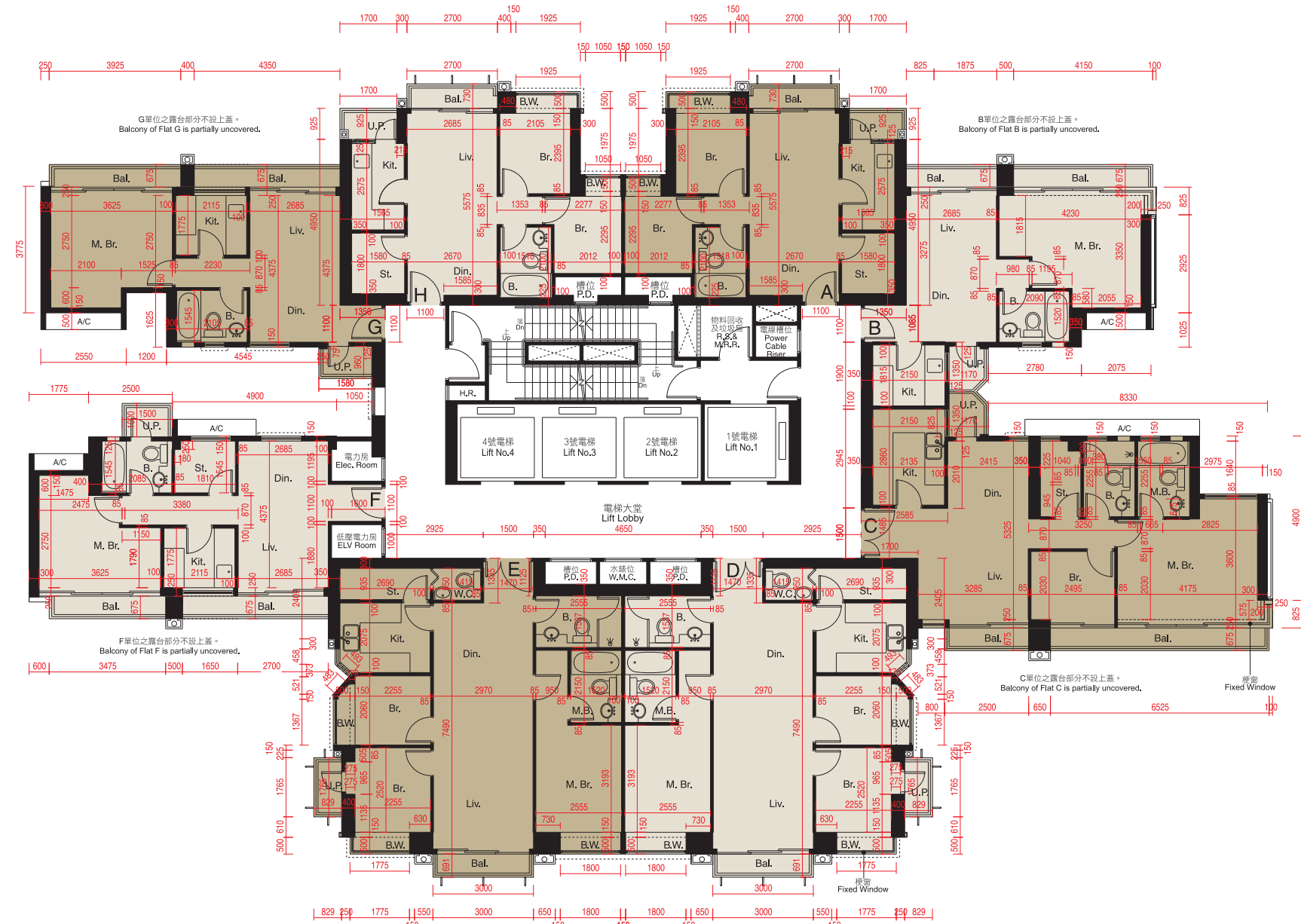
10. 期數的住宅物業的樓面平面圖

FLOOR PLANS OF RESIDENTIAL PROPERTIES IN THE PHASE

BLOCK 1 座

BLOCK 1 座

12樓平面圖 12TH FLOOR PLAN



比例尺SCALE: 0米(M) 5米(M)

因住宅物業的較高樓層的結構牆的厚度遞減，較高樓層的內部面積，一般比較低樓層的內部面積稍大。

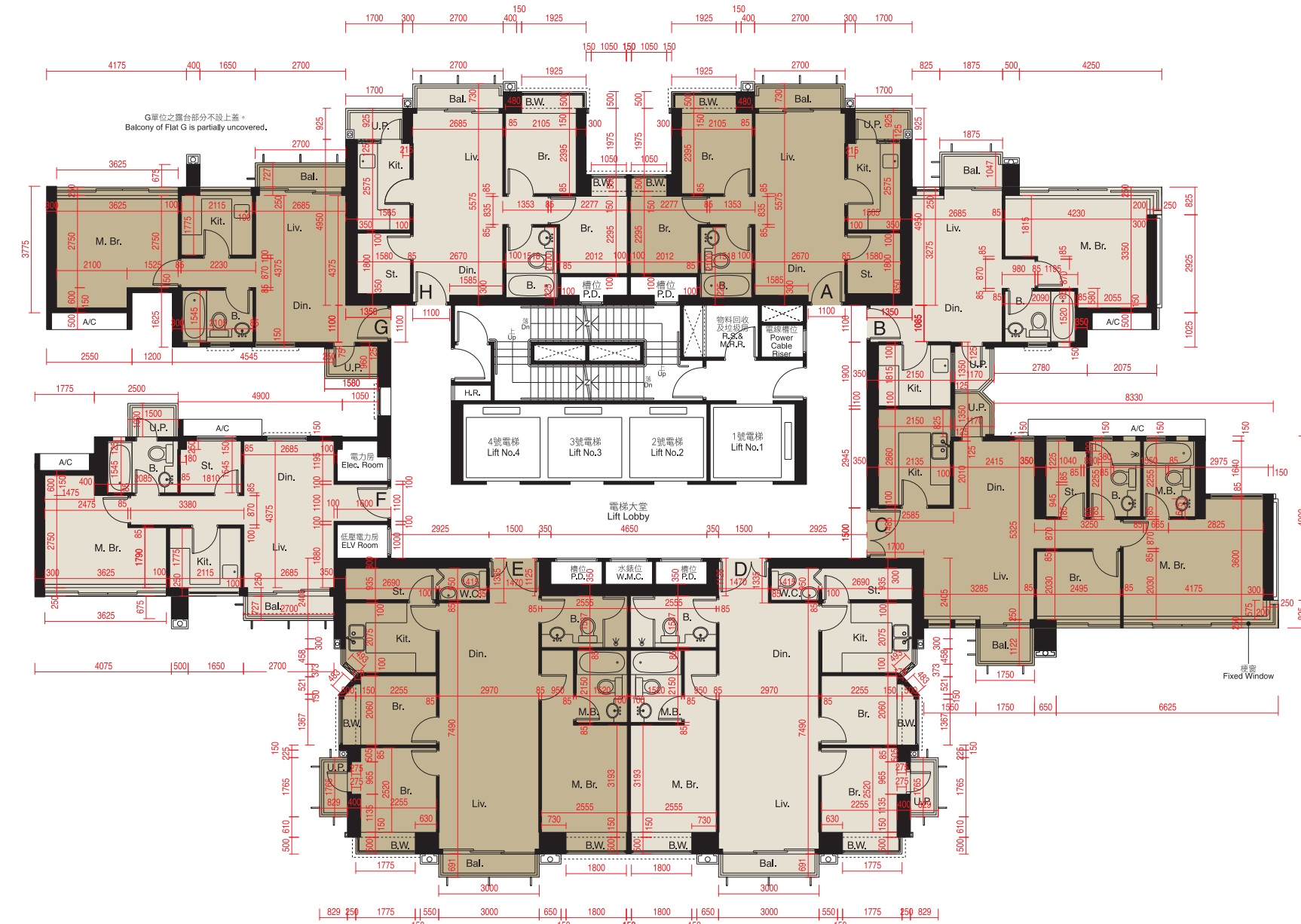
請參閱本售樓說明書第31頁為住宅物業樓面平面圖而設之備註及名詞及簡稱的圖例。

The internal areas of the residential properties on the upper floors will generally be slightly larger than those on the lower floors because of the reducing thickness of the structural walls on the upper floors.

Please refer to page 31 of this sales brochure for the remarks and legends of the terms and abbreviations for the floor plans of residential properties.

備註：平面圖所列數字為以毫米標示之建築結構尺寸。
Note: The dimensions of floor plans are all structural dimensions in millimeter.

15樓平面圖 15TH FLOOR PLAN



比例尺SCALE: 0米(M) 5米(M)

因住宅物業的較高樓層的結構牆的厚度遞減，較高樓層的內部面積，一般比較低樓層的內部面積稍大。

請參閱本售樓說明書第31頁為住宅物業樓面平面圖而設之備註及名詞及簡稱的圖例。

The internal areas of the residential properties on the upper floors will generally be slightly larger than those on the lower floors because of the reducing thickness of the structural walls on the upper floors.

Please refer to page 31 of this sales brochure for the remarks and legends of the terms and abbreviations for the floor plans of residential properties.

備註：平面圖所列數字為以毫米標示之建築結構尺寸。
Note: The dimensions of floor plans are all structural dimensions in millimeter.

每個住宅物業 Each Residential Property	樓層 Floor	單位 Unit	A	B	C	D	E	F	G	H
層與層之間的高度 Floor to Floor Height (毫米 mm)	12/F		3150	3150	3150	3150	3150	3150	3150	3150
樓板(不包括灰泥)的厚度 Thickness of Floor Slab (excluding plaster) (毫米 mm)	12/F		150, 200	150, 200	150, 175, 200	150, 200	150, 200	150, 200	150, 200	150, 200

每個住宅物業 Each Residential Property	樓層 Floor	單位 Unit	A	B	C	D	E	F	G	H
層與層之間的高度 Floor to Floor Height (毫米 mm)	15/F		3150	3150	2800, 3150	2950, 3150	2950, 3150	3150	3150	3150
樓板(不包括灰泥)的厚度 Thickness of Floor Slab (excluding plaster) (毫米 mm)	15/F		150, 200	150, 200	150, 175, 200	150, 200	150, 200	150, 200	150, 200	150, 200

10. 期數的住宅物業的樓面平面圖

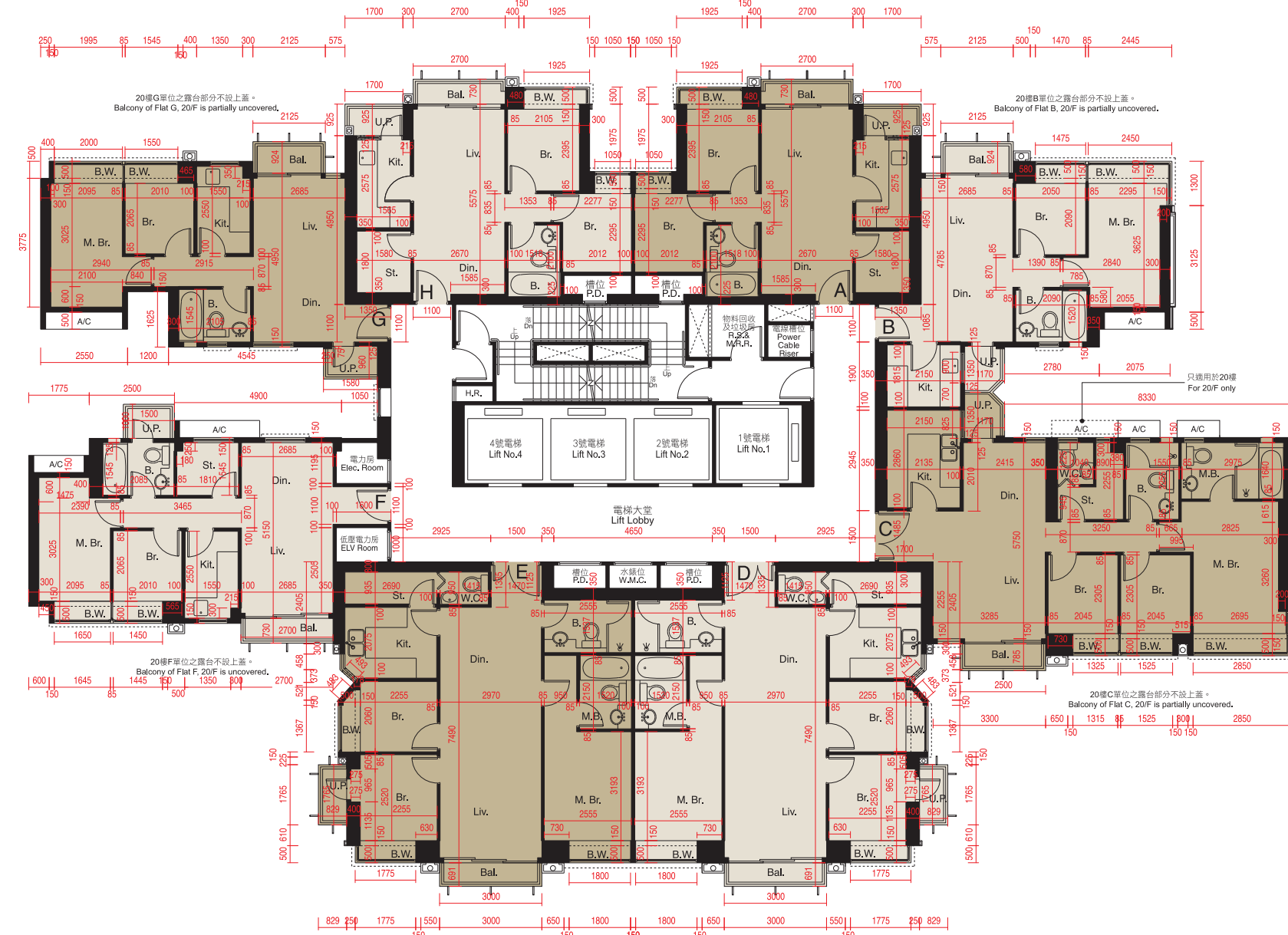
FLOOR PLANS OF RESIDENTIAL PROPERTIES IN THE PHASE

BLOCK 1座

BLOCK 1座

17樓 - 20樓及23樓平面圖 17TH - 20TH & 23RD FLOOR PLAN

21樓平面圖 21ST FLOOR PLAN



比例尺SCALE: 0米(M) 5米(M)

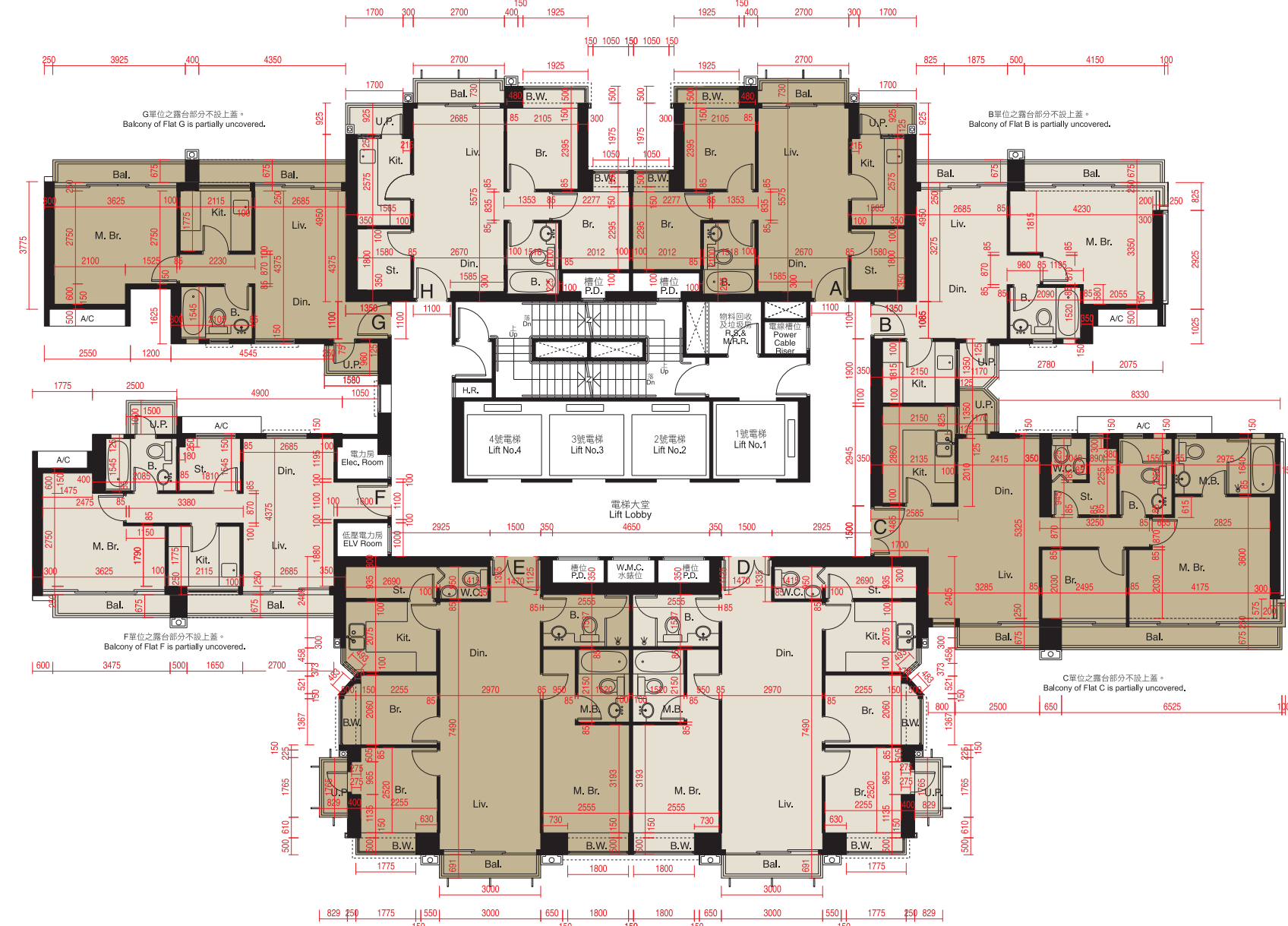
因住宅物業的較高樓層的結構牆的厚度遞減，較高樓層的內部面積，一般比較低樓層的內部面積稍大。

請參閱本售樓說明書第31頁為住宅物業樓面平面圖而設之備註及名詞及簡稱的圖例。

The internal areas of the residential properties on the upper floors will generally be slightly larger than those on the lower floors because of the reducing thickness of the structural walls on the upper floors.

Please refer to page 31 of this sales brochure for the remarks and legends of the terms and abbreviations for the floor plans of residential properties.

備註：平面圖所列數字為以毫米標示之建築結構尺寸。
Note: The dimensions of floor plans are all structural dimensions in millimeter.



比例尺SCALE: 0米(M) 5米(M)

因住宅物業的較高樓層的結構牆的厚度遞減，較高樓層的內部面積，一般比較低樓層的內部面積稍大。

請參閱本售樓說明書第31頁為住宅物業樓面平面圖而設之備註及名詞及簡稱的圖例。

The internal areas of the residential properties on the upper floors will generally be slightly larger than those on the lower floors because of the reducing thickness of the structural walls on the upper floors.

Please refer to page 31 of this sales brochure for the remarks and legends of the terms and abbreviations for the floor plans of residential properties.

備註：平面圖所列數字為以毫米標示之建築結構尺寸。
Note: The dimensions of floor plans are all structural dimensions in millimeter.



每個住宅物業 Each Residential Property	樓層 Floor	單位 Unit							
		A	B	C	D	E	F	G	H
層與層之間的高度 Floor to Floor Height (毫米 mm)	17/F	3150	3150	2800, 3150	3150	3150	3150	3150	3150
	18/F, 19/F & 23/F	3150	3150	3150	3150	3150	3150	3150	3150
	20/F	3150	2950, 3150	2950, 3150	3150	3150	2900, 2950, 3150	2900, 2950, 3150	3150
樓板(不包括灰泥)的厚度 Thickness of Floor Slab (excluding plaster) (毫米 mm)	17/F	150, 200	150, 200	150, 175, 200	150, 200	150, 200	150, 200	150, 200	150, 200
	18/F, 19/F & 23/F	150, 200	150, 200	150, 175, 200	150, 200	150, 200	150, 200	150, 200	150, 200
	20/F	150, 200	150, 200	150, 175, 200	150, 200	150, 200	150, 200	150, 200	150, 200

每個住宅物業 Each Residential Property	樓層 Floor	單位 Unit							
		A	B	C	D	E	F	G	H
層與層之間的高度 Floor to Floor Height (毫米 mm)	21/F	3150	3150	3150	3150	3150	3150	3150	3150
樓板(不包括灰泥)的厚度 Thickness of Floor Slab (excluding plaster) (毫米 mm)	21/F	150, 200	150, 200	150, 175, 200	150, 200	150, 200	150, 200	150, 200	150, 200

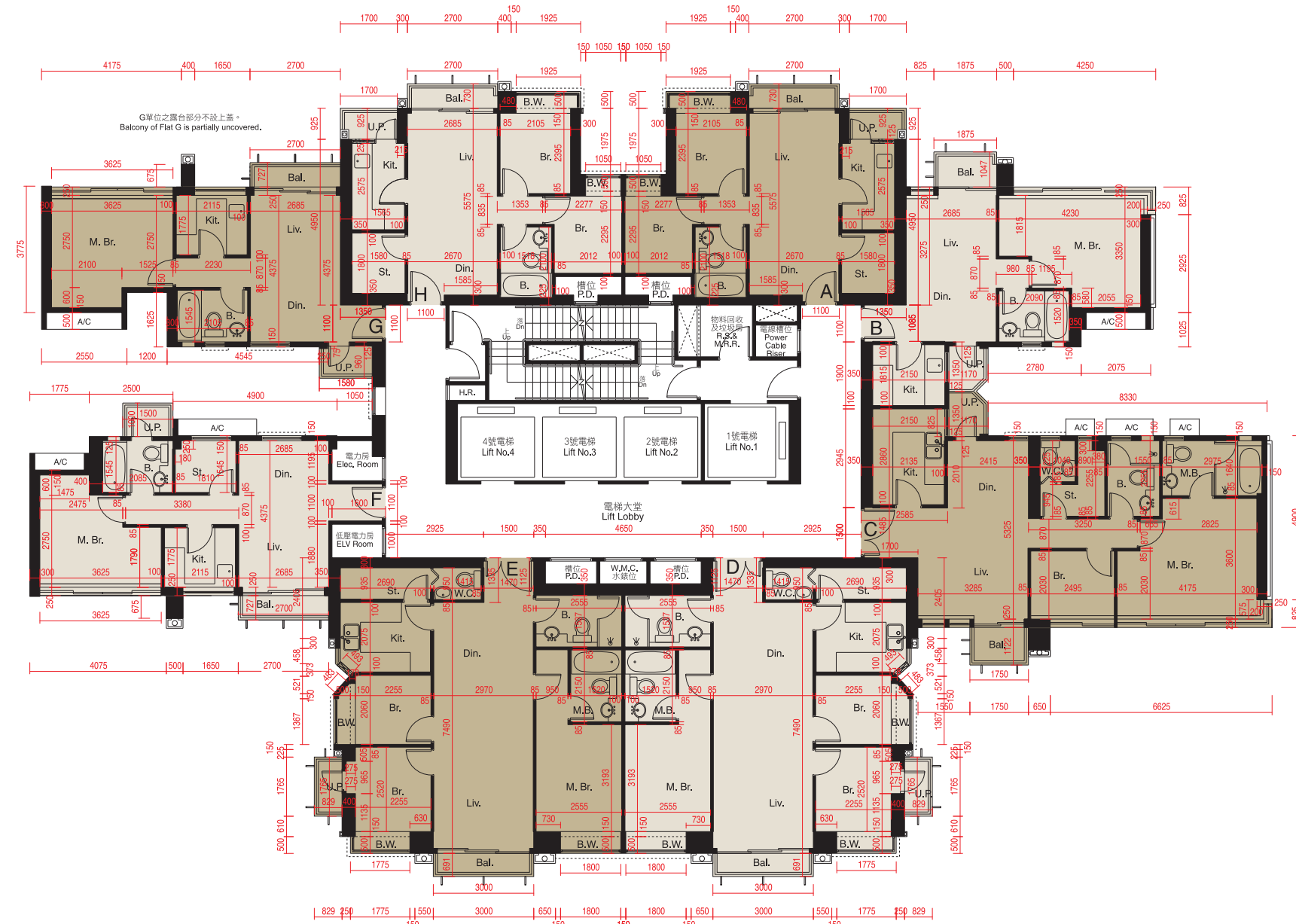
10. 期數的住宅物業的樓面平面圖

FLOOR PLANS OF RESIDENTIAL PROPERTIES IN THE PHASE

BLOCK 1 座

BLOCK 1 座

22樓平面圖 22ND FLOOR PLAN



比例尺SCALE: 0米(M) 5米(M)

因住宅物業的較高樓層的結構牆的厚度遞減，較高樓層的內部面積，一般比較低樓層的內部面積稍大。

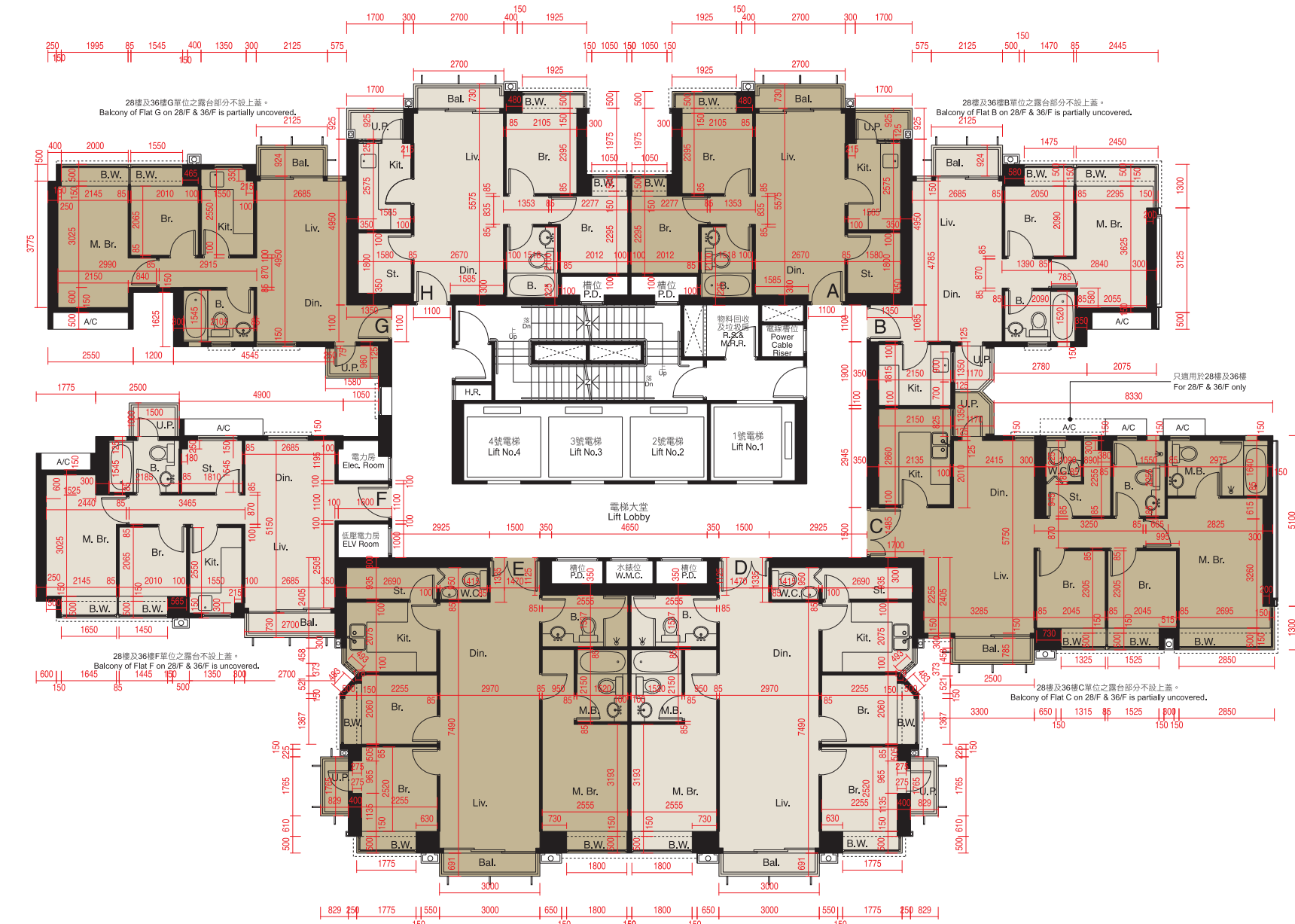
請參閱本售樓說明書第31頁為住宅物業樓面平面圖而設之備註及名詞及簡稱的圖例。

The internal areas of the residential properties on the upper floors will generally be slightly larger than those on the lower floors because of the reducing thickness of the structural walls on the upper floors.

Please refer to page 31 of this sales brochure for the remarks and legends of the terms and abbreviations for the floor plans of residential properties.

備註：平面圖所列數字為以毫米標示之建築結構尺寸。
Note: The dimensions of floor plans are all structural dimensions in millimeter.

25樓 - 28樓，31樓 - 33樓及35樓 - 36樓平面圖 25TH - 28TH, 31ST - 33RD & 35TH - 36TH FLOOR PLAN



比例尺SCALE: 0米(M) 5米(M)

因住宅物業的較高樓層的結構牆的厚度遞減，較高樓層的內部面積，一般比較低樓層的內部面積稍大。

請參閱本售樓說明書第31頁為住宅物業樓面平面圖而設之備註及名詞及簡稱的圖例。

The internal areas of the residential properties on the upper floors will generally be slightly larger than those on the lower floors because of the reducing thickness of the structural walls on the upper floors.

Please refer to page 31 of this sales brochure for the remarks and legends of the terms and abbreviations for the floor plans of residential properties.

備註：平面圖所列數字為以毫米標示之建築結構尺寸。
Note: The dimensions of floor plans are all structural dimensions in millimeter.

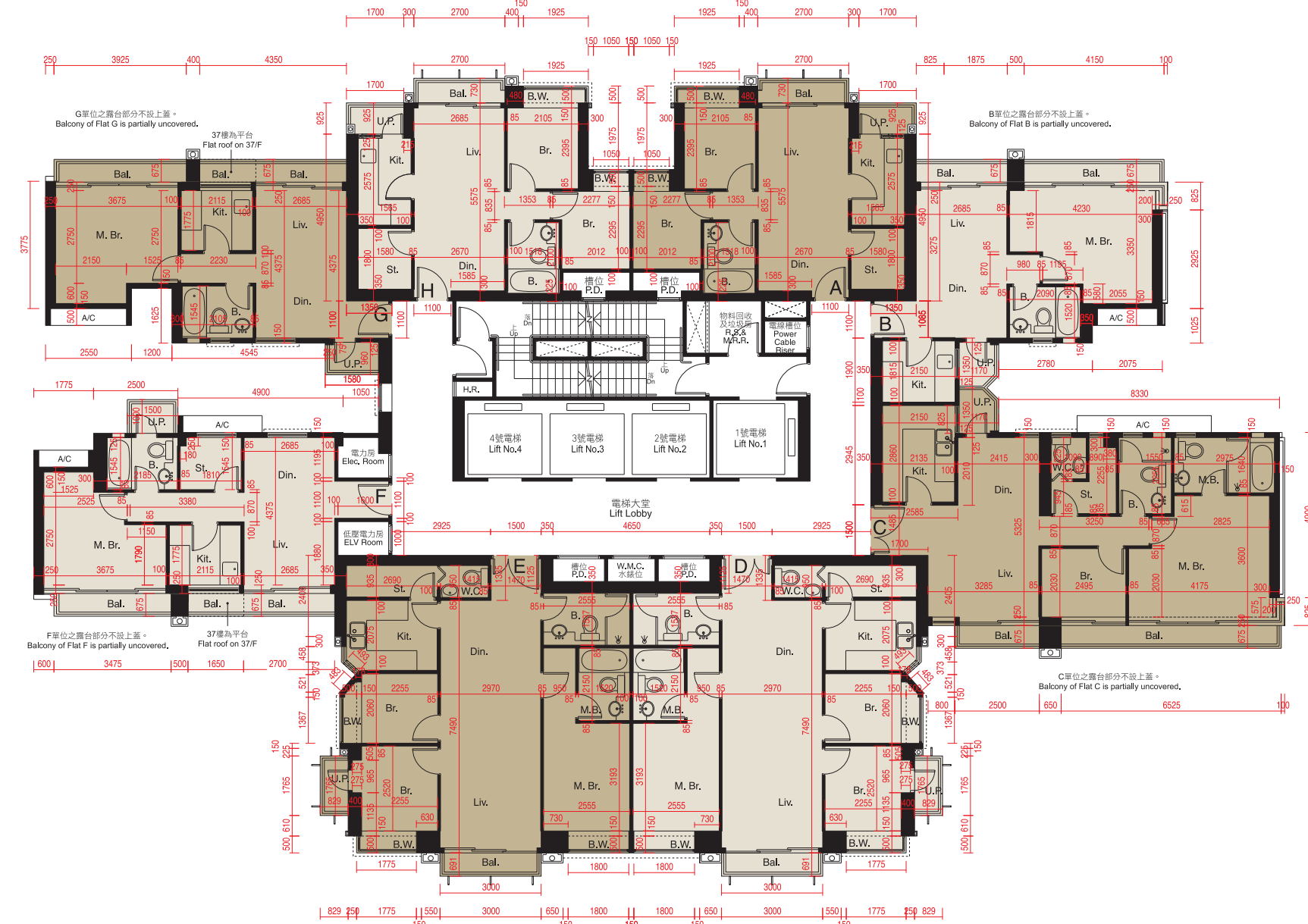
每個住宅物業 Each Residential Property	單位 Unit 樓層 Floor	A	B	C	D	E	F	G	H
層與層之間的高度 Floor to Floor Height (毫米 mm)	22/F	3150	3150	2800, 3150	2950, 3150	2950, 3150	3150	3150	3150
樓板(不包括灰泥)的厚度 Thickness of Floor Slab (excluding plaster) (毫米 mm)	22/F	150, 200	150, 200	150, 175, 200	150, 200	150, 200	150, 200	150, 200	150, 200

每個住宅物業 Each Residential Property	單位 Unit 樓層 Floor	A	B	C	D	E	F	G	H
層與層之間的高度 Floor to Floor Height (毫米 mm)	25/F - 27/F, 31/F - 33/F & 35/F	3150	3150	3150	3150	3150	3150	3150	3150
	28/F & 36/F	3150	2950, 3150	2950, 3150	3150	3150	2900, 2950, 3150	2900, 2950, 3150	3150
樓板(不包括灰泥)的厚度 Thickness of Floor Slab (excluding plaster) (毫米 mm)	25/F - 27/F, 31/F - 33/F & 35/F	150, 200	150, 200	150, 175, 200	150, 200	150, 200	150, 200	150, 200	150, 200
	28/F & 36/F	150, 200	150, 200	150, 175, 200	150, 200	150, 200	150, 200	150, 200	150, 200

10. 期數的住宅物業的樓面平面圖

FLOOR PLANS OF RESIDENTIAL PROPERTIES IN THE PHASE

29樓及37樓平面圖 29TH & 37TH FLOOR PLAN



比例尺SCALE: 0米(M) 5米(M)

因住宅物業的較高樓層的結構牆的厚度遞減，較高樓層的內部面積，一般比較低樓層的內部面積稍大。

請參閱本售樓說明書第31頁為住宅物業樓面平面圖而設之備註及名詞及簡稱的圖例。

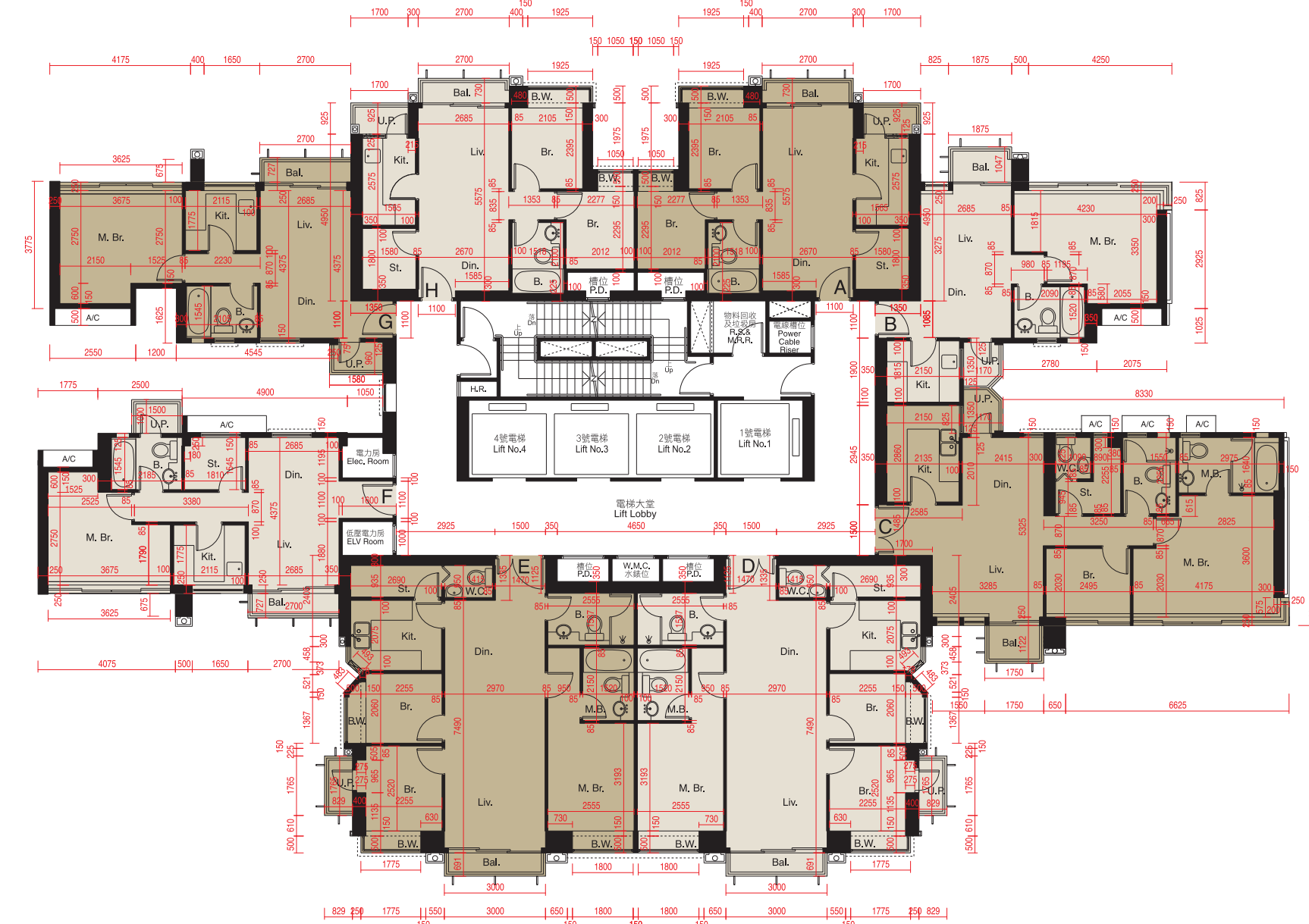
The internal areas of the residential properties on the upper floors will generally be slightly larger than those on the lower floors because of the reducing thickness of the structural walls on the upper floors.

Please refer to page 31 of this sales brochure for the remarks and legends of the terms and abbreviations for the floor plans of residential properties.

備註：平面圖所列數字為以毫米標示之建築結構尺寸。
Note: The dimensions of floor plans are all structural dimensions in millimeter.

BLOCK 1座

30樓及38樓平面圖 30TH & 38TH FLOOR PLAN



比例尺SCALE: 0米(M) 5米(M)

因住宅物業的較高樓層的結構牆的厚度遞減，較高樓層的內部面積，一般比較低樓層的內部面積稍大。

請參閱本售樓說明書第31頁為住宅物業樓面平面圖而設之備註及名詞及簡稱的圖例。

The internal areas of the residential properties on the upper floors will generally be slightly larger than those on the lower floors because of the reducing thickness of the structural walls on the upper floors.

Please refer to page 31 of this sales brochure for the remarks and legends of the terms and abbreviations for the floor plans of residential properties.

包括1000毫米厚之結構轉換層。
^ 包括1300毫米厚之結構轉換層及混凝土填充層。

Including 1000mm thick transfer plate.
^ Including 1300mm thick transfer plate and mass concrete fill.

備註：平面圖所列數字為以毫米標示之建築結構尺寸。
Note: The dimensions of floor plans are all structural dimensions in millimeter.

每個住宅物業 Each Residential Property	樓層 Floor	單位 Unit	A	B	C	D	E	F	G	H
層與層之間的高度 Floor to Floor Height (毫米 mm)	29/F & 37/F		3150	3150	3150	3150	3150	3150	3150	3150
樓板(不包括灰泥)的厚度 Thickness of Floor Slab (excluding plaster) (毫米 mm)	29/F & 37/F		150, 200	150, 200	150, 175, 200	150, 200	150, 200	150, 200	150, 200	150, 200

每個住宅物業 Each Residential Property	樓層 Floor	單位 Unit	A	B	C	D	E	F	G	H
層與層之間的高度 Floor to Floor Height (毫米 mm)	30/F		3150	3150	2800, 3150	2950, 3150	2950, 3150	3150	3150	3150
	38/F		3300, 3900#, 4200#	3500, 3900#, 4200#	3500, 3900#, 4200#	3300, 3900#, 4200#	3300, 3900#, 4200#	3500, 3900#, 4200#	3500, 3900#, 4200#	3300, 3900#, 4200#
樓板(不包括灰泥)的厚度 Thickness of Floor Slab (excluding plaster) (毫米 mm)	30/F		150, 200	150, 200	150, 175, 200	150, 200	150, 200	150, 200	150, 200	150, 200
	38/F		200, 1000, 1300	150, 200, 250, 1000, 1300	150, 200, 250, 1000, 1300	200, 1000, 1300	200, 1000, 1300	150, 200, 250, 1000, 1300	150, 200, 250, 1000, 1300	200, 1000, 1300

10. 期數的住宅物業的樓面平面圖

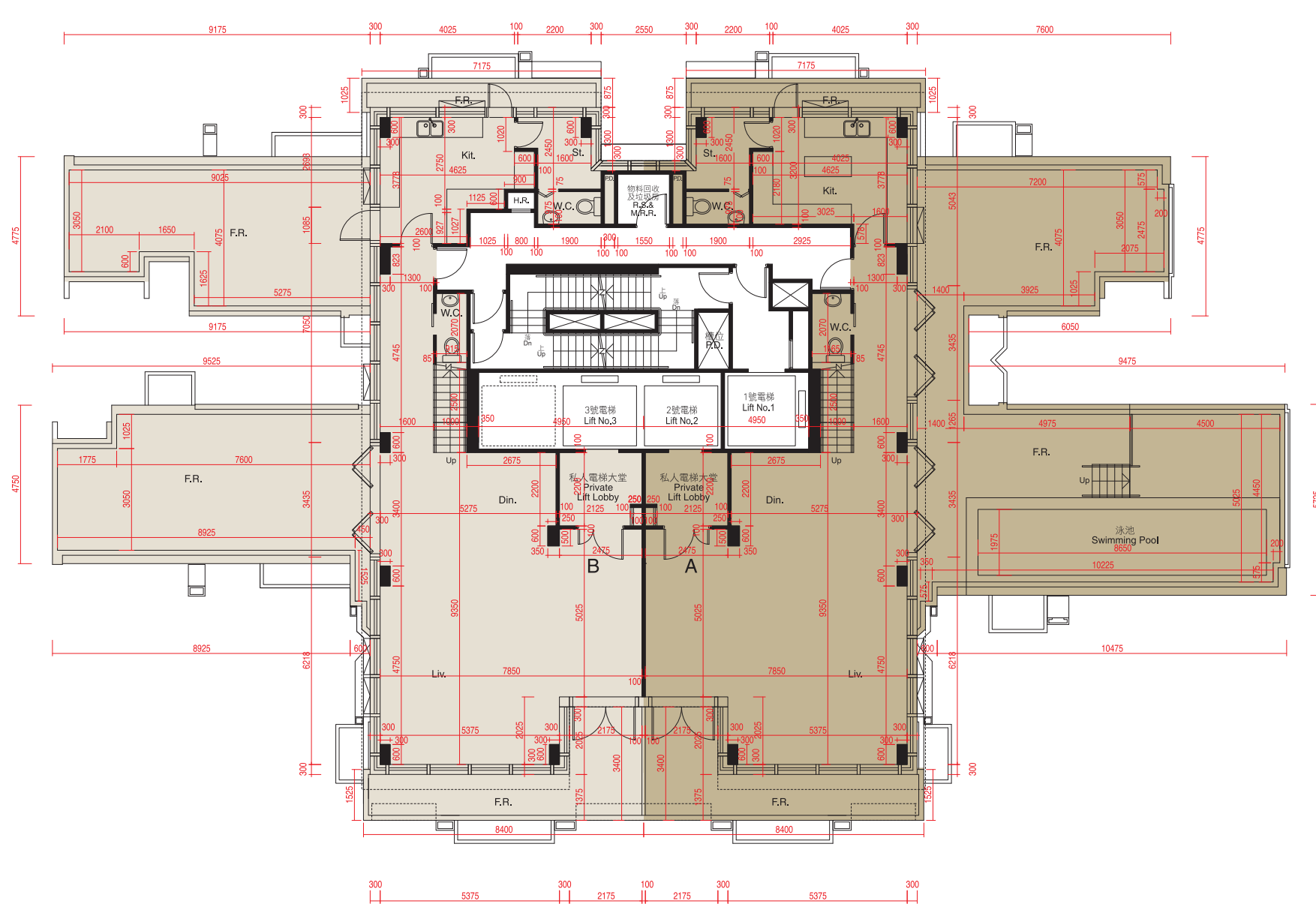
FLOOR PLANS OF RESIDENTIAL PROPERTIES IN THE PHASE

BLOCK 1 座

BLOCK 1 座

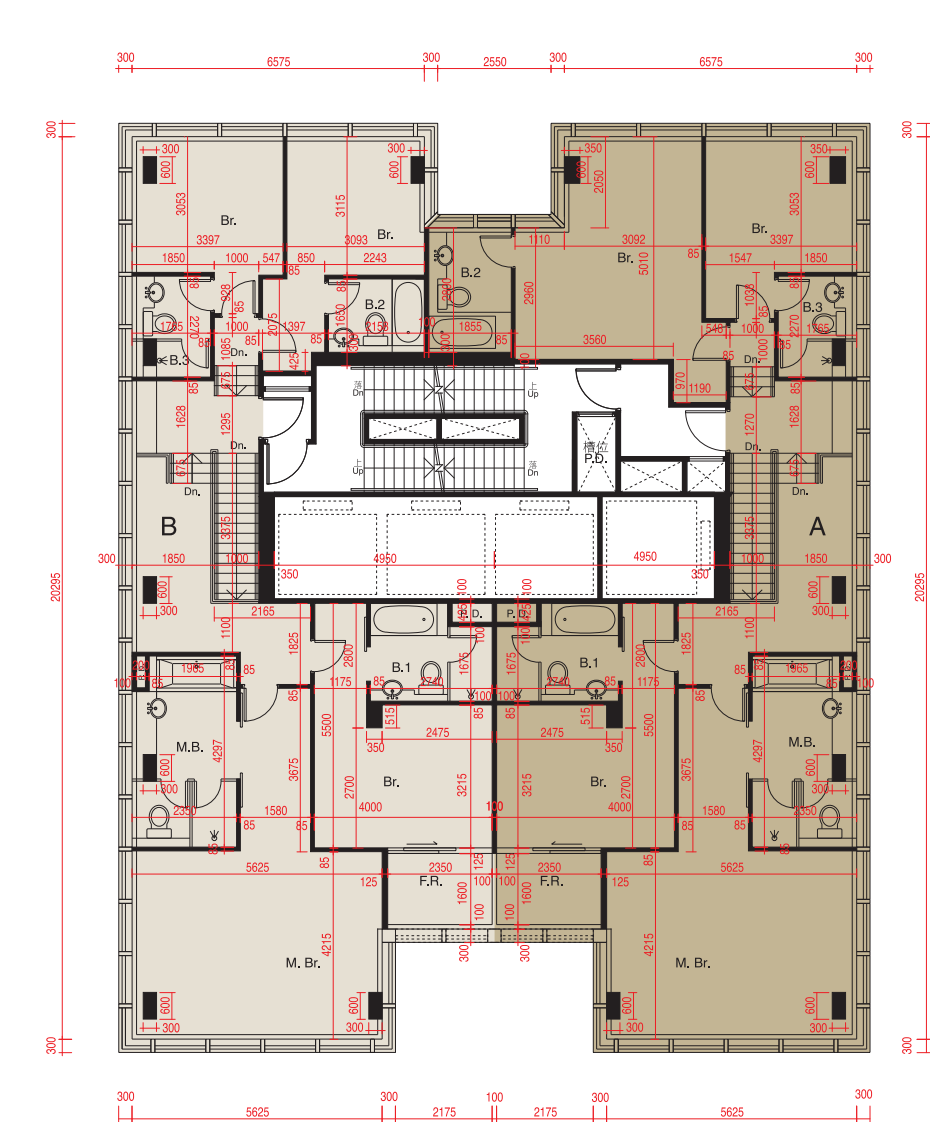
39樓平面圖 (複式低層) 39TH FLOOR PLAN (LOWER DUPLEX)

40樓平面圖 (複式高層) 40TH FLOOR PLAN (UPPER DUPLEX)



比例尺SCALE: 0米(M) 5米(M)

備註：平面圖所列數字為以毫米標示之建築結構尺寸。
Note: The dimensions of floor plans are all structural dimensions in millimeter.



比例尺SCALE: 0米(M) 5米(M)

備註：平面圖所列數字為以毫米標示之建築結構尺寸。
Note: The dimensions of floor plans are all structural dimensions in millimeter.

因住宅物業的較高樓層的結構牆的厚度遞減，較高樓層的內部面積，一般比較低樓層的內部面積稍大。請參閱本售樓說明書第31頁為住宅物業樓面平面圖而設之備註及名詞及簡稱的圖例。

The internal areas of the residential properties on the upper floors will generally be slightly larger than those on the lower floors because of the reducing thickness of the structural walls on the upper floors.

Please refer to page 31 of this sales brochure for the remarks and legends of the terms and abbreviations for the floor plans of residential properties.

每個住宅物業 Each Residential Property	單位 Unit 樓層 Floor	A	B
層與層之間的高度 Floor to Floor Height (毫米 mm)	39/F	2800, 3340, 3500	2800, 3340, 3500
樓板(不包括灰泥)的厚度 Thickness of Floor Slab (excluding plaster) (毫米 mm)	39/F	140, 300	140, 300

因住宅物業的較高樓層的結構牆的厚度遞減，較高樓層的內部面積，一般比較低樓層的內部面積稍大。請參閱本售樓說明書第31頁為住宅物業樓面平面圖而設之備註及名詞及簡稱的圖例。

The internal areas of the residential properties on the upper floors will generally be slightly larger than those on the lower floors because of the reducing thickness of the structural walls on the upper floors.

Please refer to page 31 of this sales brochure for the remarks and legends of the terms and abbreviations for the floor plans of residential properties.

每個住宅物業 Each Residential Property	單位 Unit 樓層 Floor	A	B
層與層之間的高度 Floor to Floor Height (毫米 mm)	40/F	3250, 3500	3250, 3500
樓板(不包括灰泥)的厚度 Thickness of Floor Slab (excluding plaster) (毫米 mm)	40/F	150, 200	150, 200

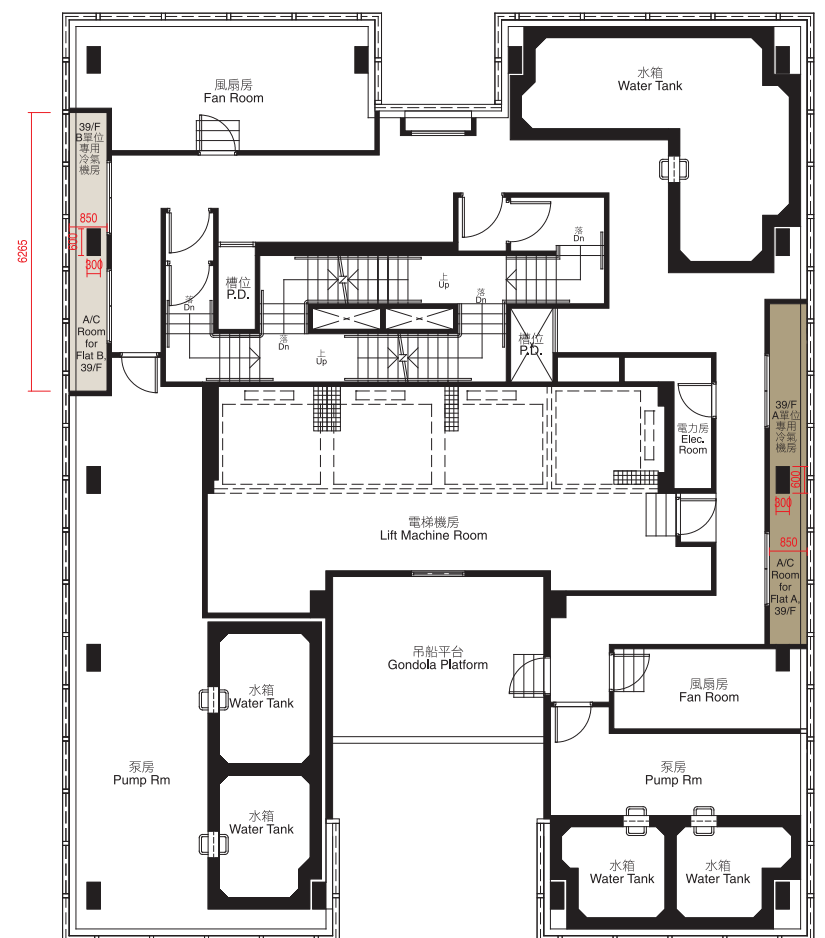
10. 期數的住宅物業的樓面平面圖

FLOOR PLANS OF RESIDENTIAL PROPERTIES IN THE PHASE

機電層平面圖 ELECTRICAL & MECHANICAL FLOOR PLAN

BLOCK 1 座

BLOCK 1 座



住宅物業平面圖的名詞及簡稱的圖例

LEGENDS OF THE TERMS AND ABBREVIATION FOR THE FLOOR PLANS OF RESIDENTIAL PROPERTIES

A/C	= 冷氣機平台 Air-conditioning platform	Liv.	= 客廳 Living room
B.	= 浴室 Bathroom	M.B.	= 主人房浴室 Master bathroom
Bal.	= 露台 Balcony	M.Br.	= 主人房 Master bedroom
Br.	= 睡房 Bedroom	P.D.	= 管道槽位 Pipe duct
B.W.	= 窗台 Bay window	R.S. & M.R.R.	= 垃圾及物料回收房 Refuse storage & material recovery room
Din.	= 飯廳 Dining room	St.	= 儲物間 Store
Dn.	= 落 Down	Switch Rm	= 電掣房 Switch room
Elec. Room	= 電力房 Electricity room	T.B.E. Room	= 電話機房 Telecommunications & broadcasting room
ELV Duct	= 超低壓電線槽位 Extra-low voltage electricity duct	U.P.	= 工作平台 Utility platform
ELV Room	= 超低壓電力房 Extra-low voltage electricity room	W.C.	= 廁所 Washing chamber
F.R.	= 平台 Flat roof	W.I.C.	= 衣帽間 Walk in closet
H.R.	= 喉轆 Hose reel	W.M.C.	= 水錶位 Water meter cabinet
Kit.	= 廚房 Kitchen		

住宅物業的平面圖的備註：

1. 部分住宅單位的露台、工作平台、平台或外牆或設有外露之公用喉管，或外牆裝飾板內藏之公用喉管。
2. 部分住宅單位內之部分天花或有跌級樓板，用以安裝上層之機電設備或配合上層之結構、建築設計及/或裝修設計上的需要。
3. 部分住宅單位內或設有假陣或假天花用以安裝冷氣喉管及/或其他機電設備。

Remarks for the Floor Plans of Residential Properties:

1. Common pipes exposed or enclosed in cladding may be located at the balcony, utility platform, flat roof or external wall of some residential units.
2. There may be sunken slabs at some parts of the ceiling inside some residential units for the installation of mechanical and electrical services of the floor above or due to the structural, architectural and/or decoration design requirements of the floor above.
3. There may be ceiling bulkheads or false ceiling inside some residential units for the installation of air-conditioning conduits and/or other mechanical and electrical services.

每個住宅單位的層與層之間的高度：不適用。
 每個住宅單位的樓板（不包括灰泥）的厚度：不適用。
 因住宅物業的較高樓層的結構牆的厚度遞減，較高樓層的內部面積，一般比較低樓層的內部面積稍大。
 請參閱本售樓說明書第31頁為住宅物業樓面平面圖而設之備註及名詞及簡稱的圖例。

The floor-to-floor height of each residential property : Not applicable.

The thickness of the floor slabs (excluding plaster) of each residential property : Not applicable.

The internal areas of the residential properties on the upper floors will generally be slightly larger than those on the lower floors because of the reducing thickness of the structural walls on the upper floors.

Please refer to page 31 of this sales brochure for the remarks and legends of the terms and abbreviations for the floor plans of residential properties.

比例尺SCALE: 0米(M) 5米(M)

備註：平面圖所列數字為以毫米標示之建築結構尺寸。
 Note : The dimensions of floor plans are all structural dimensions in millimeter.