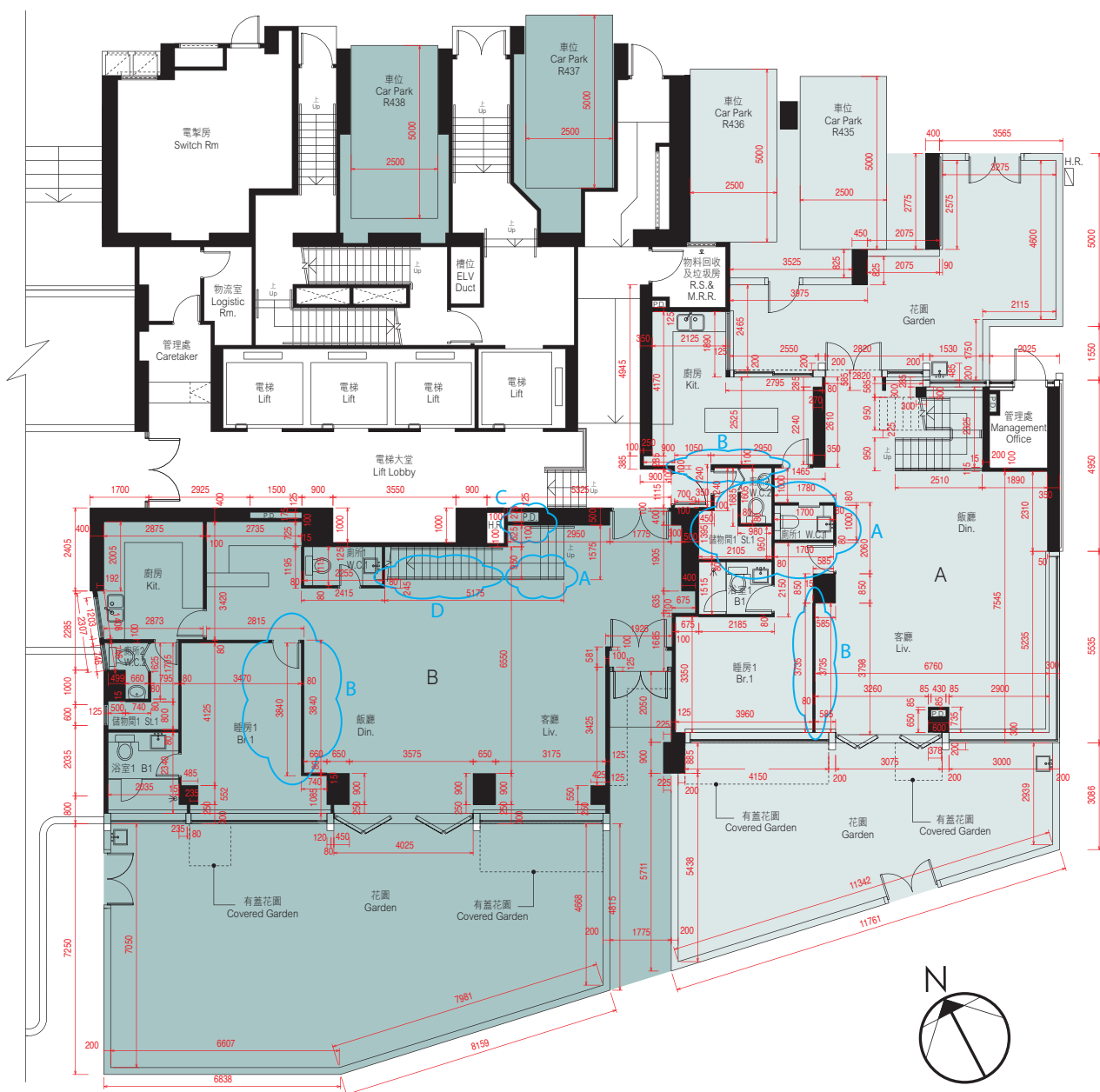


10. 期數的住宅物業的樓面平面圖 FLOOR PLANS OF RESIDENTIAL PROPERTIES IN THE PHASE

第6座地下平面圖 (複式低層) BLOCK 6 — GROUND FLOOR PLAN (LOWER DUPLEX)



第6座地下及1樓A單位及B單位在發展項目落成後進行小型工程或獲《建築物條例》豁免的工程而有所改動。該等改動的大概位置已於本樓面平面圖中作標示。

Flat A and Flat B, G/F & 1/F of Block 6 have been altered by way of minor works or exempted works under the Buildings Ordinance after completion of the Development. The approximate locations of alteration are indicated on this floor plan.

第6座地下及1樓A單位的改動工程包括：

- (A) 原廁所1、廁所2及儲物間1的間隔牆被移除並以不同尺寸的間隔牆整合成廁所及儲物間。
- (B) 原間隔牆被移除並以不同尺寸的間隔牆取代。

Alteration works for Flat A, G/F & 1/F of Block 6 include :

- (A) Original partition walls of washing chamber 1, washing chamber 2 and store 1 were demolished and integrated into a washing chamber and a store by partition walls in different dimensions.
- (B) Original partition wall was demolished and replaced by partition wall with different dimension.

第6座地下及1樓B單位的改動工程包括：

- (A) 部分樓梯加闊。
- (B) 原睡房1的間隔牆被移除並以不同尺寸的玻璃間隔牆及趟門取代。
- (C) 新增間隔牆。
- (D) 原樓梯之扶手被移除。於樓梯間下面位置新增間隔牆並改動成為儲物間3。

Alteration works for Flat B, G/F & 1/F of Block 6 include :

- (A) Some of the stairs were widened.
- (B) Original partition walls of the bedroom 1 were demolished and replaced by glass partition walls and sliding door with different dimensions.
- (C) Partition walls were added.
- (D) Original railing of the staircase was demolished. Store 3 was added by addition of partition walls underneath the staircase.

比例尺 SCALE: 0米(M) 5米(M)

備註 Note :

1. 平面圖所列數字為以毫米標示之建築結構尺寸。
 2. 以平方呎顯示之面積均依據1平方米=10.764平方呎換算，並四捨五入至整數。
1. The dimensions of floor plans are all structural dimensions in millimeter.
2. Areas in square feet are converted at a rate of 1 square metre to 10.764 square feet and rounded to the nearest integer.

註釋 Explanatory Note :

貼鄰住客停車位的面積(不計算入停車位面積或實用面積)：地下A單位為9.301平方米(100平方呎)，地下B單位為6.763平方米(73平方呎)。

由工作平台或露台遮蓋之花園面積(已計算入花園面積)：地下A單位為6.418平方米(69平方呎)，地下B單位為6.416平方米(69平方呎)。根據屋宇署規定，該面積最少兩邊不可圍封。

Area adjoining residential parking space (not included in the area of parking space or saleable area): Flat A on G/F is 9.301 sq.m. (100 sq.ft.), Flat B on G/F is 6.763 sq.m. (73 sq.ft.).

Area of garden covered by utility platform or balcony (included in the area of garden): Flat A on G/F is 6.418 sq.m. (69 sq.ft.), Flat B on G/F is 6.416 sq.m. (69 sq.ft.). Such areas shall be unenclosed on at least 2 sides as required by Buildings Department.

每個住宅物業 Each Residential Property	單位 Unit		
	樓層 Floor	A	B
層與層之間的高度 Floor to Floor Height (毫米 mm)	G/F	3250, 3500	3500
樓板(不包括灰泥)的厚度 Thickness of Floor Slab (excluding plaster) (毫米 mm)	G/F	150, 175, 200, 250	150, 200, 300

第6座1樓平面圖 (複式高層) BLOCK 6 — 1/F FLOOR PLAN (UPPER DUPLEX)



第6座地下及1樓B單位在發展項目落成後進行小型工程或獲《建築物條例》豁免的工程而有所改動。該等改動的大概位置已於本樓面平面圖中作標示。

Flat B, G/F & 1/F of Block 6 has been altered by way of minor works or exempted works under the Buildings Ordinance after completion of the Development. The approximate locations of alteration are indicated on this floor plan.

第6座地下及1樓B單位的改動工程包括:

(E) 原樓梯之扶手被移除。

Alteration works for Flat B, G/F & 1/F of Block 6 include :

(E) Original railing of the staircase was demolished.



比例尺 SCALE: 0米(M) 5米(M)

備註：平面圖所列數字為以毫米標示之建築結構尺寸。
Note: The dimensions of floor plans are all structural dimensions in millimeter.

因住宅物業的較高樓層的結構牆的厚度遞減，較高樓層的內部面積，一般比較低樓層的內部面積稍大。請參閱本售樓說明書第24頁為住宅物業樓面平面圖而設之備註及名詞及簡稱的圖例。

The internal areas of the residential properties on the upper floors will generally be slightly larger than those on the lower floors because of the reducing thickness of the structural walls on the upper floors.

Please refer to page 24 of this sales brochure for the remarks and legends of the terms and abbreviations for the floor plans of residential properties.

每個住宅物業 Each Residential Property	單位 Unit		
	樓層 Floor	A	B
層與層之間的高度 Floor to Floor Height (毫米 mm)	1/F	3250	3250
樓板 (不包括灰泥) 的厚度 Thickness of Floor (excluding plaster) (毫米 mm)	1/F	150, 200, 225, 250	150, 200, 275, 300



10. 期數的住宅物業的樓面平面圖 FLOOR PLANS OF RESIDENTIAL PROPERTIES IN THE PHASE

第6座地下 (複式低層) A單位及B單位之現狀間隔平面圖 AS IS FLOOR PLAN FOR THE GROUND FLOOR (LOWER DUPLEX) OF FLATS A & B, BLOCK 6



比例尺 SCALE: 0米(M) 5米(M)

- 備註 Note:
1. 平面圖所列數字為以毫米標示之建築結構尺寸。
 2. 以平方呎顯示之面積均依據1平方米=10.764平方呎換算，並四捨五入至整數。
1. The dimensions of floor plans are all structural dimensions in millimeter.
2. Areas in square feet are converted at a rate of 1 square metre to 10.764 square feet and rounded to the nearest integer.

註釋 Explanatory Note:

貼鄰住客停車位的面積(不計算入停車位面積或實用面積): 地下A單位為9.301平方米(100平方呎), 地下B單位為6.763平方米(73平方呎)。

由工作平台或露台遮蓋之花園面積(已計算入花園面積): 地下A單位為6.418平方米(69平方呎), 地下B單位為6.416平方米(69平方呎)。根據屋宇署規定, 該面積最少兩邊不可圍封。

Area adjoining residential parking space (not included in the area of parking space or saleable area): Flat A on G/F is 9.301 sq.m. (100 sq.ft.), Flat B on G/F is 6.763 sq.m. (73 sq.ft.).

Area of garden covered by utility platform or balcony (included in the area of garden): Flat A on G/F is 6.418 sq.m. (69 sq.ft.), Flat B on G/F is 6.416 sq.m. (69 sq.ft.). Such areas shall be unenclosed on at least 2 sides as required by Buildings Department.

每個住宅物業 Each Residential Property	單位 Unit		
	A	B	
層與層之間的高度 Floor to Floor Height (毫米 mm)	G/F	3250, 3500	3500
樓板(不包括灰泥)的厚度 Thickness of Floor Slab (excluding plaster) (毫米 mm)	G/F	150, 175, 200, 250	150, 200, 300

第6座1樓 (複式高層) A單位及B單位之現狀間隔平面圖 AS IS FLOOR PLAN FOR THE FIRST FLOOR (UPPER DUPLEX) OF FLATS A & B, BLOCK 6



比例尺 SCALE: 0米(M) 5米(M)

備註：平面圖所列數字為以毫米標示之建築結構尺寸。
Note: The dimensions of floor plans are all structural dimensions in millimeter.

因住宅物業的較高樓層的結構牆的厚度遞減，較高樓層的內部面積，一般比較低樓層的內部面積稍大。
請參閱本售樓說明書第24頁為住宅物業樓面平面圖而設之備註及名詞及簡稱的圖例。

The internal areas of the residential properties on the upper floors will generally be slightly larger than those on the lower floors because of the reducing thickness of the structural walls on the upper floors.
Please refer to page 24 of this sales brochure for the remarks and legends of the terms and abbreviations for the floor plans of residential properties.

每個住宅物業 Each Residential Property	單位 Unit		
	樓層 Floor	A	B
層與層之間的高度 Floor to Floor Height (毫米 mm)	1/F	3250	3250
樓板 (不包括灰泥) 的厚度 Thickness of Floor (excluding plaster) (毫米 mm)	1/F	150, 200, 225, 250	150, 200, 275, 300

10. 期數的住宅物業的樓面平面圖 FLOOR PLANS OF RESIDENTIAL PROPERTIES IN THE PHASE

第6座3樓平面圖 BLOCK 6 — 3/F FLOOR PLAN



比例尺SCALE: 0米(M) 5米(M)

因住宅物業的較高樓層的結構牆的厚度遞減，較高樓層的內部面積，一般比較低樓層的內部面積稍大。
請參閱本售樓說明書第24頁為住宅物業樓面平面圖而設之備註及名詞及簡稱的圖例。

The internal areas of the residential properties on the upper floors will generally be slightly larger than those on the lower floors because of the reducing thickness of the structural walls on the upper floors.

Please refer to page 24 of this sales brochure for the remarks and legends of the terms and abbreviations for the floor plans of residential properties.

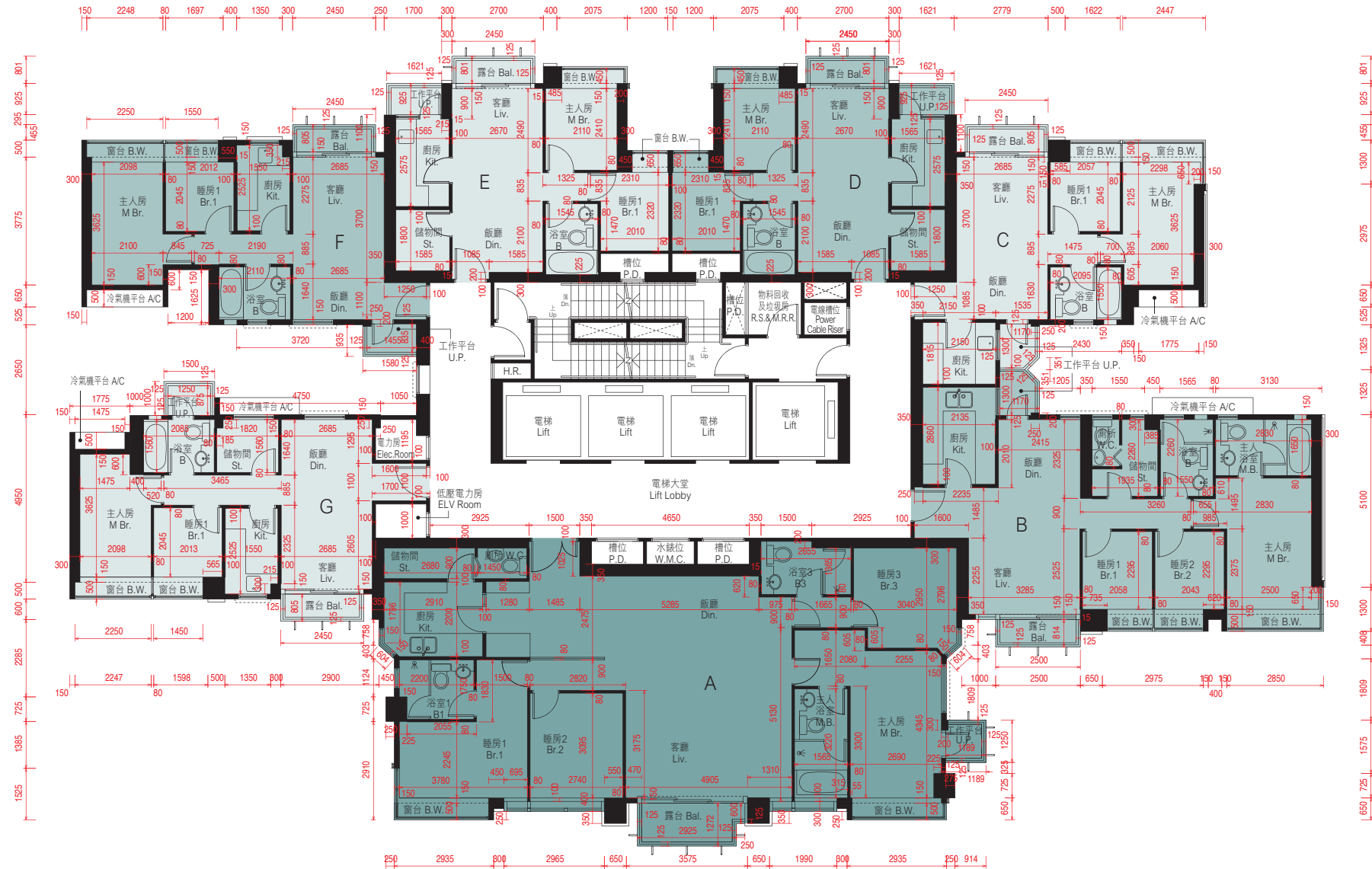
平台空白位置為供維修大廈設備使用的公用地方。

Blank areas on the flat roof are common areas for building facility maintenance.

備註：平面圖所列數字為以毫米標示之建築結構尺寸。
Note: The dimensions of floor plans are all structural dimensions in millimeter.

每個住宅物業 Each Residential Property	樓層 Floor	單位 Unit	A	B	C	D	E	F	G
層與層之間的高度 Floor to Floor Height (毫米 mm)	3/F		3150	3150	3150	3150	3150	3150	3150
樓板(不包括灰泥)的厚度 Thickness of Floor (excluding plaster) (毫米 mm)	3/F		200, 250	150, 175, 200	150, 200	150, 200	150, 200	150, 200	150, 200

第6座5樓 - 7樓, 10樓 - 12樓, 15樓, 18樓 - 21樓及25樓 - 28樓平面圖
 BLOCK 6 — 5/F - 7/F, 10/F - 12/F, 15/F, 18/F - 21/F & 25/F - 28/F FLOOR PLAN



比例尺SCALE: 0米(M) 5米(M)

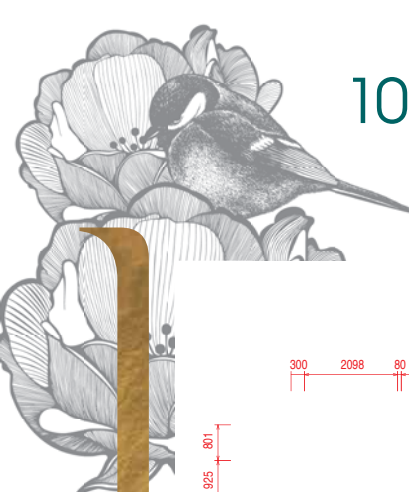
因住宅物業的較高樓層的結構牆的厚度遞減，較高樓層的內部面積，一般比較低樓層的內部面積稍大。
 請參閱本售樓說明書第24頁為住宅物業樓面平面圖而設之備註及名詞及簡稱的圖例。

The internal areas of the residential properties on the upper floors will generally be slightly larger than those on the lower floors because of the reducing thickness of the structural walls on the upper floors.

Please refer to page 24 of this sales brochure for the remarks and legends of the terms and abbreviations for the floor plans of residential properties.

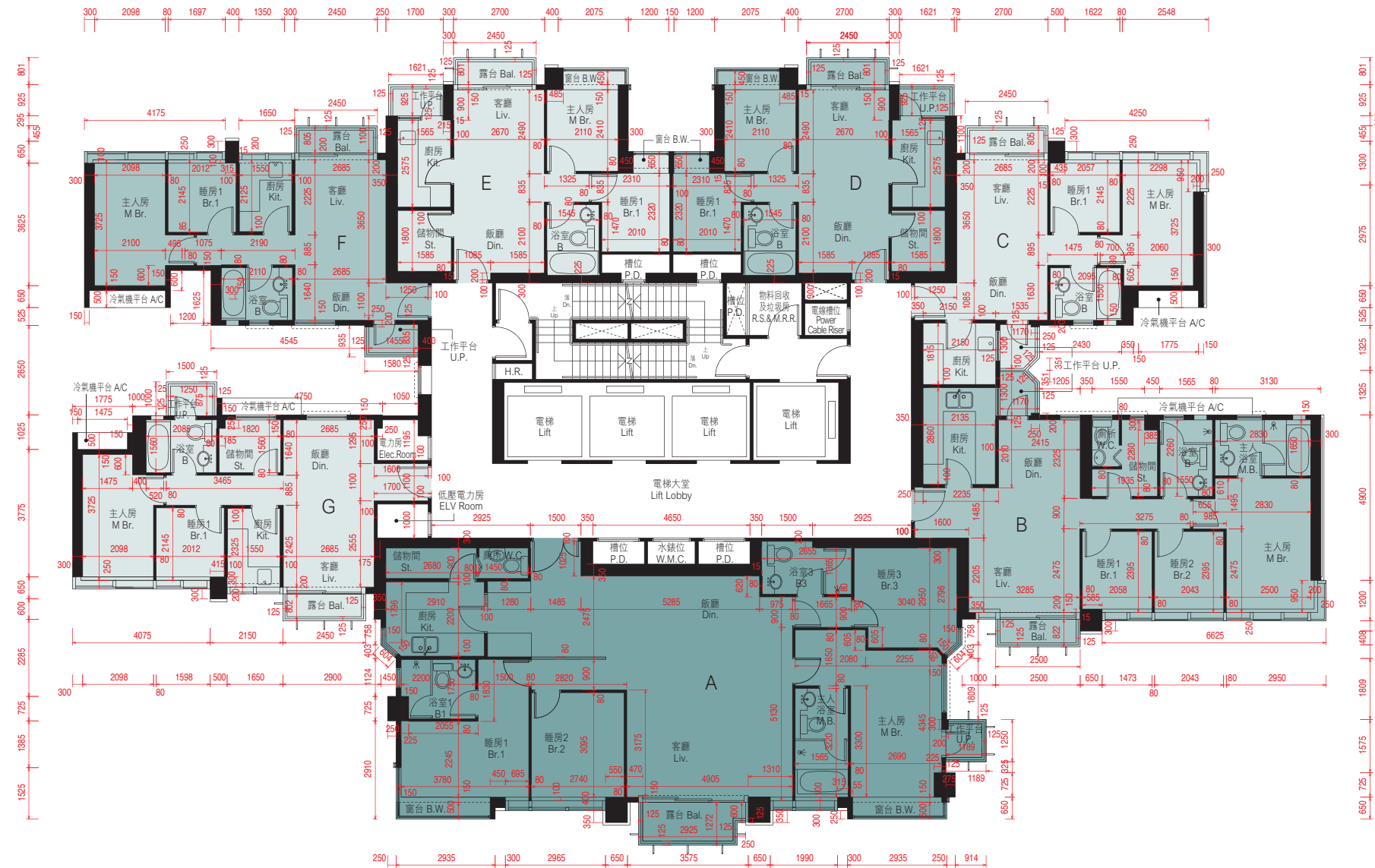
備註：平面圖所列數字為以毫米標示之建築結構尺寸。
 Note: The dimensions of floor plans are all structural dimensions in millimeter.

每個住宅物業 Each Residential Property	樓層 Floor	單位 Unit	A	B	C	D	E	F	G
層與層之間的高度 Floor to Floor Height (毫米 mm)	5/F - 6/F, 10/F - 12/F, 18/F - 20/F & 25/F - 27/F		3150	3150	3150	3150	3150	3150	3150
	7/F, 15/F, 21/F & 28/F		2800, 3150	3150	3150	3150	3150	3150	2900, 3150
樓板(不包括灰泥)的厚度 Thickness of Floor (excluding plaster) (毫米 mm)	5/F - 7/F, 10/F - 12/F, 15/F, 18/F - 21/F & 25/F - 28/F		200, 250	150, 175, 200	125, 150, 200, 325	150, 200	150, 200	150, 200	150, 200



10. 期數的住宅物業的樓面平面圖 FLOOR PLANS OF RESIDENTIAL PROPERTIES IN THE PHASE

第6座8樓, 9樓, 16樓, 17樓, 22樓及23樓平面圖 BLOCK 6 — 8/F, 9/F, 16/F, 17/F, 22/F & 23/F FLOOR PLAN



比例尺 SCALE: 0米(M) 5米(M)

因住宅物業的較高樓層的結構牆的厚度遞減，較高樓層的內部面積，一般比較低樓層的內部面積稍大。
請參閱本售樓說明書第24頁為住宅物業樓面平面圖而設之備註及名詞及簡稱的圖例。

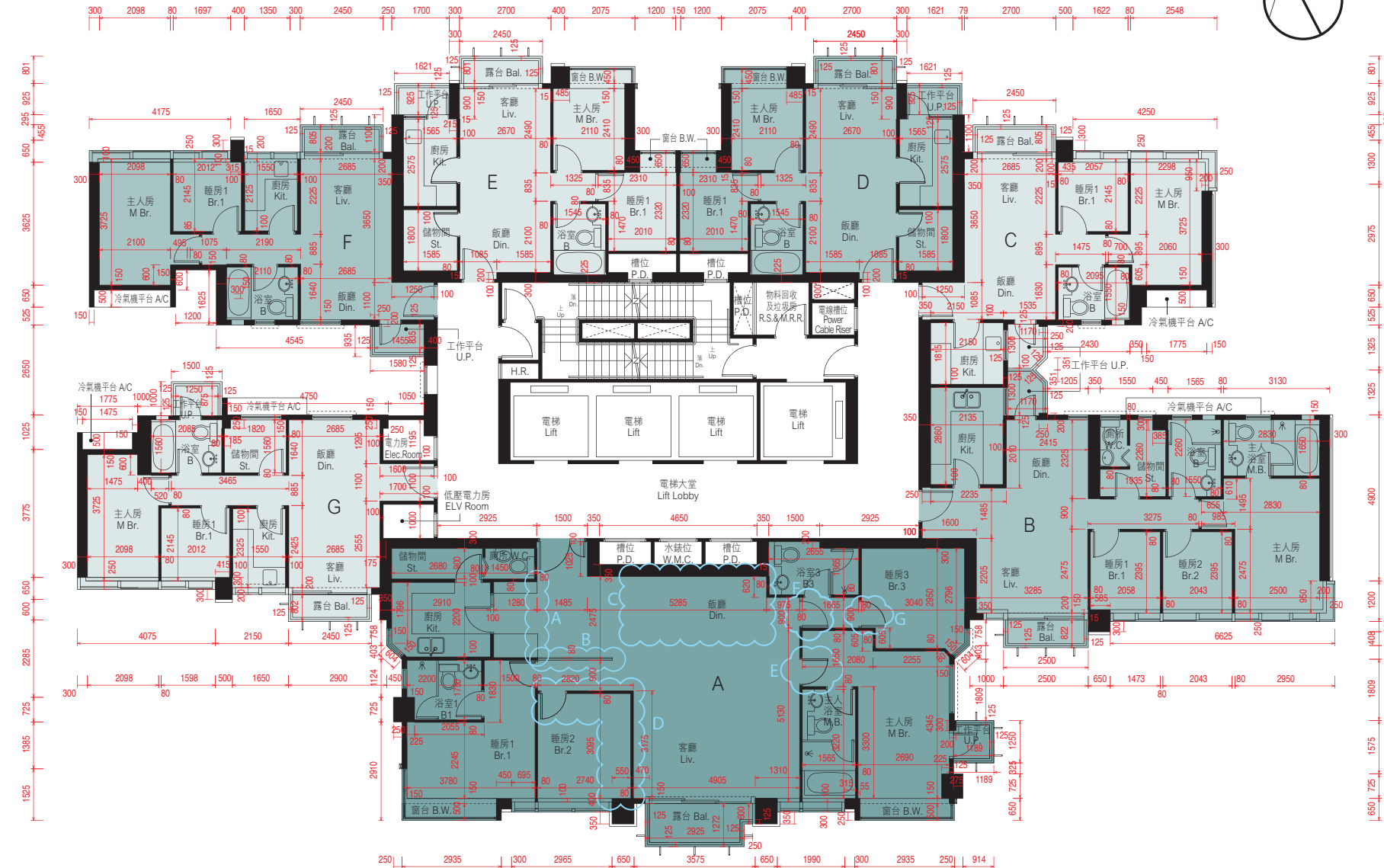
The internal areas of the residential properties on the upper floors will generally be slightly larger than those on the lower floors because of the reducing thickness of the structural walls on the upper floors.

Please refer to page 24 of this sales brochure for the remarks and legends of the terms and abbreviations for the floor plans of residential properties.

備註：平面圖所列數字為以毫米標示之建築結構尺寸。
Note: The dimensions of floor plans are all structural dimensions in millimeter.

每個住宅物業 Each Residential Property	樓層 Floor	單位 Unit						
		A	B	C	D	E	F	G
層與層之間的高度 Floor to Floor Height (毫米 mm)	8/F, 16/F & 22/F	2800, 3150	3150	3150	3150	3150	3150	2900, 3150
	9/F, 17/F & 23/F	2800, 3150	3150	3150	3150	2800, 3150	3150	3150
樓板(不包括灰泥)的厚度 Thickness of Floor (excluding plaster) (毫米 mm)	8/F, 16/F & 22/F	200, 250	150, 175, 200	150, 200	150, 200	150, 200	150, 200	150, 200
	9/F, 17/F & 23/F	200, 250	150, 175, 200	150, 200	150, 200	150, 200	150, 200	150, 200

第6座29樓平面圖 BLOCK 6 — 29/F FLOOR PLAN



第6座29樓A單位在發展項目落成後進行小型工程或獲《建築物條例》豁免的工程而有所改動。該等改動的大概位置已於本樓面平面圖中作標示。

Flat A, 29/F of Block 6 has been altered by way of minor works or exempted works under the Buildings Ordinance after completion of the Development. The approximate locations of alteration are indicated on this floor plan.

第6座29樓A單位的改動工程包括：

- (A) 新增趟門。
- (B) 原玻璃間隔被移除並以不同尺寸之金屬間隔取代。
- (C) 新增收納活動式金屬間隔及趟門並改動成為書房。
- (D) 原睡房2的間隔牆被移除並改動成為飯廳。
- (E) 改動原主人房門之開啟方向。
- (F) 改動原門之開啟方向。
- (G) 原睡房3之門被移位。

Alteration works for Flat A, 29/F of Block 6 include :

- (A) Sliding doors were added.
- (B) Original glass partition was demolished and replaced by metal partition in different dimension.
- (C) Study room was added by addition of sliding and stacking metal partition and sliding doors.
- (D) Original partition walls of bedroom 2 were demolished and altered as a dining room.
- (E) Swing direction of the original door of master bedroom was changed.
- (F) Swing direction of the original door was changed.
- (G) Original door of bedroom 3 was relocated.

比例尺 SCALE: 0米(M) 5米(M)

因住宅物業的較高樓層的結構牆的厚度遞減，較高樓層的內部面積，一般比較低樓層的內部面積稍大。

請參閱本售樓說明書第24頁為住宅物業樓面平面圖而設之備註及名詞及簡稱的圖例。

The internal areas of the residential properties on the upper floors will generally be slightly larger than those on the lower floors because of the reducing thickness of the structural walls on the upper floors.

Please refer to page 24 of this sales brochure for the remarks and legends of the terms and abbreviations for the floor plans of residential properties.

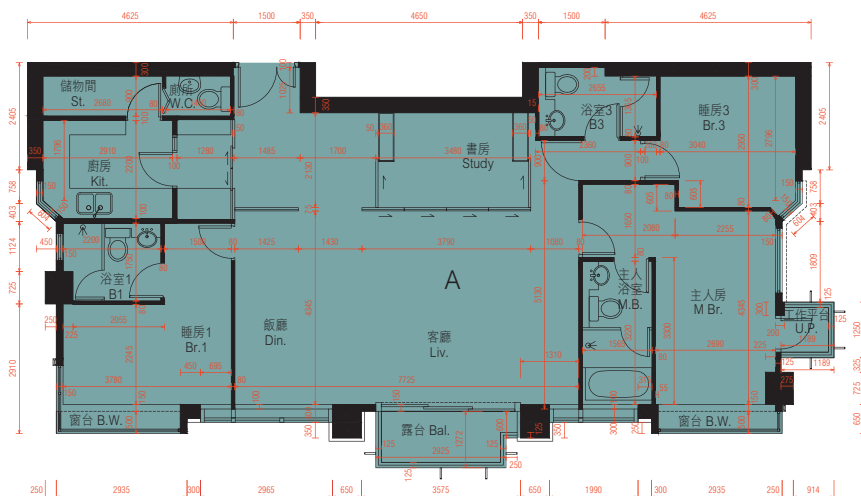
備註：平面圖所列數字為以毫米標示之建築結構尺寸。
Note: The dimensions of floor plans are all structural dimensions in millimeter.

每個住宅物業 Each Residential Property	單位 Unit 樓層 Floor	A	B	C	D	E	F	G
層與層之間的高度 Floor to Floor Height (毫米 mm)	29/F	2800, 3150	3150	3150	3150	3150	3150	2900, 3150
樓板(不包括灰泥)的厚度 Thickness of Floor (excluding plaster) (毫米 mm)	29/F	200, 250	150, 175, 200	150, 200	150, 200	150, 200	150, 200	150, 200



10. 期數的住宅物業的樓面平面圖 FLOOR PLANS OF RESIDENTIAL PROPERTIES IN THE PHASE

第6座29樓A單位之現狀間隔平面圖 AS IS FLOOR PLAN FOR FLAT A OF 29/F , BLOCK 6



比例尺 SCALE: 0米(M) 5米(M)

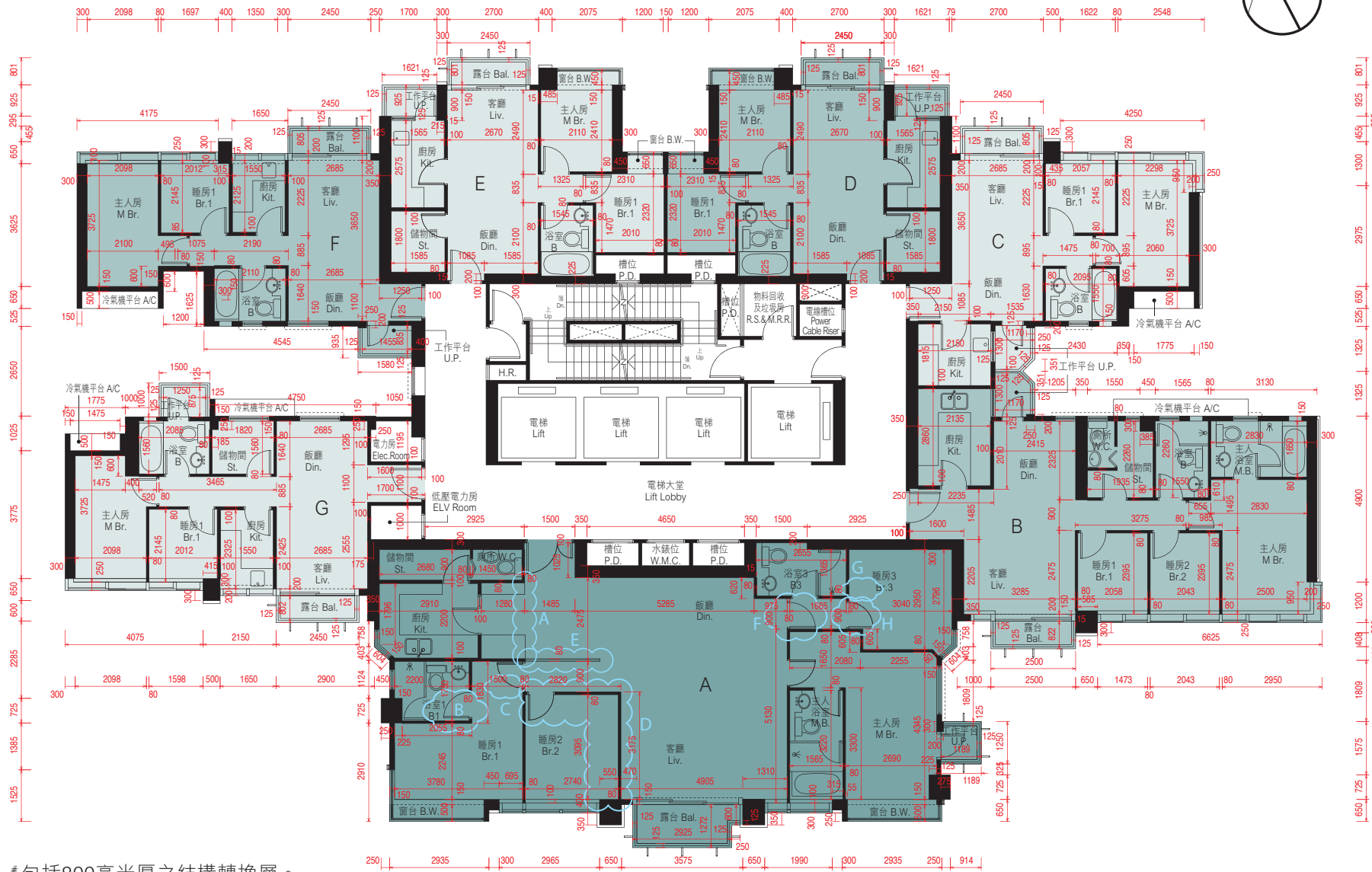
每個住宅物業 Each Residential Property	單位 Unit 樓層 Floor	A
層與層之間的高度 Floor to Floor Height (毫米 mm)	29/F	2800, 3150
樓板 (不包括灰泥) 的厚度 Thickness of Floor (excluding plaster) (毫米 mm)	29/F	200, 250

因住宅物業的較高樓層的結構牆的厚度遞減，較高樓層的內部面積，一般比較低樓層的內部面積稍大。
請參閱本售樓說明書第24頁為住宅物業樓面平面圖而設之備註及名詞及簡稱的圖例。

The internal areas of the residential properties on the upper floors will generally be slightly larger than those on the lower floors because of the reducing thickness of the structural walls on the upper floors.
Please refer to page 24 of this sales brochure for the remarks and legends of the terms and abbreviations for the floor plans of residential properties.

備註：平面圖所列數字為以毫米標示之建築結構尺寸。
Note: The dimensions of floor plans are all structural dimensions in millimeter.

第6座30樓平面圖 BLOCK 6 — 30/F FLOOR PLAN



包括800毫米厚之結構轉換層。
*包括1100毫米厚之結構轉換層及混凝土填充層。
Including 800mm thick transfer plate.
*Including 1100mm thick transfer plate and mass concrete fill.



第6座30樓A單位在發展項目落成後進行小型工程或獲《建築物條例》豁免的工程而有所改動。該等改動的大概位置已於本樓面平面圖中作標示。

Flat A, 30/F of Block 6 has been altered by way of minor works or exempted works under the Buildings Ordinance after completion of the Development. The approximate locations of alteration are indicated on this floor plan.

第6座30樓A單位的改動工程包括：

- (A) 新增間隔牆及趟門。
- (B) 原浴室1的間隔牆被移除並以不同尺寸的玻璃間隔牆及門取代。
- (C) 新增間隔牆。
- (D) 原睡房2的間隔牆被移除並以不同尺寸的玻璃間隔牆及趟門整合成書房。
- (E) 原玻璃間隔被移除。
- (F) 原門被移除。
- (G) 新增間隔牆。
- (H) 原睡房3的房門被移位。

Alteration works for Flat A, 30/F of Block 6 include :

- (A) Partition walls and sliding doors were added.
- (B) Original partition wall of bathroom 1 was demolished and replaced by glass partition wall and door with different dimensions.
- (C) Partition wall was added.
- (D) Original partition walls of bedroom 2 were demolished and altered as a study room by addition of glass partition walls and sliding door with different dimensions.
- (E) Original glass partition was demolished.
- (F) Original door was demolished.
- (G) Partition wall was added.
- (H) Original door of bedroom 3 was relocated.

因住宅物業的較高樓層的結構牆的厚度遞減，較高樓層的內部面積，一般比較低樓層的內部面積稍大。

請參閱本售樓說明書第24頁為住宅物業樓面平面圖而設之備註及名詞及簡稱的圖例。

The internal areas of the residential properties on the upper floors will generally be slightly larger than those on the lower floors because of the reducing thickness of the structural walls on the upper floors.

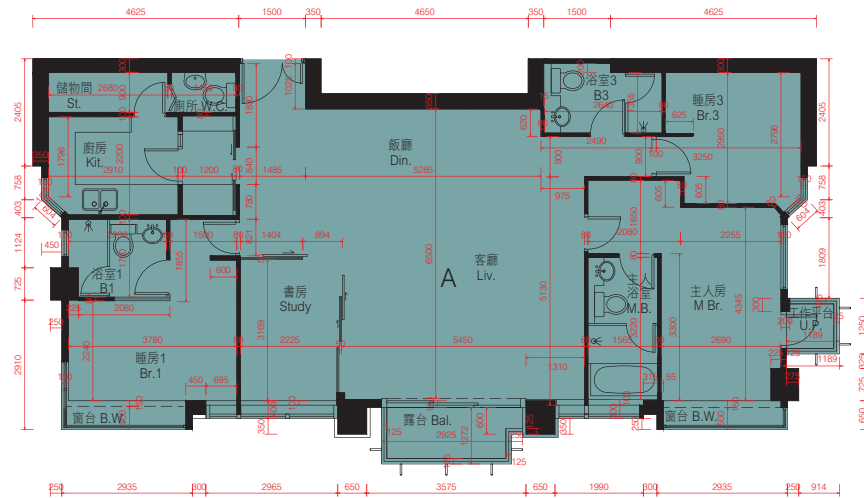
Please refer to page 24 of this sales brochure for the remarks and legends of the terms and abbreviations for the floor plans of residential properties.

備註：平面圖所列數字為以毫米標示之建築結構尺寸。
Note: The dimensions of floor plans are all structural dimensions in millimeter.

每個住宅物業 Each Residential Property	單位 Unit 樓層 Floor	A	B	C	D	E	F	G
層與層之間的高度 Floor to Floor Height (毫米 mm)	30/F	3900#, 4200*	3350, 3550, 3900#, 4200*	3500, 3900#, 4200*	3900#, 4200*	3900#, 4200*	3500, 3900#, 4200*	3500, 3900#, 4200*
樓板(不包括灰泥)的厚度 Thickness of Floor (excluding plaster) (毫米 mm)	30/F	200, 800, 1100	150, 200, 250, 800, 1100	150, 200, 250, 800, 1100	200, 800, 1100	200, 800, 1100	150, 200, 250, 800, 1100	150, 200, 250, 800, 1100

10. 期數的住宅物業的樓面平面圖 FLOOR PLANS OF RESIDENTIAL PROPERTIES IN THE PHASE

第6座30樓A單位之現狀間隔平面圖 AS IS FLOOR PLAN FOR FLAT A OF 30/F, BLOCK 6



每個住宅物業 Each Residential Property	單位 Unit	
	樓層 Floor	A
層與層之間的高度 Floor to Floor Height (毫米 mm)	30/F	3900*, 4200*
樓板 (不包括灰泥) 的厚度 Thickness of Floor (excluding plaster) (毫米 mm)	30/F	200, 800, 1100

包括800毫米厚之結構轉換層。

*包括1100毫米厚之結構轉換層及混凝土填充層。

Including 800mm thick transfer plate.

*Including 1100mm thick transfer plate and mass concrete fill.

比例尺 SCALE: 0米(M) 5米(M)

因住宅物業的較高樓層的結構牆的厚度遞減，較高樓層的內部面積，一般比較低樓層的內部面積稍大。請參閱本售樓說明書第24頁為住宅物業樓面平面圖而設之備註及名詞及簡稱的圖例。

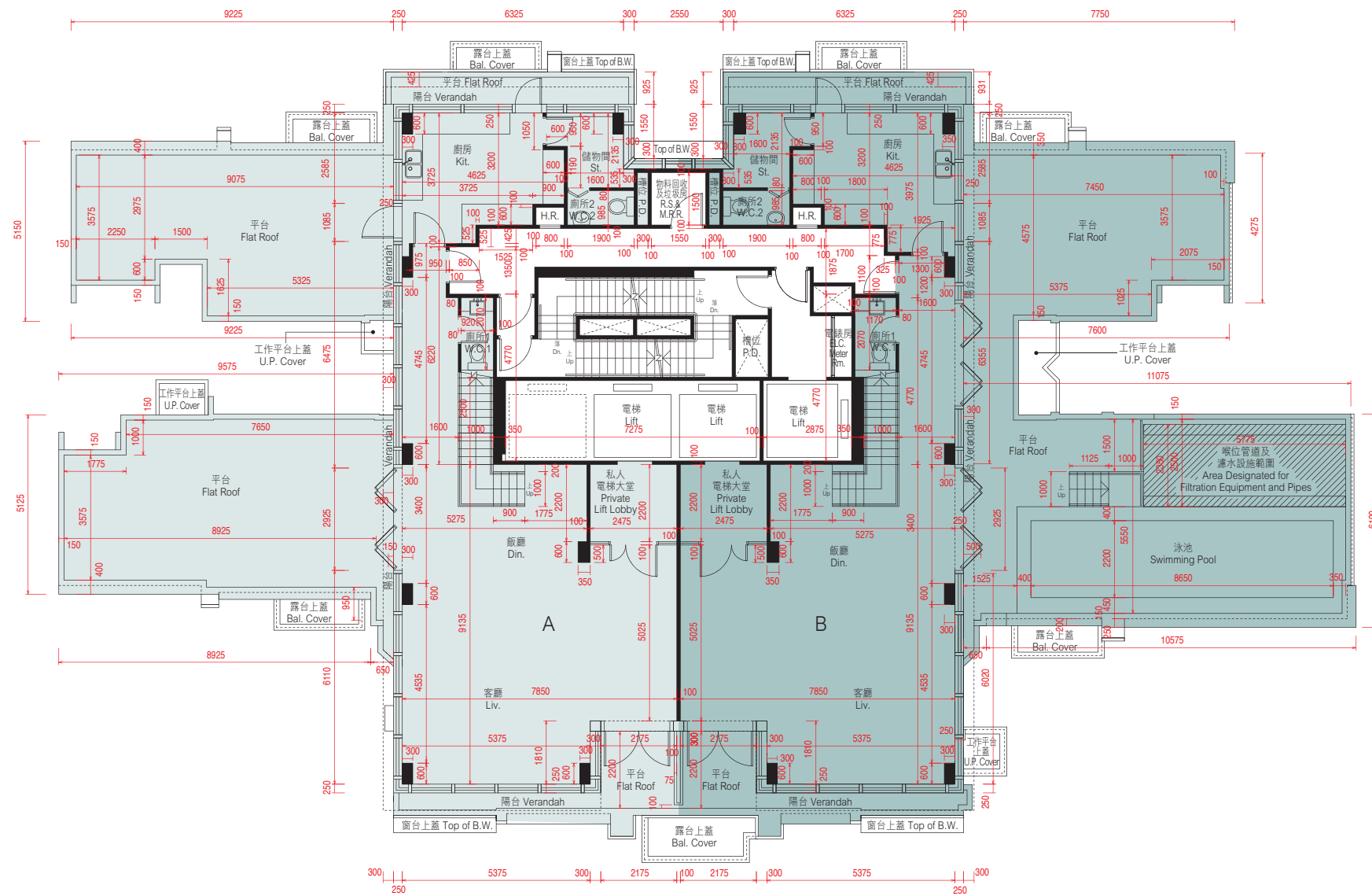
The internal areas of the residential properties on the upper floors will generally be slightly larger than those on the lower floors because of the reducing thickness of the structural walls on the upper floors.

Please refer to page 24 of this sales brochure for the remarks and legends of the terms and abbreviations for the floor plans of residential properties.

備註：平面圖所列數字為以毫米標示之建築結構尺寸。

Note: The dimensions of floor plans are all structural dimensions in millimeter.

第6座31樓平面圖 (複式低層) BLOCK 6—31/F FLOOR PLAN (LOWER DUPLEX)



比例尺SCALE: 0米(M) 5米(M)

備註 Note :

1. 平面圖所列數字為以毫米標示之建築結構尺寸。
 2. 以平方呎顯示之面積均依據1平方米=10.764平方呎換算，並四捨五入至整數。
1. The dimensions of floor plans are all structural dimensions in millimeter.
 2. Areas in square feet are converted at a rate of 1 square metre to 10.764 square feet and rounded to the nearest integer.

註釋 Explanatory Note :

已預留作喉位管道及濾水設施之沒有遮蓋的面積(已計算入平台面積)：31樓B單位為13.571平方米(146平方呎)。因住宅物業的較高樓層的結構牆的厚度遞減，較高樓層的內部面積，一般比較低樓層的內部面積稍大。請參閱本售樓說明書第24頁為住宅物業樓面平面圖而設之備註及名詞及簡稱的圖例。

Uncovered area designated for filtration equipment and pipes (included in the area of flat roof): Flat B on 31/F is 13.571 sq.m. (146 sq.ft.).

The internal areas of the residential properties on the upper floors will generally be slightly larger than those on the lower floors because of the reducing thickness of the structural walls on the upper floors.

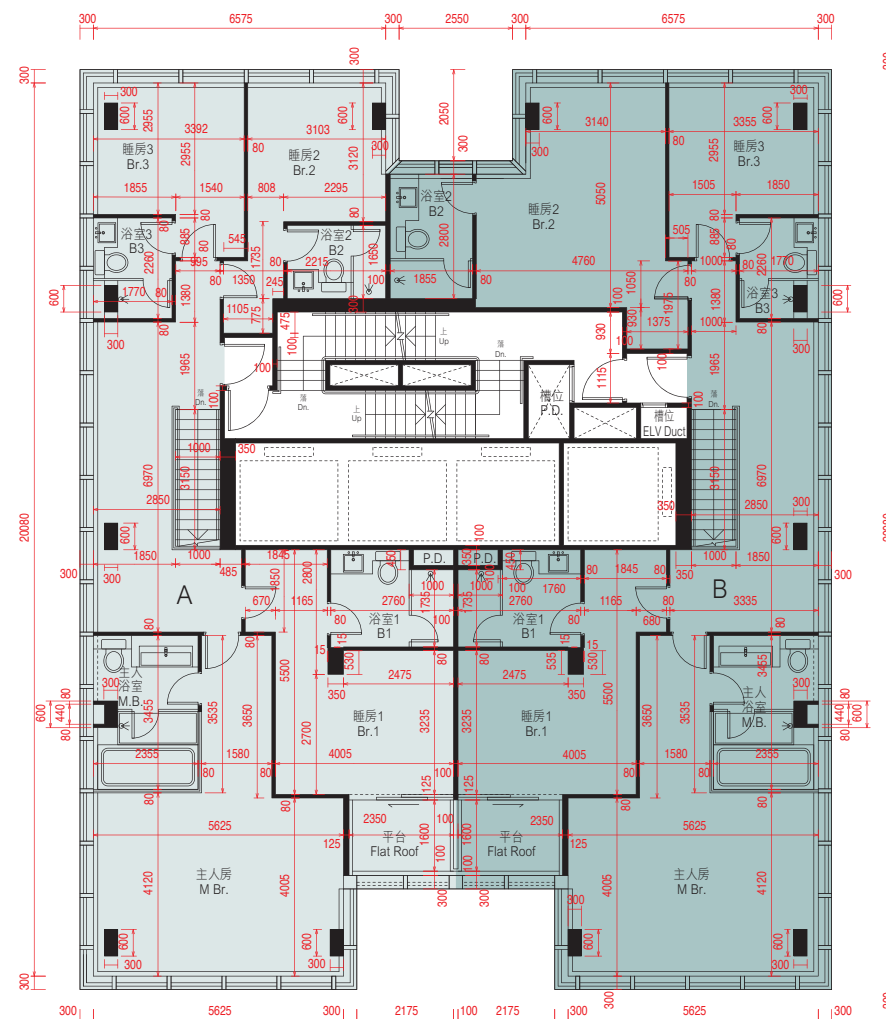
Please refer to page 24 of this sales brochure for the remarks and legends of the terms and abbreviations for the floor plans of residential properties.

每個住宅物業 Each Residential Property	單位 Unit 樓層 Floor	A	B
層與層之間的高度 Floor to Floor Height (毫米 mm)	31/F	3340, 3500	3340, 3500
樓板(不包括灰泥)的厚度 Thickness of Floor (excluding plaster) (毫米 mm)	31/F	140, 300	140, 300



10. 期數的住宅物業的樓面平面圖 FLOOR PLANS OF RESIDENTIAL PROPERTIES IN THE PHASE

第6座32樓平面圖 (複式高層) BLOCK 6 — 32/F FLOOR PLAN (UPPER DUPLEX)



比例尺SCALE: 0米(M) 5米(M)

因住宅物業的較高樓層的結構牆的厚度遞減，較高樓層的內部面積，一般比較低樓層的內部面積稍大。
請參閱本售樓說明書第24頁為住宅物業樓面平面圖而設之備註及名詞及簡稱的圖例。

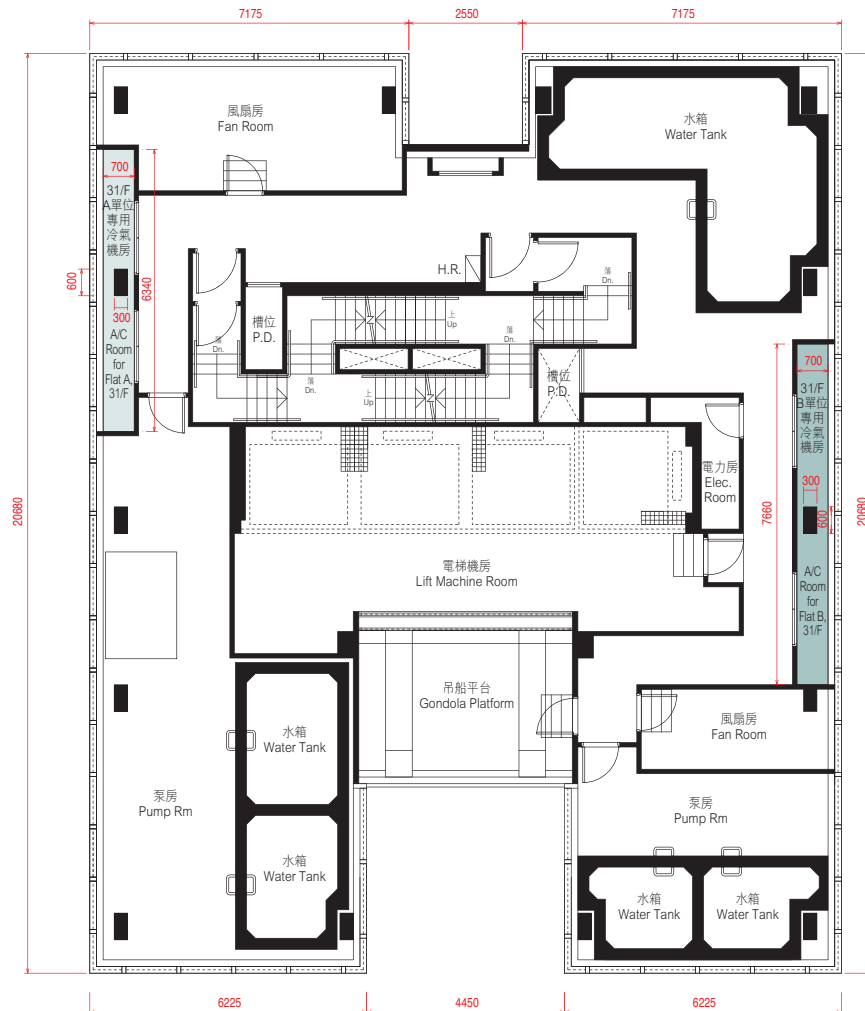
The internal areas of the residential properties on the upper floors will generally be slightly larger than those on the lower floors because of the reducing thickness of the structural walls on the upper floors.

Please refer to page 24 of this sales brochure for the remarks and legends of the terms and abbreviations for the floor plans of residential properties.

備註：平面圖所列數字為以毫米標示之建築結構尺寸。
Note: The dimensions of floor plans are all structural dimensions in millimeter.

每個住宅物業 Each Residential Property	單位 Unit		
	樓層 Floor	A	B
層與層之間的高度 Floor to Floor Height (毫米 mm)	32/F	3500	3500
樓板 (不包括灰泥) 的厚度 Thickness of Floor (excluding plaster) (毫米 mm)	32/F	150, 200	150, 200

第6座機電樓層平面圖 BLOCK 6—ELECTRICAL & MECHANICAL FLOOR PLAN



比例尺SCALE: 0米(M) 5米(M)

每個住宅單位的層與層之間的高度：不適用。
 每個住宅單位的樓板（不包括灰泥）的厚度：不適用。
 因住宅物業的較高樓層的結構牆的厚度遞減，較高樓層的內部面積，一般比較低樓層的內部面積稍大。

The floor-to-floor height of each residential property : Not applicable.
 The thickness of the floor slabs (excluding plaster) of each residential property : Not applicable.
 The internal areas of the residential properties on the upper floors will generally be slightly larger than those on the lower floors because of the reducing thickness of the structural walls on the upper floors.

備註：平面圖所列數字為以毫米標示之建築結構尺寸。
 Note: The dimensions of floor plans are all structural dimensions in millimeter.

名詞及簡稱之圖例 LEGENDS OF THE TERMS AND ABBREVIATIONS

A/C	= 冷氣機平台 Air-conditioning platform
B	= 浴室 Bathroom
B.W.	= 窗台 Bay window
Bal.	= 露台 Balcony
Bal. Cover	= 下層露台上蓋 Top of balcony cover
Br.	= 睡房 Bedroom
Din.	= 飯廳 Dining room
Dn.	= 落 Down
Elec. Room	= 電力房 Electricity room
ELV Duct	= 超低壓電線槽位 Extra-low voltage electricity duct
ELV Room	= 超低壓電力房 Extra-low voltage electricity room
F.R.	= 平台 Flat roof
H.R.	= 喉轆 Hose reel
Kit.	= 廚房 Kitchen
Liv.	= 客廳 Living room
Logistic Rm.	= 物流房 Logistic room
M.B.	= 主人房浴室 Master bathroom
M.Br.	= 主人房 Master bedroom
P.D.	= 管道槽位 Pipe duct
Riser Duct	= 電線槽位 Riser duct
R.S. & M.R.R.	= 垃圾及物料回收房 Refuse storage & material recovery room
St.	= 儲物間 Store
Top of B.W.	= 下層窗台頂 Top of bay window
U.P.	= 工作平台 Utility platform
U.P. Cover	= 下層工作平台上蓋 Top of utility platform cover
W.C.	= 廁所 Washing chamber
W.M.C.	= 水錶位 Water meter cabinet

住宅物業的平面圖的備註:

1. 部分住宅單位的露台、陽台、工作平台、平台或外牆或設有外露之公用喉管，或外牆裝飾板內藏之公用喉管。
2. 部分住宅單位內之部分天花或有跌級樓板，用以安裝上層之機電設備或配合上層之結構、建築設計及/或裝修設計上的需要。
3. 部分住宅單位內或設有假陣或假天花用以安裝冷氣喉管及/或其他機電設備。

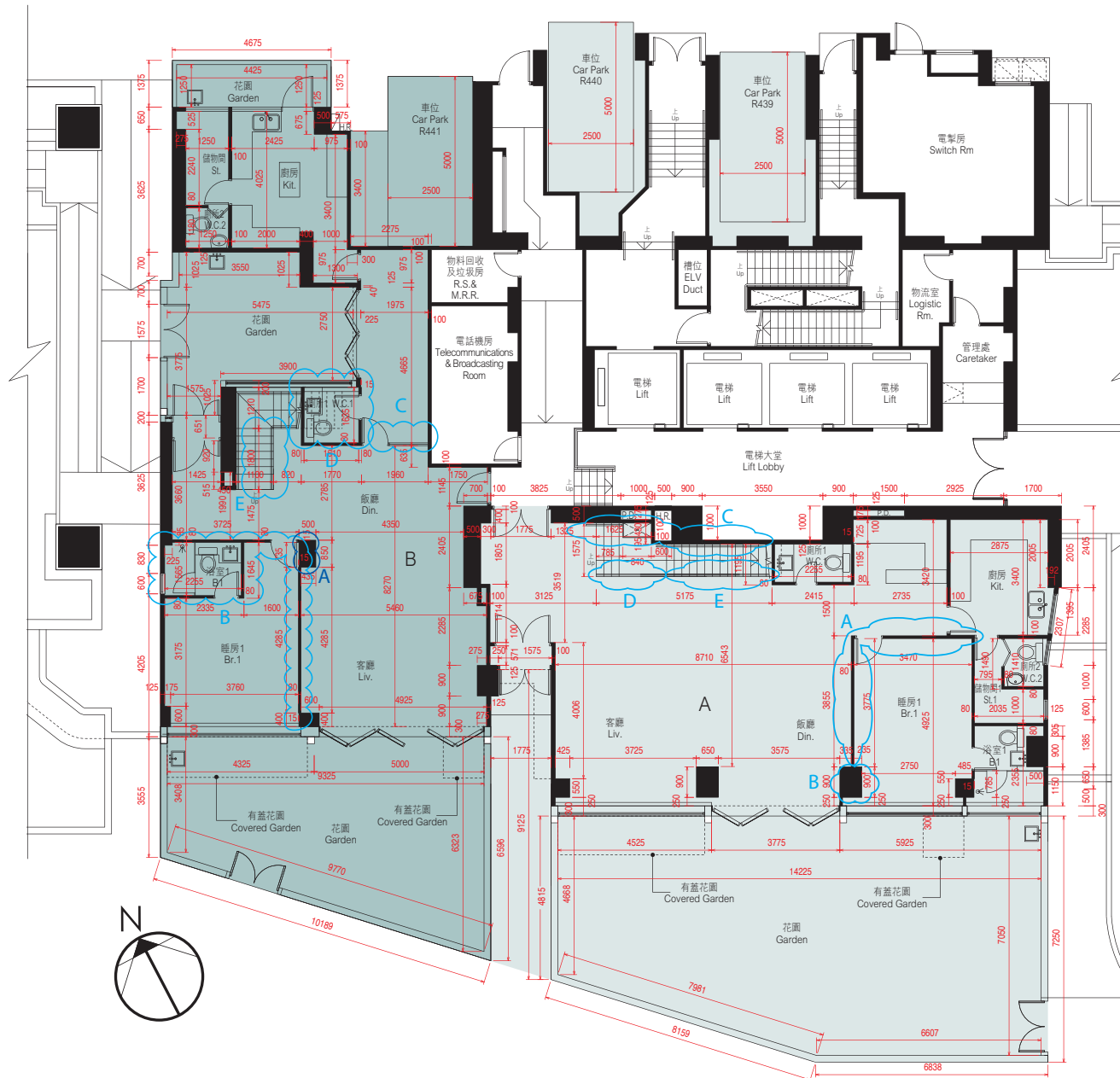
Remarks for the Floor Plans of Residential Properties:

1. Common pipes exposed or enclosed in cladding may be located at the balcony, verandah, utility platform, flat roof or external wall of some residential units.
2. There may be sunken slabs at some parts of the ceiling inside some residential units for the installation of mechanical and electrical services of the floor above or due to the structural, architectural and/or decoration design requirements of the floor above.
3. There may be ceiling bulkheads or false ceiling inside some residential units for the installation of air-conditioning conduits and/or other mechanical and electrical services.

10. 期數的住宅物業的樓面平面圖

FLOOR PLANS OF RESIDENTIAL PROPERTIES IN THE PHASE

第7座地下平面圖 (複式低層) BLOCK 7 — GROUND FLOOR PLAN (LOWER DUPLEX)



第7座地下及1樓A單位及B單位在發展項目落成後進行小型工程或獲《建築物條例》豁免的工程而有所改動。該等改動的大概位置已於本樓面平面圖中作標示。

Flat A and Flat B, G/F & 1/F of Block 7 have been altered by way of minor works or exempted works under the Buildings Ordinance after completion of the Development. The approximate locations of alterations are indicated on this floor plan.

第7座地下及1樓A單位的改動工程包括：

- (A) 原睡房1的間隔牆被移除並以不同尺寸的玻璃間隔牆及趟門取代。
- (B) 部分牆體加厚。
- (C) 樓梯的原扶手被移除並以不同物料及設計的扶手取代。
- (D) 部分樓梯加闊。
- (E) 增加間隔牆及隱藏門以提供儲物間2。

Alteration works for Flat A, G/F & 1/F of Block 7 include :

- (A) Original partition walls of bedroom 1 were demolished and replaced by glass partition walls and sliding door in different dimensions.
- (B) Part of the wall was thickened.
- (C) Original railing of the staircase was demolished and replaced by railing of different material and design.
- (D) Part of the staircase was widened.
- (E) Store 2 was added by addition of partition wall with concealed door.

第7座地下及1樓B單位的改動工程包括：

- (A) 部分牆體加厚。
- (B) 原睡房1的間隔牆及浴室1被移除。
- (C) 原間隔牆及門被移除。
- (D) 擴充廁所並加設淋浴間。
- (E) 原樓梯之扶手被移除，並新增間隔牆及門以提供儲物間。

Alteration works for Flat B, G/F & 1/F of Block 7 include :

- (A) Part of the wall was thickened.
- (B) Original partition walls of bedroom 1 and Bath 1 were demolished.
- (C) Original partition wall and door were demolished.
- (D) Washing chamber was enlarged to include an additional shower compartment.
- (E) Original railing of the staircase was demolished. Partition wall and door were added to provide a store.

比例尺 SCALE: 0米(M) 5米(M)

備註 Note :

平面圖所列數字為以毫米標示之建築結構尺寸。
The dimensions of floor plans are all structural dimensions in millimeter.

因住宅物業的較高樓層的結構牆的厚度遞減，較高樓層的內部面積，一般比較低樓層的內部面積稍大。請參閱本售樓說明書第32頁為住宅物業樓面平面圖而設之備註及名詞及簡稱的圖例。

The internal areas of the residential properties on the upper floors will generally be slightly larger than those on the lower floors because of the reducing thickness of the structural walls on the upper floors.

Please refer to page 32 of this sales brochure for the remarks and legends of the terms and abbreviations for the floor plans of residential properties.

第7座1樓平面圖 (複式高層) BLOCK 7 — 1/F FLOOR PLAN (UPPER DUPLEX)



第7座地下及1樓A單位及B單位在發展項目落成後進行小型工程或獲《建築物條例》豁免的工程而有所改動。該等改動的大概位置已於本樓面平面圖中作標示。

Flat A and Flat B, G/F & 1/F of Block 7 have been altered by way of minor works or exempted works under the Buildings Ordinance after completion of the Development. The approximate locations of alterations are indicated on this floor plan.

第7座地下及1樓A單位的改動工程包括：

(F) 原樓梯之扶手被移除。

Alteration works for Flat A, G/F & 1/F of Block 7 include :

(F) Original railing of the staircase was demolished.

第7座地下及1樓B單位的改動工程包括：

(F) 原樓梯之扶手被移除。

(G) 原主人房的門、部分間隔牆及睡房2之房門被移位。

Alteration works for Flat B, G/F & 1/F of Block 7 include :

(F) Original railing of the staircase was demolished.

(G) Original door and part of the partition wall of the Master Bedroom and door of Bedroom 2 were relocated.

因住宅物業的較高樓層的結構牆的厚度遞減，較高樓層的內部面積，一般比較低樓層的內部面積稍大。

請參閱本售樓說明書第32頁為住宅物業樓面平面圖而設之備註及名詞及簡稱的圖例。

The internal areas of the residential properties on the upper floors will generally be slightly larger than those on the lower floors because of the reducing thickness of the structural walls on the upper floors.

Please refer to page 32 of this sales brochure for the remarks and legends of the terms and abbreviations for the floor plans of residential properties.

比例尺 SCALE: 0米(M) 5米(M)

備註 Note :

1. 平面圖所列數字為以毫米標示之建築結構尺寸。
 2. 以平方呎顯示之面積均依據1平方米=10.764平方呎換算，並四捨五入至整數。
1. The dimensions of floor plans are all structural dimensions in millimeter.
 2. Areas in square feet are converted at a rate of 1 square metre to 10.764 square feet and rounded to the nearest integer.



註釋 Explanatory Note :

貼鄰住客停車位的面積(不計算入停車位面積或實用面積)：地下A單位為6.763平方米(73平方呎)，地下B單位為4.112平方米(44平方呎)。

由工作平台或露台遮蓋之花園面積(已計算入花園面積)：地下A單位為6.407平方米(69平方呎)，地下B單位為6.410平方米(69平方呎)。根據屋宇署規定，該面積最少兩邊不可圍封。

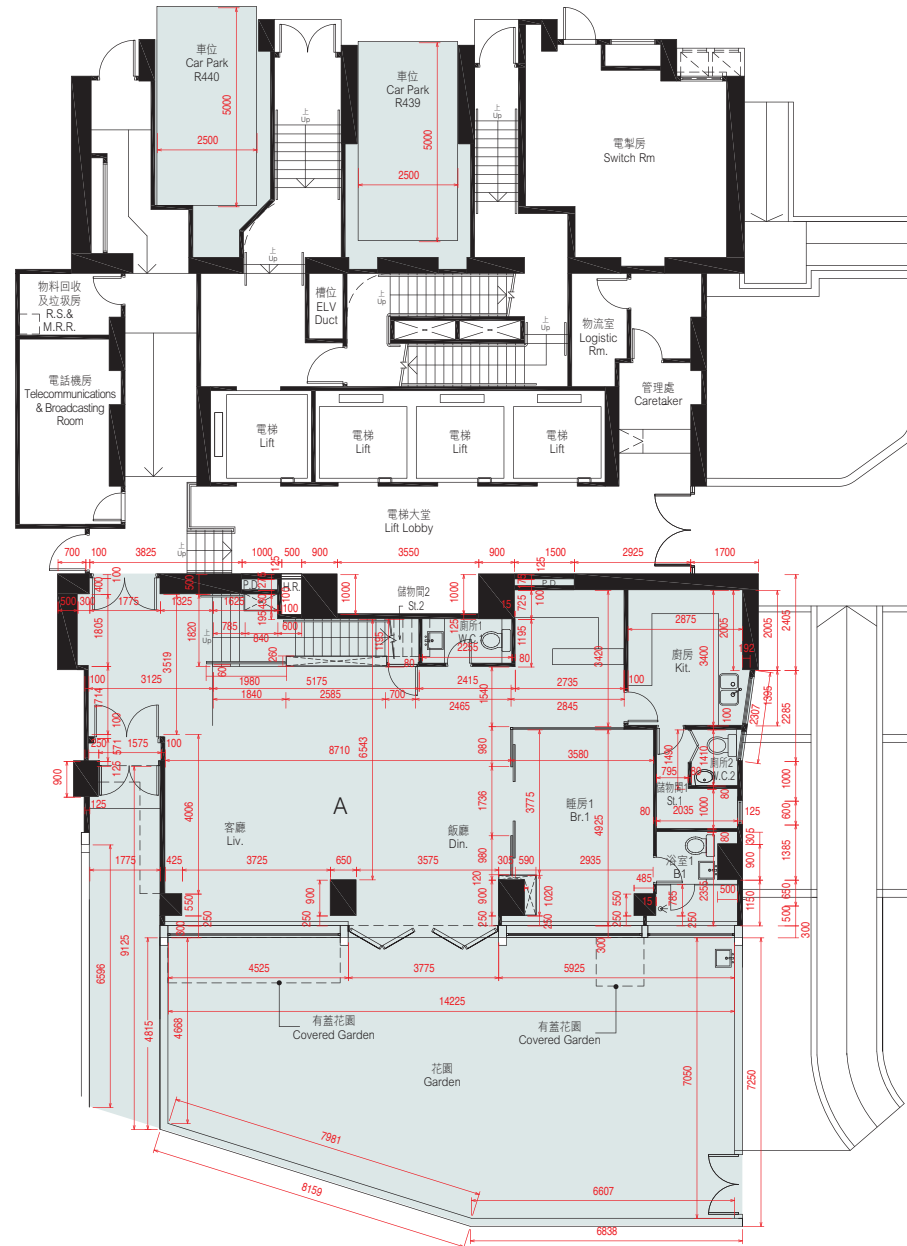
Area adjoining residential parking space (not included in the area of parking space or saleable area): Flat A on G/F is 6.763 sq.m. (73 sq.ft.), Flat B on G/F is 4.112 sq.m. (44 sq.ft.).

Area of garden covered by utility platform or balcony (included in the area of garden): Flat A on G/F is 6.407 sq.m. (69 sq.ft.), Flat B on G/F is 6.410 sq.m. (69 sq.ft.). Such areas shall be unenclosed on at least 2 sides as required by Buildings Department.

每個住宅物業 Each Residential Property	單位 Unit	A	B
	樓層 Floor		
層與層之間的高度 Floor to Floor Height (毫米 mm)	G/F	3500	3500
	1/F	3250	3250
樓板(不包括灰泥)的厚度 Thickness of Floor Slab (excluding plaster) (毫米 mm)	G/F	150, 200, 300	150, 200
	1/F	150, 200, 275, 300	150, 200, 250, 300

10. 期數的住宅物業的樓面平面圖 FLOOR PLANS OF RESIDENTIAL PROPERTIES IN THE PHASE

第7座地下 (複式低層) A單位之現狀間隔平面圖 AS IS FLOOR PLAN FOR THE GROUND FLOOR (LOWER DUPLEX) OF FLAT A, BLOCK 7



比例尺 SCALE: 0米(M) 5米(M)

因住宅物業的較高樓層的結構牆的厚度遞減，較高樓層的內部面積，一般比較低樓層的內部面積稍大。請參閱本售樓說明書第32頁為住宅物業樓面平面圖而設之備註及名詞及簡稱的圖例。

The internal areas of the residential properties on the upper floors will generally be slightly larger than those on the lower floors because of the reducing thickness of the structural walls on the upper floors.

Please refer to page 32 of this sales brochure for the remarks and legends of the terms and abbreviations for the floor plans of residential properties.

備註 Note :

1. 平面圖所列數字為以毫米標示之建築結構尺寸。
 2. 以平方呎顯示之面積均依據1平方米=10.764平方呎換算，並四捨五入至整數。
1. The dimensions of floor plans are all structural dimensions in millimeter.
2. Areas in square feet are converted at a rate of 1 square metre to 10.764 square feet and rounded to the nearest integer.

註釋 Explanatory Note :

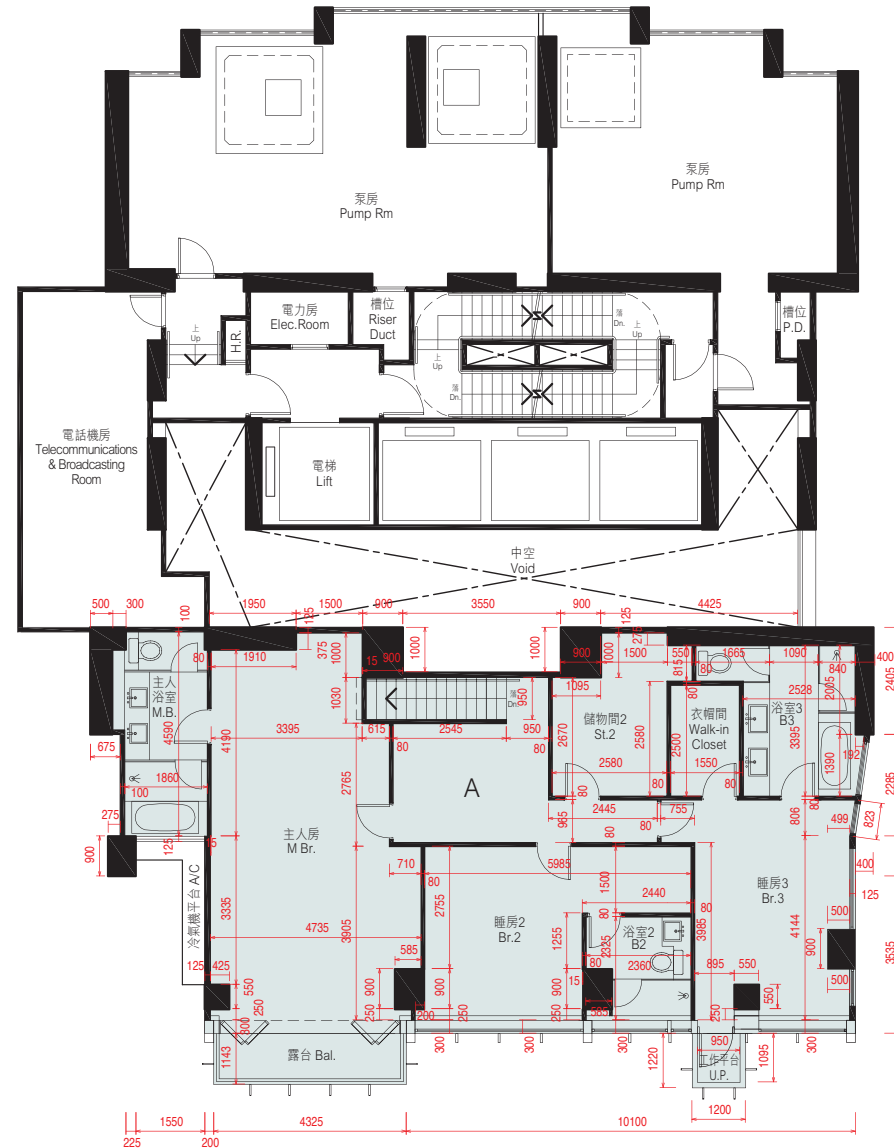
貼鄰住客停車位的面積(不計算入停車位面積或實用面積)：地下A單位為6.763平方米(73平方呎)。
由工作平台或露台遮蓋之花園面積(已計算入花園面積)：地下A單位為6.407平方米(69平方呎)。根據屋宇署規定，該面積最少兩邊不可圍封。

Area adjoining residential parking space (not included in the area of parking space or saleable area): Flat A on G/F is 6.763 sq.m. (73 sq.ft.).

Area of garden covered by utility platform or balcony (included in the area of garden): Flat A on G/F is 6.407 sq.m. (69 sq.ft.). Such areas shall be unenclosed on at least 2 sides as required by Buildings Department.

每個住宅物業 Each Residential Property	單位 Unit 樓層 Floor	A
層與層之間的高度 Floor to Floor Height (毫米 mm)	G/F	3500
樓板 (不包括灰泥) 的厚度 Thickness of Floor Slab (excluding plaster) (毫米 mm)	G/F	150, 200, 300

第7座1樓 (複式高層) A單位之現狀間隔平面圖 AS IS FLOOR PLAN FOR THE FIRST FLOOR (UPPER DUPLEX) OF FLAT A, BLOCK 7



比例尺 SCALE: 0米(M) 5米(M)

備註：平面圖所列數字為以毫米標示之建築結構尺寸。
Note: The dimensions of floor plans are all structural dimensions in millimeter.

因住宅物業的較高樓層的結構牆的厚度遞減，較高樓層的內部面積，一般比較低樓層的內部面積稍大。請參閱本售樓說明書第32頁為住宅物業樓面平面圖而設之備註及名詞及簡稱的圖例。

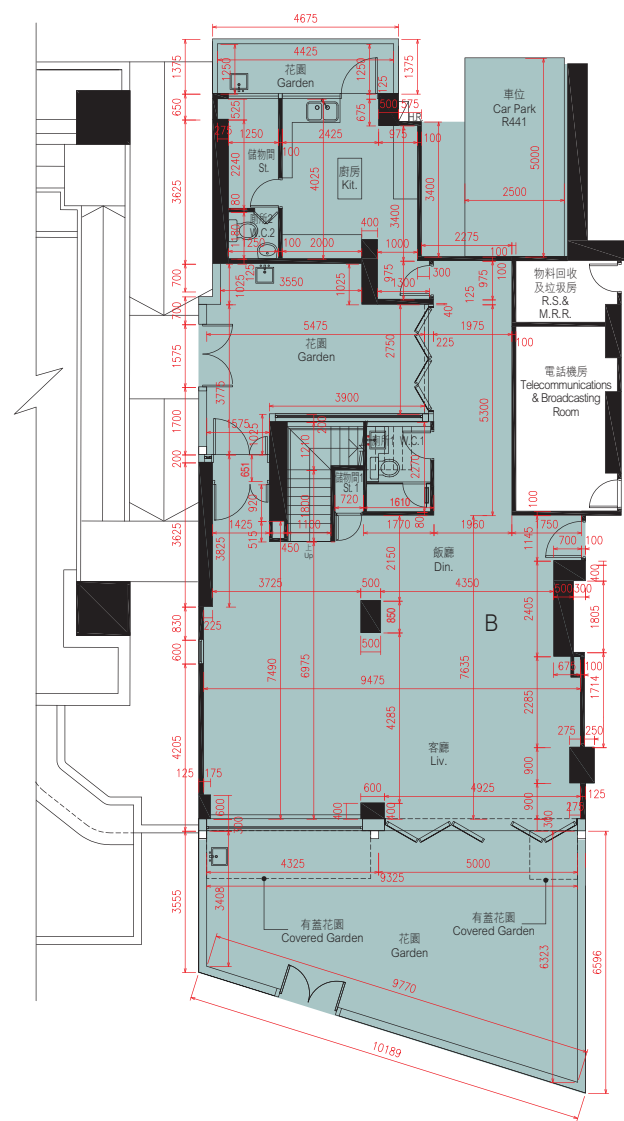
The internal areas of the residential properties on the upper floors will generally be slightly larger than those on the lower floors because of the reducing thickness of the structural walls on the upper floors.

Please refer to page 32 of this sales brochure for the remarks and legends of the terms and abbreviations for the floor plans of residential properties.

每個住宅物業 Each Residential Property	單位 Unit 樓層 Floor	A
層與層之間的高度 Floor to Floor Height (毫米 mm)	1/F	3250
樓板 (不包括灰泥) 的厚度 Thickness of Floor Slab (excluding plaster) (毫米 mm)	1/F	150, 200, 275, 300

10. 期數的住宅物業的樓面平面圖 FLOOR PLANS OF RESIDENTIAL PROPERTIES IN THE PHASE

第7座地下 (複式低層) B單位之現狀間隔平面圖 AS IS FLOOR PLAN FOR THE GROUND FLOOR (LOWER DUPLEX) OF FLAT B, BLOCK 7



比例尺 SCALE: 0米(M) 5米(M)

因住宅物業的較高樓層的結構牆的厚度遞減，較高樓層的內部面積，一般比較低樓層的內部面積稍大。請參閱本售樓說明書第32頁為住宅物業樓面平面圖而設之備註及名詞及簡稱的圖例。

The internal areas of the residential properties on the upper floors will generally be slightly larger than those on the lower floors because of the reducing thickness of the structural walls on the upper floors.

Please refer to page 32 of this sales brochure for the remarks and legends of the terms and abbreviations for the floor plans of residential properties.

備註 Note :

1. 平面圖所列數字為以毫米標示之建築結構尺寸。
 2. 以平方呎顯示之面積均依據1平方米=10.764平方呎換算，並四捨五入至整數。
1. The dimensions of floor plans are all structural dimensions in millimeter.
 2. Areas in square feet are converted at a rate of 1 square metre to 10.764 square feet and rounded to the nearest integer.

註釋 Explanatory Note :

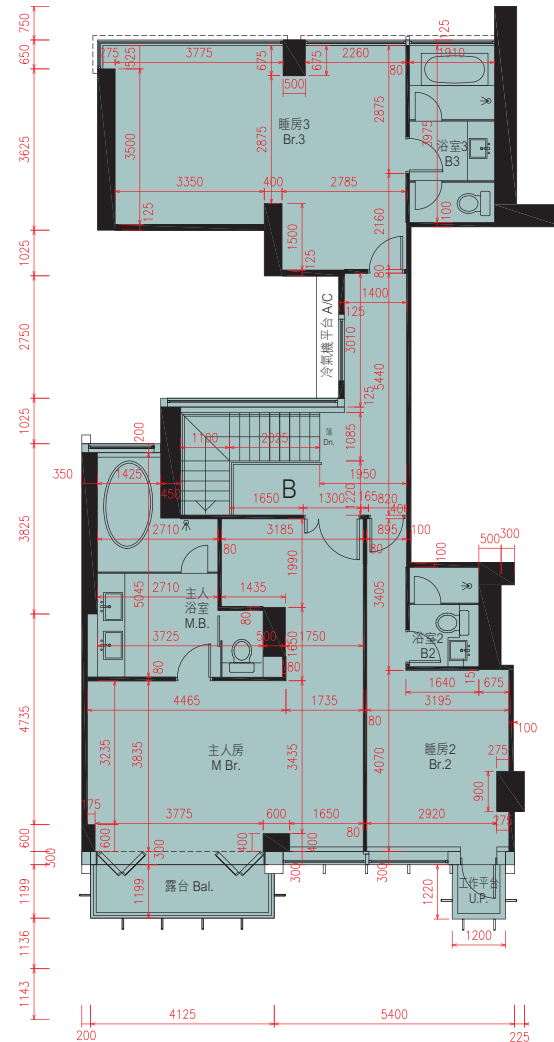
貼鄰住客停車位的面積(不計算入停車位面積或實用面積)：地下B單位為4.112平方米(44平方呎)。
由工作平台或露台遮蓋之花園面積(已計算入花園面積)：地下B單位為6.410平方米(69平方呎)。根據屋宇署規定，該面積最少兩邊不可圍封。

Area adjoining residential parking space (not included in the area of parking space or saleable area): Flat B on G/F is 4.112 sq.m. (44 sq.ft.).

Area of garden covered by utility platform or balcony (included in the area of garden): Flat B on G/F is 6.410 sq.m. (69 sq.ft.). Such areas shall be unenclosed on at least 2 sides as required by Buildings Department.

每個住宅物業 Each Residential Property	單位 Unit 樓層 Floor	B
層與層之間的高度 Floor to Floor Height (毫米 mm)	G/F	3500
樓板 (不包括灰泥) 的厚度 Thickness of Floor Slab (excluding plaster) (毫米 mm)	G/F	150, 200

第7座1樓 (複式高層) B單位之現狀間隔平面圖 AS IS FLOOR PLAN FOR THE FIRST FLOOR (UPPER DUPLEX) OF FLAT B, BLOCK 7



比例尺 SCALE: 0米(M) 5米(M)

備註：平面圖所列數字為以毫米標示之建築結構尺寸。
Note: The dimensions of floor plans are all structural dimensions in millimeter.

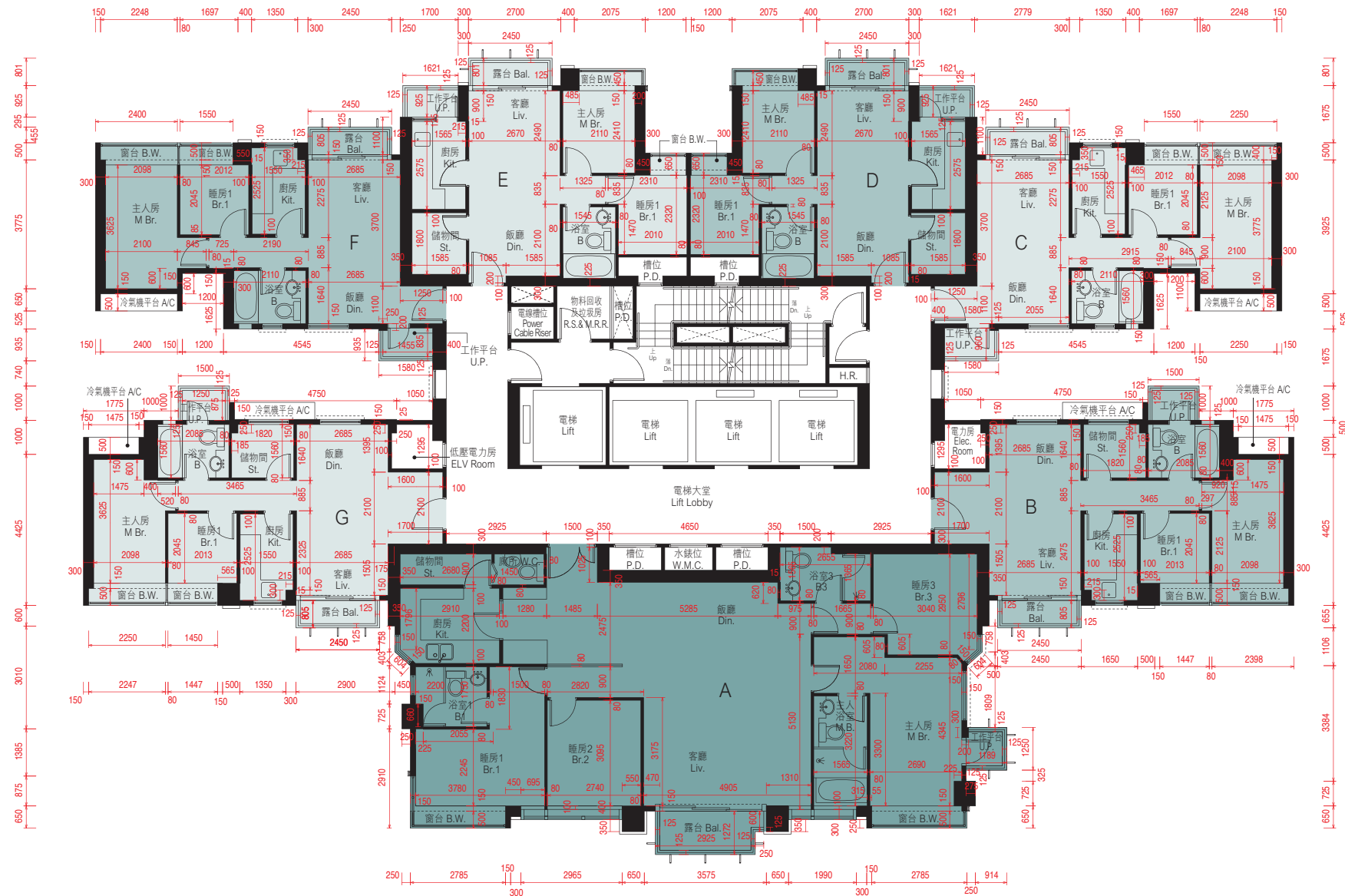
因住宅物業的較高樓層的結構牆的厚度遞減，較高樓層的內部面積，一般比較低樓層的內部面積稍大。
請參閱本售樓說明書第32頁為住宅物業樓面平面圖而設之備註及名詞及簡稱的圖例。

The internal areas of the residential properties on the upper floors will generally be slightly larger than those on the lower floors because of the reducing thickness of the structural walls on the upper floors.

Please refer to page 32 of this sales brochure for the remarks and legends of the terms and abbreviations for the floor plans of residential properties.

每個住宅物業 Each Residential Property	單位 Unit 樓層 Floor	B
層與層之間的高度 Floor to Floor Height (毫米 mm)	1/F	3250
樓板 (不包括灰泥) 的厚度 Thickness of Floor Slab (excluding plaster) (毫米 mm)	1/F	150, 200, 250, 300

第7座5樓 - 7樓, 10樓 - 12樓, 15樓, 18樓 - 21樓及25樓 - 26樓平面圖 BLOCK 7 — 5/F - 7/F, 10/F - 12/F, 15/F, 18/F - 21/F & 25/F - 26/F FLOOR PLAN



比例尺SCALE: 0米(M) 5米(M)

因住宅物業的較高樓層的結構牆的厚度遞減，較高樓層的內部面積，一般比較低樓層的內部面積稍大。
請參閱本售樓說明書第32頁為住宅物業樓面平面圖而設之備註及名詞及簡稱的圖例。

The internal areas of the residential properties on the upper floors will generally be slightly larger than those on the lower floors because of the reducing thickness of the structural walls on the upper floors.

Please refer to page 32 of this sales brochure for the remarks and legends of the terms and abbreviations for the floor plans of residential properties.

備註：平面圖所列數字為以毫米標示之建築結構尺寸。
Note: The dimensions of floor plans are all structural dimensions in millimeter.

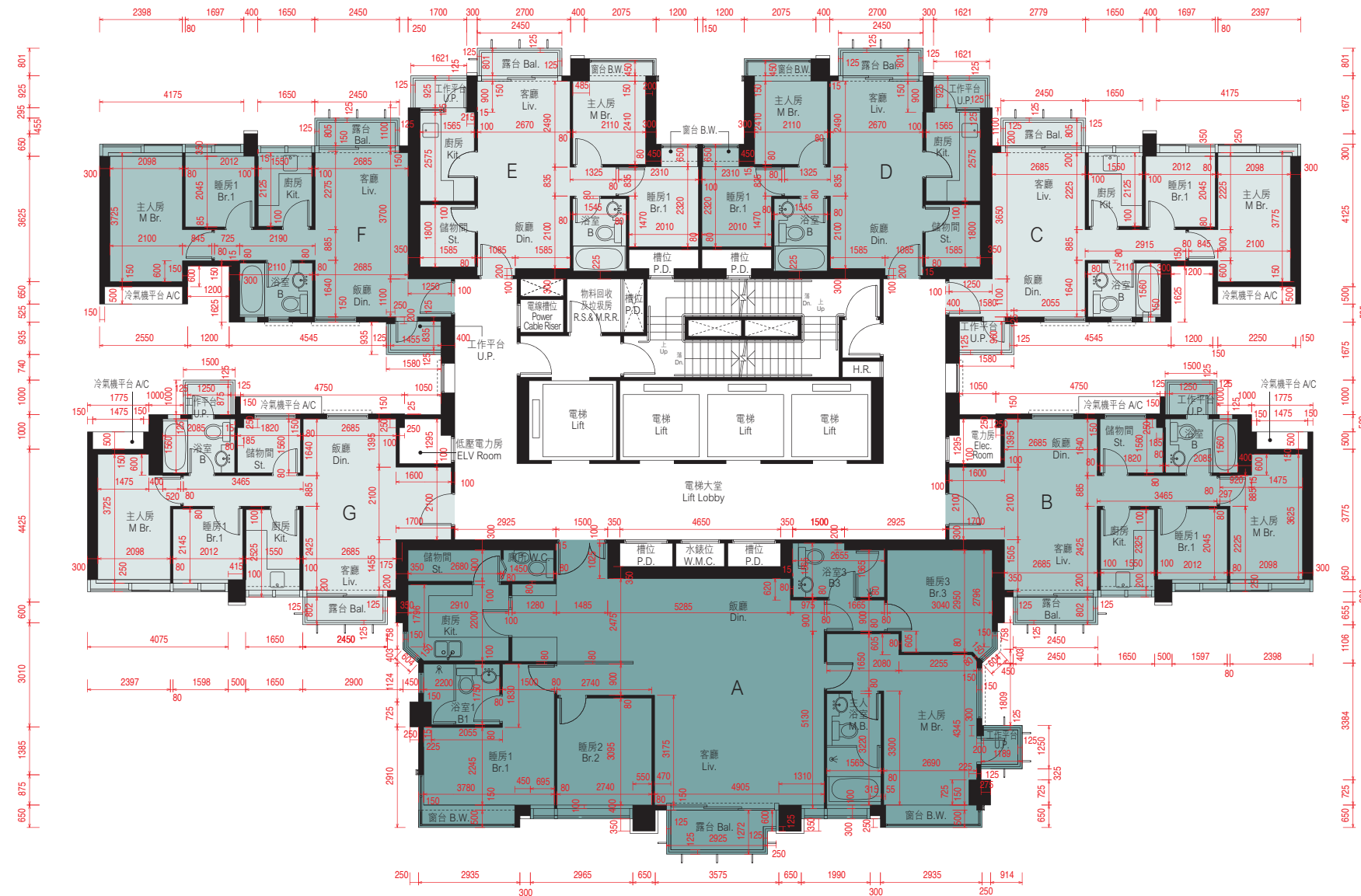
每個住宅物業 Each Residential Property	樓層 Floor	單位 Unit	A	B	C	D	E	F	G
層與層之間的高度 Floor to Floor Height (毫米 mm)	5/F - 7/F, 10/F - 12/F, 15/F, 18/F - 21/F & 25/F - 26/F		3150	3150	3150	3150	3150	3150	3150
樓板(不包括灰泥)的厚度 Thickness of Floor Slab (excluding plaster) (毫米 mm)	5/F - 7/F, 10/F - 12/F, 15/F, 18/F - 21/F & 25/F - 26/F		200, 250	150, 200	150, 200, 325	150, 200	150, 200	150, 200	150, 200

10. 期數的住宅物業的樓面平面圖

FLOOR PLANS OF RESIDENTIAL PROPERTIES IN THE PHASE

第7座8樓, 9樓, 16樓, 17樓, 22樓, 23樓, 27樓及28樓平面圖

BLOCK 7 — 8/F, 9/F, 16/F, 17/F, 22/F, 23/F, 27/F & 28/F FLOOR PLAN



比例尺SCALE: 0米(M) 5米(M)

因住宅物業的較高樓層的結構牆的厚度遞減，較高樓層的內部面積，一般比較低樓層的內部面積稍大。
請參閱本售樓說明書第32頁為住宅物業樓面平面圖而設之備註及名詞及簡稱的圖例。

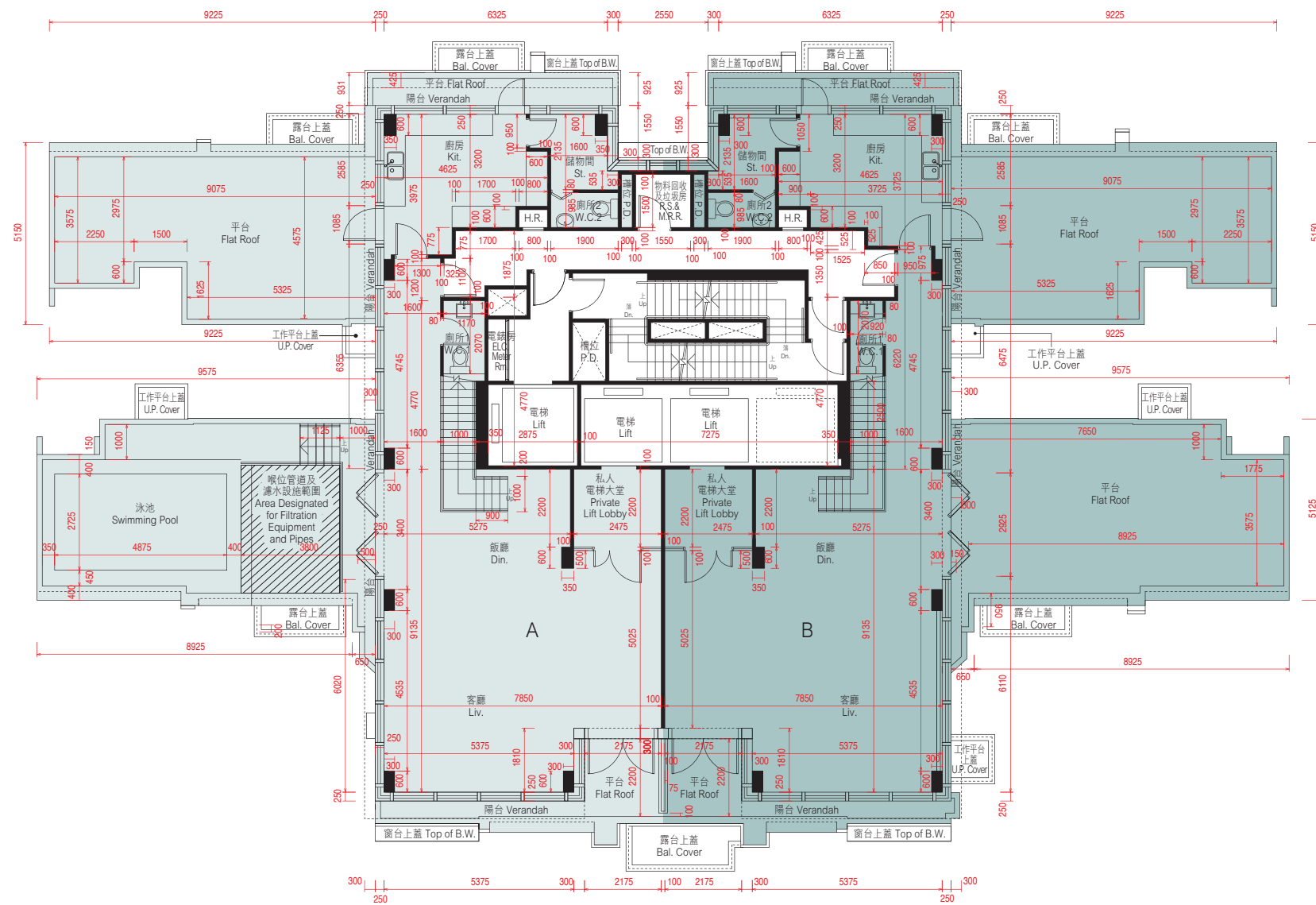
The internal areas of the residential properties on the upper floors will generally be slightly larger than those on the lower floors because of the reducing thickness of the structural walls on the upper floors.
Please refer to page 32 of this sales brochure for the remarks and legends of the terms and abbreviations for the floor plans of residential properties.

- # 包括800毫米厚之結構轉換層。
- * 包括1100毫米厚之結構轉換層及混凝土填充層。
- # Including 800mm thick transfer plate.
- * Including 1100mm thick transfer plate and mass concrete fill.

備註：平面圖所列數字為以毫米標示之建築結構尺寸。
Note: The dimensions of floor plans are all structural dimensions in millimeter.

每個住宅物業 Each Residential Property	單位 Unit 樓層 Floor	A	B	C	D	E	F	G
層與層之間的高度 Floor to Floor Height (毫米 mm)	8/F, 16/F, 22/F & 27/F	2800, 3150	3150	3150	3150	3150	3150	3150
	9/F, 17/F & 23/F	3150	2800, 3150	3150	3150	3150	3150	2800, 3150
	28/F	3900#, 4200*	3350, 3450, 3900#, 4200*	3500, 3900#, 4200*	3900#, 4200*	3900#, 4200*	3500, 3900#, 4200*	3350, 3450, 3900#, 4200*
樓板(不包括灰泥)的厚度 Thickness of Floor Slab (excluding plaster) (毫米 mm)	8/F, 16/F, 22/F & 27/F	200, 250	150, 200	150, 200	150, 200	150, 200	150, 200	150, 200
	9/F, 17/F & 23/F	200, 250	150, 200	150, 200	150, 200	150, 200	150, 200	150, 200
	28/F	200, 800, 1100	150, 200, 250, 800, 1100	150, 200, 800, 1100	200, 800, 1100	200, 800, 1100	150, 200, 250, 800, 1100	150, 200, 250, 350, 800, 1100

第7座29樓平面圖 (複式低層) BLOCK 7 — 29/F FLOOR PLAN (LOWER DUPLEX)



比例尺SCALE: 0米(M) 5米(M)

備註 Note:

1. 平面圖所列數字為以毫米標示之建築結構尺寸。
 2. 以平方呎顯示之面積均依據1平方米=10.764平方呎換算，並四捨五入至整數。
1. The dimensions of floor plans are all structural dimensions in millimeter.
 2. Areas in square feet are converted at a rate of 1 square metre to 10.764 square feet and rounded to the nearest integer.

註釋 Explanatory Note:

已預留作喉位管道及濾水設施之沒有遮蓋的面積(已計算入平台面積): 29樓A單位為10.150平方米(109平方呎)。因住宅物業的較高樓層的結構牆的厚度遞減，較高樓層的內部面積，一般比較低樓層的內部面積稍大。請參閱本售樓說明書第32頁為住宅物業樓面平面圖而設之備註及名詞及簡稱的圖例。

Uncovered area designated for filtration equipment and pipes (included in the area of flat roof): Flat A on 29/F is 10.150 sq.m. (109 sq.ft.).

The internal areas of the residential properties on the upper floors will generally be slightly larger than those on the lower floors because of the reducing thickness of the structural walls on the upper floors.

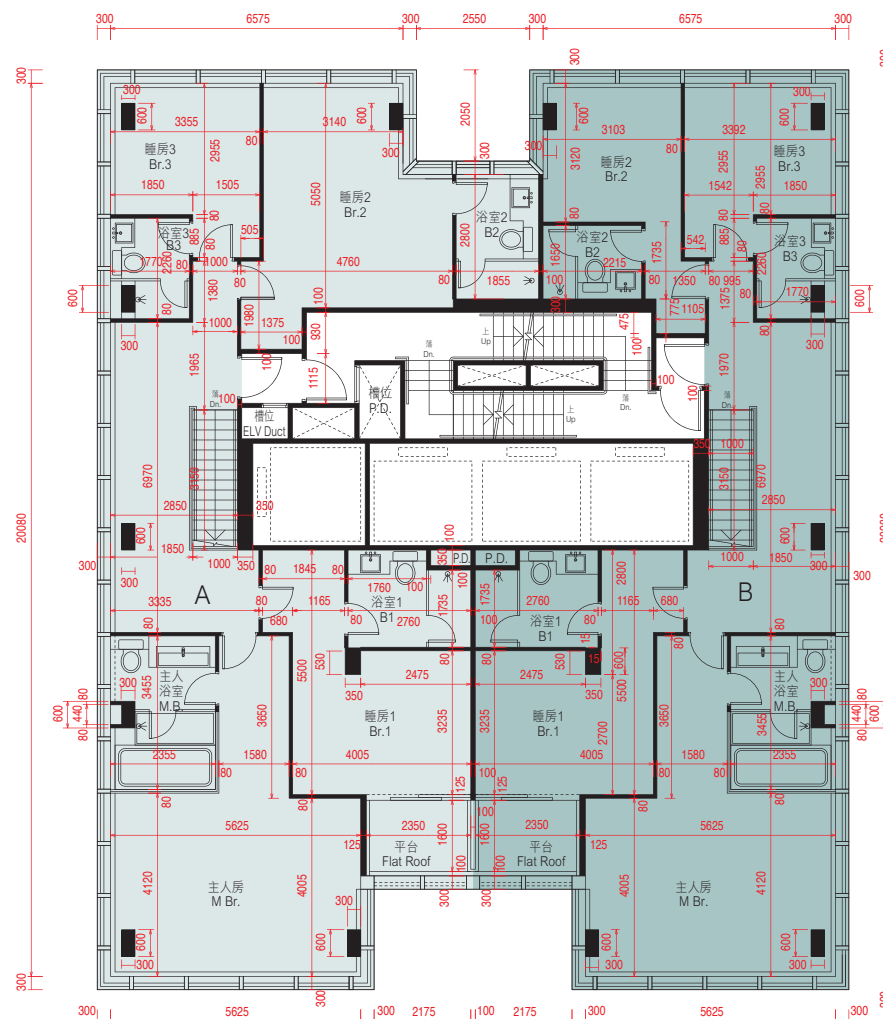
Please refer to page 32 of this sales brochure for the remarks and legends of the terms and abbreviations for the floor plans of residential properties.

每個住宅物業 Each Residential Property	單位 Unit		
	樓層 Floor	A	B
層與層之間的高度 Floor to Floor Height (毫米 mm)	29/F	3340, 3500	3340, 3500
樓板(不包括灰泥)的厚度 Thickness of Floor Slab (excluding plaster) (毫米 mm)	29/F	140, 300	140, 300



10. 期數的住宅物業的樓面平面圖 FLOOR PLANS OF RESIDENTIAL PROPERTIES IN THE PHASE

第7座30樓平面圖 (複式高層) BLOCK 7 — 30/F FLOOR PLAN (UPPER DUPLEX)



比例尺SCALE: 0米(M) 5米(M)

因住宅物業的較高樓層的結構牆的厚度遞減，較高樓層的內部面積，一般比較低樓層的內部面積稍大。
請參閱本售樓說明書第32頁為住宅物業樓面平面圖而設之備註及名詞及簡稱的圖例。

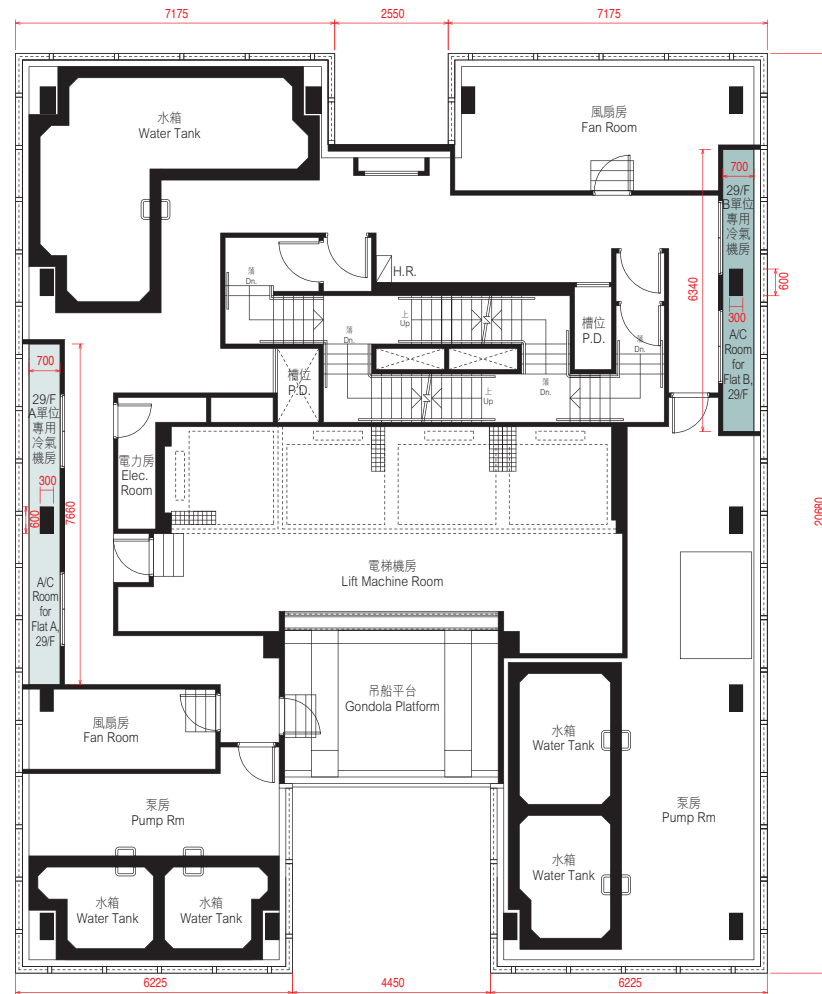
The internal areas of the residential properties on the upper floors will generally be slightly larger than those on the lower floors because of the reducing thickness of the structural walls on the upper floors.

Please refer to page 32 of this sales brochure for the remarks and legends of the terms and abbreviations for the floor plans of residential properties.

備註：平面圖所列數字為以毫米標示之建築結構尺寸。
Note: The dimensions of floor plans are all structural dimensions in millimeter.

每個住宅物業 Each Residential Property	單位 Unit		
	樓層 Floor	A	B
層與層之間的高度 Floor to Floor Height (毫米 mm)	30/F	3500	3500
樓板 (不包括灰泥) 的厚度 Thickness of Floor Slab (excluding plaster) (毫米 mm)	30/F	150, 200	150, 200

第7座機電樓層平面圖 BLOCK 7 — ELECTRICAL & MECHANICAL FLOOR PLAN



比例尺SCALE: 0米(M) 5米(M)

每個住宅單位的層與層之間的高度：不適用。
 每個住宅單位的樓板（不包括灰泥）的厚度：不適用。
 因住宅物業的較高樓層的結構牆的厚度遞減，較高樓層的內部面積，一般比較低樓層的內部面積稍大。

The floor-to-floor height of each residential property : Not applicable.
 The thickness of the floor slabs (excluding plaster) of each residential property : Not applicable.
 The internal areas of the residential properties on the upper floors will generally be slightly larger than those on the lower floors because of the reducing thickness of the structural walls on the upper floors.

備註：平面圖所列數字為以毫米標示之建築結構尺寸。
 Note: The dimensions of floor plans are all structural dimensions in millimeter.

名詞及簡稱之圖例 LEGENDS OF THE TERMS AND ABBREVIATIONS

A/C	= 冷氣機平台 Air-conditioning platform
B	= 浴室 Bathroom
B.W.	= 窗台 Bay window
Bal.	= 露台 Balcony
Bal. Cover	= 下層露台上蓋 Top of balcony cover
Br.	= 睡房 Bedroom
Din.	= 飯廳 Dining room
Dn.	= 落 Down
Elec. Room	= 電力房 Electricity room
ELV Duct	= 超低壓電線槽位 Extra-low voltage electricity duct
ELV Room	= 超低壓電力房 Extra-low voltage electricity room
F.R.	= 平台 Flat roof
H.R.	= 喉轆 Hose reel
Kit.	= 廚房 Kitchen
Liv.	= 客廳 Living room
Logistic Rm.	= 物流房 Logistic room
M.B.	= 主人房浴室 Master bathroom
M.Br.	= 主人房 Master bedroom
P.D.	= 管道槽位 Pipe duct
Riser Duct	= 電線槽位 Riser duct
R.S. & M.R.R.	= 垃圾及物料回收房 Refuse storage & material recovery room
St.	= 儲物間 Store
Top of B.W.	= 下層窗台頂 Top of bay window
U.P.	= 工作平台 Utility platform
U.P. Cover	= 下層工作平台上蓋 Top of utility platform cover
W.C.	= 廁所 Washing chamber
W.M.C.	= 水錶位 Water meter cabinet

住宅物業的平面圖的備註:

1. 部分住宅單位的露台、陽台、工作平台、平台或外牆或設有外露之公用喉管，或外牆裝飾板內藏之公用喉管。
2. 部分住宅單位內之部分天花或有跌級樓板，用以安裝上層之機電設備或配合上層之結構、建築設計及/或裝修設計上的需要。
3. 部分住宅單位內或設有假陣或假天花用以安裝冷氣喉管及/或其他機電設備。

Remarks for the Floor Plans of Residential Properties:

1. Common pipes exposed or enclosed in cladding may be located at the balcony, verandah, utility platform, flat roof or external wall of some residential units.
2. There may be sunken slabs at some parts of the ceiling inside some residential units for the installation of mechanical and electrical services of the floor above or due to the structural, architectural and/or decoration design requirements of the floor above.
3. There may be ceiling bulkheads or false ceiling inside some residential units for the installation of air-conditioning conduits and/or other mechanical and electrical services.

10. 期數的住宅物業的樓面平面圖 FLOOR PLANS OF RESIDENTIAL PROPERTIES IN THE PHASE

第8座地下平面圖 (複式低層) BLOCK 8 — GROUND FLOOR PLAN (LOWER DUPLEX)

第8座地下及1樓A單位及B單位在發展項目落成後進行小型工程或獲《建築物條例》豁免的工程而有所改動。該等改動的大概位置已於本樓面平面圖中作標示。

Flat A and Flat B, G/F & 1/F of Block 8 have been altered by way of minor works or exempted works under the Buildings Ordinance after completion of the Development. The approximate locations of alterations are indicated on this floor plan.

第8座地下及1樓A單位的改動工程包括：

- (A) 部分牆體加厚。
- (B) 原廚房、廁所2及兩個儲物間的間隔牆及門被移除，並以不同尺寸的間隔牆及門改建成儲物間1及廁所2。
- (C) 原睡房1和浴室1之間隔牆及門被移除，並以不同尺寸的間隔牆及門改建成睡房1內的儲物間2及浴室1。
- (D) 原睡房1的間隔牆被移除並以不同尺寸的玻璃間隔牆及趟門取代。

Alteration works for Flat A, G/F & 1/F of Block 8 include:

- (A) Part of the wall was thickened.
- (B) Original partition walls and doors of the kitchen, washing chamber 2 and two stores were demolished. Separate Store 1 and washing chamber 2 were re-constructed by adding partition walls and doors in different dimensions.
- (C) Original partition walls and doors of Bedroom 1 and Bathroom 1 were demolished and altered as a Store 2 and Bathroom 1 inside Bedroom 1 by adding partition walls and doors in different dimensions.
- (D) Original partition wall of Bedroom 1 was demolished and replaced by glass partition wall and sliding door in different dimensions.

第8座地下及1樓B單位的改動工程包括：

- (A) 原睡房1的間隔牆及門被移除並以不同尺寸的玻璃間隔牆及趟門取代。
- (B) 部分牆體加厚。
- (C) 樓梯的原扶手被移除並以不同物料及設計的扶手取代。
- (D) 部分樓梯加闊。
- (E) 樓梯的原扶手被移除。新增間隔牆及隱藏門以提供儲物空間。

Alteration works for Flat B, G/F & 1/F of Block 8 include:

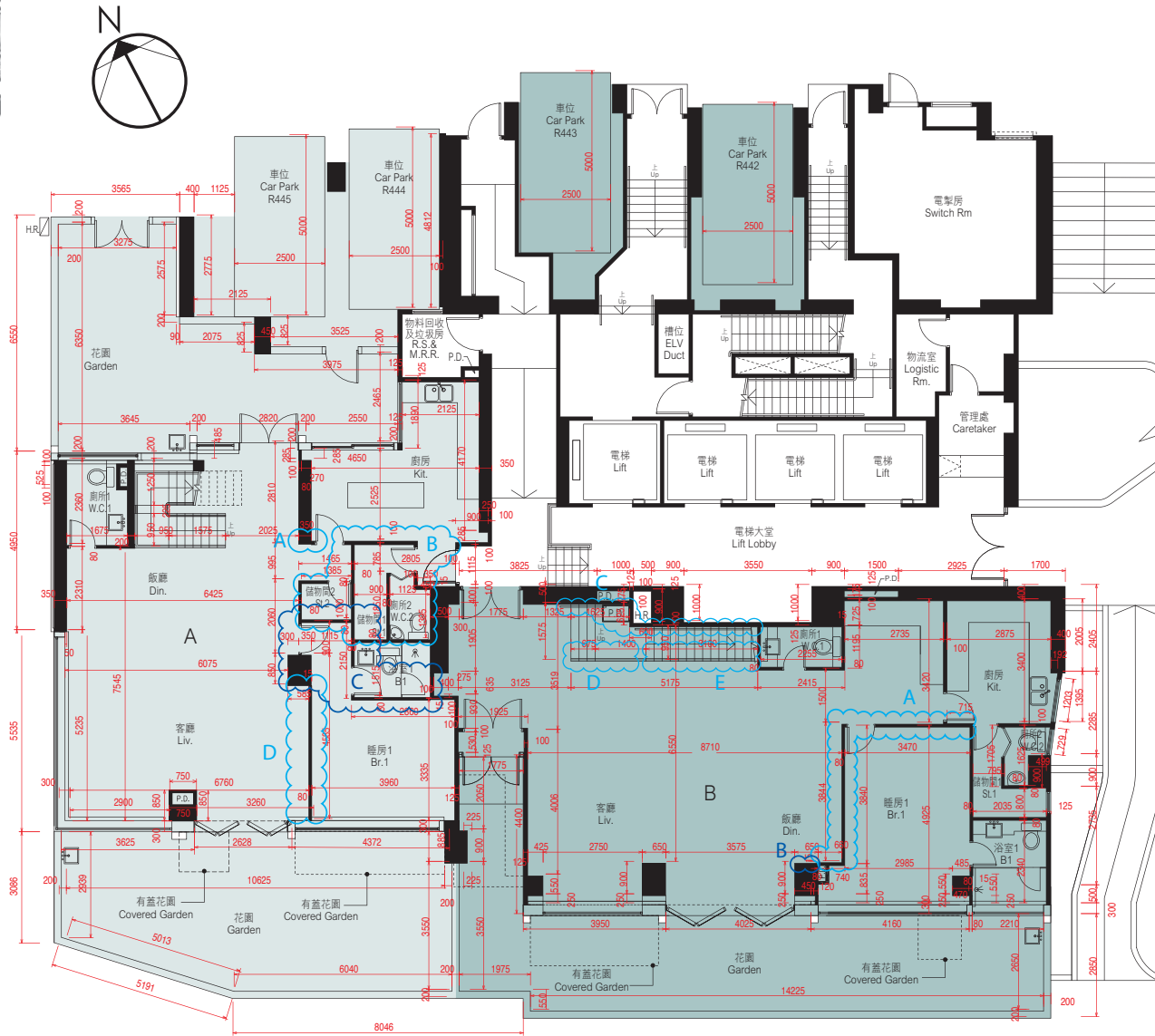
- (A) Original partition walls and door of bedroom 1 were demolished and replaced by glass partition walls and sliding door with different dimensions.
- (B) Part of the wall was thickened.
- (C) Original railing of the staircase was demolished and replaced by railing with different material and design.
- (D) Part of the staircase was widened.
- (E) Original railing of the staircase was removed. Partition wall and concealed door were added to provide storage space.

因住宅物業的較高樓層的結構牆的厚度遞減，較高樓層的內部面積，一般比較低樓層的內部面積稍大。請參閱本售樓說明書第40頁為住宅物業樓面平面圖而設之備註及名詞及簡稱的圖例。

The internal areas of the residential properties on the upper floors will generally be slightly larger than those on the lower floors because of the reducing thickness of the structural walls on the upper floors. Please refer to page 40 of this sales brochure for the remarks and legends of the terms and abbreviations for the floor plans of residential properties.

備註 Note:

1. 平面圖所列數字為以毫米標示之建築結構尺寸。
 2. 以平方呎顯示之面積均依據1平方米=10.764平方呎換算，並四捨五入至整數。
1. The dimensions of floor plans are all structural dimensions in millimeter.
2. Areas in square feet are converted at a rate of 1 square metre to 10.764 square feet and rounded to the nearest integer.



比例尺 SCALE: 0米(M) 5米(M)

註釋 Explanatory Note:

貼鄰住客停車位的面積(不計算入停車位面積或實用面積): 地下A單位為9.301平方米(100平方呎), 地下B單位為6.763平方米(73平方呎)。

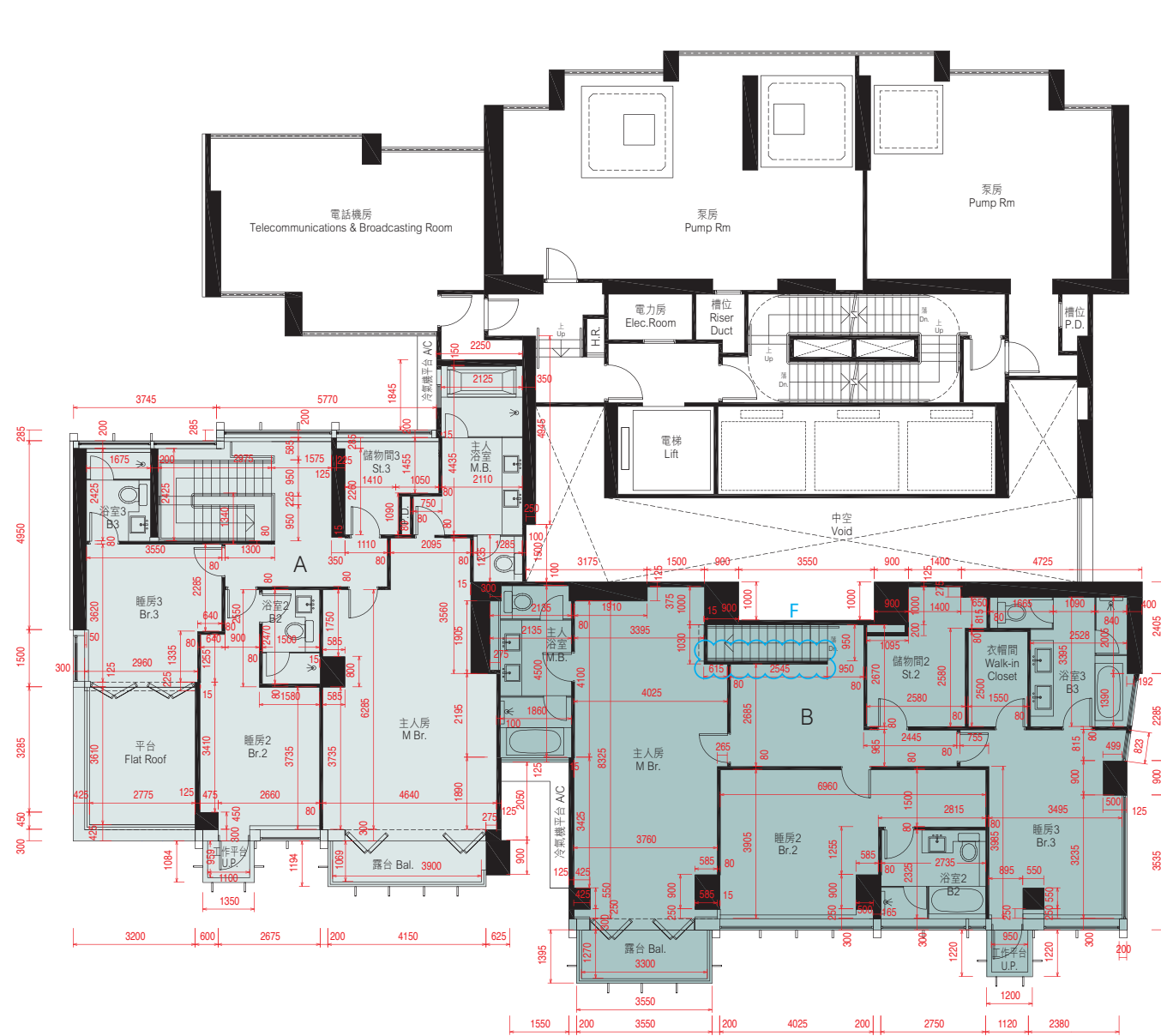
由工作平台或露台遮蓋之花園面積(已計算入花園面積): 地下A單位為6.418平方米(69平方呎), 地下B單位為6.416平方米(69平方呎)。根據屋宇署規定, 該面積最少兩邊不可圍封。

Area adjoining residential parking space (not included in the area of parking space or saleable area): Flat A on G/F is 9.301 sq.m. (100 sq.ft.), Flat B on G/F is 6.763 sq.m. (73 sq.ft.).

Area of garden covered by utility platform or balcony (included in the area of garden): Flat A on G/F is 6.418 sq.m. (69 sq.ft.), Flat B on G/F is 6.416 sq.m. (69 sq.ft.). Such areas shall be unenclosed on at least 2 sides as required by Buildings Department.

每個住宅物業 Each Residential Property	單位 Unit		
	樓層 Floor		
層與層之間的高度 Floor to Floor Height (毫米 mm)	G/F	3250, 3500	3500
樓板(不包括灰泥)的厚度 Thickness of Floor Slab (excluding plaster) (毫米 mm)	G/F	150, 175, 200, 250	150, 200, 300

第8座1樓平面圖 (複式高層) BLOCK 8 — 1/F FLOOR PLAN (UPPER DUPLEX)



第8座地下及1樓A單位及B單位在發展項目落成後進行小型工程或獲《建築物條例》豁免的工程而有所改動。該等改動的大概位置已於本樓面平面圖中作標示。

Flat A and Flat B, G/F & 1/F of Block 8 have been altered by way of minor works or exempted works under the Buildings Ordinance after completion of the Development. The approximate locations of alterations are indicated on this floor plan.

第8座地下及1樓B單位的改動工程包括：

- (F) 樓梯的原扶手被移除。

Alteration works for Flat B, G/F & 1/F of Block 8 include :

- (F) Original railing of the staircase was removed.

比例尺 SCALE: 0米(M) 5米(M)

備註：平面圖所列數字為以毫米標示之建築結構尺寸。
Note: The dimensions of floor plans are all structural dimensions in millimeter.

因住宅物業的較高樓層的結構牆的厚度遞減，較高樓層的內部面積，一般比較低樓層的內部面積稍大。請參閱本售樓說明書第40頁為住宅物業樓面平面圖而設之備註及名詞及簡稱的圖例。

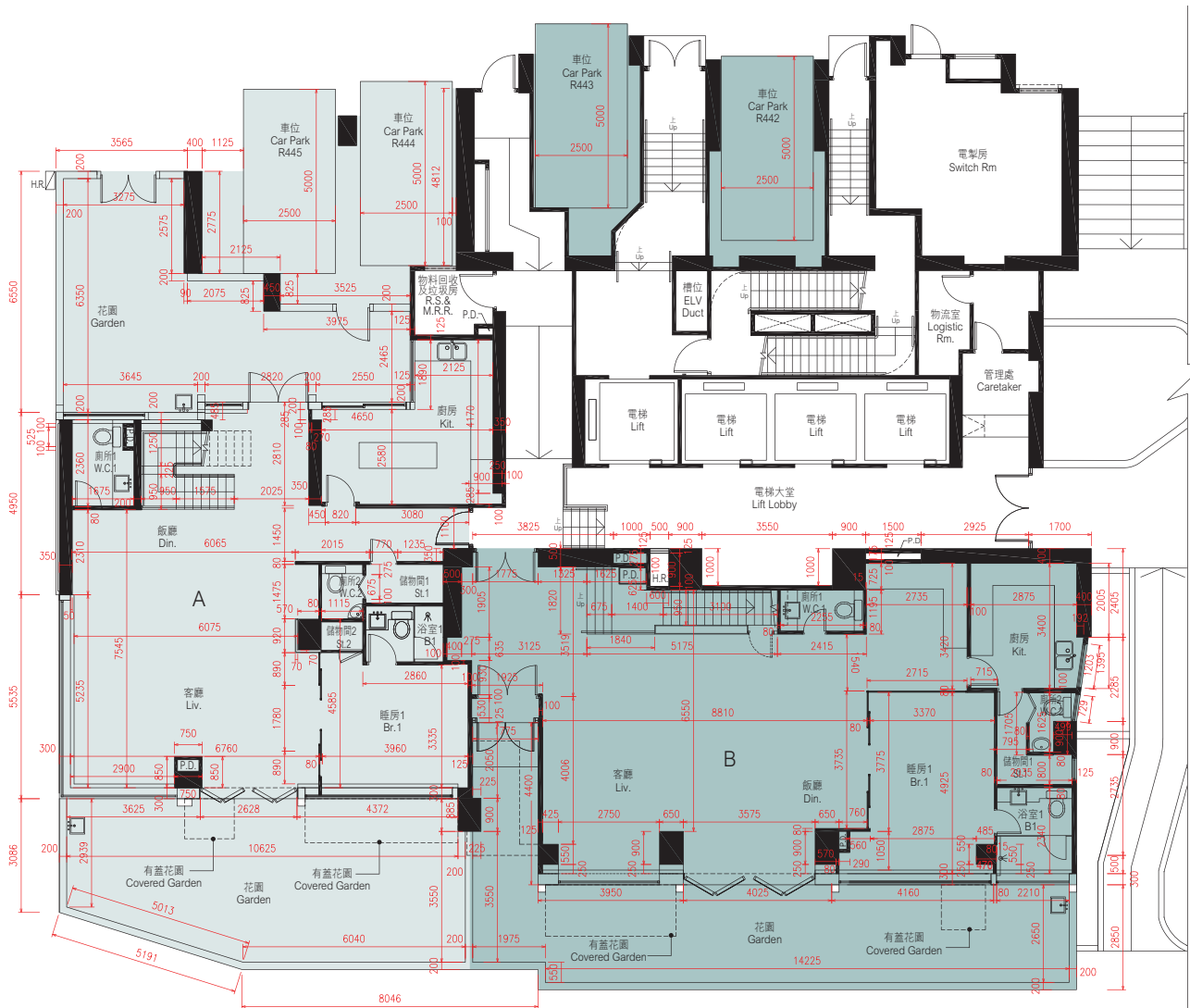
The internal areas of the residential properties on the upper floors will generally be slightly larger than those on the lower floors because of the reducing thickness of the structural walls on the upper floors.

Please refer to page 40 of this sales brochure for the remarks and legends of the terms and abbreviations for the floor plans of residential properties.

每個住宅物業 Each Residential Property	單位 Unit		
	樓層 Floor	A	B
層與層之間的高度 Floor to Floor Height (毫米 mm)	1/F	3250	3250
樓板 (不包括灰泥) 的厚度 Thickness of Floor Slab (excluding plaster) (毫米 mm)	1/F	150, 200, 225, 250	150, 200, 275, 300

10. 期數的住宅物業的樓面平面圖 FLOOR PLANS OF RESIDENTIAL PROPERTIES IN THE PHASE

第8座地下 (複式低層) A單位及B單位之現狀間隔平面圖 AS IS FLOOR PLAN FOR THE GROUND FLOOR (LOWER DUPLEX) OF FLAT A AND FLAT B, BLOCK 8



因住宅物業的較高樓層的結構牆的厚度遞減，較高樓層的內部面積，一般比較低樓層的內部面積稍大。請參閱本售樓說明書第40頁為住宅物業樓面平面圖而設之備註及名詞及簡稱的圖例。

The internal areas of the residential properties on the upper floors will generally be slightly larger than those on the lower floors because of the reducing thickness of the structural walls on the upper floors.

Please refer to page 40 of this sales brochure for the remarks and legends of the terms and abbreviations for the floor plans of residential properties.

比例尺 SCALE: 0米(M) 5米(M)

備註 Note:

1. 平面圖所列數字為以毫米標示之建築結構尺寸。
 2. 以平方呎顯示之面積均依據1平方米=10.764平方呎換算，並四捨五入至整數。
1. The dimensions of floor plans are all structural dimensions in millimeter.
 2. Areas in square feet are converted at a rate of 1 square metre to 10.764 square feet and rounded to the nearest integer.

註釋 Explanatory Note:

貼鄰住客停車位的面積(不計算入停車位面積或實用面積): 地下A單位為9.301平方米(100平方呎), 地下B單位為6.763平方米(73平方呎)。

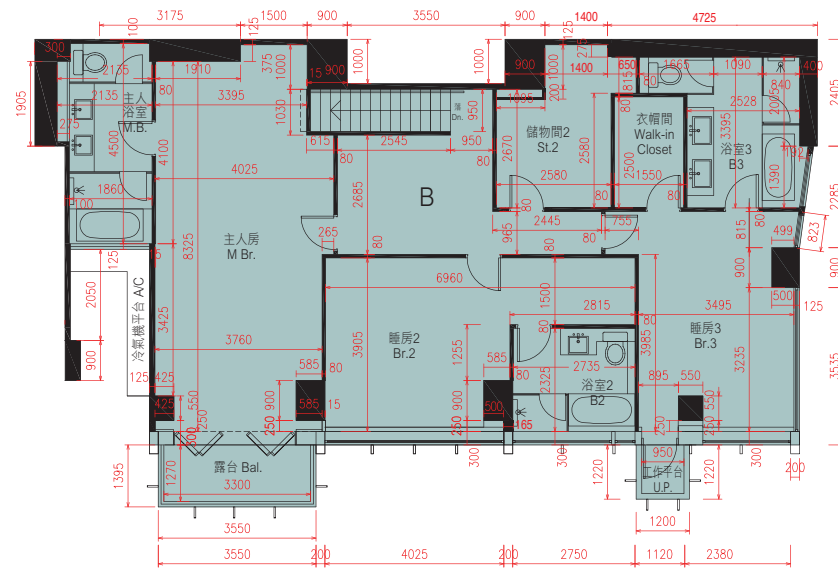
由工作平台或露台遮蓋之花園面積(已計算入花園面積): 地下A單位為6.418平方米(69平方呎), 地下B單位為6.416平方米(69平方呎)。根據屋宇署規定, 該面積最少兩邊不可圍封。

Area adjoining residential parking space (not included in the area of parking space or saleable area): Flat A on G/F is 9.301 sq.m. (100 sq.ft.), Flat B on G/F is 6.763 sq.m. (73 sq.ft.).

Area of garden covered by utility platform or balcony (included in the area of garden): Flat A on G/F is 6.418 sq.m. (69 sq.ft.), Flat B on G/F is 6.416 sq.m. (69 sq.ft.). Such areas shall be unenclosed on at least 2 sides as required by Buildings Department.

每個住宅物業 Each Residential Property	單位 Unit 樓層 Floor	A	B
層與層之間的高度 Floor to Floor Height (毫米 mm)	G/F	3250, 3500	3500
樓板(不包括灰泥)的厚度 Thickness of Floor Slab (excluding plaster) (毫米 mm)	G/F	150, 175, 200, 250	150, 200, 300

第8座1樓平面圖 (複式高層) B單位之現狀間隔平面圖 AS IS FLOOR PLAN FOR 1/F FLOOR PLAN (UPPER DUPLEX) OF FLAT B, BLOCK 8



比例尺 SCALE: 0米(M) 5米(M)

備註：平面圖所列數字為以毫米標示之建築結構尺寸。
Note: The dimensions of floor plans are all structural dimensions in millimeter.

因住宅物業的較高樓層的結構牆的厚度遞減，較高樓層的內部面積，一般比較低樓層的內部面積稍大。
請參閱本售樓說明書第40頁為住宅物業樓面平面圖而設之備註及名詞及簡稱的圖例。

The internal areas of the residential properties on the upper floors will generally be slightly larger than those on the lower floors because of the reducing thickness of the structural walls on the upper floors.

Please refer to page 40 of this sales brochure for the remarks and legends of the terms and abbreviations for the floor plans of residential properties.

每個住宅物業 Each Residential Property	單位 Unit 樓層 Floor	B
層與層之間的高度 Floor to Floor Height (毫米 mm)	1/F	3250
樓板 (不包括灰泥) 的厚度 Thickness of Floor Slab (excluding plaster) (毫米 mm)	1/F	150, 200, 275, 300

10. 期數的住宅物業的樓面平面圖 FLOOR PLANS OF RESIDENTIAL PROPERTIES IN THE PHASE

第8座3樓平面圖 BLOCK 8 — 3/F FLOOR PLAN



比例尺SCALE: 0米(M) 5米(M)

因住宅物業的較高樓層的結構牆的厚度遞減，較高樓層的內部面積，一般比較低樓層的內部面積稍大。
請參閱本售樓說明書第40頁為住宅物業樓面平面圖而設之備註及名詞及簡稱的圖例。

The internal areas of the residential properties on the upper floors will generally be slightly larger than those on the lower floors because of the reducing thickness of the structural walls on the upper floors.

Please refer to page 40 of this sales brochure for the remarks and legends of the terms and abbreviations for the floor plans of residential properties.

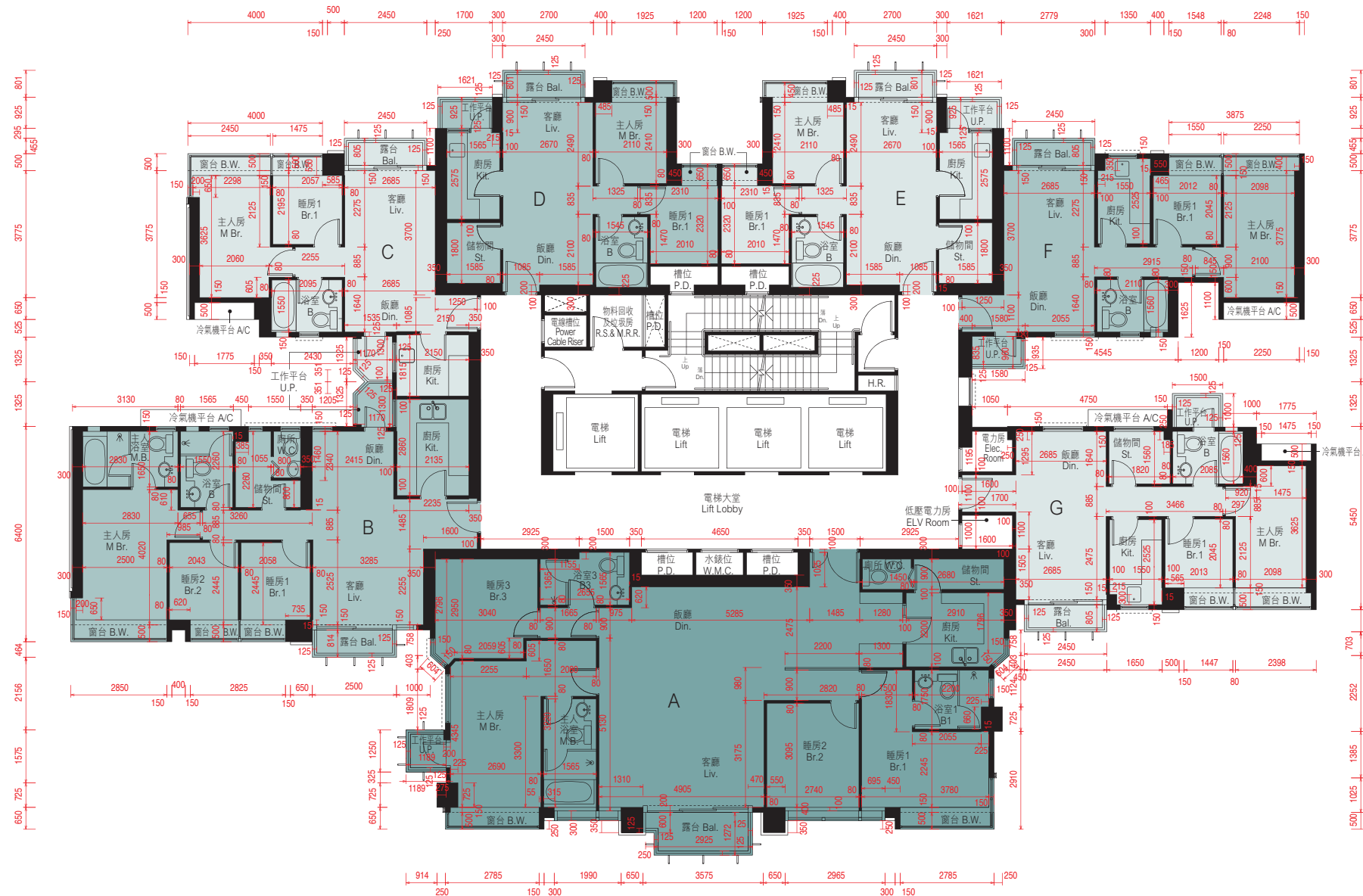
平台空白位置為供維修大廈設備使用的公用地方。

Blank areas on the flat roof are common areas for building facility maintenance.

備註：平面圖所列數字為以毫米標示之建築結構尺寸。
Note: The dimensions of floor plans are all structural dimensions in millimeter.

每個住宅物業 Each Residential Property	樓層 Floor	單位 Unit	A	B	C	D	E	F	G
層與層之間的高度 Floor to Floor Height (毫米 mm)	3/F		3150	3150	3150	3150	3150	3150	3150
樓板(不包括灰泥)的厚度 Thickness of Floor Slab (excluding plaster) (毫米 mm)	3/F		200, 250	150, 175, 200	150, 200	150, 200	150, 200	150, 200	150, 200

第8座5樓 - 6樓, 9樓 - 11樓, 16樓 - 18樓及21樓 - 23樓平面圖 BLOCK 8 — 5/F - 6/F, 9/F - 11/F, 16/F - 18/F & 21/F - 23/F FLOOR PLAN



比例尺SCALE: 0米(M) 5米(M)

因住宅物業的較高樓層的結構牆的厚度遞減，較高樓層的內部面積，一般比較低樓層的內部面積稍大。
請參閱本售樓說明書第40頁為住宅物業樓面平面圖而設之備註及名詞及簡稱的圖例。

The internal areas of the residential properties on the upper floors will generally be slightly larger than those on the lower floors because of the reducing thickness of the structural walls on the upper floors.

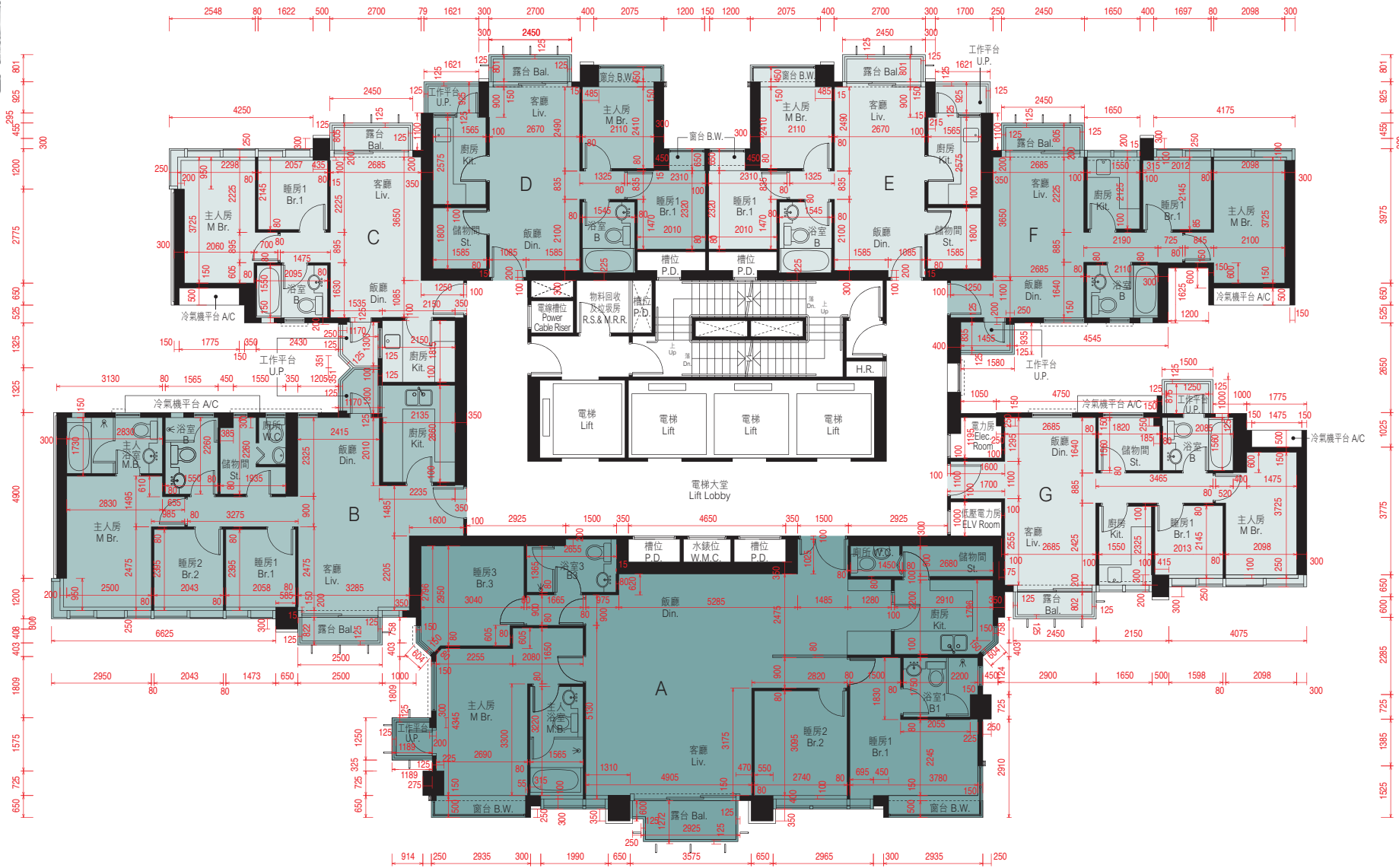
Please refer to page 40 of this sales brochure for the remarks and legends of the terms and abbreviations for the floor plans of residential properties.

備註：平面圖所列數字為以毫米標示之建築結構尺寸。
Note: The dimensions of floor plans are all structural dimensions in millimeter.

每個住宅物業 Each Residential Property	單位 Unit 樓層 Floor	A	B	C	D	E	F	G
層與層之間的高度 Floor to Floor Height (毫米 mm)	5/F, 9/F - 10/F, 16/F - 17/F, 21/F & 22/F	3150	3150	3150	3150	3150	3150	3150
	6/F, 11/F, 18/F & 23/F	2800, 3150	3150	3150	3150	3150	3150	2900, 3150
樓板(不包括灰泥)的厚度 Thickness of Floor Slab (excluding plaster) (毫米 mm)	5/F - 6/F, 9/F - 11/F, 16/F - 18/F & 21/F - 23/F	200, 250	150, 175, 200	125, 150, 200, 325	150, 200	150, 200	150, 200	150, 200

10. 期數的住宅物業的樓面平面圖 FLOOR PLANS OF RESIDENTIAL PROPERTIES IN THE PHASE

第8座7樓, 8樓, 12樓, 15樓, 19樓, 20樓, 25樓及26樓平面圖
BLOCK 8 — 7/F, 8/F, 12/F, 15/F, 19/F, 20/F, 25/F & 26/F FLOOR PLAN



比例尺SCALE: 0米(M) 5米(M)

因住宅物業的較高樓層的結構牆的厚度遞減，較高樓層的內部面積，一般比較低樓層的內部面積稍大。
請參閱本售樓說明書第40頁為住宅物業樓面平面圖而設之備註及名詞及簡稱的圖例。

The internal areas of the residential properties on the upper floors will generally be slightly larger than those on the lower floors because of the reducing thickness of the structural walls on the upper floors.
Please refer to page 40 of this sales brochure for the remarks and legends of the terms and abbreviations for the floor plans of residential properties.

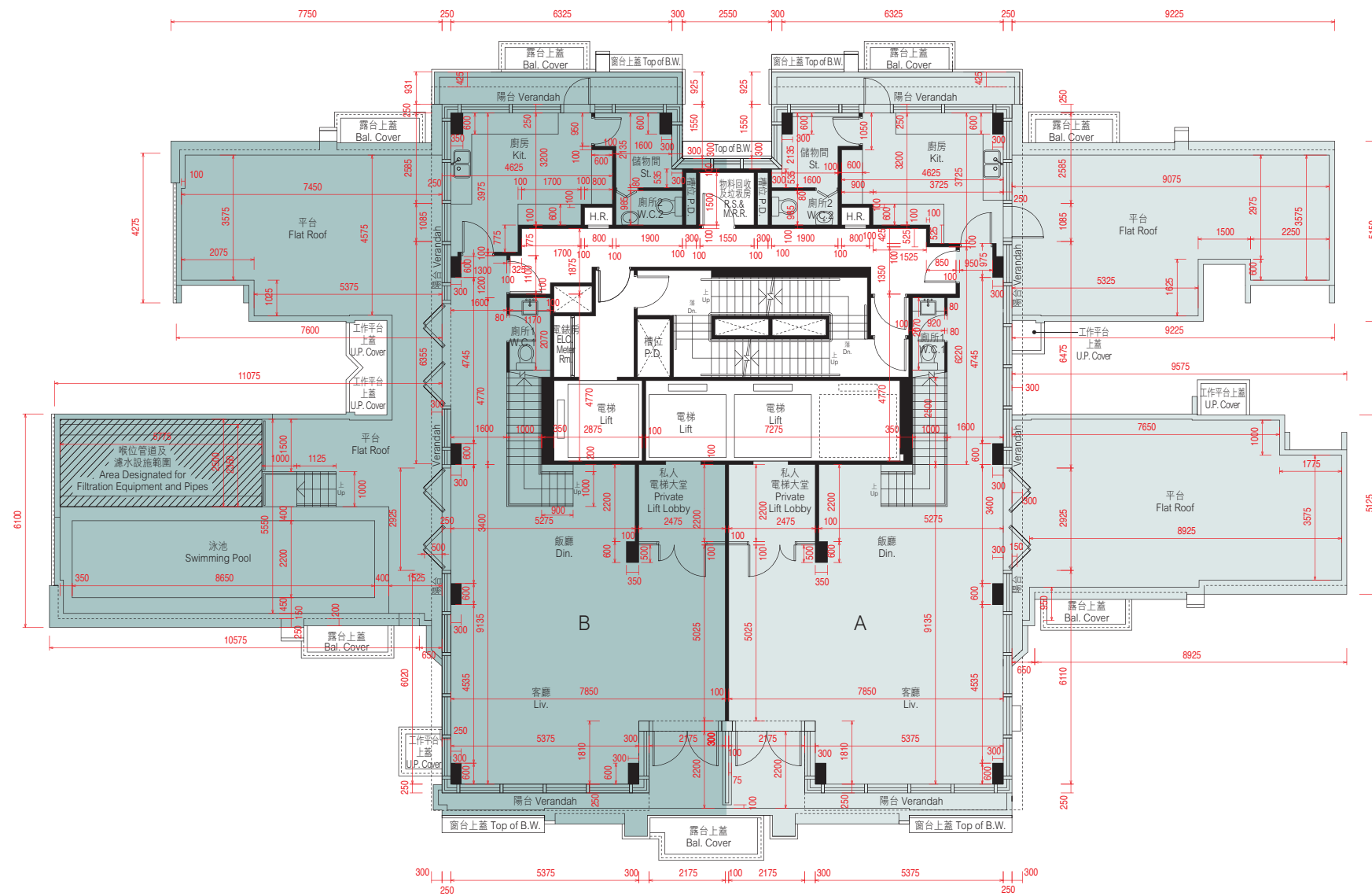
- # 包括800毫米厚之結構轉換層。
- * 包括1100毫米厚之結構轉換層及混凝土填充層。

- # Including 800mm thick transfer plate.
- * Including 1100mm thick transfer plate and mass concrete fill.

備註：平面圖所列數字為以毫米標示之建築結構尺寸。
Note: The dimensions of floor plans are all structural dimensions in millimeter.

每個住宅物業 Each Residential Property	單位 Unit	樓層 Floor						
		A	B	C	D	E	F	G
層與層之間的高度 Floor to Floor Height (毫米 mm)	7/F, 12/F, 19/F & 25/F	2800, 3150	3150	3150	3150	3150	3150	2900, 3150
	8/F, 15/F & 20/F	2800, 3150	3150	3150	3150	2800, 3150	3150	3150
	26/F	3900 [#] , 4200 [*]	3350, 3550, 3900 [#] , 4200 [*]	3500, 3900 [#] , 4200 [*]	3900 [#] , 4200 [*]	3900 [#] , 4200 [*]	3500, 3900 [#] , 4200 [*]	3500, 3900 [#] , 4200 [*]
樓板 (不包括灰泥) 的厚度 Thickness of Floor (excluding plaster) (毫米 mm)	7/F, 12/F, 19/F & 25/F	200, 250	150, 175, 200	150, 200	150, 200	150, 200	150, 200	150, 200
	8/F, 15/F & 20/F	200, 250	150, 175, 200	150, 200	150, 200	150, 200	150, 200	150, 200
	26/F	200, 800, 1100	150, 200, 250, 800, 1100	150, 200, 250, 800, 1100	200, 800, 1100	200, 800, 1100	150, 200, 250, 800, 1100	150, 200, 250, 800, 1100

第8座27樓平面圖 (複式低層) BLOCK 8 — 27/F FLOOR PLAN (LOWER DUPLEX)



比例尺SCALE: 0米(M) 5米(M)

備註 Note :

1. 平面圖所列數字為以毫米標示之建築結構尺寸。
 2. 以平方呎顯示之面積均依據1平方米=10.764平方呎換算，並四捨五入至整數。
1. The dimensions of floor plans are all structural dimensions in millimeter.
 2. Areas in square feet are converted at a rate of 1 square metre to 10.764 square feet and rounded to the nearest integer.

註釋 Explanatory Note :

已預留作喉位管道及濾水設施之沒有遮蓋的面積(已計算入平台面積)：27樓B單位為13.571平方米(146平方呎)。因住宅物業的較高樓層的結構牆的厚度遞減，較高樓層的內部面積，一般比較低樓層的內部面積稍大。請參閱本售樓說明書第40頁為住宅物業樓面平面圖而設之備註及名詞及簡稱的圖例。

Uncovered area designated for filtration equipment and pipes (included in the area of flat roof): Flat B on 27/F is 13.571 sq.m. (146 sq.ft.).

The internal areas of the residential properties on the upper floors will generally be slightly larger than those on the lower floors because of the reducing thickness of the structural walls on the upper floors.

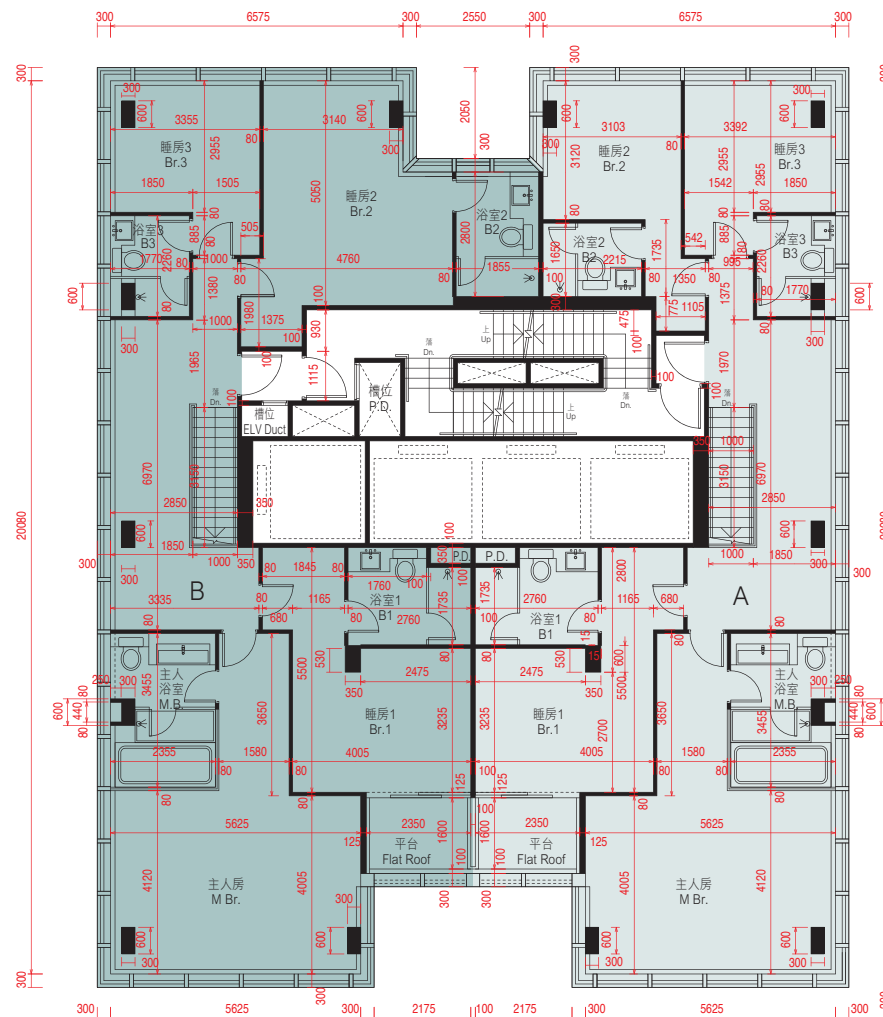
Please refer to page 40 of this sales brochure for the remarks and legends of the terms and abbreviations for the floor plans of residential properties.

每個住宅物業 Each Residential Property	單位 Unit		
	樓層 Floor		
層與層之間的高度 Floor to Floor Height (毫米 mm)	27/F	A 3340, 3500	B 3340, 3500
樓板(不包括灰泥)的厚度 Thickness of Floor Slab (excluding plaster) (毫米 mm)	27/F	A 140, 300	B 140, 300



10. 期數的住宅物業的樓面平面圖 FLOOR PLANS OF RESIDENTIAL PROPERTIES IN THE PHASE

第8座28樓平面圖 (複式高層) BLOCK 8 — 28/F FLOOR PLAN (UPPER DUPLEX)



比例尺SCALE: 0米(M) 5米(M)

因住宅物業的較高樓層的結構牆的厚度遞減，較高樓層的內部面積，一般比較低樓層的內部面積稍大。請參閱本售樓說明書第40頁為住宅物業樓面平面圖而設之備註及名詞及簡稱的圖例。

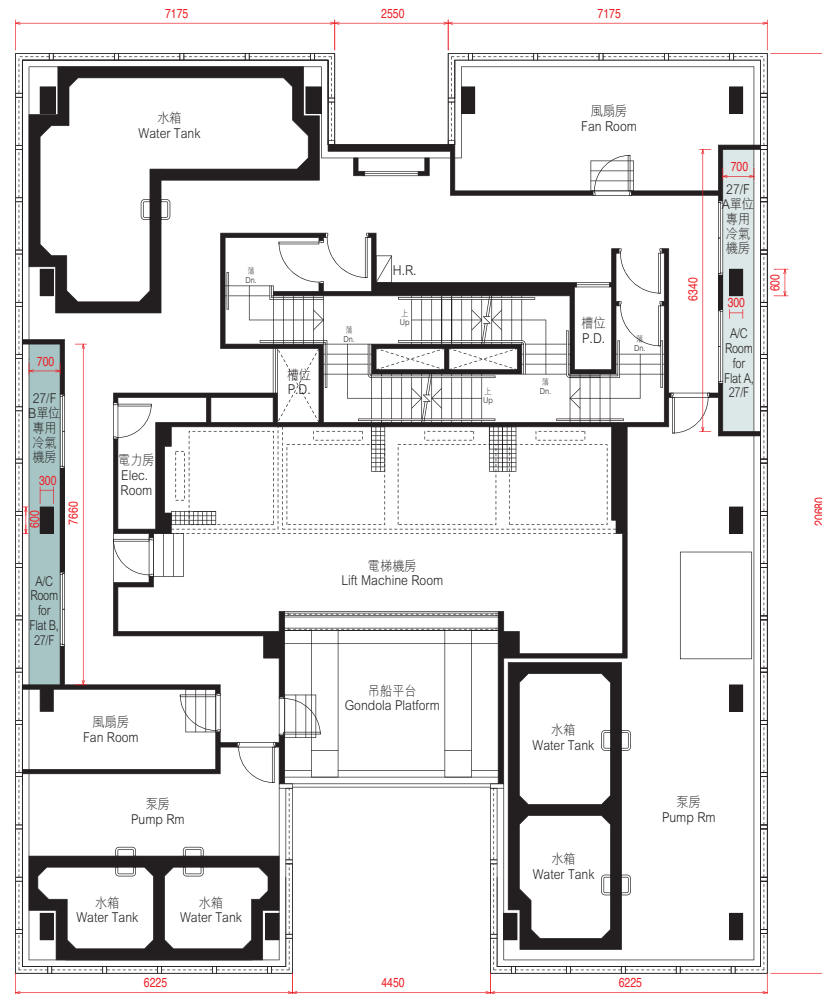
The internal areas of the residential properties on the upper floors will generally be slightly larger than those on the lower floors because of the reducing thickness of the structural walls on the upper floors.

Please refer to page 40 of this sales brochure for the remarks and legends of the terms and abbreviations for the floor plans of residential properties.

備註：平面圖所列數字為以毫米標示之建築結構尺寸。
Note: The dimensions of floor plans are all structural dimensions in millimeter.

每個住宅物業 Each Residential Property	單位 Unit		
	樓層 Floor	A	B
層與層之間的高度 Floor to Floor Height (毫米 mm)	28/F	3500	3500
樓板 (不包括灰泥) 的厚度 Thickness of Floor Slab (excluding plaster) (毫米 mm)	28/F	150, 200	150, 200

第8座機電樓層平面圖 BLOCK 8—ELECTRICAL & MECHANICAL FLOOR PLAN



比例尺SCALE: 0米(M) 5米(M)

每個住宅單位的層與層之間的高度：不適用。
 每個住宅單位的樓板（不包括灰泥）的厚度：不適用。
 因住宅物業的較高樓層的結構牆的厚度遞減，較高樓層的內部面積，一般比較低樓層的內部面積稍大。

The floor-to-floor height of each residential property : Not applicable.
 The thickness of the floor slabs (excluding plaster) of each residential property : Not applicable.
 The internal areas of the residential properties on the upper floors will generally be slightly larger than those on the lower floors because of the reducing thickness of the structural walls on the upper floors.

備註：平面圖所列數字為以毫米標示之建築結構尺寸。
 Note: The dimensions of floor plans are all structural dimensions in millimeter.

名詞及簡稱之圖例 LEGENDS OF THE TERMS AND ABBREVIATIONS

A/C	= 冷氣機平台 Air-conditioning platform
B	= 浴室 Bathroom
B.W.	= 窗台 Bay window
Bal.	= 露台 Balcony
Bal. Cover	= 下層露台上蓋 Top of balcony cover
Br.	= 睡房 Bedroom
Din.	= 飯廳 Dining room
Dn.	= 落 Down
Elec. Room	= 電力房 Electricity room
ELV Duct	= 超低壓電線槽位 Extra-low voltage electricity duct
ELV Room	= 超低壓電力房 Extra-low voltage electricity room
F.R.	= 平台 Flat roof
H.R.	= 喉轆 Hose reel
Kit.	= 廚房 Kitchen
Liv.	= 客廳 Living room
Logistic Rm.	= 物流房 Logistic room
M.B.	= 主人房浴室 Master bathroom
M.Br.	= 主人房 Master bedroom
P.D.	= 管道槽位 Pipe duct
Riser Duct	= 電線槽位 Riser duct
R.S. & M.R.R.	= 垃圾及物料回收房 Refuse storage & material recovery room
St.	= 儲物間 Store
Top of B.W.	= 下層窗台頂 Top of bay window
U.P.	= 工作平台 Utility platform
U.P. Cover	= 下層工作平台上蓋 Top of utility platform cover
W.C.	= 廁所 Washing chamber
W.M.C.	= 水錶位 Water meter cabinet

住宅物業的平面圖的備註:

1. 部分住宅單位的露台、陽台、工作平台、平台或外牆或設有外露之公用喉管，或外牆裝飾板內藏之公用喉管。
2. 部分住宅單位內之部分天花或有跌級樓板，用以安裝上層之機電設備或配合上層之結構、建築設計及/或裝修設計上的需要。
3. 部分住宅單位內或設有假陣或假天花用以安裝冷氣喉管及/或其他機電設備。

Remarks for the Floor Plans of Residential Properties:

1. Common pipes exposed or enclosed in cladding may be located at the balcony, verandah, utility platform, flat roof or external wall of some residential units.
2. There may be sunken slabs at some parts of the ceiling inside some residential units for the installation of mechanical and electrical services of the floor above or due to the structural, architectural and/or decoration design requirements of the floor above.
3. There may be ceiling bulkheads or false ceiling inside some residential units for the installation of air-conditioning conduits and/or other mechanical and electrical services.