

# 10 發展項目的住宅物業的樓面平面圖 FLOOR PLANS OF RESIDENTIAL PROPERTIES IN THE DEVELOPMENT

在本頁上之備註和圖例適用於全部的「發展項目的住宅物業的樓面平面圖」頁數。

The remarks and legends on this page apply to all pages of "Floor plans of residential properties in the development".

## 樓面平面圖圖例

### Legends of the Floor Plans

A/C	= Air-conditioner Unit 冷氣機
A/C PLATFORM	= Air-conditioner Platform 冷氣機平台
ARCH. FEATURE	= Architectural Feature 建築裝飾
BAL.	= Balcony 露台
B	= Bathroom 浴室
BR	= Bedroom 睡房
DN	= Down 落
E.M.R.	= Electric Meter Room 電錶房
ELV. DUCT	= Extra Low Voltage Duct 低電壓管道
F.S.	= Fire Services Pipe Duct 消防管道
H.R.	= Hose Reel 消防喉轆
LIV/DIN	= Living Room / Dining Room 客廳/飯廳
MBR	= Master Bedroom 主人睡房
P.D.	= Pipe Duct 管道
RC PLINTH FOR A/C	= Reinforced Concrete Plinth for Air-conditioner Unit 冷氣機鋼筋混凝土底座
RS&MRR	= Refuse Storage and Material Recovery Room 垃圾及物料回收室
T.R.S.	= Temporary Refuge Space 臨時庇護處
TEL. DUCT	= Telephone Duct 電話線槽
U.P.	= Utility Platform 工作平台
W.M.C.	= Water Meter Cabinet 水錶櫃
	= Built-in fittings provided in the flats 隨樓附送嵌入式裝置

### 備註：

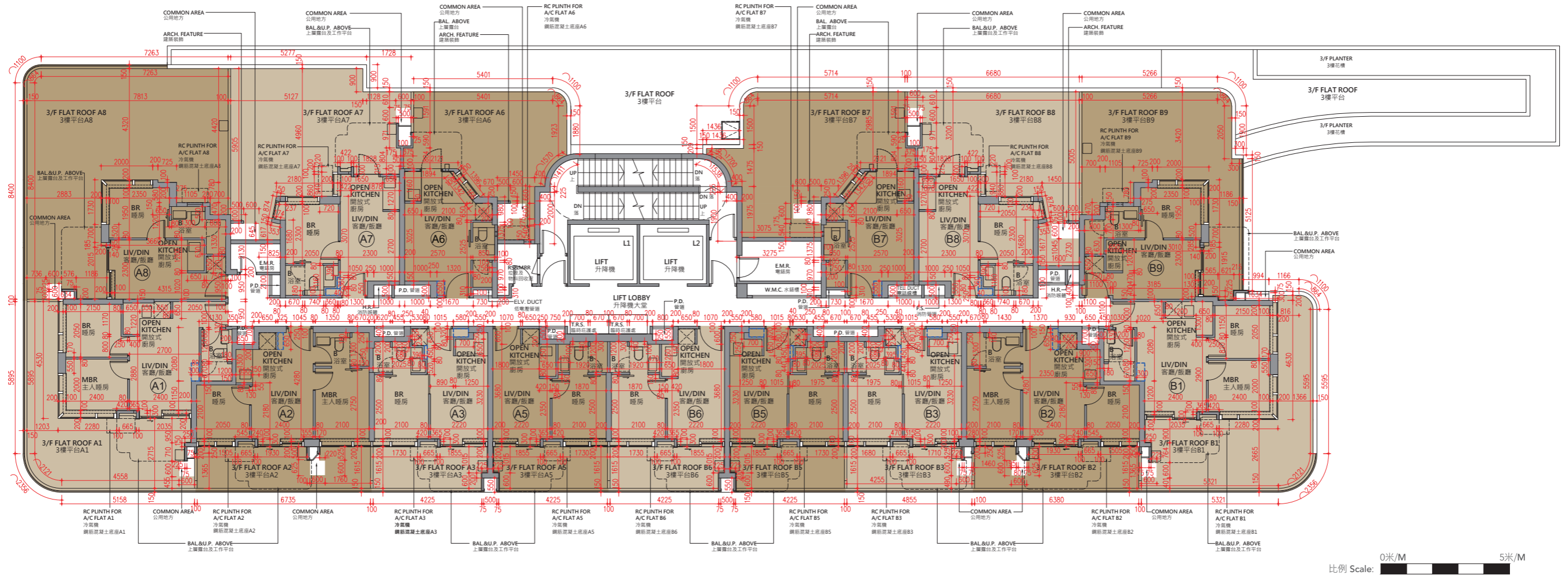
1. 部分住宅物業的露台、工作平台、平台、天台或外牆或設有外露之公用喉管，或外牆裝飾板內藏之公用喉管。
2. 部分住宅物業內之部分天花或有跌級樓板，用以安裝上層之機電設備或配合上層之結構、建築設計及/或裝修設計上的需要。
3. 部分住宅物業內或設有假陣或假天花用以安裝冷氣喉管及/或其他機電設備。
4. 平面圖所列之數字為以毫米標示之建築結構尺寸。
5. 各住宅物業的樓面平面圖內所展示之裝置及設備的圖標如浴缸、洗手盆、座廁、淋浴間、洗滌盆、櫃(如有)等乃根據最新經批准的建築圖則擬備，其形狀、尺寸、比例或與實際提供的裝置及設備存在差異，僅供示意及參考之用。

### Remarks:

1. Common pipes exposed or enclosed in cladding may be located at the balcony, utility platform, flat roof, roof or external wall of some residential properties.
2. There may be sunken slabs at some parts of the ceiling inside some residential properties for the installation of mechanical and electrical services of the floor above or due to the structural, architectural and/or decoration design requirements of the floor above.
3. There may be ceiling bulkheads or false ceiling inside some residential properties for the installation of air-conditioning conduits and/or other mechanical and electrical services.
4. The dimensions of the floor plans are all structural dimensions in millimeter.
5. Those icons of fittings and fitments shown on the floor plans of residential properties like bathtubs, wash basins, water closets, shower cubicles, sink units, cabinets (if any) etc. are prepared in accordance with the latest approved building plans. Their shapes, dimensions, scales may be differed from the fittings and fitments actually provided and they are for indication and reference only.

# 10 發展項目的住宅物業的樓面平面圖 FLOOR PLANS OF RESIDENTIAL PROPERTIES IN THE DEVELOPMENT

3樓平面圖  
3/F Floor Plan



0米/M 5米/M  
比例 Scale:

- 備註: 1. 平面圖所列的數字為以毫米標示之建築結構尺寸。  
2. 平台空白位置為供維修大廈設備使用的公用地方。
- Notes: 1. The dimensions in floor plans are all structural dimensions in millimeter.  
2. Blank areas on the flat roof are common areas for building facility maintenance.

# 10 發展項目的住宅物業的樓面平面圖

## FLOOR PLANS OF RESIDENTIAL PROPERTIES IN THE DEVELOPMENT

每個住宅物業 Each Residential Property	樓層 Floor	單位 Flat						
		A1	A2	A3	A5	A6	A7	A8
層與層之間的高度 (毫米) Floor-to-Floor Height (mm)	3樓 3/F	3325	3325	3325	3325	3325	3325	3325
樓板 (不包括灰泥) 的厚度 (毫米) Thickness of Floor Slab (excluding plaster) (mm)		150	150	150	150	150	150	150

每個住宅物業 Each Residential Property	樓層 Floor	單位 Flat							
		B1	B2	B3	B5	B6	B7	B8	B9
層與層之間的高度 (毫米) Floor-to-Floor Height (mm)	3樓 3/F	3325	3325	3325	3325	3325	3325	3325	3325
樓板 (不包括灰泥) 的厚度 (毫米) Thickness of Floor Slab (excluding plaster) (mm)		150	150	150	150	150	150	150	150

因住宅物業的較高樓層的結構牆的厚度遞減，較高樓層的內部面積，一般比較低樓層的內部面積稍大。

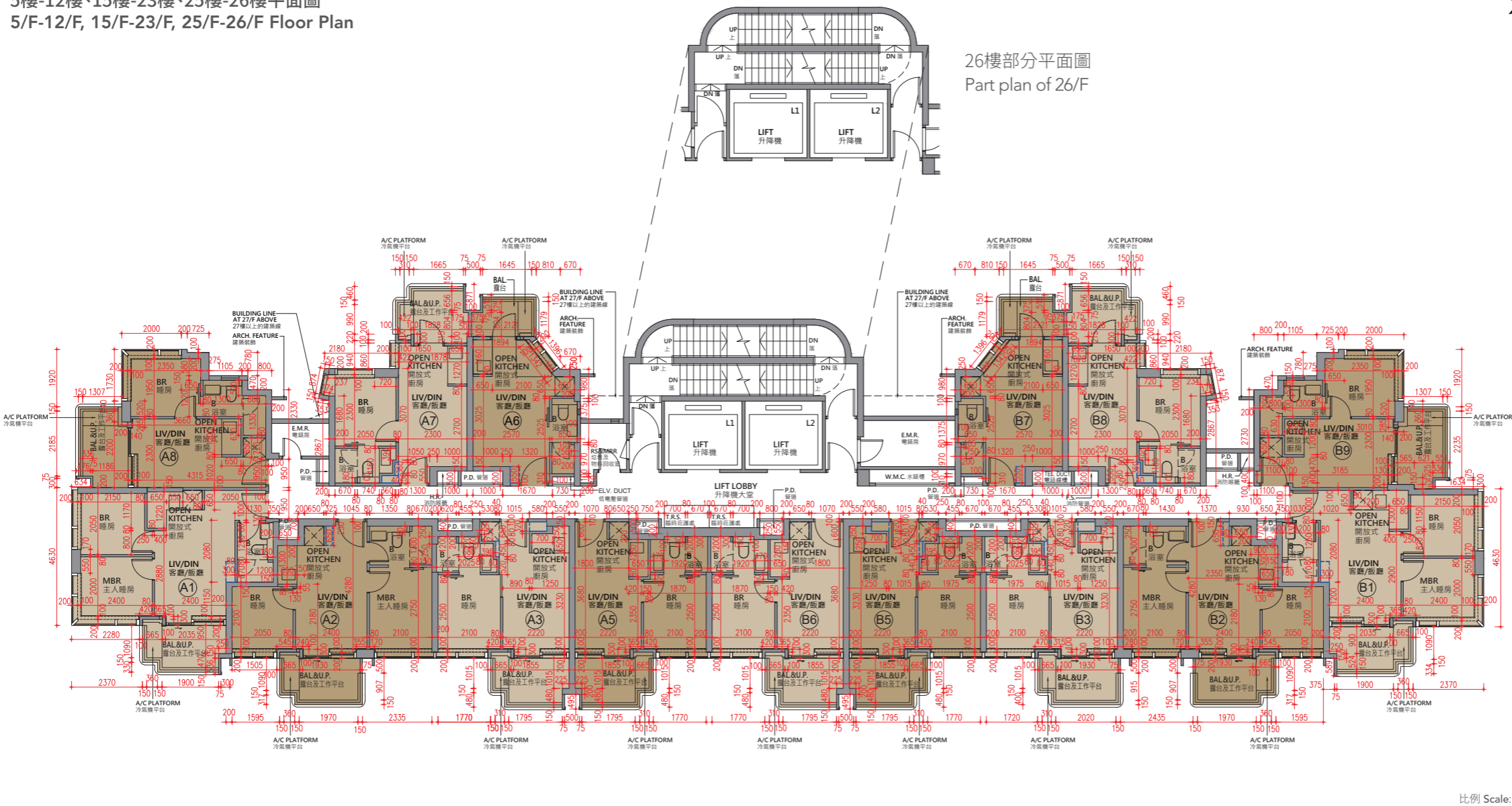
The internal areas of the residential properties on the upper floors will generally be slightly larger than those on the lower floors because of the reducing thickness of the structural walls on the upper floors.

請參閱本售樓說明書第26頁為住宅物業樓面平面圖而設之備註及名詞及簡稱的圖例。

Please refer to page 26 of this sales brochure for the remarks and legends of the terms and abbreviations for the floor plans of residential properties.

# 10 發展項目的住宅物業的樓面平面圖 FLOOR PLANS OF RESIDENTIAL PROPERTIES IN THE DEVELOPMENT

5樓-12樓、15樓-23樓、25樓-26樓平面圖  
5/F-12/F, 15/F-23/F, 25/F-26/F Floor Plan



備註： 1. 平面圖所列的數字為以毫米標示之建築結構尺寸。  
2. 經屋宇署批准的建築圖則內之 26 樓部分平面圖是展示該樓層的豎板數量為 20, 有別於 5 樓 -12 樓、15 樓 -23 樓、25 樓的豎板數量 19。

Notes: 1. The dimensions in floor plans are all structural dimensions in millimeter.  
2. The part plan of 26/F in General Building Plans approved by the Buildings Department is to demonstrate that the number of risers is 20 instead of 19 as on 5/F-12/F, 15/F-23/F, 25/F.

# 10 發展項目的住宅物業的樓面平面圖

## FLOOR PLANS OF RESIDENTIAL PROPERTIES IN THE DEVELOPMENT

每個住宅物業 Each Residential Property	樓層 Floor	單位 Flat						
		A1	A2	A3	A5	A6	A7	A8
層與層之間的高度 (毫米) Floor-to-Floor Height (mm)	5樓-12樓、 15樓-23樓、25樓 5/F-12/F, 15/F-23/F, 25/F	3325	3325	3325	3325	3325	3325	3325
樓板 (不包括灰泥) 的厚度 (毫米) Thickness of Floor Slab (excluding plaster) (mm)		150	150	150	150	150	150	150
層與層之間的高度 (毫米) Floor-to-Floor Height (mm)	26樓 26/F	3500	3500	3500	3500	3500	3500	3325
樓板 (不包括灰泥) 的厚度 (毫米) Thickness of Floor Slab (excluding plaster) (mm)		150	150	150	150	150	150	150

每個住宅物業 Each Residential Property	樓層 Floor	單位 Flat							
		B1	B2	B3	B5	B6	B7	B8	B9
層與層之間的高度 (毫米) Floor-to-Floor Height (mm)	5樓-12樓、 15樓-23樓、25樓 5/F-12/F, 15/F-23/F, 25/F	3325	3325	3325	3325	3325	3325	3325	3325
樓板 (不包括灰泥) 的厚度 (毫米) Thickness of Floor Slab (excluding plaster) (mm)		150	150	150	150	150	150	150	150
層與層之間的高度 (毫米) Floor-to-Floor Height (mm)	26樓 26/F	3500	3500	3500	3500	3500	3500	3500	3325
樓板 (不包括灰泥) 的厚度 (毫米) Thickness of Floor Slab (excluding plaster) (mm)		150	150	150	150	150	150	150	150

因住宅物業的較高樓層的結構牆的厚度遞減，較高樓層的內部面積，一般比較低樓層的內部面積稍大。

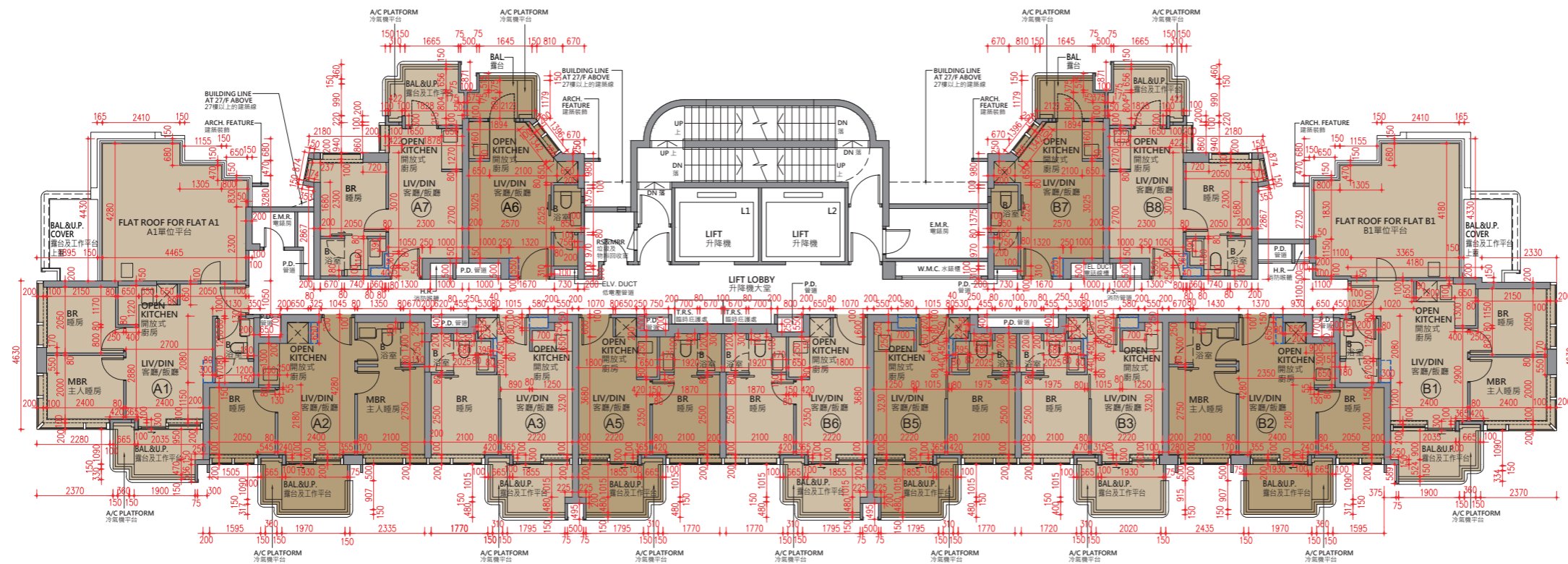
The internal areas of the residential properties on the upper floors will generally be slightly larger than those on the lower floors because of the reducing thickness of the structural walls on the upper floors.

請參閱本售樓說明書第26頁為住宅物業樓面平面圖而設之備註及名詞及簡稱的圖例。

Please refer to page 26 of this sales brochure for the remarks and legends of the terms and abbreviations for the floor plans of residential properties.

# 10 發展項目的住宅物業的樓面平面圖 FLOOR PLANS OF RESIDENTIAL PROPERTIES IN THE DEVELOPMENT

27樓平面圖  
27/F Floor Plan



0米/M 5米/M  
比例 Scale:

備註：平面圖所列的數字為以毫米標示之建築結構尺寸。

Note: The dimensions in floor plans are all structural dimensions in millimeter.

# 10 發展項目的住宅物業的樓面平面圖

## FLOOR PLANS OF RESIDENTIAL PROPERTIES IN THE DEVELOPMENT

每個住宅物業 Each Residential Property	樓層 Floor	單位 Flat					
		A1	A2	A3	A5	A6	A7
層與層之間的高度 (毫米) Floor-to-Floor Height (mm)	27樓 27/F	3700	3700, 4200*	3700, 4200*	3700, 4200*	3700, 4200*	3700, 4200*
樓板 (不包括灰泥) 的厚度 (毫米) Thickness of Floor Slab (excluding plaster) (mm)		200	200, 700*	200, 700*	200, 700*	200, 700*	200, 700*

每個住宅物業 Each Residential Property	樓層 Floor	單位 Flat						
		B1	B2	B3	B5	B6	B7	B8
層與層之間的高度 (毫米) Floor-to-Floor Height (mm)	27樓 27/F	3700	3700, 4200*	3700, 4200*	3700, 4200*	3700, 4200*	3700, 4200*	3700, 4200*
樓板 (不包括灰泥) 的厚度 (毫米) Thickness of Floor Slab (excluding plaster) (mm)		200	200, 700*	200, 700*	200, 700*	200, 700*	200, 700*	200, 700*

\* 包括結構轉換層厚度 (700 毫米)

\* Inclusive of the thickness of transfer plate (700mm)

因住宅物業的較高樓層的結構牆的厚度遞減，較高樓層的內部面積，一般比較低樓層的內部面積稍大。

The internal areas of the residential properties on the upper floors will generally be slightly larger than those on the lower floors because of the reducing thickness of the structural walls on the upper floors.

請參閱本售樓說明書第26頁為住宅物業樓面平面圖而設之備註及名詞及簡稱的圖例。

Please refer to page 26 of this sales brochure for the remarks and legends of the terms and abbreviations for the floor plans of residential properties.