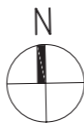
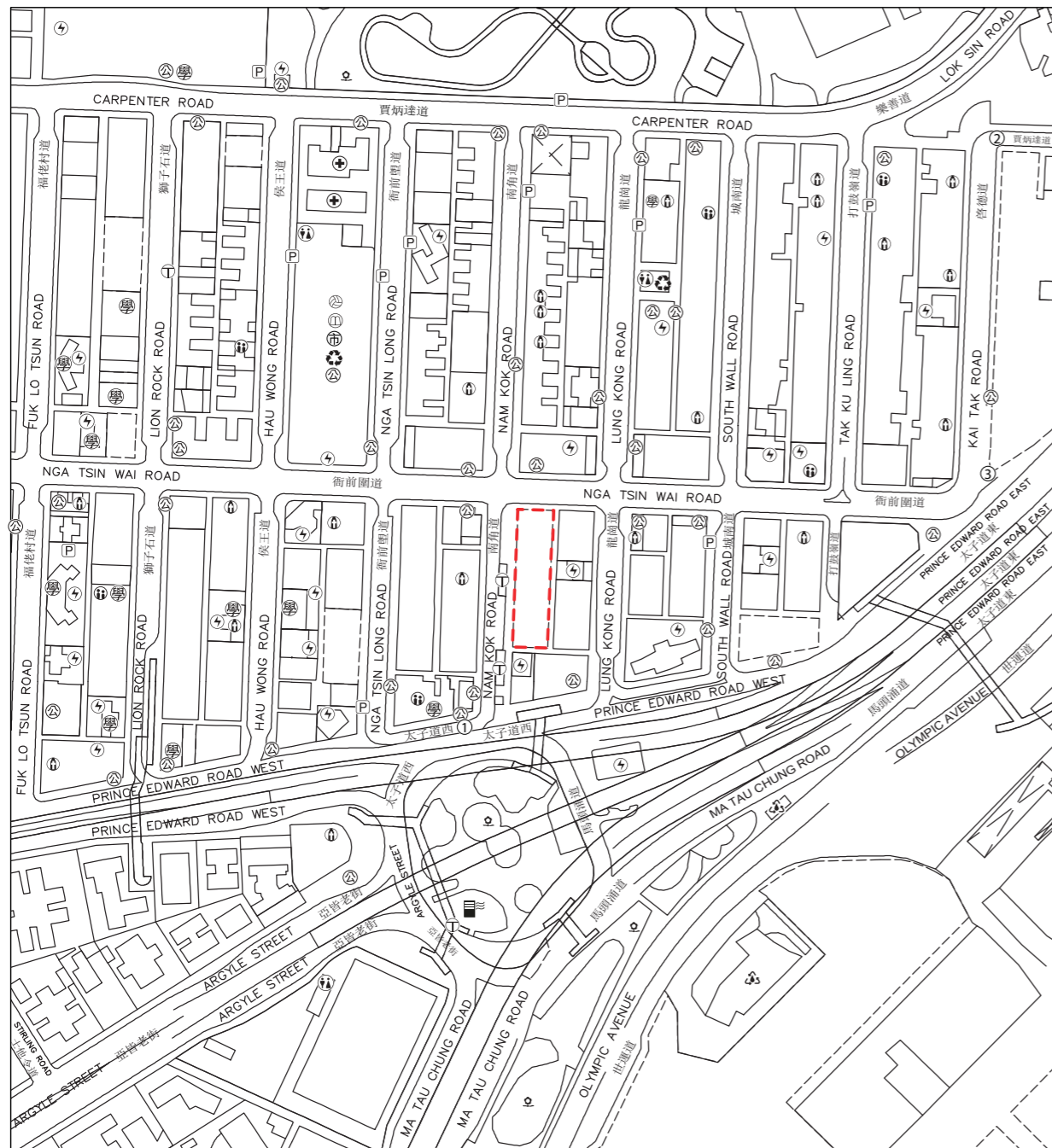


6

發展項目的所在位置圖

LOCATION PLAN OF THE DEVELOPMENT



資料 / 地圖 / 鳥瞰照片由空間數據共享平台提供，香港特別行政區政府為知識產權擁有人。
The Data/Map/Aerial Photograph is/are provided by the CSDI Portal and intellectual property rights are owned by the Government of the HKSAR.

此所在位置圖參考測繪圖編號 T11-NE-A、T11-NE-C、T11-NW-B 及 T11-NW-D，經修正處理。
This location plan is made with reference to Survey Sheet Nos. T11-NE-A, T11-NE-C, T11-NW-B and T11-NW-D with adjustments where necessary.

圖例 NOTATION

- ⚡ 發電廠 (包括電力分站) Power Plant (including Electricity Sub-stations)
- P 公眾停車場 (包括貨車停泊處) Public Carpark (including Lorry Park)
- ♿ 公廁 Public Convenience
- ⚙️ 公用事業設施裝置 Public Utility Installation
- ⛪ 宗教場所 (包括教堂、廟宇及祠堂) Religious Institution (including Church, Temple and Tsz Tong)
- 🎓 學校 (包括幼稚園) School (including Kindergarten)
- 🏠 社會福利設施 (包括老人中心及弱智人士護理院) Social Welfare Facilities (including Elderly Centre and Home for the Mentally Disabled)
- 🌳 公園 Public Park
- 🚰 污水處理廠及設施 Sewage Treatment Works and Facilities
- 🚉 公共交通總站 (包括鐵路車站) Public Transport Terminal (including Rail Station)
- 📖 圖書館 Library
- 🏥 診療所 Clinic
- 🏪 市場 (包括濕貨市場及批發市場) Market (including wet market and wholesale market)
- ♻️ 垃圾收集站 Refuse Collection Point
- 🏊 體育設施 (包括運動場及游泳池) Sports Facilities (including Sports Ground and Swimming Pool)
- 🚇 香港鐵路的通風井 Ventilation Shaft for the Mass Transit Railway

於發展項目的所在位置圖未能顯示之街道的中英文全名：
Street names in Chinese and English not shown in full in the location plan of the Development:

- ① 太子道西 Prince Edward Road West
- ② 賈炳達道 Carpenter Road
- ③ 沙浦道 Sa Po Road

備註：因技術性問題，此位置圖所顯示的範圍超過《一手住宅物業銷售條例》的規定。
Note: Due to technical reasons, this location plan has shown more than the area required under the Residential Properties (First-hand Sales) Ordinance.

發展項目的位置
Location of the Development

比例：0M/米
Scale: 0 250M/米