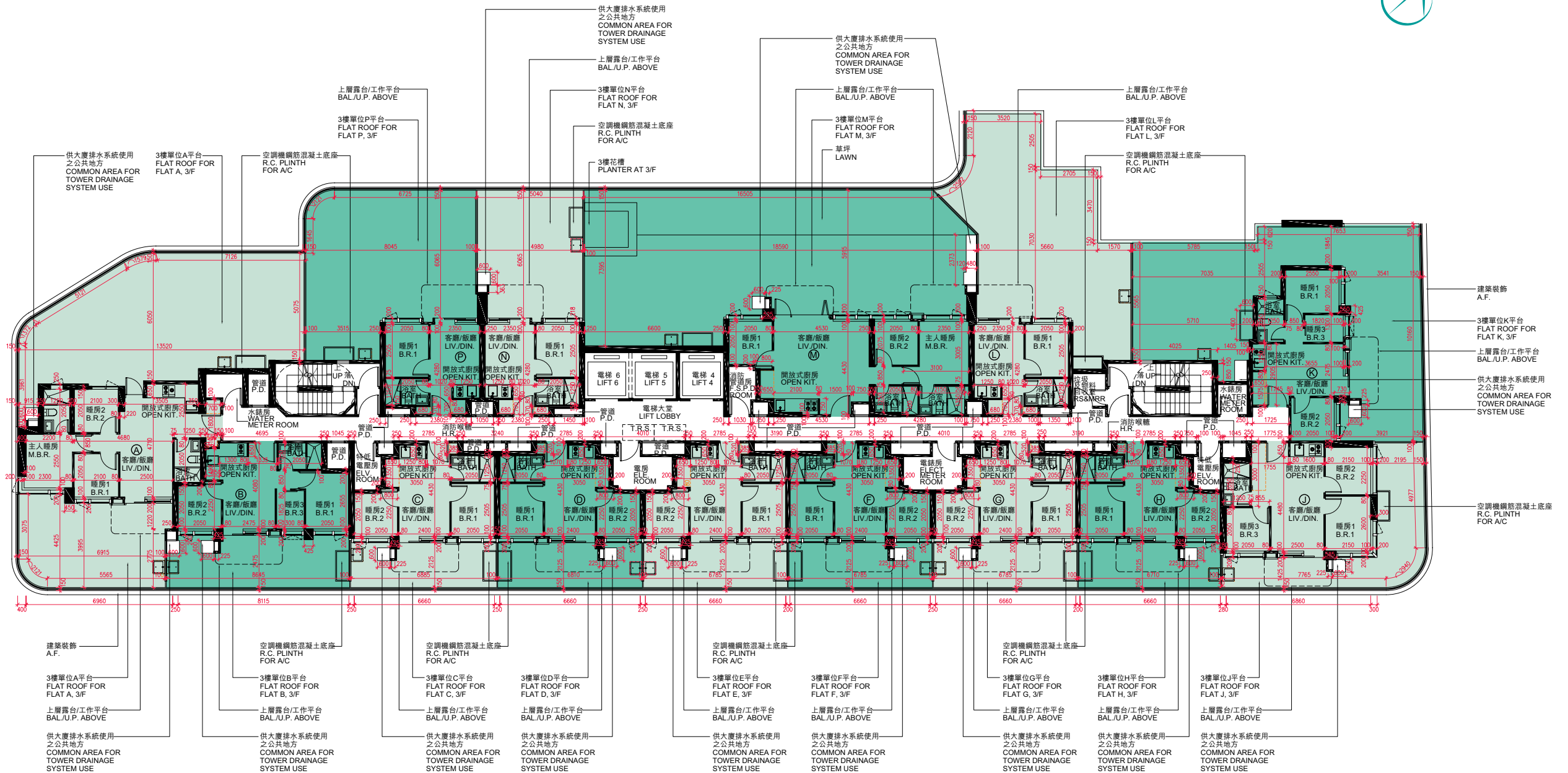


10 期數的住宅物業的樓面平面圖 FLOOR PLANS OF RESIDENTIAL PROPERTIES IN THE PHASE

第2座
TOWER 2

3樓
3/F



備註：平面圖所列數字為以毫米標示之建築結構尺寸。

Note: The dimensions of floor plans are all structural dimensions in millimeter.

比例尺 Scale 0米(m) 10米(m)

10 期數的住宅物業的樓面平面圖

FLOOR PLANS OF RESIDENTIAL PROPERTIES IN THE PHASE

第2座 Tower 2															
每個住宅物業 Each Residential Property	樓層 Floor	單位 Flat													
		A	B	C	D	E	F	G	H	J	K	L	M	N	P
樓板(不包括灰泥)的厚度(毫米) Thickness of Floor Slab (excluding plaster) (mm)	3樓 3/F	125, 160	125, 160	125, 160	125, 160	125, 160	125, 160	125, 160	125, 160	125, 160	125, 160	125, 160	125, 160	125, 160	125, 160
層與層之間的高度(毫米) Floor-to-Floor Height (mm)		2950, 3050, 3300	2950, 3050, 3300	3300	3300	3300	3300	3300	3300	3300	3300	3300	3300	3050, 3300	3300

因住宅物業的較高樓層的結構牆的厚度遞減，較高樓層的內部面積，一般比較低樓層的內部面積稍大。

The internal areas of the residential properties on the upper floors will generally be slightly larger than those on the lower floors because of the reducing thickness of the structural walls on the upper floors.

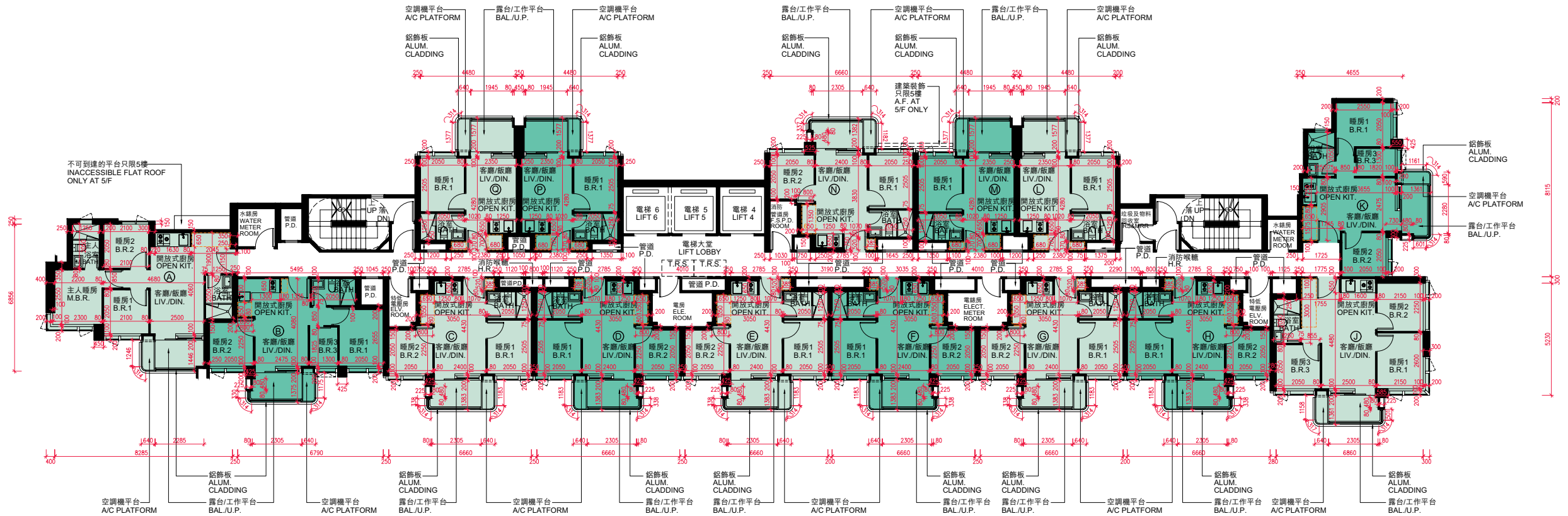
請參閱本售樓說明書第39頁為期數的住宅物業樓面平面圖而設之備註和圖例。

Please refer to page 39 of this sales brochure for the notes and legends for the floor plans of residential properties in the Phase.

10 期數的住宅物業的樓面平面圖 FLOOR PLANS OF RESIDENTIAL PROPERTIES IN THE PHASE

第2座
TOWER 2

5樓 - 12樓、15樓 - 23樓及25樓 - 32樓
5/F - 12/F, 15/F - 23/F & 25/F - 32/F



備註：平面圖所列數字為以毫米標示之建築結構尺寸。
Note : The dimensions of floor plans are all structural dimensions in millimeter.

比例尺 Scale 0米(m) 10米(m)

10 期數的住宅物業的樓面平面圖

FLOOR PLANS OF RESIDENTIAL PROPERTIES IN THE PHASE

第2座 Tower 2																
每個住宅物業 Each Residential Property	樓層 Floor	單位 Flat														
		A	B	C	D	E	F	G	H	J	K	L	M	N	P	Q
樓板(不包括灰泥)的厚度(毫米) Thickness of Floor Slab (excluding plaster) (mm)	5樓 - 12樓、 15樓 - 23樓及 25樓 - 32樓 (不設13樓、 14樓及24樓)	125, 160	125, 160	125, 160	125, 160	125, 160	125, 160	125, 160	125, 160	125, 160	125, 160	125, 160	125, 160	125, 160	125, 160	125, 160
層與層之間的高度(毫米) Floor-to-Floor Height (mm)	5/F - 12/F, 15/F - 23/F & 25/F - 32/F (13/F, 14/F & 24/F omitted)	3300	3300	3300	3300	3300	3300	3300	3300	3300	3300	3300	3300	3300	3300	3300

因住宅物業的較高樓層的結構牆的厚度遞減，較高樓層的內部面積，一般比較低樓層的內部面積稍大。

The internal areas of the residential properties on the upper floors will generally be slightly larger than those on the lower floors because of the reducing thickness of the structural walls on the upper floors.

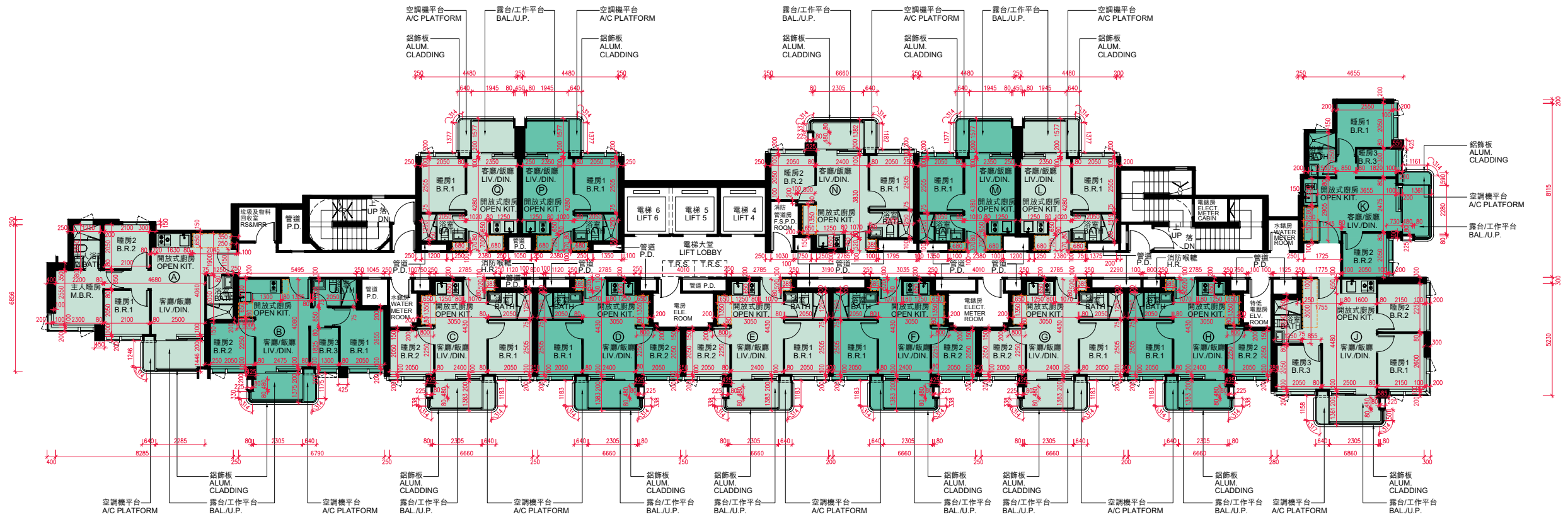
請參閱本售樓說明書第39頁為期數的住宅物業樓面平面圖而設之備註和圖例。

Please refer to page 39 of this sales brochure for the notes and legends for the floor plans of residential properties in the Phase.

10 期數的住宅物業的樓面平面圖 FLOOR PLANS OF RESIDENTIAL PROPERTIES IN THE PHASE

第2座
TOWER 2

33樓
33/F



備註：平面圖所列數字為以毫米標示之建築結構尺寸。
Note : The dimensions of floor plans are all structural dimensions in millimeter.



10 期數的住宅物業的樓面平面圖

FLOOR PLANS OF RESIDENTIAL PROPERTIES IN THE PHASE

第2座 Tower 2																
每個住宅物業 Each Residential Property	樓層 Floor	單位 Flat														
		A	B	C	D	E	F	G	H	J	K	L	M	N	P	Q
樓板(不包括灰泥)的厚度(毫米) Thickness of Floor Slab (excluding plaster) (mm)	33樓 33/F	125, 160	125, 160	125, 160	125, 160	125, 160	125, 160	125, 160	125, 160	125, 160	125, 160	125, 160	125, 160	125, 160	125, 160	125, 160
層與層之間的高度(毫米) Floor-to-Floor Height (mm)		3050, 3300	3150, 3300, 3500	3150, 3300, 3500	3500	3500	3500	3150, 3500	3500	3300	3150, 3300, 3500	3500	3500	3500	3500	3500

因住宅物業的較高樓層的結構牆的厚度遞減，較高樓層的內部面積，一般比較低樓層的內部面積稍大。

The internal areas of the residential properties on the upper floors will generally be slightly larger than those on the lower floors because of the reducing thickness of the structural walls on the upper floors.

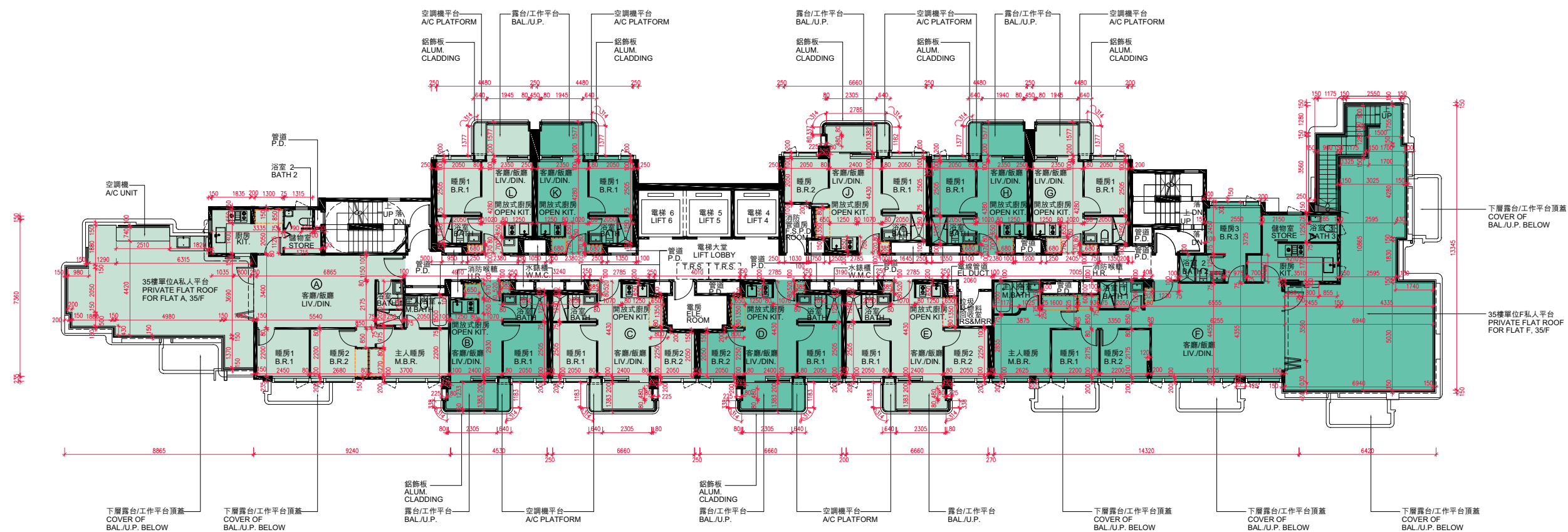
請參閱本售樓說明書第39頁為期數的住宅物業樓面平面圖而設之備註和圖例。

Please refer to page 39 of this sales brochure for the notes and legends for the floor plans of residential properties in the Phase.

10 期數的住宅物業的樓面平面圖 FLOOR PLANS OF RESIDENTIAL PROPERTIES IN THE PHASE

第2座
TOWER 2

35樓
35/F



備註：平面圖所列數字為以毫米標示之建築結構尺寸。
Note : The dimensions of floor plans are all structural dimensions in millimeter.

比例尺 Scale 0米(m) 10米(m)

10 期數的住宅物業的樓面平面圖 FLOOR PLANS OF RESIDENTIAL PROPERTIES IN THE PHASE

第2座 Tower 2												
每個住宅物業 Each Residential Property	樓層 Floor	單位 Flat										
		A	B	C	D	E	F	G	H	J	K	L
樓板(不包括灰泥)的厚度(毫米) Thickness of Floor Slab (excluding plaster) (mm)	35樓 35/F	200	125, 200	125, 200	125, 200	125, 200	200	125, 200	125, 200	125, 200	125, 200	125, 200
層與層之間的高度(毫米) Floor-to-Floor Height (mm)		4000	4000	4000	4000	4000	4000	4000	4000	4000	4000	4000

因住宅物業的較高樓層的結構牆的厚度遞減，較高樓層的內部面積，一般比較低樓層的內部面積稍大。

The internal areas of the residential properties on the upper floors will generally be slightly larger than those on the lower floors because of the reducing thickness of the structural walls on the upper floors.

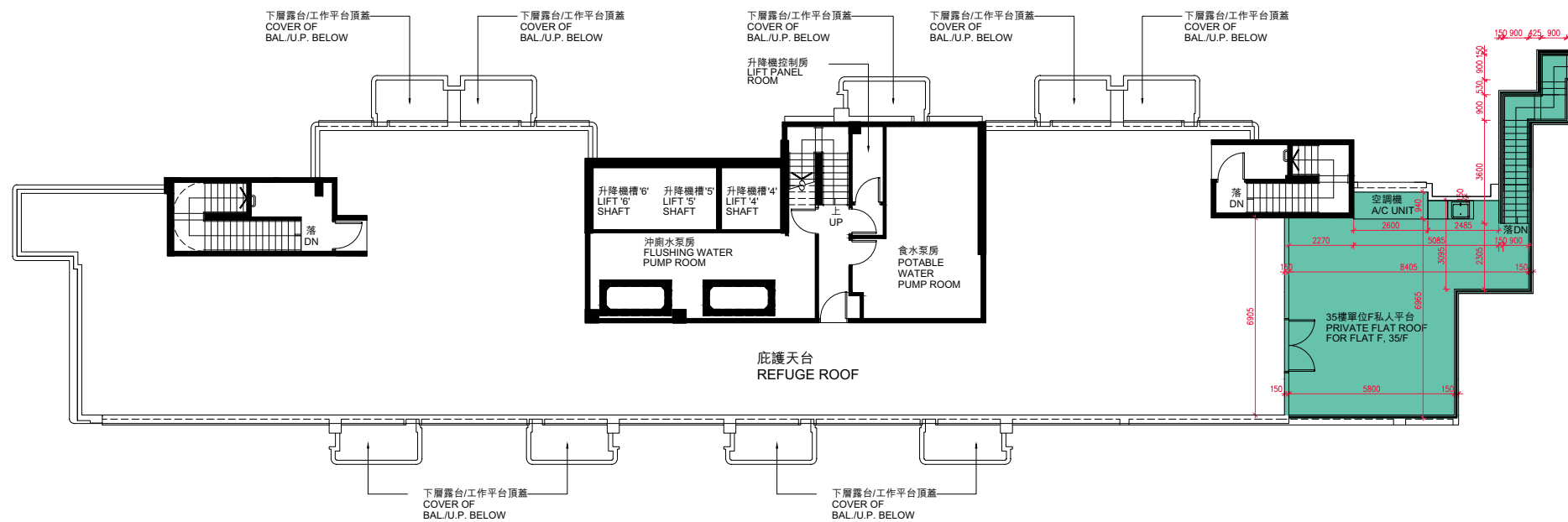
請參閱本售樓說明書第39頁為期數的住宅物業樓面平面圖而設之備註和圖例。

Please refer to page 39 of this sales brochure for the notes and legends for the floor plans of residential properties in the Phase.

10 期數的住宅物業的樓面平面圖 FLOOR PLANS OF RESIDENTIAL PROPERTIES IN THE PHASE

第2座
TOWER 2

天台
Roof



備註：平面圖所列數字為以毫米標示之建築結構尺寸。
Note : The dimensions of floor plans are all structural dimensions in millimeter.

比例尺 Scale 0米(m) 10米(m)

10 期數的住宅物業的樓面平面圖

FLOOR PLANS OF RESIDENTIAL PROPERTIES IN THE PHASE

在本頁上之備註和圖例適用於全部的「期數的住宅物業的樓面平面圖」頁數。

The notes and legends on this page apply to all pages of "Floor plans of residential properties in the Phase".

樓面平面圖圖例

Legends of the Floor Plans

A/C PLATFORM	=	空調機平台 Air Conditioning Platform
A/C UNIT	=	空調機 Air Conditioning Unit
ALUM. CLADDING	=	鋁飾板 Aluminium Cladding
A.F.	=	建築裝飾 Architectural Features
BAL./U.P.	=	露台 / 工作平台 Balcony / Utility Platform
BAL./U.P. ABOVE	=	上層露台 / 工作平台 Balcony / Utility Platform Above
BATH	=	浴室 Bathroom
BATH 1	=	浴室 1 Bathroom 1
BATH 2	=	浴室 2 Bathroom 2
BATH 3	=	浴室 3 Bathroom 3
B.R.1	=	睡房 1 Bedroom 1
B.R.2	=	睡房 2 Bedroom 2
B.R.3	=	睡房 3 Bedroom 3
COVER OF BAL./U.P. BELOW	=	下層露台 / 工作平台頂蓋 Cover of Balcony / Utility Platform Below
DIN.	=	飯廳 Dining room
DN	=	落 Down
ELE. ROOM	=	電房 Electrical Room
ELECT. METER ROOM	=	電錶房 Electrical Meter Room
F.S.P.D. ROOM	=	消防管道房 Fire Services Pipe Duct Room
EL. DUCT	=	電線管道 Electrical Duct
FLUSHING WATER PUMP ROOM	=	沖廁水泵房 Flushing Water Pump Room
ELV. ROOM	=	特低電壓房 Extra Low Voltage Room
H.R.	=	消防喉轆 Hose Reel
KIT.	=	廚房 Kitchen
LIFT PANEL ROOM	=	升降機控制房 Lift Panel Room
LIV.	=	客廳 Living Room
M.BATH	=	主人浴室 Master Bathroom
M.B.R.	=	主人睡房 Master Bedroom
OPEN KIT.	=	開放式廚房 Open Kitchen
P.D.	=	管道 Pipe Duct
POTABLE WATER PUMP ROOM	=	食水泵房 Potable Water Pump Room
R.C. PLINTH FOR A/C	=	空調機鋼筋混凝土底座 Reinforced Concrete Plinth for Air-Conditioner
RS & MRR	=	垃圾及物料回收室 Refuse Storage and Material Recovery Room
STORE	=	儲物室 Store Room
T.R.S.	=	臨時庇護處 Temporary Refuge Space
W.M.C.	=	水錶櫃 Water Meter Cabinet
UP	=	上 Up
	=	隨樓附送之嵌入式裝置 Built-in fittings provided in the flats

備註：

1. 部分樓層外牆設有建築裝飾及/或遮陽裝置。詳細資料請參考最新批准的建築圖則。
2. 根據發展項目的公契的最新擬稿，公共平台及外牆為公用地方。詳細資料請參考最新批准的建築圖則。
3. 部份住宅單位天花高度將會因應結構、建築設計及/或裝修設計上的需要而有差異。
4. 露台、工作平台及空調機平台為不可封閉的地方。
5. 平面圖所列之數字為以毫米標示之建築結構尺寸。
6. 部份單位有非結構預製外牆。買賣合約之實用面積之計算，包括非結構預製外牆，並由非結構預製外牆之外圍起計。

Notes:

1. There may be architectural features and sunshade on external walls of some floors. For details, please refer to the latest approved building plans.
2. Common flat roof and external walls are common areas under the latest draft Deed of Mutual Covenant of the Development.
3. The internal ceiling height within some residential units may vary due to structural, architectural and/or decoration design variations.
4. Balconies, Utility Platforms and Air Conditioning Platform are non-enclosed area.
5. The dimensions of the floor plans are all structural dimensions in millimeter.
6. There are non-structural prefabricated external walls in some residential properties. The Saleable Area as defined in the formal agreement for sale and purchase of a residential property has included the non-structural prefabricated external walls and is measured from the exterior of such non-structural prefabricated external walls.