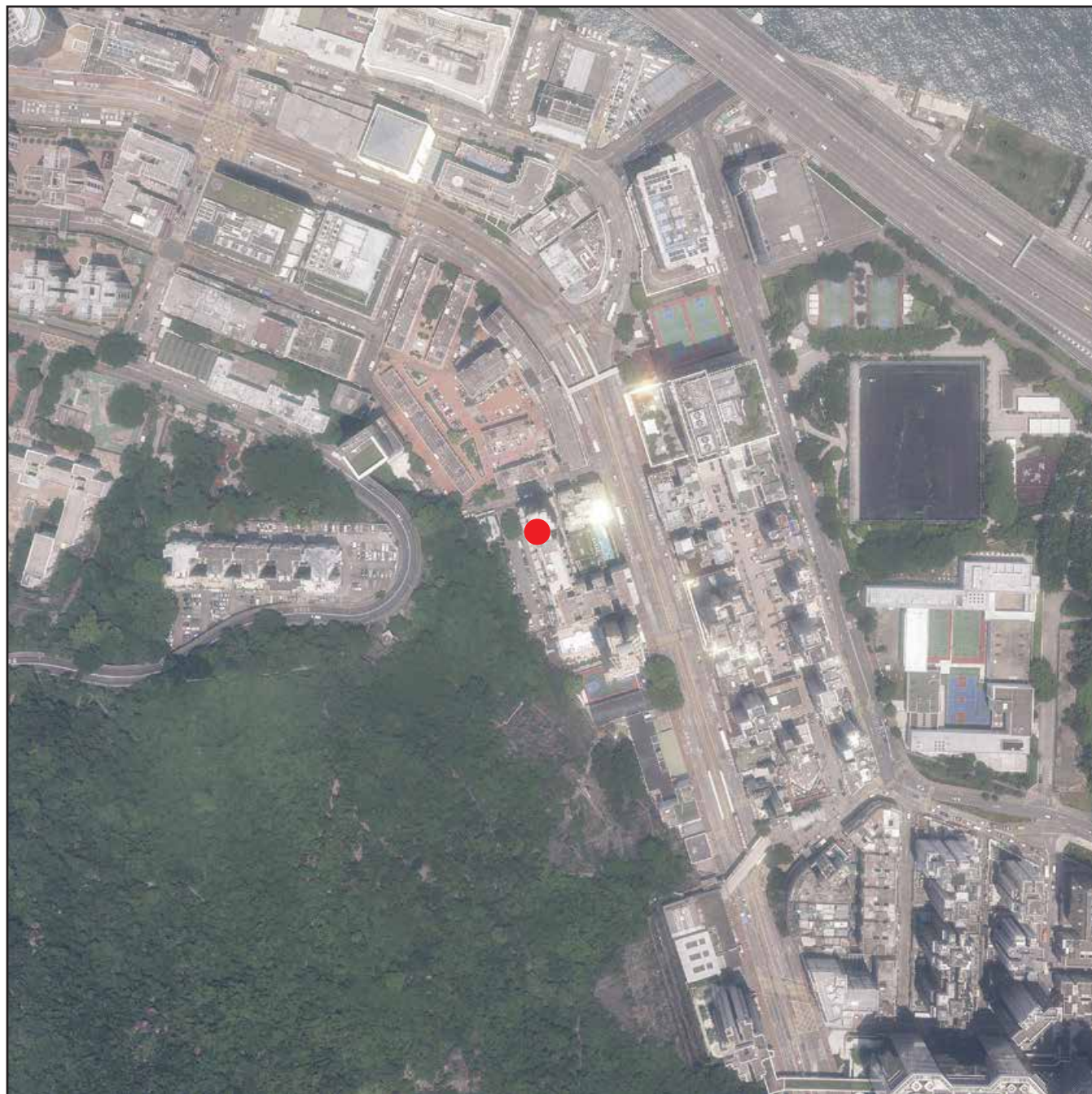


## 7. 發展項目的鳥瞰照片 AERIAL PHOTOGRAPH OF THE DEVELOPMENT



摘錄自地政總署測繪處於2024年8月7日在鰂魚涌6,000呎飛行高度拍攝之鳥瞰照片，編號為E224966C。  
Adopted from part of the aerial photograph taken by the Survey and Mapping Office of Lands Department at a flying height of 6,000 feet in Quarry Bay. Photo No. E224966C dated 7th August 2024.

● 發展項目的位置  
Location of the Development

備註：因技術性問題，此鳥瞰照片所顯示的範圍超過《一手住宅物業銷售條例》的規定。  
Note : Due to technical reasons, this aerial photograph has shown more than the area required under the Residential Properties(First-hand Sales) Ordinance.

香港特別行政區政府地政總署測繪處 © 版權所有，未經許可，不得複製。  
Survey and Mapping Office, Lands Department, The Government of HKSAR © Copyright reserved  
— reproduction by permission only.