

10.發展項目的住宅物業的樓面平面圖

FLOOR PLANS OF RESIDENTIAL PROPERTIES IN THE DEVELOPMENT

在本頁上之備註和圖例適用於全部的「發展項目的住宅物業的樓面平面圖」的頁數。
The notes and legends on this page apply to all pages of “Floor plans of residential properties in the development”.

- 備註：
- 1. 部分住宅單位的露台、工作平台、平台、天台或外牆或設有外露之公用喉管，或外牆裝飾板內藏之公用喉管。
 - 2. 部分住宅單位內之部分天花或有跌級樓板，用以安裝上層之機電設備或配合上層之結構、建築設計及/或裝修設計上的需要。
 - 3. 部分住宅單位內或設有假陣或假天花用以安裝冷氣喉管及/或其他機電設備。
 - 4. 除特別標示外，分體式冷氣機之室外機會安裝於露台或工作平台的假天花之上，或冷氣機平台內。而3樓住宅單位則設於上層露台底、上層工作平台底的天花內或上層冷氣機平台底高位。
 - 5. 各住宅物業的樓面平面圖內所展示之裝置及設備的圖標如浴缸、洗面盆、座廁、淋浴間、洗滌盆、櫃(如有)等乃根據最新經批准的建築圖則擬備，其形狀、尺寸、比例或與實際提供的裝置及設備存在差異，僅供示意及參考之用。

- Notes：
- 1. Common pipes exposed or enclosed in cladding may be located at the balcony, utility platform, flat roof, roof or external wall of some residential units.
 - 2. There may be sunken slabs at some parts of the ceiling inside some residential units for the installation of mechanical and electrical services of the floor above or due to the structural, architectural and/or decoration design requirements of the floor above.
 - 3. There may be ceiling bulkheads or false ceiling inside some residential units for the installation of air-conditioning conduits and/or other mechanical and electrical services.
 - 4. Apart from those indicated, the outdoor unit of split type air-conditioner will be installed above the false ceiling of balcony or utility platform, or at the air-conditioning platform. Those of each 3/F Flats is installed inside the false ceiling at the underside of the balcony or untility platform or high level under the air conditioning platform of the immediate upper floor.
 - 5. Those icons of fittings and fitments shown on the floor plans of residential properties like bathtubs, wash basins, water closets, shower cubicles, sink units, cabinets (if any) etc. are prepared in accordance with the latest approved building plans. Their shapes, dimensions, scales may be differed from the fittings and fitments actually provided and they are for indication and reference only.

樓面平面圖圖例

Legends of Floor Plans

- A/C PLATFORM

A/C PLATFORM ABOVE

A/C FOR FLAT P AT H/L

A/C FOR FLAT Q AT H/L

B.

BAL.

BAL. ABOVE

DN

E.A.D. SHAFT

E.M.C.

F.S.DUCT.

A

B

C

D

E

F

G

H

J

K

L

M

N

P

Q

R

H.R.

LIVING

OPEN KIT.

P.D.

R.S. & M.R.R.

T.D.

U.P.

U.P. ABOVE

W.M.C.
- = 冷氣機平台 Air-conditioning platform

= 上層為冷氣機平台 Air-conditioning platform above

= 單位P冷氣機在高位 Air-conditioning for flat P at high level

= 單位Q冷氣機在高位 Air-conditioning for flat Q at high level

= 浴室 Bathroom

= 露台 Balcony

= 上層為露台 Balcony above

= 落 Down

= 排氣管 Exhaust air duct shaft

= 電錶箱 Electric meter cabinet

= 消防槽位 Fire services duct

= A 單位 Flat A

= B 單位 Flat B

= C 單位 Flat C

= D 單位 Flat D

= E 單位 Flat E

= F 單位 Flat F

= G 單位 Flat G

= H 單位 Flat H

= J 單位 Flat J

= K 單位 Flat K

= L 單位 Flat L

= M 單位 Flat M

= N 單位 Flat N

= P 單位 Flat P

= Q 單位 Flat Q

= R 單位 Flat R

= 消防喉轆 Hose reel

= 客廳 Living room

= 開放式廚房 Open kitchen

= 管槽 Pipe duct

= 垃圾及物料回收房 Refuse storage & material recovery room

= 電訊槽 Telephone duct

= 工作平台 Utility platform

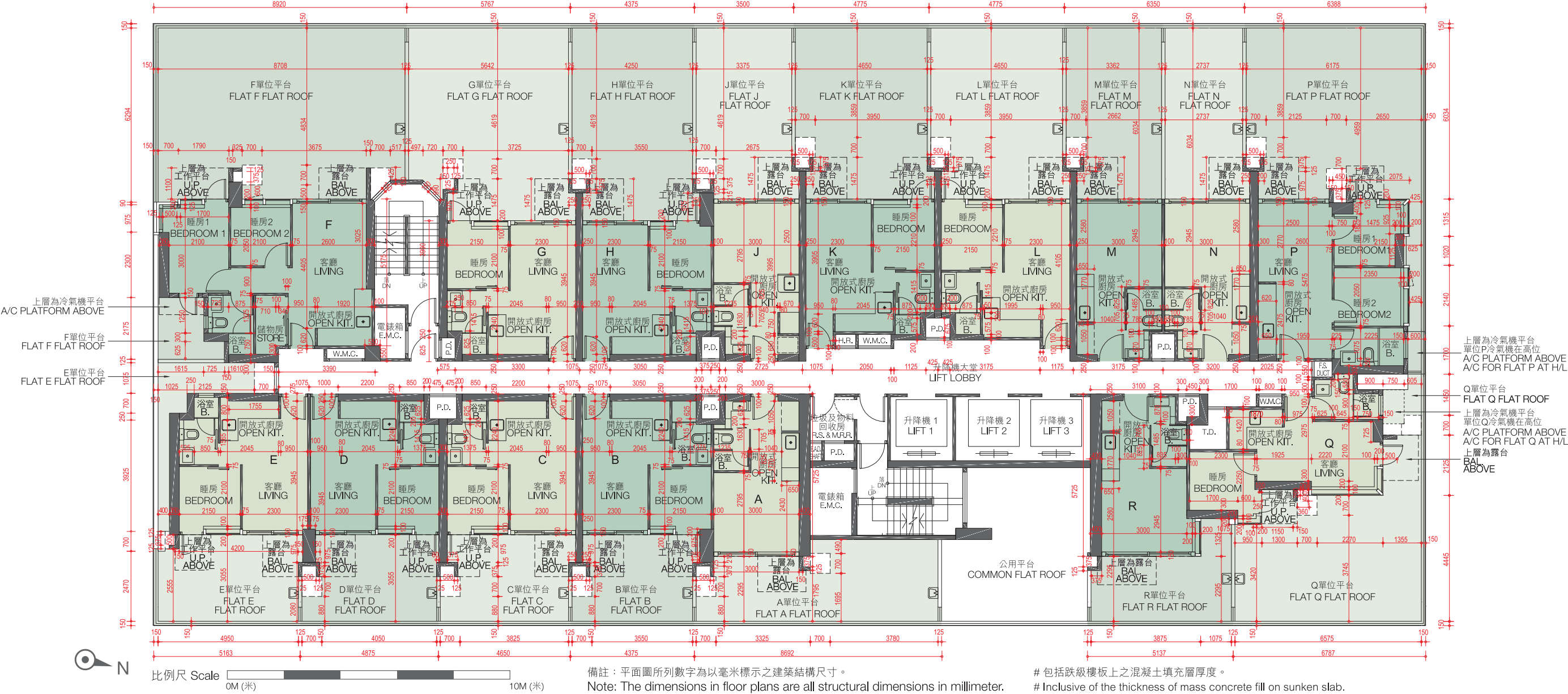
= 上層為工作平台 Utility platform above

= 水錶櫃 Water meter cabinet

= 隨樓附送的嵌入式裝置 Built-in fittings provided in the flats

10. 發展項目的住宅物業的樓面平面圖
FLOOR PLANS OF RESIDENTIAL PROPERTIES IN THE DEVELOPMENT

3樓平面圖 3rd Floor Plan



每個住宅物業 Each Residential Property	樓層 Floor	單位 Flat															
		A	B	C	D	E	F	G	H	J	K	L	M	N	P	Q	R
樓板 (不包括灰泥) 的厚度 (毫米) Thickness of Floor Slab (excluding plaster) (mm)	3/F	150	150	150	150	150	150, 175	150	150	150	150	150	175	175	150	150	150
層與層之間的高度# (毫米) Floor-to-Floor Height# (mm)		3350	3350	3350	3350	3350	3350	3350	3350	3350	3350	3350	3350	3350	3350	3350	3350

平台空白位置為供維修大廈設備使用的公共地方。
Blank areas on the flat roof are common areas for building facility maintenance.

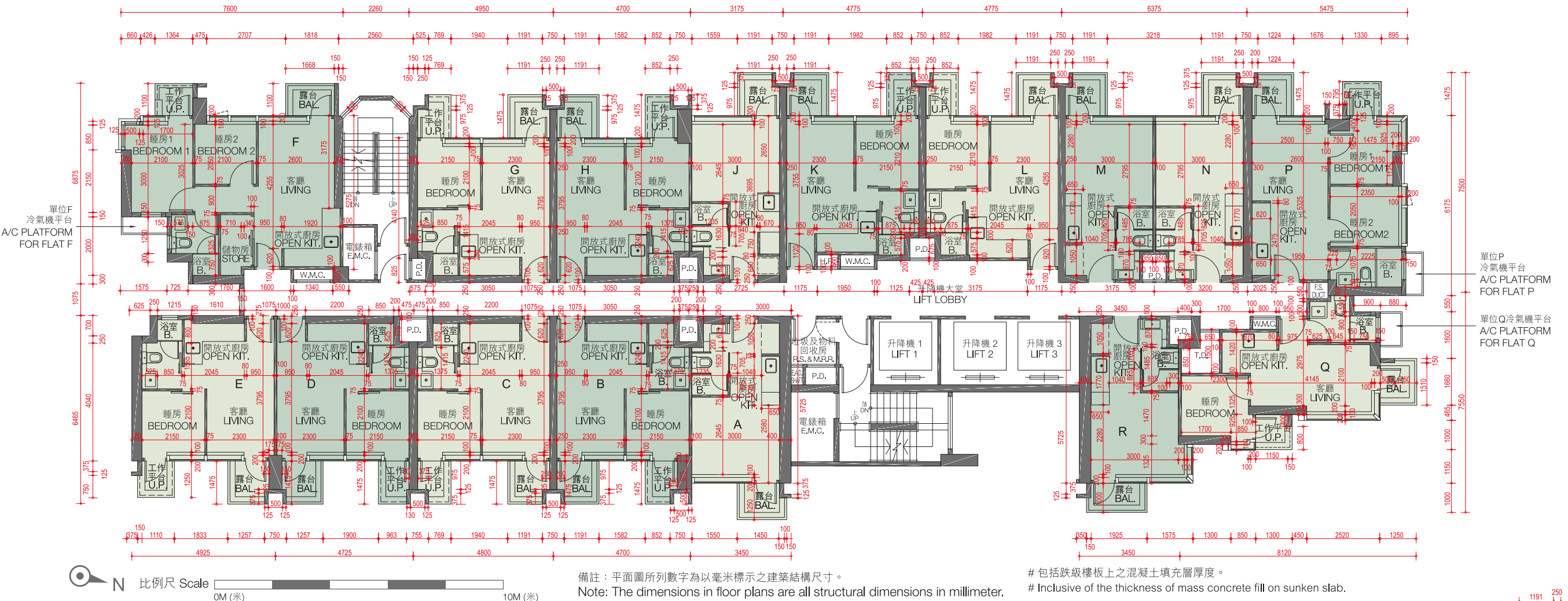
因住宅物業的較高樓層的結構牆的厚度遞減，較高樓層的內部面積，一般比較低樓層的內部面積稍大。
The internal areas of the residential properties on the upper floors will generally be slightly larger than those on the lower floors because of the reducing thickness of the structural walls on the upper floors.

請參閱本售樓說明書第18頁為住宅物業樓面的平面圖而設之備註及圖例。
Please refer to page 18 of this sales brochure for the notes and legends of the floor plans of residential properties.

各住宅物業的樓面平面圖內所展示之裝置及設備的圖標如浴缸、洗面盆、座廁、淋浴間、洗滌盆、櫃(如有)等乃根據最新經批准的建築圖則擬備，其形狀、尺寸、比例或與實際提供的裝置及設備存在差異，僅供示意及參考之用。
Those icons of fittings and fitments shown on the floor plans of residential properties like bathtubs, wash basins, water closets, shower cubicles, sink units, cabinets (if any) etc. are prepared in accordance with the latest approved building plans. Their shapes, dimensions, scales may be differed from the fittings and fitments actually provided and they are for indication and reference only.

10. 發展項目的住宅物業的樓面平面圖
FLOOR PLANS OF RESIDENTIAL PROPERTIES IN THE DEVELOPMENT

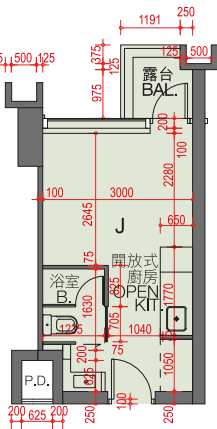
5樓至12樓、15樓至23樓、25樓至33樓及35樓至36樓平面圖
5th to 12th, 15th to 23rd, 25th to 33rd and 35th to 36th Floor Plan



每個住宅物業 Each Residential Property	樓層 Floor	單位 Flat															
		A	B	C	D	E	F	G	H	J	K	L	M	N	P	Q	R
樓板（不包括灰泥）的厚度（毫米） Thickness of Floor Slab (excluding plaster) (mm)	5/F - 12/F, 15/F - 23/F, 25/F - 33/F & 35/F	150	150	150	150	150	150, 175	150	150	150	150	150	175	175	150	150	150
層與層之間的高度#（毫米） Floor-to-Floor Height# (mm)		3350	3350	3350	3350	3350	3350	3350	3350	3350	3350	3350	3350	3350	3350	3350	3350
樓板（不包括灰泥）的厚度（毫米） Thickness of Floor Slab (excluding plaster) (mm)	36/F	150	175	175	175	175	150, 175	150	150	150	175	175	200	200	150	150	150
層與層之間的高度#（毫米） Floor-to-Floor Height# (mm)		3500	3500	3500	3500	3500	3500	3500	3500	3500	3500	3500	3500	3500	3500	3500	3500

6樓至10樓、12樓、15樓至19樓、21樓至22樓、25樓、27樓、29樓、33樓及35樓至36樓J單位之局部平面圖

PART PLAN FOR FLAT J ON 6th TO 10th, 12th, 15th TO 19th, 21st TO 22nd, 25th, 27th, 29th, 33rd AND 35th TO 36th FLOOR



因住宅物業的較高樓層的結構牆的厚度遞減，較高樓層的內部面積，一般比較低樓層的內部面積稍大。
The internal areas of the residential properties on the upper floors will generally be slightly larger than those on the lower floors because of the reducing thickness of the structural walls on the upper floors.

請參閱本售樓說明書第18頁為住宅物業樓面的平面圖而設之備註及圖例。
Please refer to page 18 of this sales brochure for the notes and legends of the floor plans of residential properties.

各住宅物業的樓面平面圖內所展示之裝置及設備的圖標如浴缸、洗面盆、座廁、淋浴間、洗滌盆、櫃(如有)等乃根據最新經批准的建築圖則擬備，其形狀、尺寸、比例或與實際提供的裝置及設備存在差異，僅供示意及參考之用。
Those icons of fittings and fitments shown on the floor plans of residential properties like bathtubs, wash basins, water closets, shower cubicles, sink units, cabinets (if any) etc. are prepared in accordance with the latest approved building plans. Their shapes, dimensions, scales may be differed from the fittings and fitments actually provided and they are for indication and reference only.