

18. 發展項目中的建築物的橫截面圖

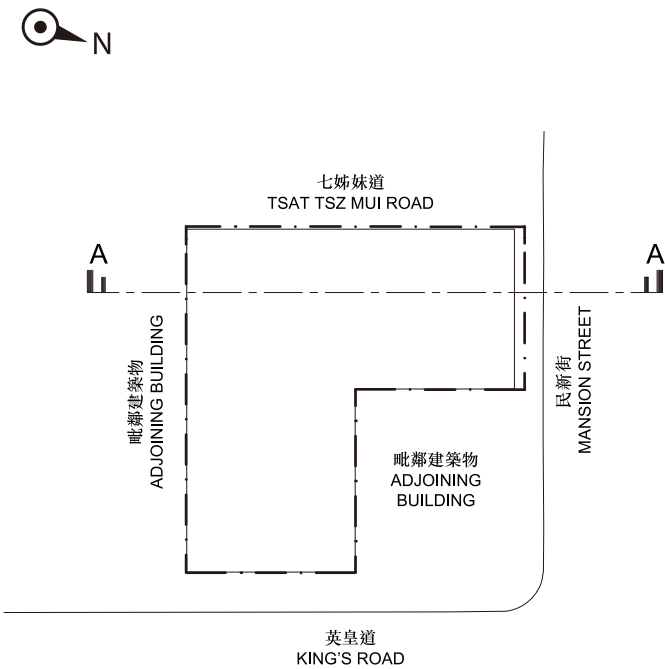
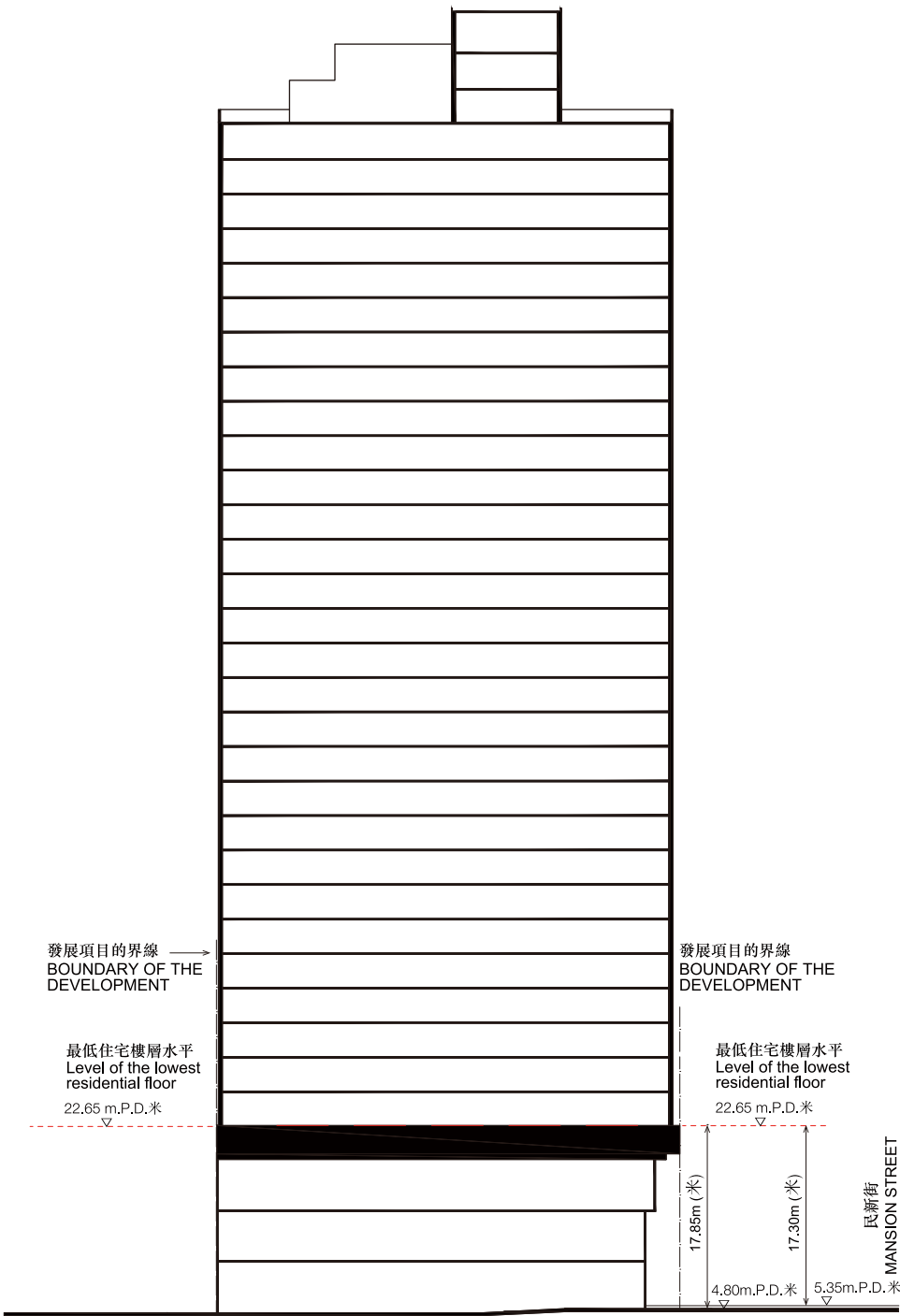
CROSS-SECTION PLAN OF BUILDING IN THE DEVELOPMENT

橫截面圖 A-A
Cross - section Plan A-A

- 1. 毗連建築物的一段民新街為香港主水平基準以上4.80-5.35米。
- 2. 建築物最低住宅樓層水平為香港主水平基準以上22.65米。
- 3. 紅色虛線為最低住宅樓層水平。

- 1. The part of Mansion Street adjacent to the building is 4.80-5.35 metres above Hong Kong Principal Datum.
- 2. The level of the lowest residential floor is 22.65 metres above Hong Kong Principal Datum.
- 3. Red dotted line denotes the level of the lowest residential floor.

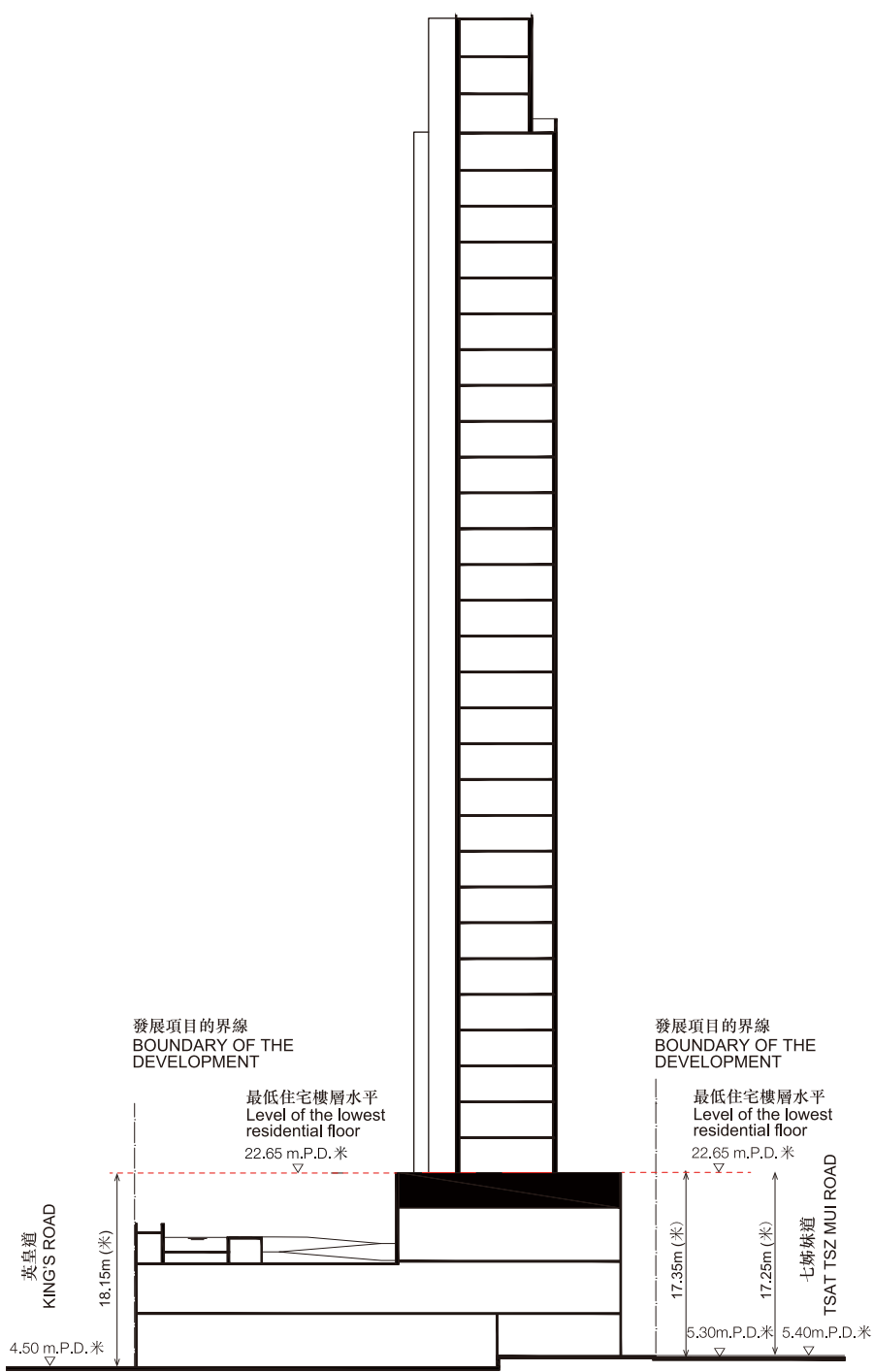
	天台頂	ROOF TOP
	機電房	E & M ROOMS
	機電房	E & M ROOMS
R/F	天台底護層	REFUGE ROOF
36/F	住宅樓層	RESIDENTIAL FLOOR
35/F	住宅樓層	RESIDENTIAL FLOOR
33/F	住宅樓層	RESIDENTIAL FLOOR
32/F	住宅樓層	RESIDENTIAL FLOOR
31/F	住宅樓層	RESIDENTIAL FLOOR
30/F	住宅樓層	RESIDENTIAL FLOOR
29/F	住宅樓層	RESIDENTIAL FLOOR
28/F	住宅樓層	RESIDENTIAL FLOOR
27/F	住宅樓層	RESIDENTIAL FLOOR
26/F	住宅樓層	RESIDENTIAL FLOOR
25/F	住宅樓層	RESIDENTIAL FLOOR
23/F	住宅樓層	RESIDENTIAL FLOOR
22/F	住宅樓層	RESIDENTIAL FLOOR
21/F	住宅樓層	RESIDENTIAL FLOOR
20/F	住宅樓層	RESIDENTIAL FLOOR
19/F	住宅樓層	RESIDENTIAL FLOOR
18/F	住宅樓層	RESIDENTIAL FLOOR
17/F	住宅樓層	RESIDENTIAL FLOOR
16/F	住宅樓層	RESIDENTIAL FLOOR
15/F	住宅樓層	RESIDENTIAL FLOOR
12/F	住宅樓層	RESIDENTIAL FLOOR
11/F	住宅樓層	RESIDENTIAL FLOOR
10/F	住宅樓層	RESIDENTIAL FLOOR
9/F	住宅樓層	RESIDENTIAL FLOOR
8/F	住宅樓層	RESIDENTIAL FLOOR
7/F	住宅樓層	RESIDENTIAL FLOOR
6/F	住宅樓層	RESIDENTIAL FLOOR
5/F	住宅樓層	RESIDENTIAL FLOOR
3/F	住宅樓層	RESIDENTIAL FLOOR
	結構轉接層	TRANSFER PLATE
2/F	有蓋園景 / 康樂設施 / 機電房	COVERED LANDSCAPE / RECREATIONAL FACILITIES / E & M ROOMS
1/F	餐廳 / 機電房	RESTAURANT / E & M ROOMS
G/F	餐廳 / 入口大堂	RESTAURANT / ENTRANCE LOBBY



18. 發展項目中的建築物的橫截面圖

CROSS-SECTION PLAN OF BUILDING IN THE DEVELOPMENT

	天台頂	ROOF TOP
	機電房	E & M ROOMS
	機電房	E & M ROOMS
R/F	天台庇護層	REFUGE ROOF
36/F	住宅樓層	RESIDENTIAL FLOOR
35/F	住宅樓層	RESIDENTIAL FLOOR
33/F	住宅樓層	RESIDENTIAL FLOOR
32/F	住宅樓層	RESIDENTIAL FLOOR
31/F	住宅樓層	RESIDENTIAL FLOOR
30/F	住宅樓層	RESIDENTIAL FLOOR
29/F	住宅樓層	RESIDENTIAL FLOOR
28/F	住宅樓層	RESIDENTIAL FLOOR
27/F	住宅樓層	RESIDENTIAL FLOOR
26/F	住宅樓層	RESIDENTIAL FLOOR
25/F	住宅樓層	RESIDENTIAL FLOOR
23/F	住宅樓層	RESIDENTIAL FLOOR
22/F	住宅樓層	RESIDENTIAL FLOOR
21/F	住宅樓層	RESIDENTIAL FLOOR
20/F	住宅樓層	RESIDENTIAL FLOOR
19/F	住宅樓層	RESIDENTIAL FLOOR
18/F	住宅樓層	RESIDENTIAL FLOOR
17/F	住宅樓層	RESIDENTIAL FLOOR
16/F	住宅樓層	RESIDENTIAL FLOOR
15/F	住宅樓層	RESIDENTIAL FLOOR
12/F	住宅樓層	RESIDENTIAL FLOOR
11/F	住宅樓層	RESIDENTIAL FLOOR
10/F	住宅樓層	RESIDENTIAL FLOOR
9/F	住宅樓層	RESIDENTIAL FLOOR
8/F	住宅樓層	RESIDENTIAL FLOOR
7/F	住宅樓層	RESIDENTIAL FLOOR
6/F	住宅樓層	RESIDENTIAL FLOOR
5/F	住宅樓層	RESIDENTIAL FLOOR
3/F	住宅樓層	RESIDENTIAL FLOOR
	結構轉接層	TRANSFER PLATE
2/F	有蓋園景 / 康樂設施 / 機電房	COVERED LANDSCAPE / RECREATIONAL FACILITIES / E & M ROOMS
1/F	餐廳 / 機電房	RESTAURANT / E & M ROOMS
G/F	餐廳 / 入口大堂	RESTAURANT / ENTRANCE LOBBY



橫截面圖 B-B
Cross - section Plan B-B

1. 毗連建築物的一段英皇道為香港主水平基準以上4.50米。
 2. 毗連建築物的一段七姊妹道為香港主水平基準以上5.30-5.40米。
 3. 建築物最低住宅樓層水平為香港主水平基準以上22.65米。
 4. 紅色虛線為最低住宅樓層水平。
-
1. The part of King's Road adjacent to the building is 4.50 metres above Hong Kong Principal Datum.
 2. The part of Tsat Tsz Mui Road adjacent to the building is 5.30-5.40 metres above Hong Kong Principal Datum.
 3. The level of the lowest residential floor is 22.65 meters above Hong Kong Principal Datum.
 4. Red dotted line denotes the level of the lowest residential floor.

