

10.發展項目的住宅物業的樓面平面圖

FLOOR PLANS OF RESIDENTIAL PROPERTIES IN THE DEVELOPMENT

在本頁上之備註和圖例適用於全部的「發展項目的住宅物業的樓面平面圖」頁數。
The remarks and legends on this page apply to all pages of “Floor plans of residential properties in the development”.

備註：

1. 部分住宅單位的露台、工作平台、平台、天台或外牆或設有外露之公用喉管，或外牆裝飾板內藏之公用喉管。
2. 部分住宅單位內之部分天花或有跌級樓板，用以安裝上層之機電設備或配合上層之結構、建築設計及/或裝修設計上的需要。
3. 部分住宅單位內或設有假陣或假天花用以安裝冷氣喉管及/或其他機電設備。
4. 平面圖所列之數字以毫米標示之建築結構尺寸。

Remarks:

1. Common pipes exposed or enclosed in cladding may be located at the balcony, utility platform, flat roof, roof or external wall of some residential units.
2. There may be sunken slabs at some parts of the ceiling inside some residential units for the installation of mechanical and electrical services of the floor above or due to the structural, architectural and/or decoration design requirements of the floor above.
3. There may be ceiling bulkheads or false ceiling inside some residential units for the installation of air-conditioning conduits and/or other mechanical and electrical services.
4. The dimensions of the floor plans are all structural dimensions in millimeter.

樓面平面圖圖例

Legends of Floor Plans

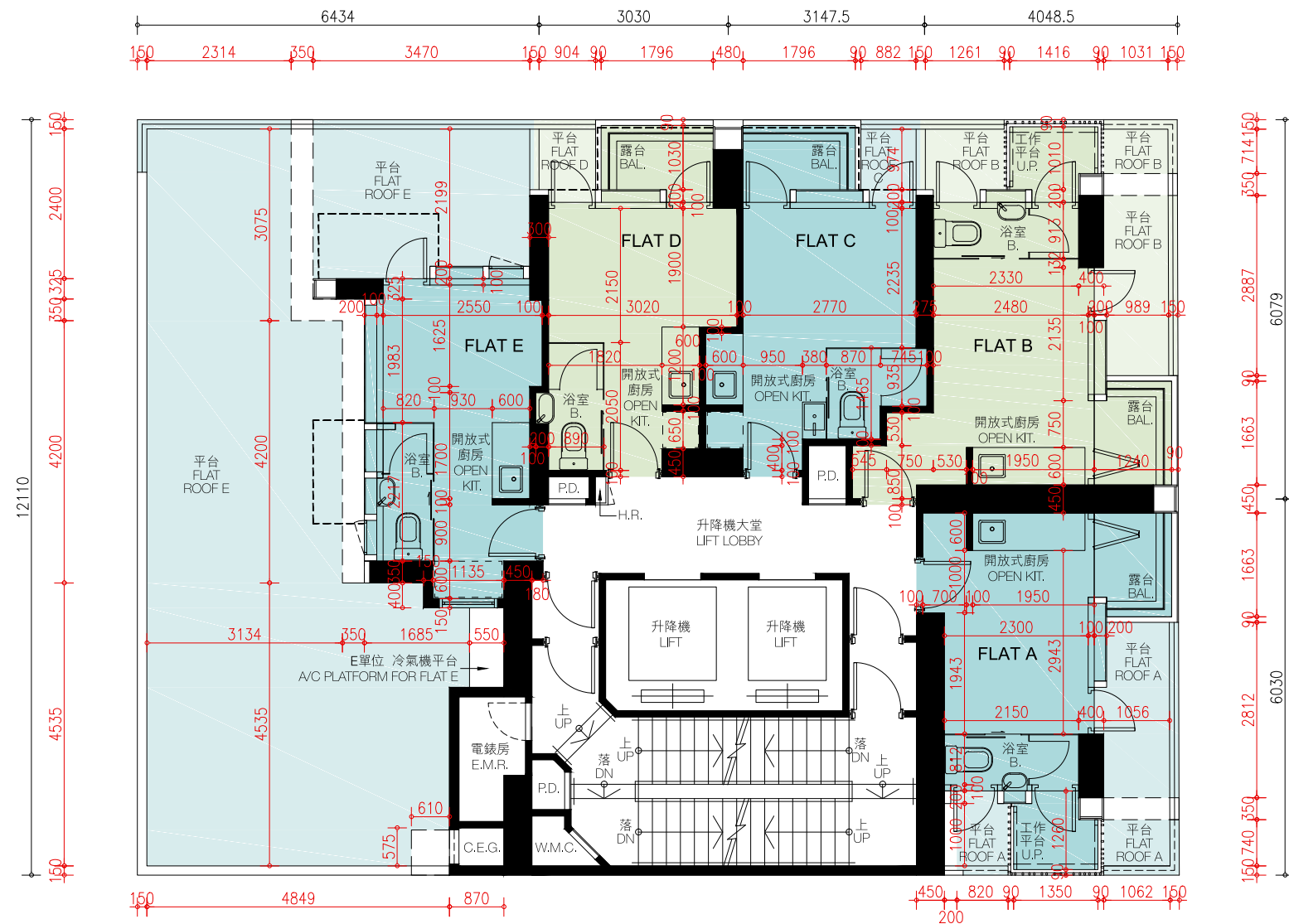
	= 隨樓附送的嵌入式裝置 Built-in fittings provided in the flats
B.	= 浴室 Bathroom
BAL.	= 露台 Balcony
C.E.G.	= 緊急發電機煙道 Chimney for emergency generator
DN	= 落 Down
E.M.R.	= 電錶房 Electric meter room
H.R.	= 消防喉轆 Hose reel
LIV & DIN	= 客飯廳 Living and dining room
OPEN KIT.	= 開放式廚房 Open kitchen
P.D.	= 管道 Pipe duct
T.O.B.	= 露台頂部 Top of balcony
T.O.C.W.	= 幕牆頂部 Top of curtain wall
T.O.U.P.	= 工作平台頂部 Top of utility platform
UP	= 上 UP
U.P.	= 工作平台 Utility platform
W.M.C.	= 水錶櫃 Water meter cabinet

10.發展項目的住宅物業的樓面平面圖

FLOOR PLANS OF RESIDENTIAL PROPERTIES IN THE DEVELOPMENT

5樓平面圖

5th Floor Plan



比例尺 Scale 0M (米) 5M (米)

因住宅物業的較高樓層的結構牆的厚度遞減，較高樓層的內部面積，一般比較低樓層的內部面積稍大。
The internal areas of the residential properties on the upper floors will generally be slightly larger than those on the lower floors because of the reducing thickness of the structural walls on the upper floors.

平台空白位置為供維修大廈設備使用的公用地方。
Blank areas on the flat roof are common areas for building facility maintenance.

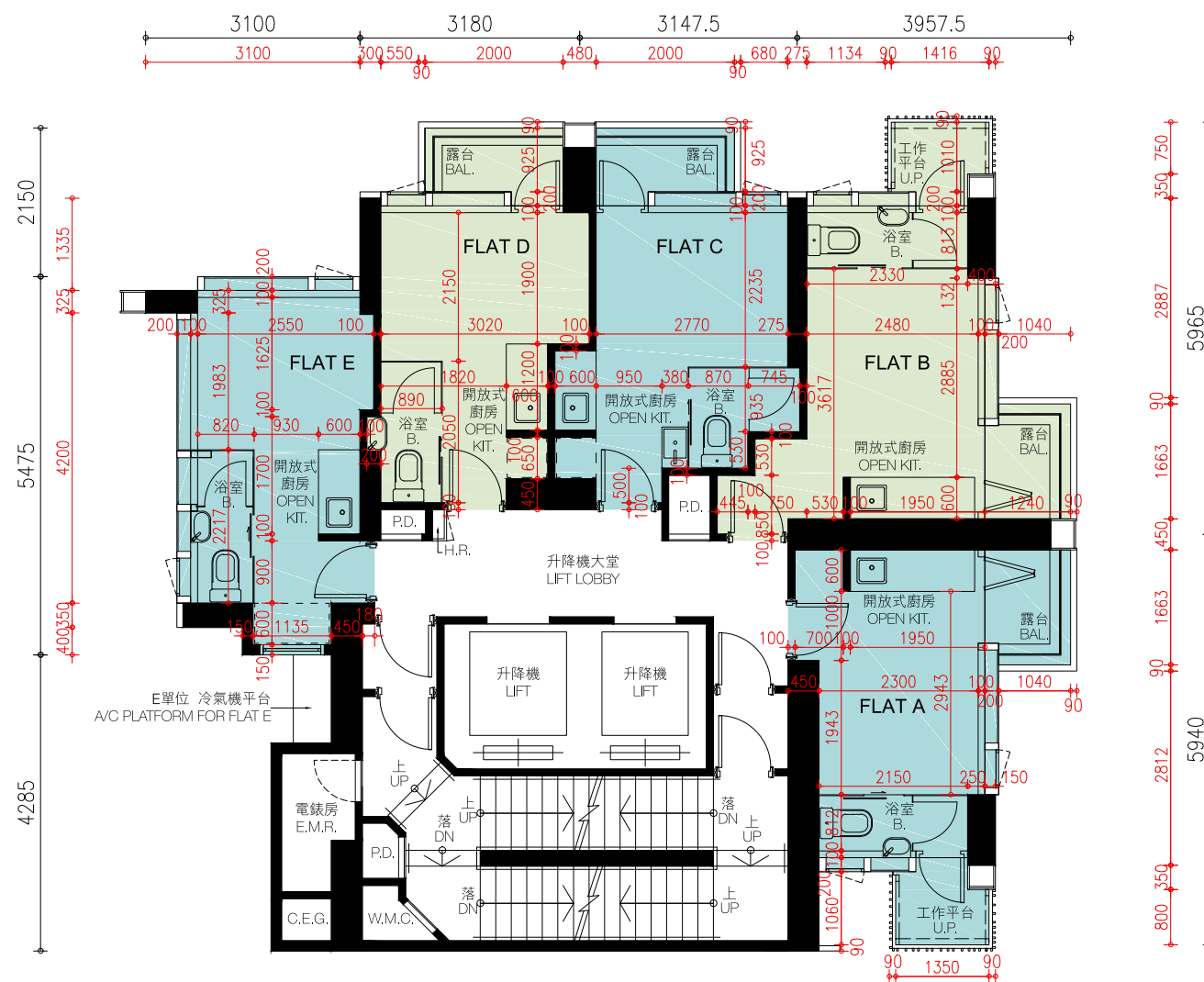
請參閱本售樓說明書第16頁為住宅物業樓面平面圖而設之備註及名詞及簡稱的圖例。
Please refer to page 16 of this sales brochure for the remarks and legends of the terms and abbreviations for the floor plans of residential properties.

備註：平面圖所列數字為以毫米標示之建築結構尺寸。
Note: The dimensions of floor plans are all structural dimensions in millimeter.

每個住宅物業 Each Residential Property	樓層 Floor	單位 Flat				
		A	B	C	D	E
樓板(不包括灰泥)的厚度(毫米) Thickness of Floor Slab (excluding plaster) (mm)	5/F	150	150	150	150	150
層與層之間的高度(毫米) Floor-to-Floor Height (mm)		3170	3170	3170	3170	3170

10.發展項目的住宅物業的樓面平面圖 FLOOR PLANS OF RESIDENTIAL PROPERTIES IN THE DEVELOPMENT

6樓至12樓及15樓平面圖 6th to 12th & 15th Floor Plan



比例尺 Scale 0M (米) 5M (米)

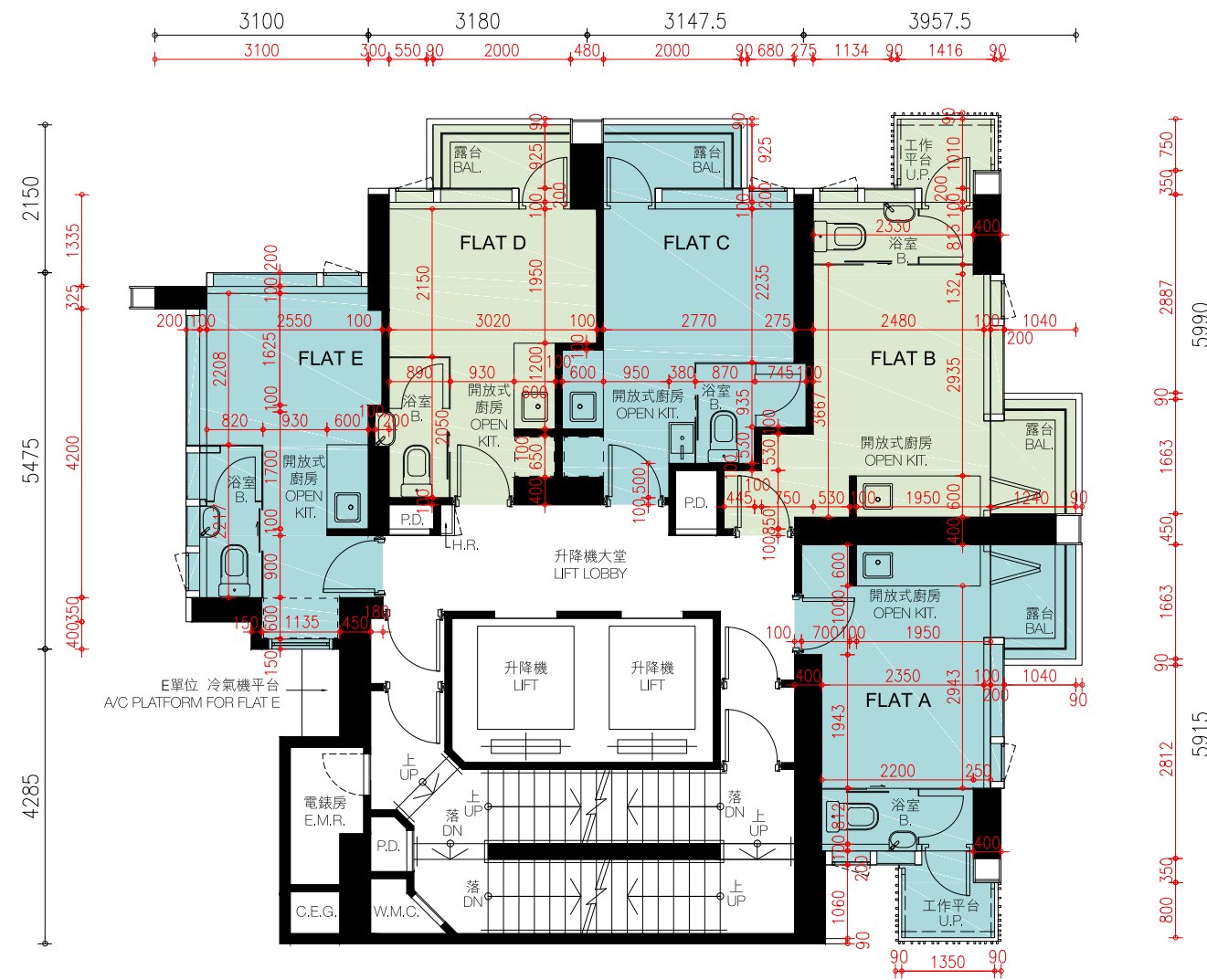
因住宅物業的較高樓層的結構牆的厚度遞減，較高樓層的內部面積，一般比較低樓層的內部面積稍大。
The internal areas of the residential properties on the upper floors will generally be slightly larger than those on the lower floors because of the reducing thickness of the structural walls on the upper floors.

請參閱本售樓說明書第16頁為住宅物業樓面平面圖而設之備註及名詞及簡稱的圖例。
Please refer to page 16 of this sales brochure for the remarks and legends of the terms and abbreviations for the floor plans of residential properties.

備註：平面圖所列數字為以毫米標示之建築結構尺寸。
Note: The dimensions of floor plans are all structural dimensions in millimeter.

每個住宅物業 Each Residential Property	樓層 Floor	單位 Flat				
		A	B	C	D	E
樓板(不包括灰泥)的厚度(毫米) Thickness of Floor Slab (excluding plaster) (mm)	6/F - 12/F & 15/F	150	150	150	150	150
層與層之間的高度(毫米) Floor-to-Floor Height (mm)		3170	3170	3170	3170	3170

16樓至21樓平面圖 16th to 21st Floor Plan



比例尺 Scale 0M (米) 5M (米)

因住宅物業的較高樓層的結構牆的厚度遞減，較高樓層的內部面積，一般比較低樓層的內部面積稍大。
The internal areas of the residential properties on the upper floors will generally be slightly larger than those on the lower floors because of the reducing thickness of the structural walls on the upper floors.

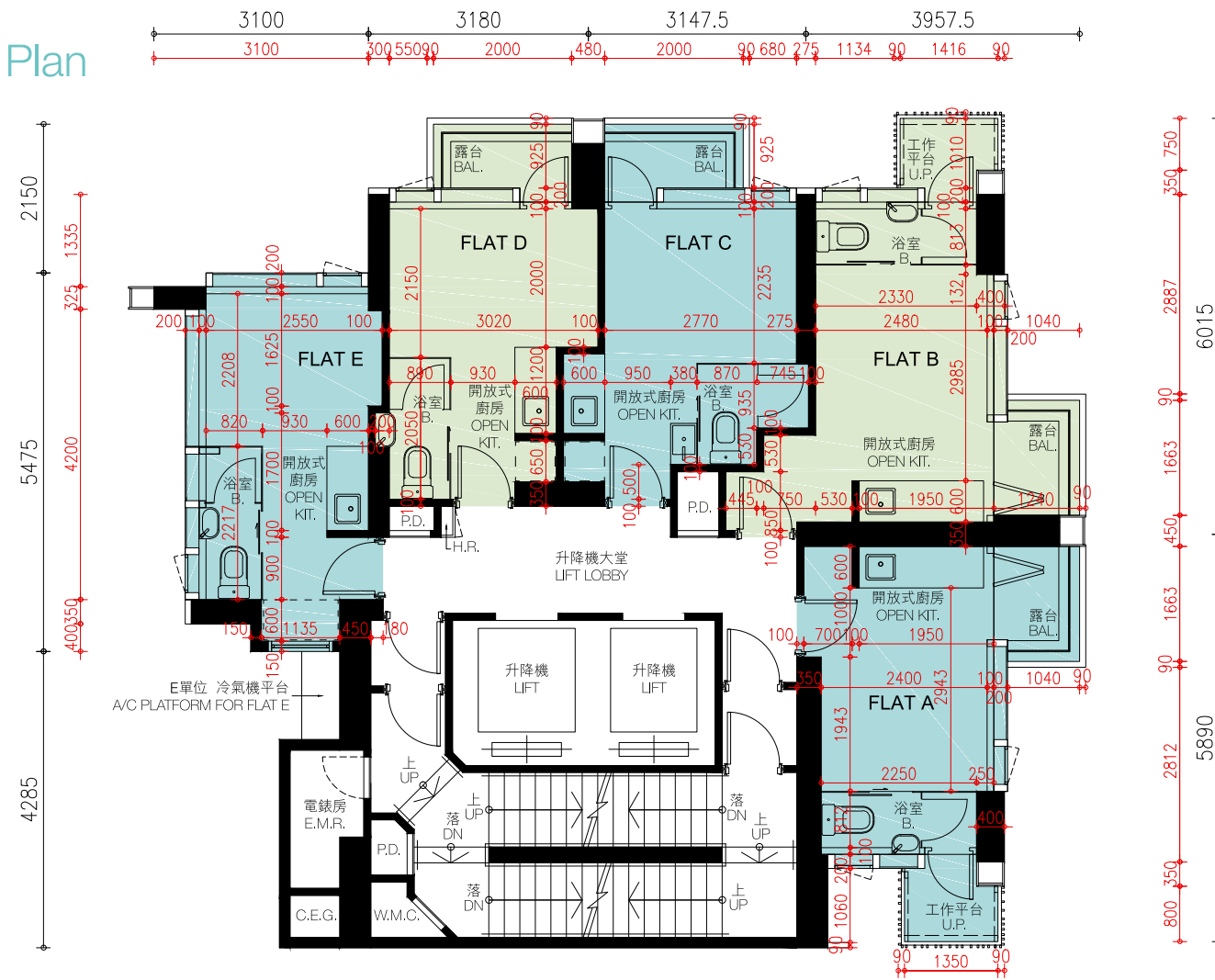
請參閱本售樓說明書第16頁為住宅物業樓面平面圖而設之備註及名詞及簡稱的圖例。
Please refer to page 16 of this sales brochure for the remarks and legends of the terms and abbreviations for the floor plans of residential properties.

備註：平面圖所列數字為以毫米標示之建築結構尺寸。
Note: The dimensions of floor plans are all structural dimensions in millimeter.

每個住宅物業 Each Residential Property	樓層 Floor	單位 Flat				
		A	B	C	D	E
樓板(不包括灰泥)的厚度(毫米) Thickness of Floor Slab (excluding plaster) (mm)	16/F - 21/F	150	150	150	150	150
層與層之間的高度(毫米) Floor-to-Floor Height (mm)		3170	3170	3170	3170	3170

10.發展項目的住宅物業的樓面平面圖 FLOOR PLANS OF RESIDENTIAL PROPERTIES IN THE DEVELOPMENT

22樓至23樓及25樓至27樓平面圖
22nd to 23rd & 25th to 27th Floor Plan



比例尺 Scale 0M (米) 5M (米)

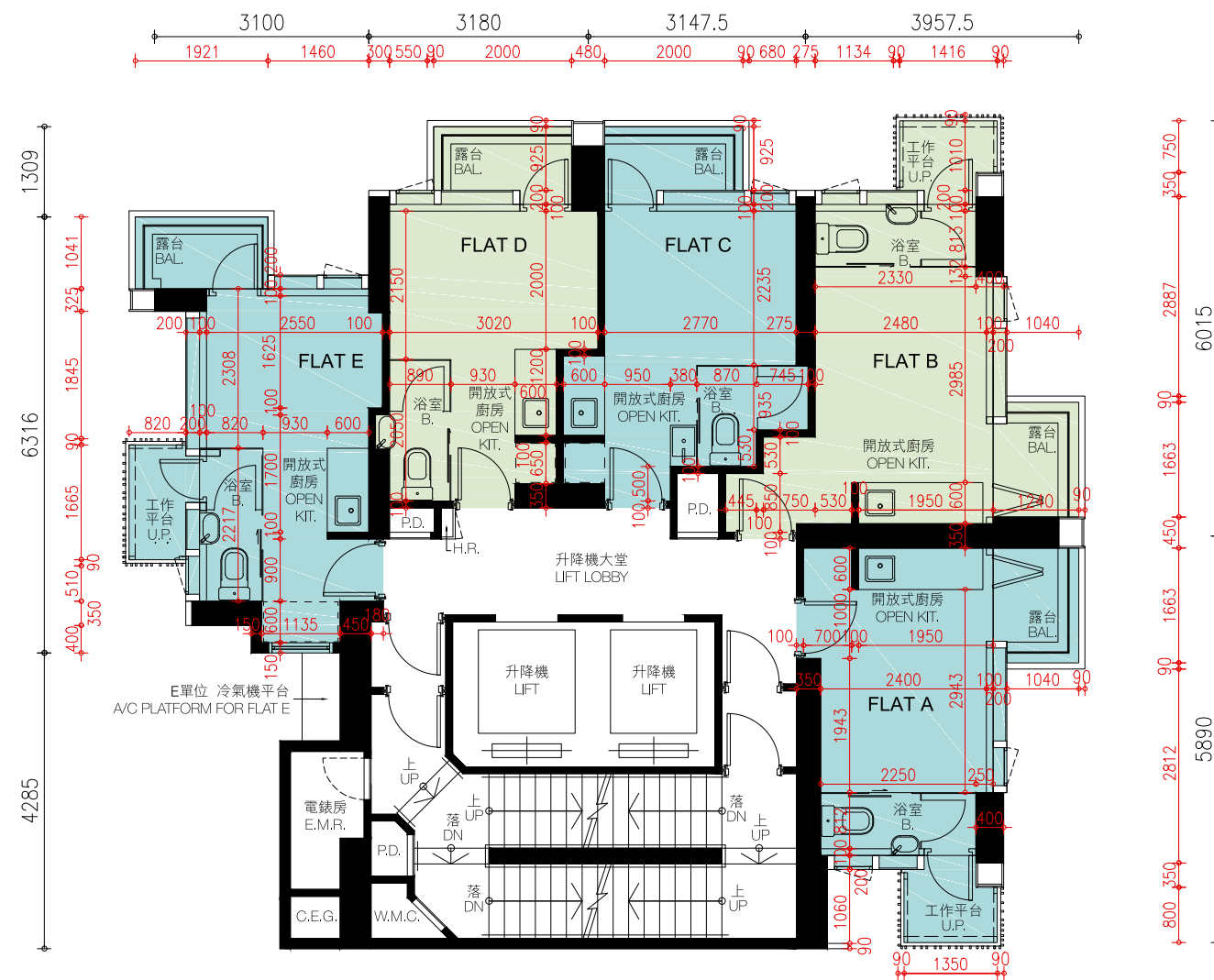
因住宅物業的較高樓層的結構牆的厚度遞減，較高樓層的內部面積，一般比較低樓層的內部面積稍大。
The internal areas of the residential properties on the upper floors will generally be slightly larger than those on the lower floors because of the reducing thickness of the structural walls on the upper floors.

請參閱本售樓說明書第16頁為住宅物業樓面平面圖而設之備註及名詞及簡稱的圖例。
Please refer to page 16 of this sales brochure for the remarks and legends of the terms and abbreviations for the floor plans of residential properties.

備註：平面圖所列數字為以毫米標示之建築結構尺寸。
Note: The dimensions of floor plans are all structural dimensions in millimeter.

每個住宅物業 Each Residential Property	樓層 Floor	單位 Flat				
		A	B	C	D	E
樓板(不包括灰泥)的厚度(毫米) Thickness of Floor Slab (excluding plaster) (mm)	22/F - 23/F & 25/F - 27/F	150	150	150	150	150
層與層之間的高度(毫米) Floor-to-Floor Height (mm)		3170	3170	3170	3170	3170

28樓至32樓平面圖 28th to 32nd Floor Plan



比例尺 Scale 0M (米) 5M (米)

因住宅物業的較高樓層的結構牆的厚度遞減，較高樓層的內部面積，一般比較低樓層的內部面積稍大。
The internal areas of the residential properties on the upper floors will generally be slightly larger than those on the lower floors because of the reducing thickness of the structural walls on the upper floors.

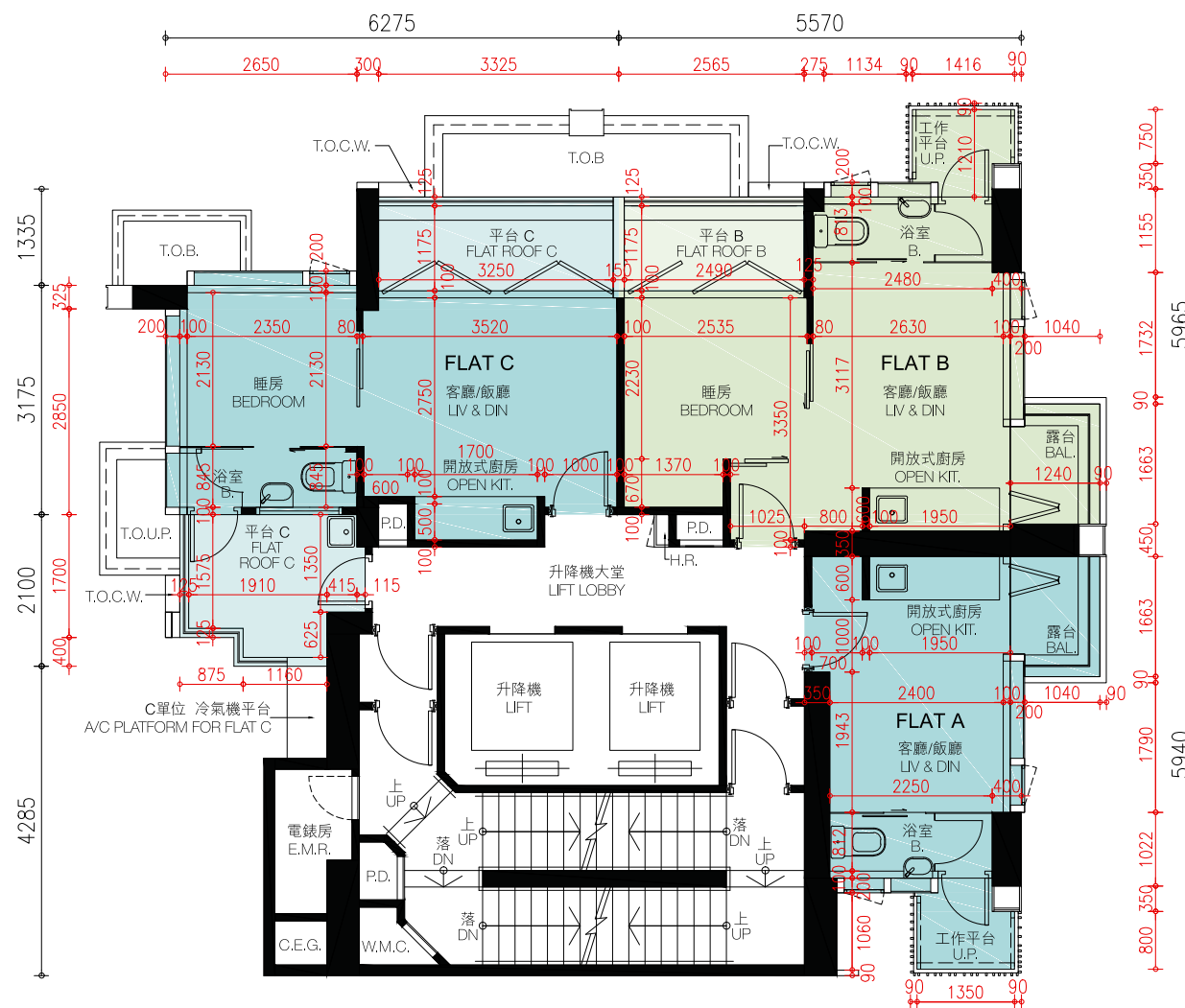
請參閱本售樓說明書第16頁為住宅物業樓面平面圖而設之備註及名詞及簡稱的圖例。
Please refer to page 16 of this sales brochure for the remarks and legends of the terms and abbreviations for the floor plans of residential properties.

備註：平面圖所列數字為以毫米標示之建築結構尺寸。
Note: The dimensions of floor plans are all structural dimensions in millimeter.

每個住宅物業 Each Residential Property	樓層 Floor	單位 Flat				
		A	B	C	D	E
樓板(不包括灰泥)的厚度(毫米) Thickness of Floor Slab (excluding plaster) (mm)	28/F - 31/F	150	150	150	150	150
層與層之間的高度(毫米) Floor-to-Floor Height (mm)		3170	3170	3170	3170	3170
樓板(不包括灰泥)的厚度(毫米) Thickness of Floor Slab (excluding plaster) (mm)	32/F	150	150	150	150	150
層與層之間的高度(毫米) Floor-to-Floor Height (mm)		3170	2870/ 3170	3170	2920/ 3170	2820/ 3170

10.發展項目的住宅物業的樓面平面圖 FLOOR PLANS OF RESIDENTIAL PROPERTIES IN THE DEVELOPMENT

33樓平面圖 33rd Floor Plan



比例尺 Scale 0M (米) 5M (米)

因住宅物業的較高樓層的結構牆的厚度遞減，較高樓層的內部面積，一般比較低樓層的內部面積稍大。
The internal areas of the residential properties on the upper floors will generally be slightly larger than those on the lower floors because of the reducing thickness of the structural walls on the upper floors.

請參閱本售樓說明書第16頁為住宅物業樓面平面圖而設之備註及名詞及簡稱的圖例。
Please refer to page 16 of this sales brochure for the remarks and legends of the terms and abbreviations for the floor plans of residential properties.

備註：平面圖所列數字為以毫米標示之建築結構尺寸。
Note: The dimensions of floor plans are all structural dimensions in millimeter.

每個住宅物業 Each Residential Property	樓層 Floor	單位 Flat		
		A	B	C
樓板(不包括灰泥)的厚度(毫米) Thickness of Floor Slab (excluding plaster) (mm)	33/F	150	150	150
層與層之間的高度(毫米) Floor-to-Floor Height (mm)		3500	3500	3500