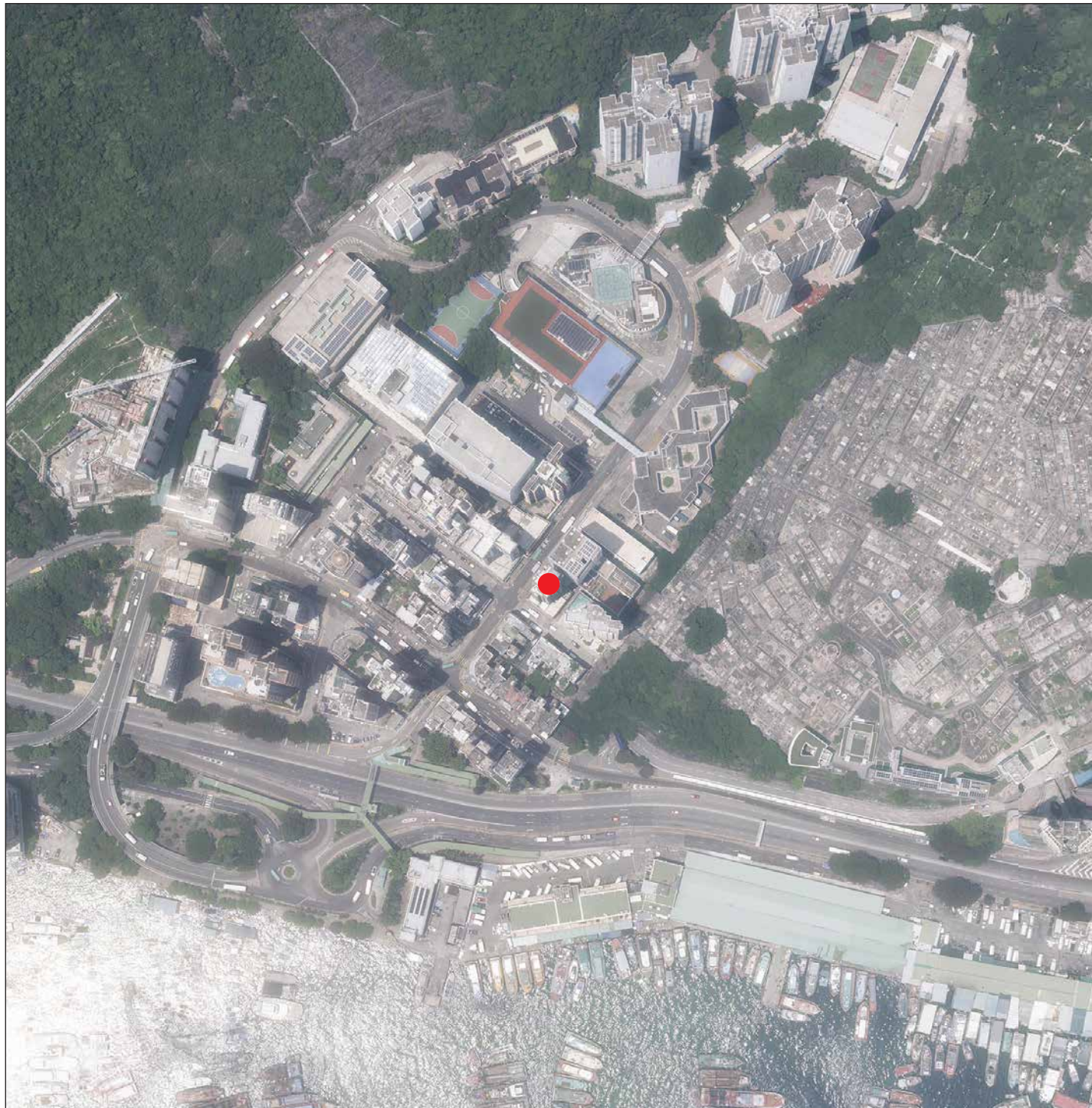


07 發展項目的鳥瞰照片

AERIAL PHOTOGRAPH OF THE DEVELOPMENT



摘錄自地政總署測繪處在香港仔6,000呎的飛行高度拍攝之鳥瞰照片，照片編號E225843C，拍攝日期為2024年8月7日。

Adopted from part of the aerial photograph taken by the Survey and Mapping Office of Lands Department at a flying height 6,000 feet in Aberdeen, Photo No. E225843C dated 7th August 2024.

香港特別行政區政府地政總署測繪處 版權所有，未經許可，不得複製。

Survey and Mapping Office, Lands Department, The Government of HKSAR Copyright reserved — reproduction by permission only.

備註：1. 因技術性問題，此鳥瞰照片所顯示的範圍超過《一手住宅物業銷售條例》的規定。

2. 賣方建議準買家到發展項目作實地考察，以對發展項目、其周邊地區環境及附近的公共設施有較佳了解。

Note: 1. Due to technical reasons, this aerial photograph has shown more than the area required under the Residential Properties (First-hand Sales) Ordinance.

2. The Vendor advises prospective purchasers to conduct an on-site visit for a better understanding of the Development, its surrounding environment and the public facilities nearby.

● 發展項目的位置
Location of the Development

07 發展項目的鳥瞰照片 AERIAL PHOTOGRAPH OF THE DEVELOPMENT



摘錄自地政總署測繪處在香港仔6,900呎的飛行高度拍攝之鳥瞰照片，照片編號E255940C，拍攝日期為2025年3月22日。

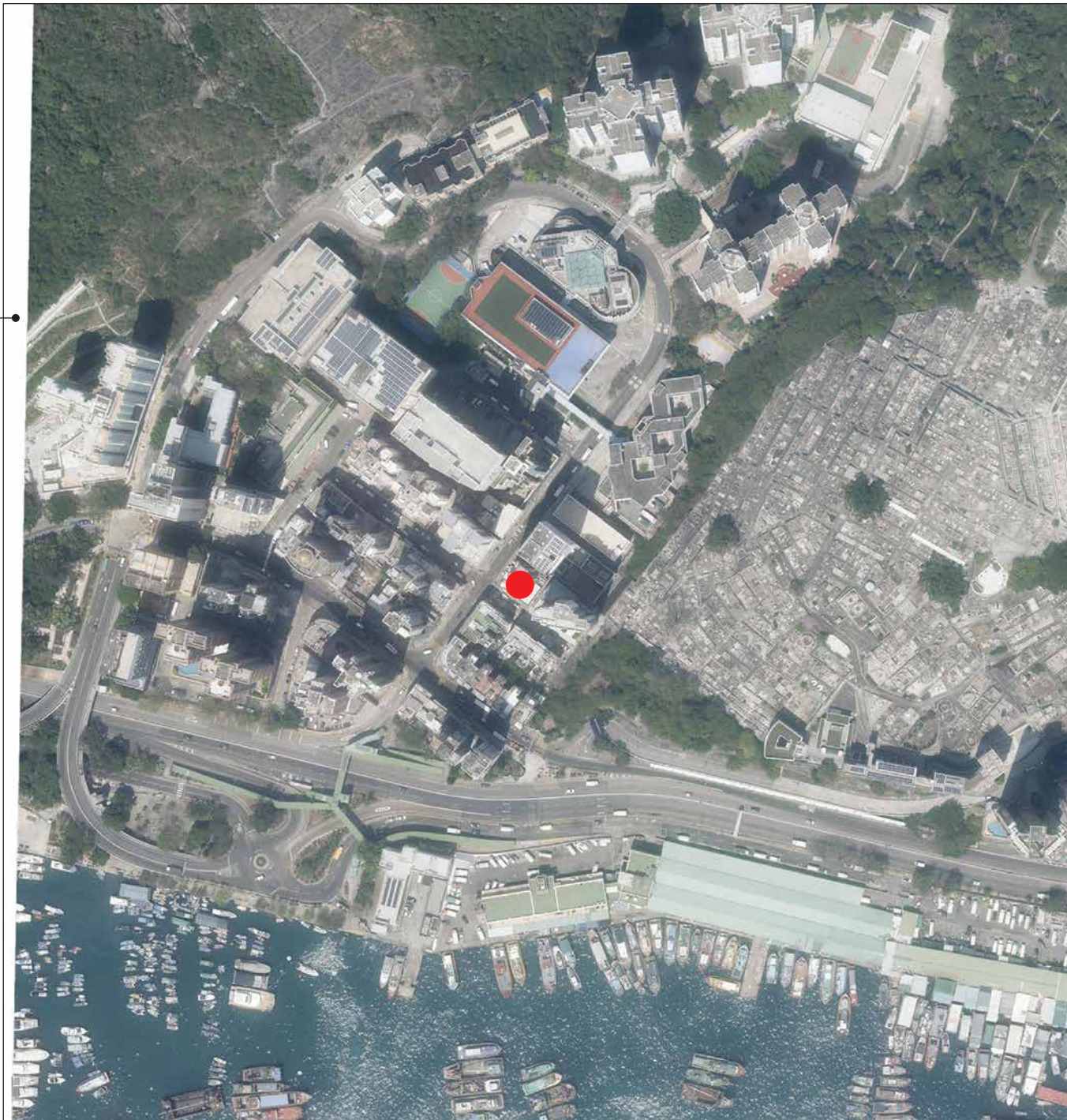
Adopted from part of the aerial photograph taken by the Survey and Mapping Office of Lands Department at a flying height 6,900 feet in Aberdeen, Photo No. E255940C dated 22nd March 2025.

香港特別行政區政府地政總署測繪處 版權所有，未經許可，不得複製。
Survey and Mapping Office, Lands Department, The Government of HKSAR Copyright reserved — reproduction by permission only.

備註：1. 因技術性問題，此鳥瞰照片所顯示的範圍超過《一手住宅物業銷售條例》的規定。
2. 賣方建議準買家到發展項目作實地考察，以對發展項目、其周邊地區環境及附近的公共設施有較佳了解。
Note: 1. Due to technical reasons, this aerial photograph has shown more than the area required under the Residential Properties (First-hand Sales) Ordinance.
2. The Vendor advises prospective purchasers to conduct an on-site visit for a better understanding of the Development, its surrounding environment and the public facilities nearby.

● 發展項目的位置
Location of the Development

07 發展項目的鳥瞰照片 AERIAL PHOTOGRAPH OF THE DEVELOPMENT



摘錄自地政總署測繪處在香港仔6,900呎的飛行高度拍攝之鳥瞰照片，照片編號E255941C，拍攝日期為2025年3月22日。

Adopted from part of the aerial photograph taken by the Survey and Mapping Office of Lands Department at a flying height 6,900 feet in Aberdeen, Photo No. E255941C dated 22nd March 2025.

香港特別行政區政府地政總署測繪處 版權所有，未經許可，不得複製。
Survey and Mapping Office, Lands Department, The Government of HKSAR Copyright reserved — reproduction by permission only.

備註：1. 因技術性問題，此鳥瞰照片所顯示的範圍超過《一手住宅物業銷售條例》的規定。
2. 賣方建議準買家到發展項目作實地考察，以對發展項目、其周邊地區環境及附近的公共設施有較佳了解。
Note: 1. Due to technical reasons, this aerial photograph has shown more than the area required under the Residential Properties (First-hand Sales) Ordinance.
2. The Vendor advises prospective purchasers to conduct an on-site visit for a better understanding of the Development, its surrounding environment and the public facilities nearby.

● 發展項目的位置
Location of the Development

關於發展項目的鳥瞰照片並不覆蓋本空白範圍
THIS BLANK AREA FALLS OUTSIDE THE COVERAGE OF AERIAL PHOTOGRAPH OF THE DEVELOPMNET