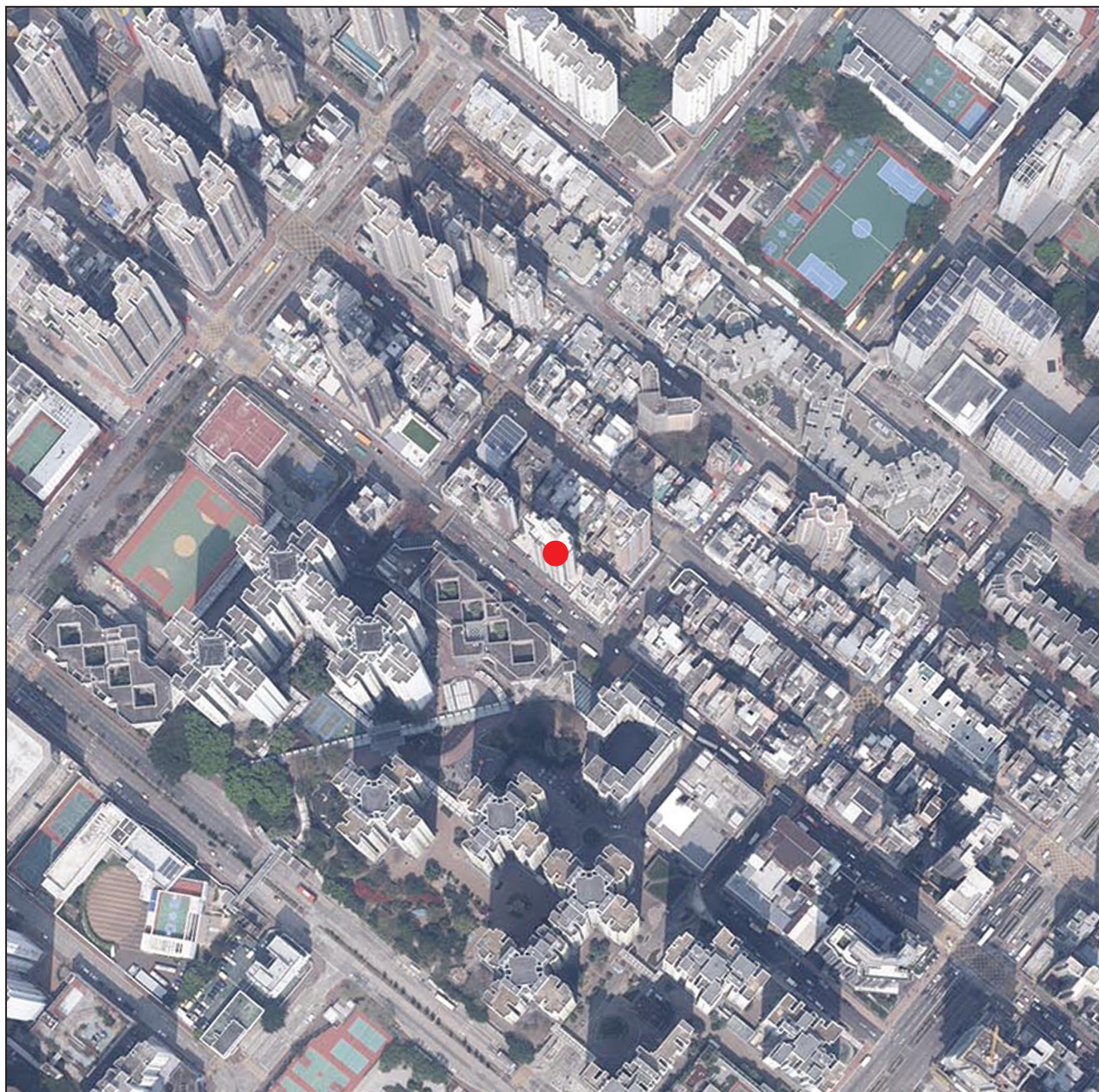


7. 發展項目的鳥瞰照片 AERIAL PHOTOGRAPH OF THE DEVELOPMENT



香港特別行政區政府地政總署測繪處 © 版權所有，未經許可，不得複製。
Survey and Mapping Office, Lands Department, The Government of HKSAR © Copyright reserved
– reproduction by permission only.

摘錄自地政總署測繪處於2024年3月8日在深水埗6,000呎的飛行高度拍攝之鳥瞰照片，編號為E218340C。

Adopted from part of the aerial photograph taken by the Survey and Mapping Office of the Lands Department at a flying height of 6,000 feet in Sham Shui Po, Photo No.E218340C, dated 8th March 2024.

備註：因技術性問題，此鳥瞰照片所顯示的範圍超過《一手住宅物業銷售條例》的規定。
Note: Due to technical reasons, this aerial photograph has shown more than the area required under the Residential Properties (First-hand Sales) Ordinance.

● 發展項目的位置
Location of the development

此版乃特意留白
This page is deliberately left in blank

