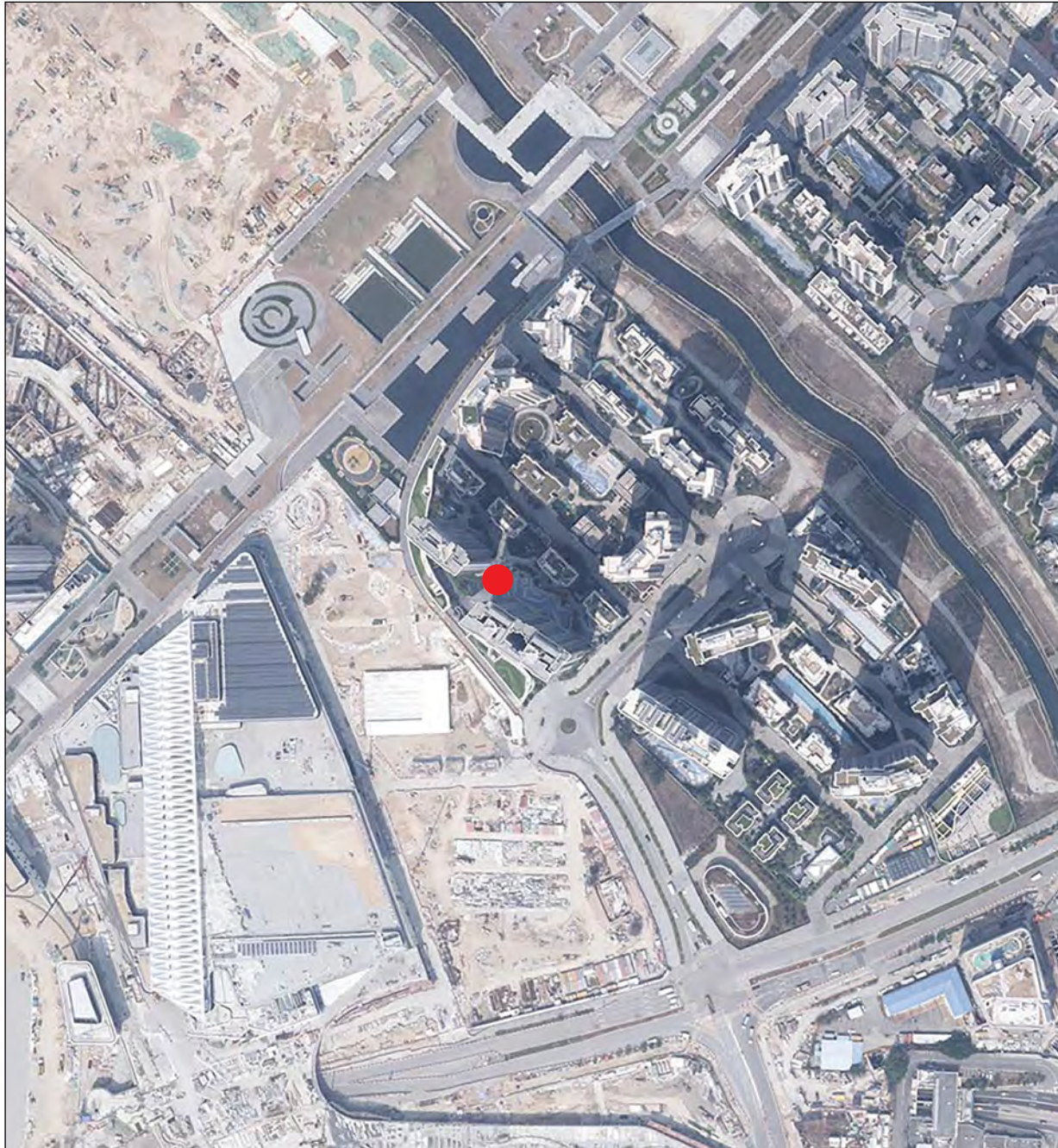


7 期數的鳥瞰照片 AERIAL PHOTOGRAPH OF THE PHASE



摘錄自地政總署測繪處於2024年3月8日在啓德6,000呎飛行高度拍攝之鳥瞰照片，編號為E218544C。
Adopted from part of the aerial photograph taken by the Survey and Mapping Office of Lands Department at a flying height of 6,000 feet in Kai Tak. Photo No. E218544C, dated 8th March 2024.

備註：因技術性問題，此鳥瞰照片所顯示的範圍超過《一手住宅物業銷售條例》的規定。
Note: Due to technical reasons, this aerial photograph has shown more than the area required under the Residential Properties (First-hand Sales) Ordinance.

● 期數的位置
Location of the Phase

7 期數的鳥瞰照片 AERIAL PHOTOGRAPH OF THE PHASE



關乎期數的鳥瞰照片並不覆蓋本空白範圍
This blank area falls outside the coverage of aerial photograph of the phase

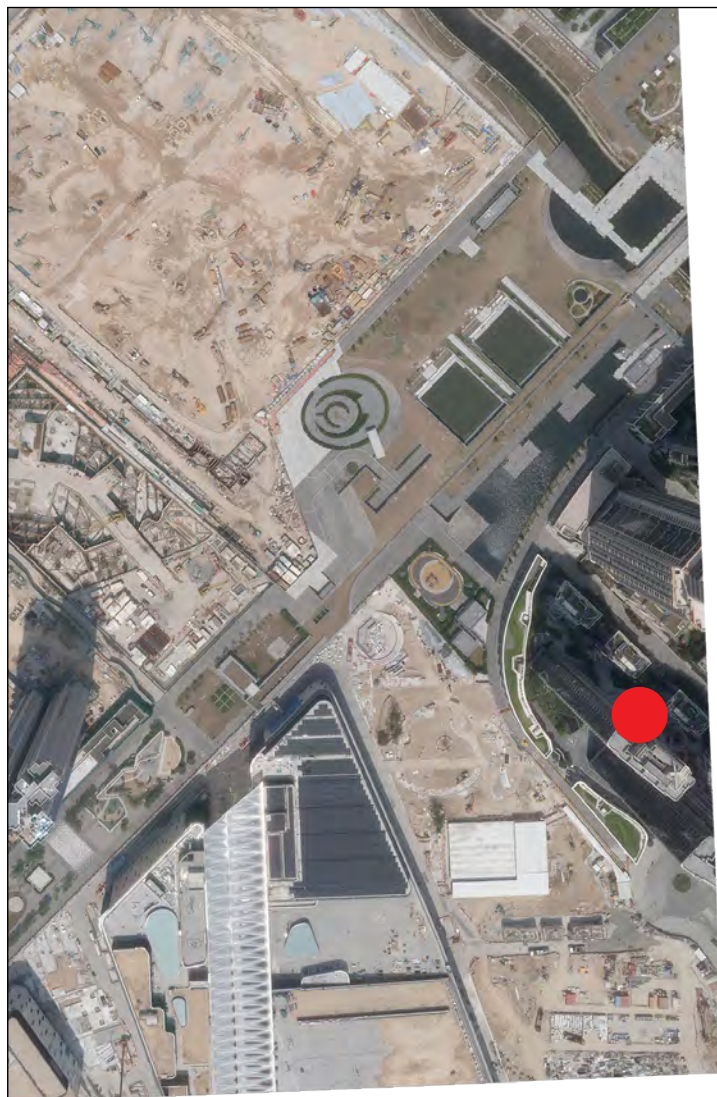
摘錄自地政總署測繪處於2024年3月20日在啓德2,000呎飛行高度拍攝之鳥瞰照片，編號為E220185C。
Adopted from part of the aerial photograph taken by the Survey and Mapping Office of Lands Department at a flying height of 2,000 feet in Kai Tak. Photo No. E220185C, dated 20th March 2024.

備註：因技術性問題，此鳥瞰照片所顯示的範圍超過《一手住宅物業銷售條例》的規定。
Note: Due to technical reasons, this aerial photograph has shown more than the area required under the Residential Properties (First-hand Sales) Ordinance.

● 期數的位置
Location of the Phase

香港特別行政區政府地政總署測繪處 © 版權所有，未經許可，不得複製。
Survey and Mapping Office, Lands Department, The Government of HKSAR © Copyright reserved – reproduction by permission only.

7 期數的鳥瞰照片 AERIAL PHOTOGRAPH OF THE PHASE



關乎期數的鳥瞰照片並不覆蓋本空白範圍
This blank area falls outside the coverage of aerial photograph of the phase

摘錄自地政總署測繪處於2024年3月20日在啓德2,000呎飛行高度拍攝之鳥瞰照片，編號為E220188C。
Adopted from part of the aerial photograph taken by the Survey and Mapping Office of Lands Department at a flying height of 2,000 feet in Kai Tak. Photo No. E220188C, dated 20th March 2024.

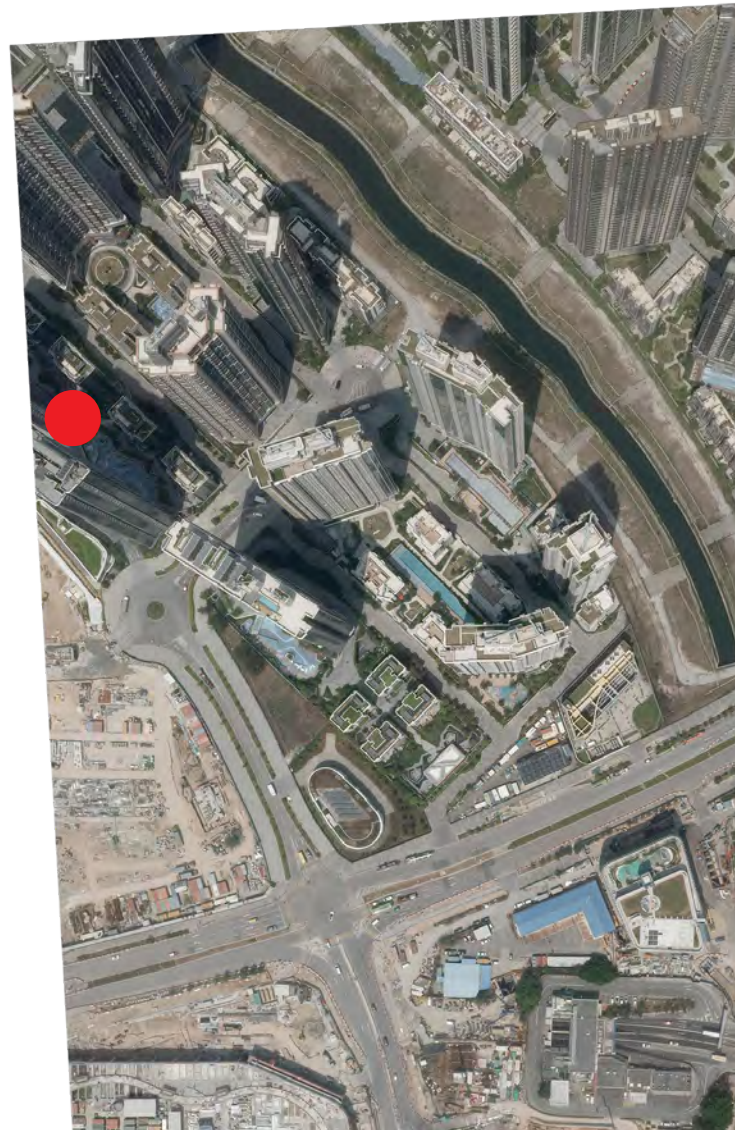
備註：因技術性問題，此鳥瞰照片所顯示的範圍超過《一手住宅物業銷售條例》的規定。
Note: Due to technical reasons, this aerial photograph has shown more than the area required under the Residential Properties (First-hand Sales) Ordinance.

● 期數的位置
Location of the Phase

香港特別行政區政府地政總署測繪處 © 版權所有，未經許可，不得複製。
Survey and Mapping Office, Lands Department, The Government of HKSAR © Copyright reserved – reproduction by permission only.

7 期數的鳥瞰照片 AERIAL PHOTOGRAPH OF THE PHASE

關於期數的鳥瞰照片並不覆蓋本空白範圍
This blank area falls outside the coverage of aerial photograph of the phase



摘錄自地政總署測繪處於2024年3月20日在啓德2,000呎飛行高度拍攝之鳥瞰照片，編號為E220406C。
Adopted from part of the aerial photograph taken by the Survey and Mapping Office of Lands Department at a flying height of 2,000 feet in Kai Tak. Photo No. E220406C, dated 20th March 2024.

備註：因技術性問題，此鳥瞰照片所顯示的範圍超過《一手住宅物業銷售條例》的規定。
Note: Due to technical reasons, this aerial photograph has shown more than the area required under the Residential Properties (First-hand Sales) Ordinance.

● 期數的位置
Location of the Phase

香港特別行政區政府地政總署測繪處 © 版權所有，未經許可，不得複製。
Survey and Mapping Office, Lands Department, The Government of HKSAR © Copyright reserved – reproduction by permission only.

7 期數的鳥瞰照片 AERIAL PHOTOGRAPH OF THE PHASE

關乎期數的鳥瞰照片並不覆蓋本空白範圍
This blank area falls outside the coverage of aerial photograph of the phase



摘錄自地政總署測繪處於2024年3月20日在啓德2,000呎飛行高度拍攝之鳥瞰照片，編號為E220408C。
Adopted from part of the aerial photograph taken by the Survey and Mapping Office of Lands Department at a flying height of 2,000 feet in Kai Tak. Photo No. E220408C, dated 20th March 2024.

備註：因技術性問題，此鳥瞰照片所顯示的範圍超過《一手住宅物業銷售條例》的規定。
Note: Due to technical reasons, this aerial photograph has shown more than the area required under the Residential Properties (First-hand Sales) Ordinance.

● 期數的位置
Location of the Phase

香港特別行政區政府地政總署測繪處 © 版權所有，未經許可，不得複製。
Survey and Mapping Office, Lands Department, The Government of HKSAR © Copyright reserved – reproduction by permission only.

7 期數的鳥瞰照片

AERIAL PHOTOGRAPH OF THE PHASE

此版乃特意留白

This page is deliberately left blank