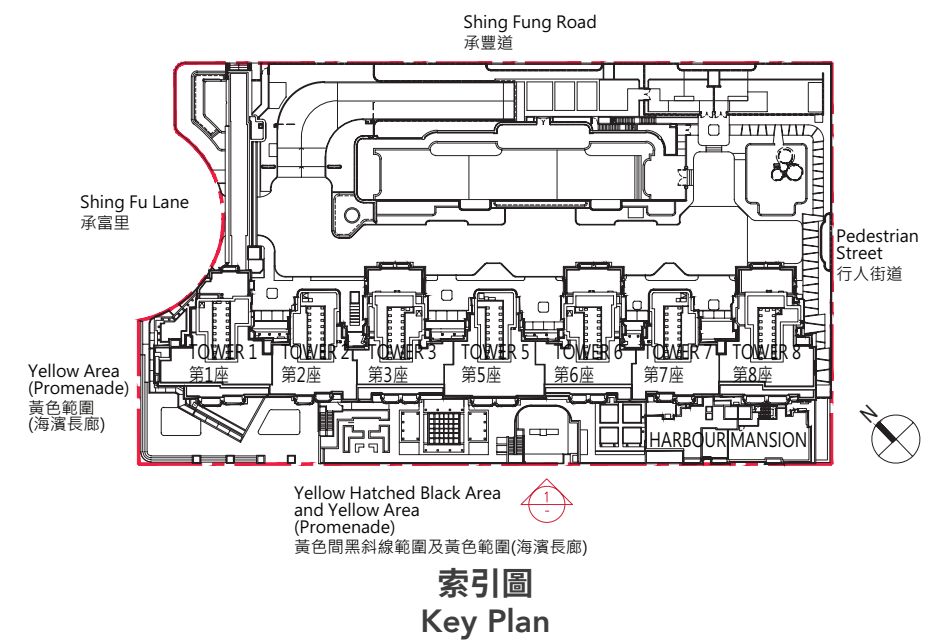


立面圖 1  
Elevation 1



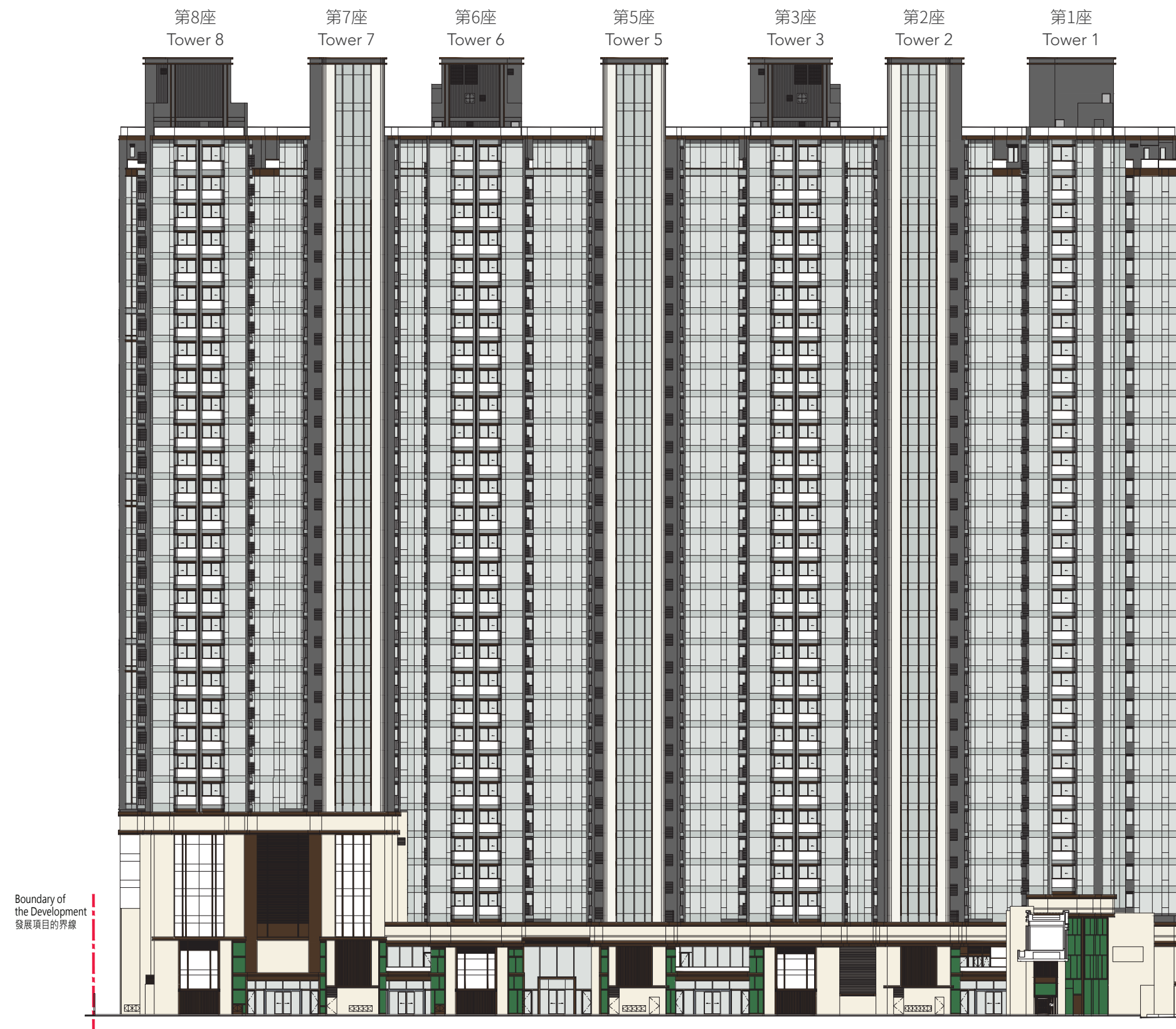
發展項目的認可人士證明本立面圖所顯示的立面：

1. 以2023年2月28日的情況為準的本項目的經批准的建築圖則為基礎擬備；及
2. 大致上與本項目的外觀一致。

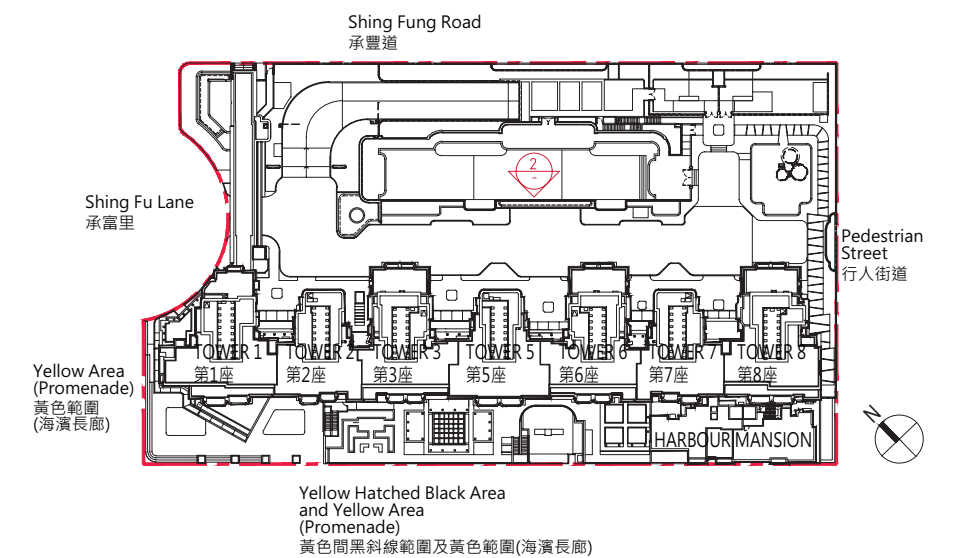
Authorized Person for the development certified that the elevations shown on these elevation plans:

1. are prepared on the basis of the approved building plans for the development as of 28 February 2023; and
2. are in general accordance with the outward appearance of the development.

# 19 立面圖 ELEVATION PLAN



立面圖 2  
Elevation 2

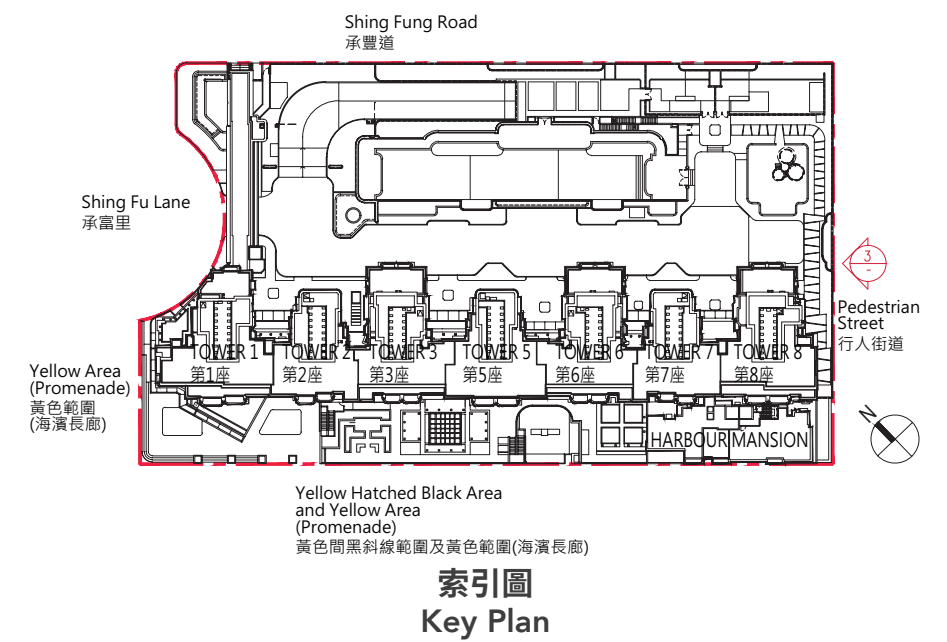
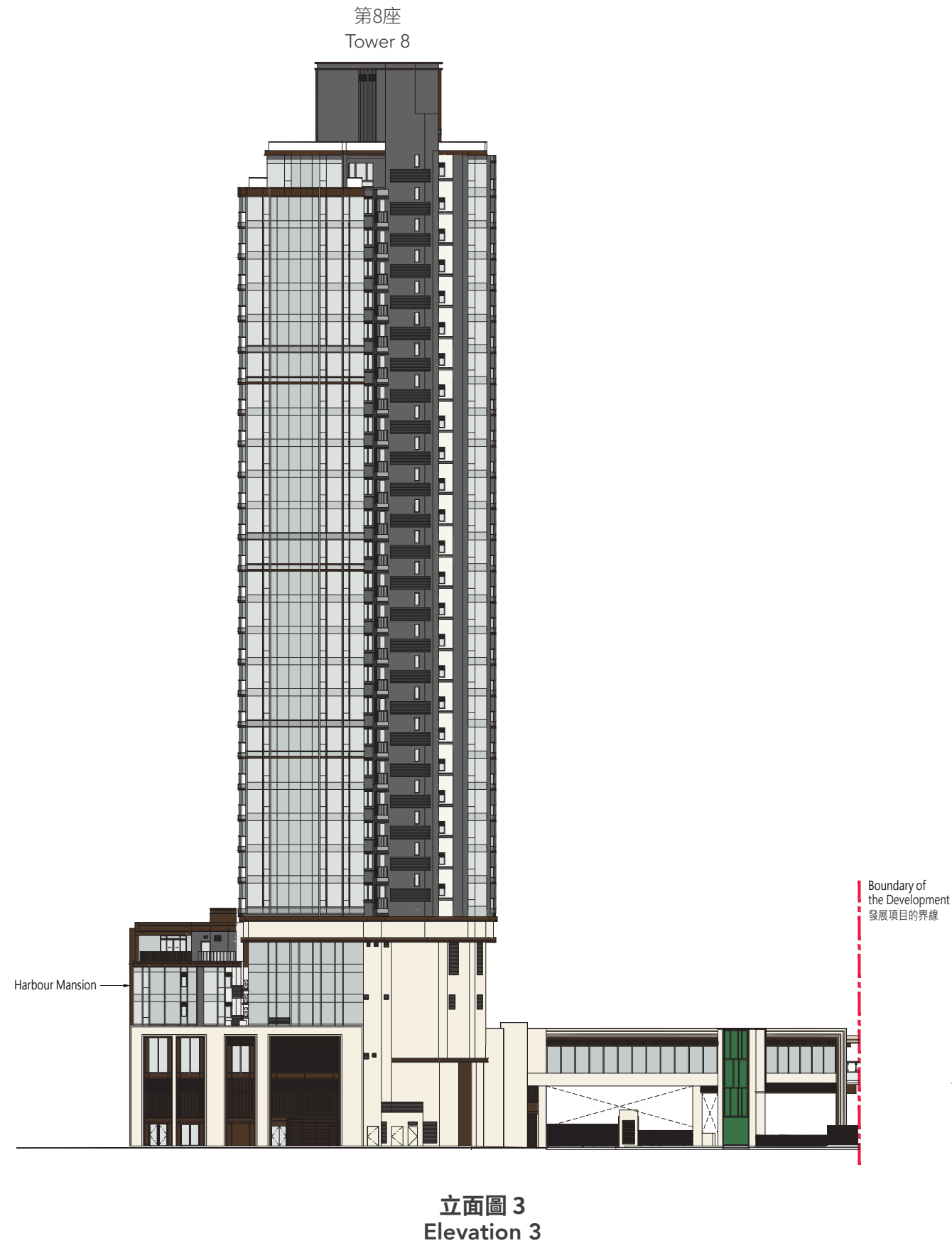


發展項目的認可人士證明本立面圖所顯示的立面：

1. 以2023年7月5日的情況為準的本項目的經批准的建築圖則為基礎擬備；及
2. 大致上與本項目的外觀一致。

Authorized Person for the development certified that the elevations shown on these elevation plans:

1. are prepared on the basis of the approved building plans for the development as of 5 July 2023; and
2. are in general accordance with the outward appearance of the development.

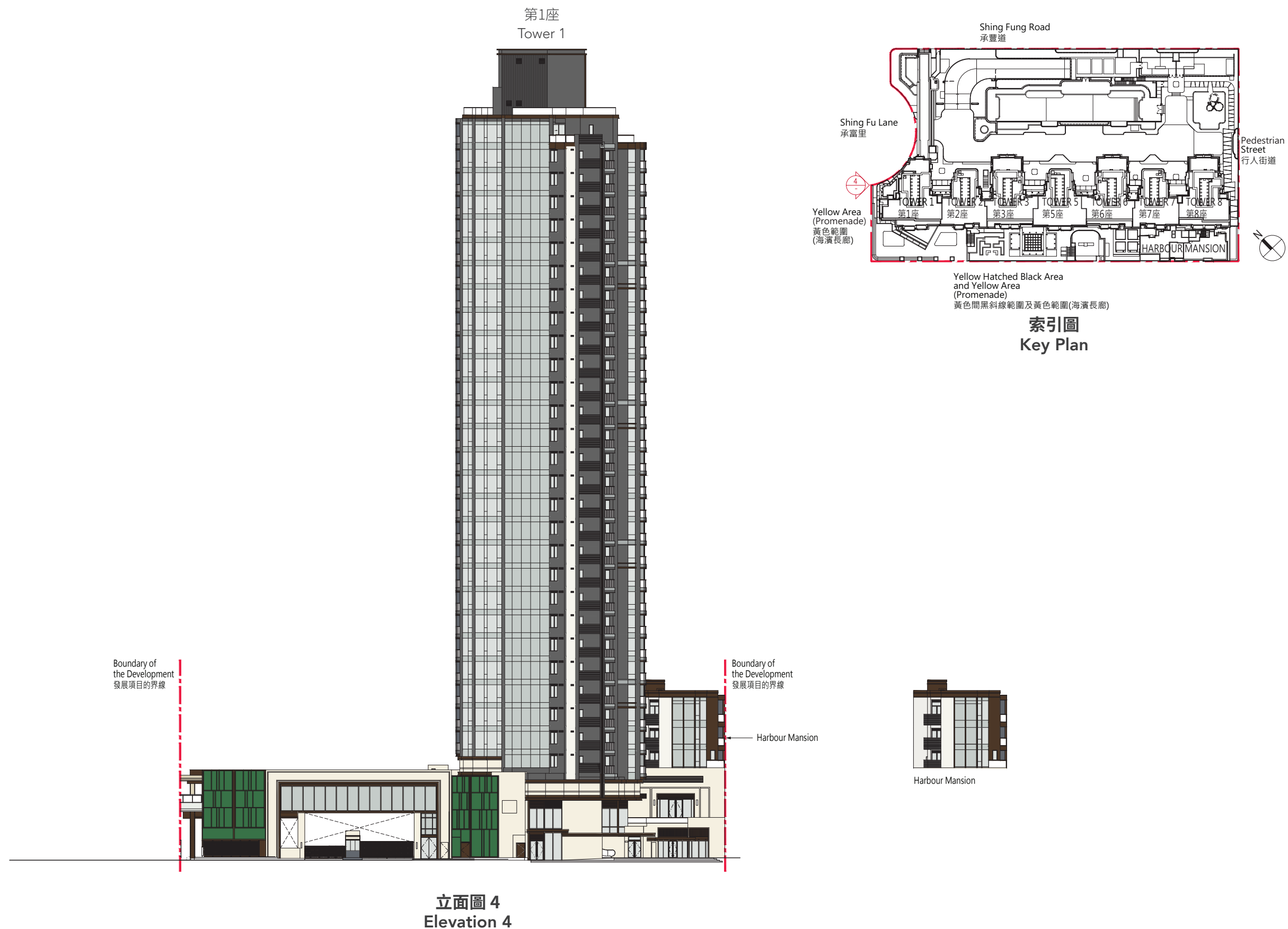


發展項目的認可人士證明本立面圖所顯示的立面：

1. 以2023年7月5日的情況為準的本項目的經批准的建築圖則為基礎擬備；及
2. 大致上與本項目的外觀一致。

Authorized Person for the development certified that the elevations shown on these elevation plans:

1. are prepared on the basis of the approved building plans for the development as of 5 July 2023; and
2. are in general accordance with the outward appearance of the development.



發展項目的認可人士證明本立面圖所顯示的立面：

1. 以2023年7月5日的情況為準的本項目的經批准的建築圖則為基礎擬備；及
2. 大致上與本項目的外觀一致。

Authorized Person for the development certified that the elevations shown on these elevation plans:

1. are prepared on the basis of the approved building plans for the development as of 5 July 2023; and
2. are in general accordance with the outward appearance of the development.