

下列名詞及簡稱之圖例及備註適用於“發展項目的住宅物業的樓面平面圖”中的所有頁數。

The legends of the terms and abbreviations and notes are applicable for all pages in “Floor Plans of Residential Properties in the Development”.

名詞及簡稱之圖例

Legends of the terms and abbreviations

A/C	=	Air-conditioning system platform 冷氣機平台
A/C Room	=	Air-conditioning system plant room 冷氣機房
B.	=	Bath 浴室
Bal.	=	Balcony 露台
Br.	=	Bedroom 睡房
B.W.	=	Bay Window 窗台
Dn.	=	Down 落
Din.	=	Dining room 飯廳
Elv. Rm.	=	Extra-low voltage electricity room 超低壓電房
H.R.	=	Hose reel 喉轆
Kit.	=	Kitchen 廚房
Lift	=	Lift 升降機
Lift Lobby	=	Lift Lobby 升降機大堂
Liv.	=	Living room 客廳
M. Br.	=	Master bedroom 主人房
P.D.	=	Pipe duct 槽位
R.S.	=	Refuse storage 廢物儲存
St.	=	Store room 儲物室
Up	=	Up 上
U.P.	=	Utility platform 工作平台
W.C.	=	Water closet 廁所
W.M.	=	Water meter 水錶

備註:

1. 部分住宅單位的露台、工作平台、平台、天台或外牆或設有外露之公用喉管，或外牆裝飾板內藏之公用喉管。
2. 部分住宅單位內之部分天花或有跌級樓板，用以安裝上層之機電設備或配合上層之結構、建築設計及/或裝修設計上的需要。
3. 部分住宅單位內或設有假陣或假天花用以安裝冷氣喉管及/或其他機電設備。

Notes:

1. Common pipes exposed or enclosed in cladding may be located at the balcony, utility platform, flat roof, roof or external wall of some residential units.
2. There may be sunken slabs at some parts of the ceiling inside some residential units for the installation of mechanical and electrical services of the floor above or due to the structural, architectural and/or decoration design requirements of the floor above.
3. There may be ceiling bulkheads or false ceiling inside some residential units for the installation of air-conditioning conduits and/or other mechanical and electrical services.

一樓平面圖 1ST FLOOR PLAN



備註：1. 位於工作平台內之虛線方格 表示分體式冷氣的室外散熱機之安裝位置。

2. 平面圖之尺規所列數字為以毫米標示之建築結構尺寸。

Note: 1. Dotted-line box at the utility platform denotes the position of air-conditioning outdoor unit.

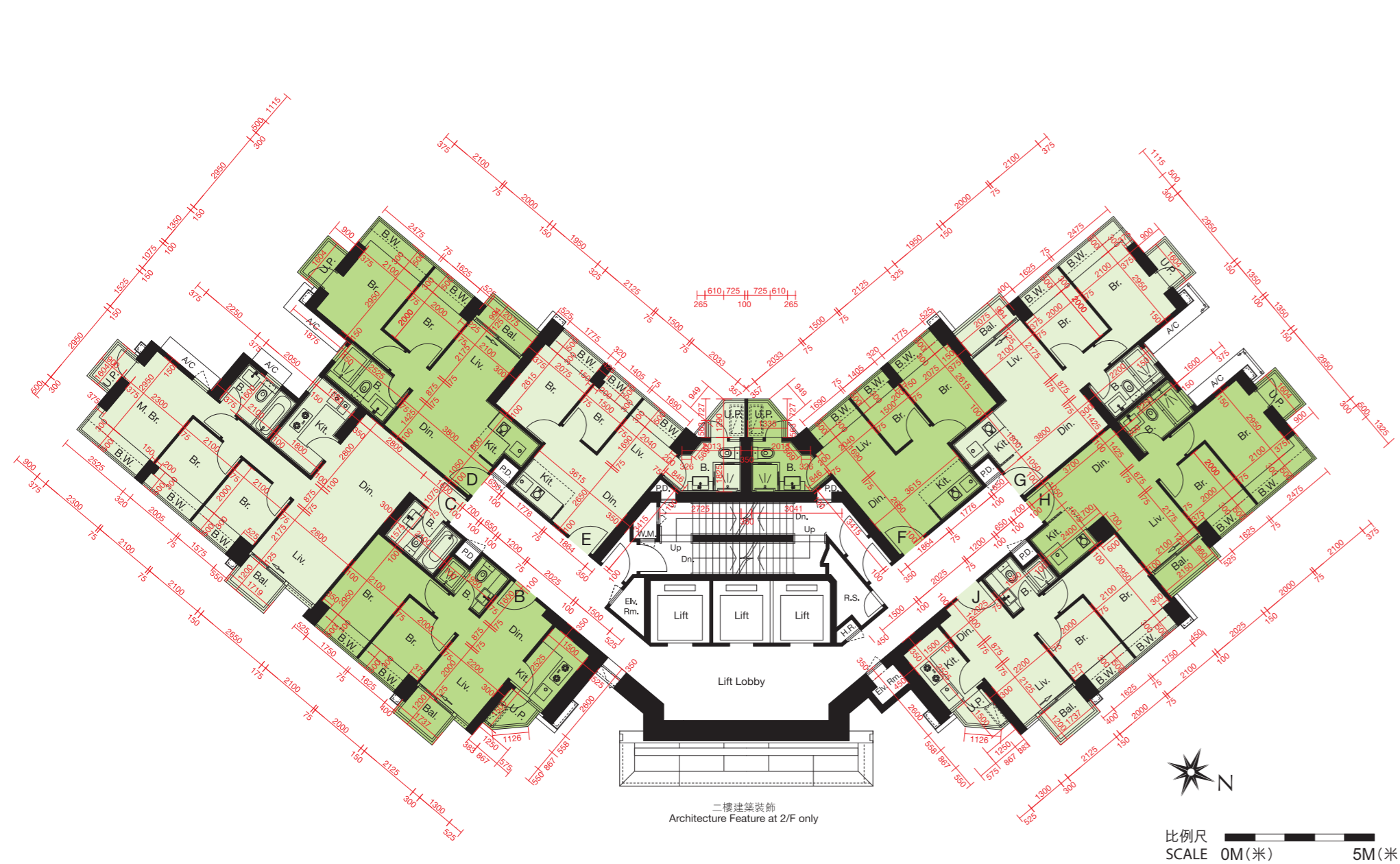
2. The dimensions of floor plans are all structural dimensions in millimeter.

每個住宅物業 Each Residential Property	樓層 Floor	單位 Unit							
		B	C	D	E	F	G	H	J
樓板(不包括灰泥)的厚度(毫米) Thickness of Floor Slabs(excluding plaster)(mm)	1/F	125,150,250	150,250	150,250	125,150,175	125,150,175	150,250	150,250	125,150,250
層與層之間的高度(毫米) Floor-to-Floor Height(mm)		3150	3150	3150	3150	3150	3150	3150	3150

因住宅物業的較高樓層的結構牆的厚度遞減，較高樓層的內部面積，一般比較低樓層的內部面積稍大。  
The internal areas of the residential properties on the upper floors will generally be slightly larger than those on the lower floors because of the reducing thickness of the structural walls on the upper floors.

二樓至十二樓平面圖 2ND - 12TH FLOOR PLAN

十五樓至十六樓平面圖 15TH - 16TH FLOOR PLAN



備註：1. 位於工作平台內之虛線方格 表示分體式冷氣的室外散熱機之安裝位置。  
2. 平面圖之尺規所列數字為以毫米標示之建築結構尺寸。  
Note: 1. Dotted-line box at the utility platform denotes the position of air-conditioning outdoor unit.  
2. The dimensions of floor plans are all structural dimensions in millimeter.

備註：1. 位於工作平台內之虛線方格 表示分體式冷氣的室外散熱機之安裝位置。  
2. 平面圖之尺規所列數字為以毫米標示之建築結構尺寸。  
Note: 1. Dotted-line box at the utility platform denotes the position of air-conditioning outdoor unit.  
2. The dimensions of floor plans are all structural dimensions in millimeter.

每個住宅物業 Each Residential Property	樓層 Floor	單位 Unit							
		B	C	D	E	F	G	H	J
樓板(不包括灰泥)的厚度(毫米) Thickness of Floor Slabs(excluding plaster)(mm)	2/F-12/F	125,150,250	150,250	150,250	125,150,175	125,150,175	150,250	150,250	125,150,250
層與層之間的高度(毫米) Floor-to-Floor Height(mm)		3150	3150	3150	3150	3150	3150	3150	3150

每個住宅物業 Each Residential Property	樓層 Floor	單位 Unit							
		B	C	D	E	F	G	H	J
樓板(不包括灰泥)的厚度(毫米) Thickness of Floor Slabs(excluding plaster)(mm)	15/F-16/F	125,150,250	150,250	150,250	125,150,175	125,150,175	150,250	150,250	125,150,250
層與層之間的高度(毫米) Floor-to-Floor Height(mm)		3150	3150	3150	3150	3150	3150	3150	3150

因住宅物業的較高樓層的結構牆的厚度遞減，較高樓層的內部面積，一般比較低樓層的內部面積稍大。  
The internal areas of the residential properties on the upper floors will generally be slightly larger than those on the lower floors because of the reducing thickness of the structural walls on the upper floors.

因住宅物業的較高樓層的結構牆的厚度遞減，較高樓層的內部面積，一般比較低樓層的內部面積稍大。  
The internal areas of the residential properties on the upper floors will generally be slightly larger than those on the lower floors because of the reducing thickness of the structural walls on the upper floors.

十七樓至十九樓平面圖 17TH - 19TH FLOOR PLAN

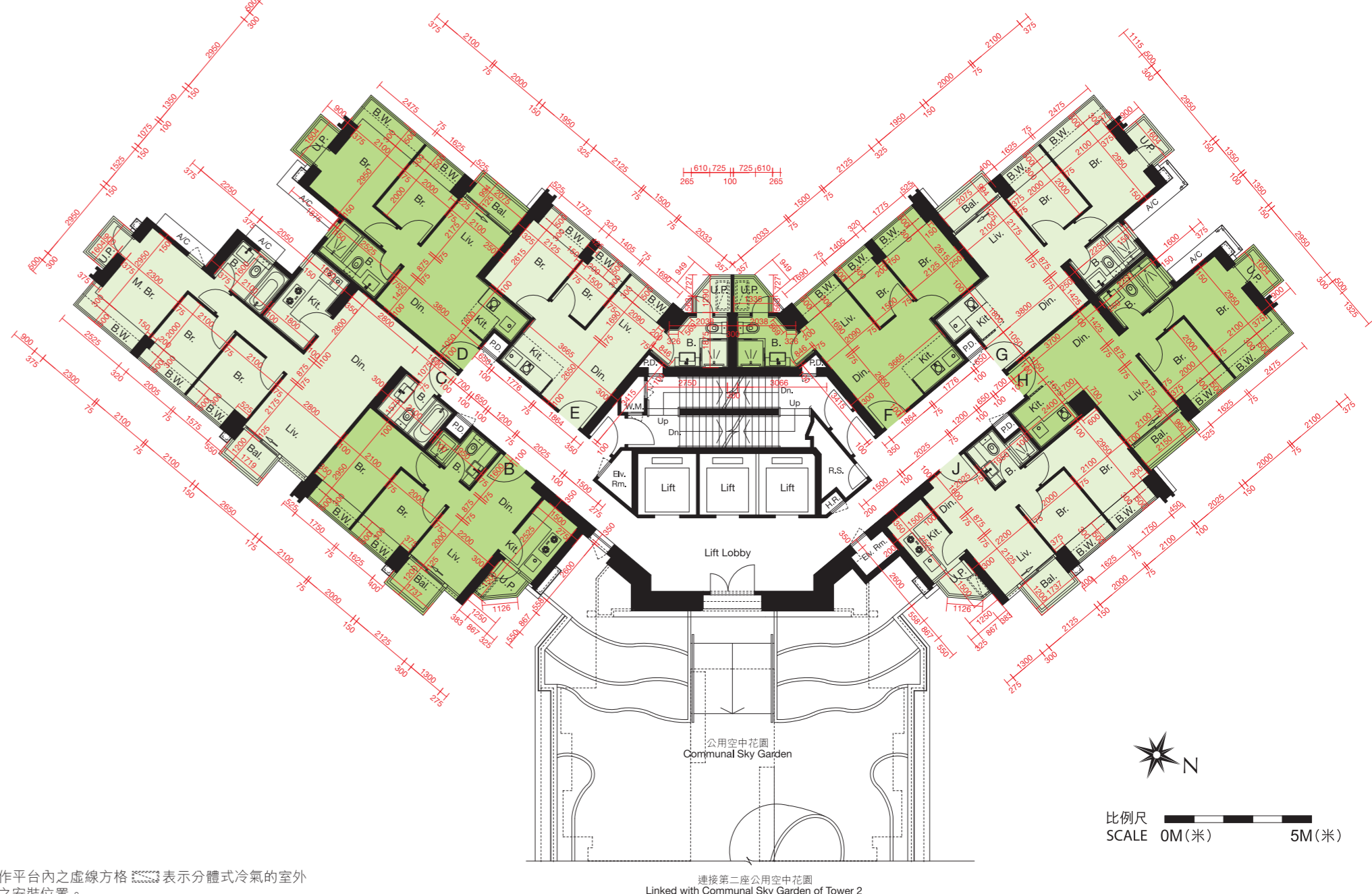


備註：1. 位於工作平台內之虛線方格 表示分體式冷氣的室外散熱機之安裝位置。  
2. 平面圖之尺規所列數字為以毫米標示之建築結構尺寸。  
Note: 1. Dotted-line box at the utility platform denotes the position of air-conditioning outdoor unit.  
2. The dimensions of floor plans are all structural dimensions in millimeter.

每個住宅物業 Each Residential Property	樓層 Floor	單位 Unit							
		B	C	D	E	F	G	H	J
樓板(不包括灰泥)的厚度(毫米) Thickness of Floor Slabs(excluding plaster)(mm)	17/F-19/F	125,150,250	150,250	150,250	125,150,175	125,150,175	150,250	150,250	125,150,250
層與層之間的高度(毫米) Floor-to-Floor Height(mm)		3150	3150	3150	3150	3150	3150	3150	3150

因住宅物業的較高樓層的結構牆的厚度遞減，較高樓層的內部面積，一般比較低樓層的內部面積稍大。  
The internal areas of the residential properties on the upper floors will generally be slightly larger than those on the lower floors because of the reducing thickness of the structural walls on the upper floors.

二十樓平面圖 20TH FLOOR PLAN



備註：1. 位於工作平台內之虛線方格 表示分體式冷氣的室外散熱機之安裝位置。  
2. 平面圖之尺規所列數字為以毫米標示之建築結構尺寸。  
Note: 1. Dotted-line box at the utility platform denotes the position of air-conditioning outdoor unit.  
2. The dimensions of floor plans are all structural dimensions in millimeter.

每個住宅物業 Each Residential Property	樓層 Floor	單位 Unit							
		B	C	D	E	F	G	H	J
樓板(不包括灰泥)的厚度(毫米) Thickness of Floor Slabs(excluding plaster)(mm)	20/F	125,150,250	150,250	150,250	125,150,175	125,150,175	150,250	150,250	125,150,250
層與層之間的高度(毫米) Floor-to-Floor Height(mm)		3150	3150	3150	3150	3150	3150	3150	3150

因住宅物業的較高樓層的結構牆的厚度遞減，較高樓層的內部面積，一般比較低樓層的內部面積稍大。  
The internal areas of the residential properties on the upper floors will generally be slightly larger than those on the lower floors because of the reducing thickness of the structural walls on the upper floors.

二十一樓至二十二樓平面圖 21ST - 22ND FLOOR PLAN

二十三樓至二十八樓平面圖 23RD - 28TH FLOOR PLAN



備註：1. 位於工作平台內之虛線方格 表示分體式冷氣的室外散熱機之安裝位置。  
2. 平面圖之尺規所列數字為以毫米標示之建築結構尺寸。  
Note: 1. Dotted-line box at the utility platform denotes the position of air-conditioning outdoor unit.  
2. The dimensions of floor plans are all structural dimensions in millimeter.

備註：1. 位於工作平台內之虛線方格 表示分體式冷氣的室外散熱機之安裝位置。  
2. 平面圖之尺規所列數字為以毫米標示之建築結構尺寸。  
Note: 1. Dotted-line box at the utility platform denotes the position of air-conditioning outdoor unit.  
2. The dimensions of floor plans are all structural dimensions in millimeter.

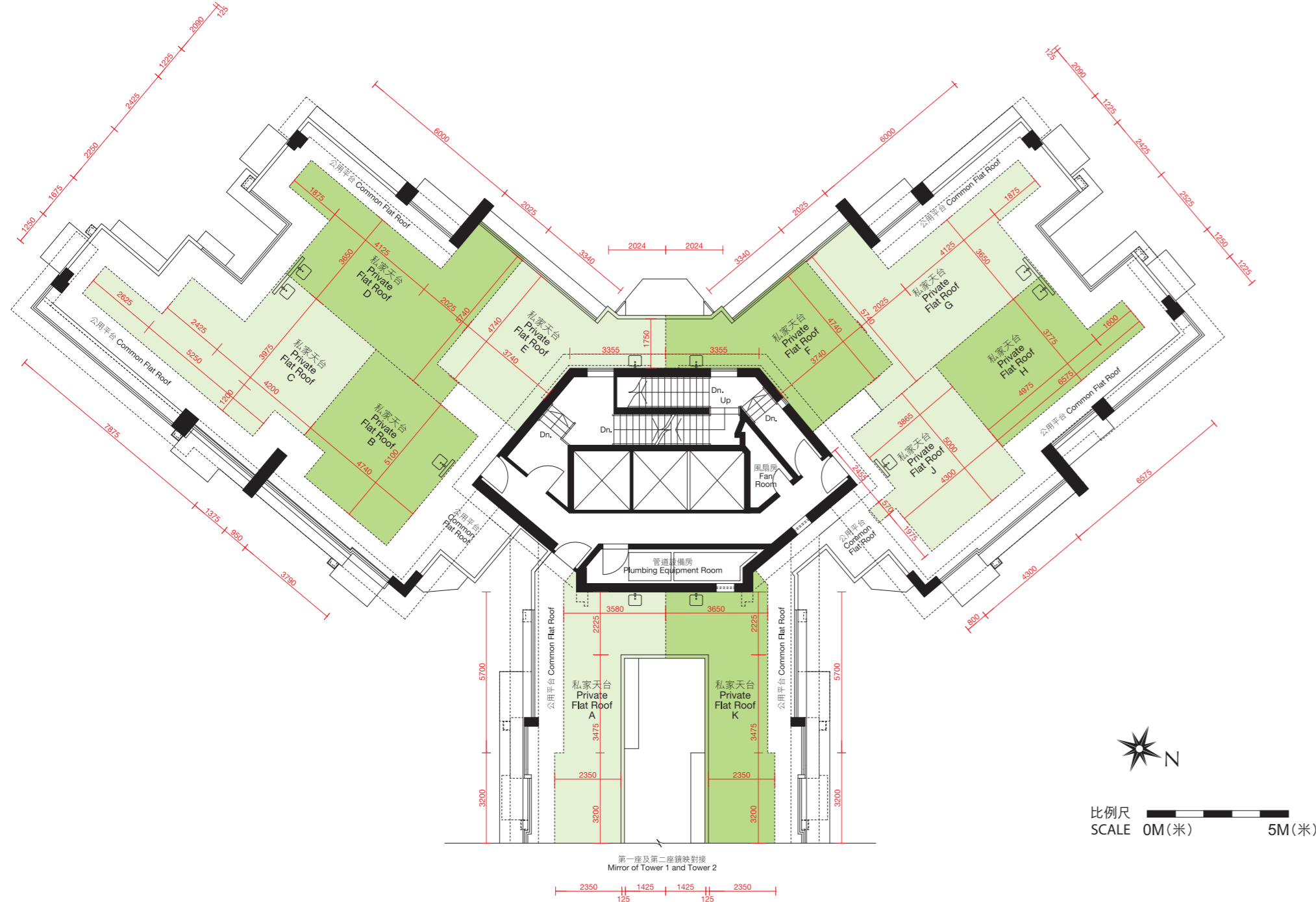
每個住宅物業 Each Residential Property	樓層 Floor	單位 Unit							
		B	C	D	E	F	G	H	J
樓板(不包括灰泥)的厚度(毫米) Thickness of Floor Slabs(excluding plaster)(mm)	21/F-22/F	125,150,250	150,250	150,250	125,150,175	125,150,175	150,250	150,250	125,150,250
層與層之間的高度(毫米) Floor-to-Floor Height(mm)		3150	3150	3150	3150	3150	3150	3150	3150

每個住宅物業 Each Residential Property	樓層 Floor	單位 Unit									
		A	B	C	D	E	F	G	H	J	K
樓板(不包括灰泥)的厚度(毫米) Thickness of Floor Slabs(excluding plaster)(mm)	23-27/F	150,200,250	125,150,250	150,250	150,250	125,150,175	125,150,175	150,250	150,250	125,150,250	125,150,250
層與層之間的高度(毫米) Floor-to-Floor Height(mm)		3150	3150	3150	3150	3150	3150	3150	3150	3150	3150
樓板(不包括灰泥)的厚度(毫米) Thickness of Floor Slabs(excluding plaster)(mm)	28/F	200,250	125,150,250	150,250	150,250	125,150,175	125,150,175	150,250	150,250	125,150,250	200,250
層與層之間的高度(毫米) Floor-to-Floor Height(mm)		3500	3500	3500	3500	3500	3500	3500	3500	3500	3500

因住宅物業的較高樓層的結構牆的厚度遞減，較高樓層的內部面積，一般比較低樓層的內部面積稍大。  
The internal areas of the residential properties on the upper floors will generally be slightly larger than those on the lower floors because of the reducing thickness of the structural walls on the upper floors.

因住宅物業的較高樓層的結構牆的厚度遞減，較高樓層的內部面積，一般比較低樓層的內部面積稍大。  
The internal areas of the residential properties on the upper floors will generally be slightly larger than those on the lower floors because of the reducing thickness of the structural walls on the upper floors.

天台平面圖 ROOF PLAN

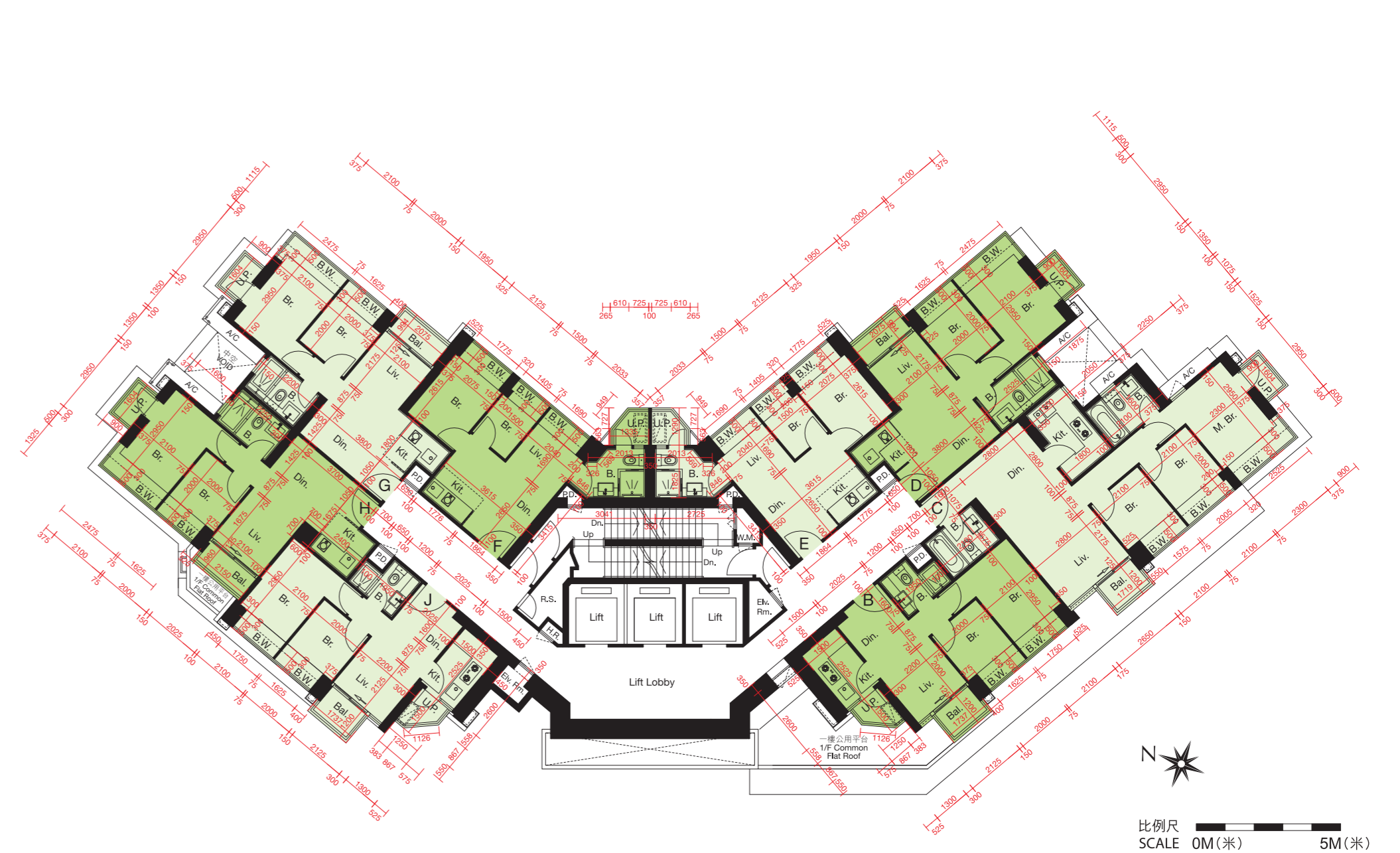


備註：平面圖之尺規所列數字為以毫米標示之建築結構尺寸。  
Note: The dimensions of floor plans are all structural dimensions in millimeter.

每個住宅物業 Each Residential Property	樓層 Floor	單位 Unit									
		A	B	C	D	E	F	G	H	J	K
樓板(不包括灰泥)的厚度(毫米) Thickness of Floor Slabs(excluding plaster)(mm)	天台 Roof	不適用 Not Applicable									
層與層之間的高度(毫米) Floor-to-Floor Height(mm)		不適用 Not Applicable									

因住宅物業的較高樓層的結構牆的厚度遞減，較高樓層的內部面積，一般比較低樓層的內部面積稍大。  
The internal areas of the residential properties on the upper floors will generally be slightly larger than those on the lower floors because of the reducing thickness of the structural walls on the upper floors.

一樓平面圖 1ST FLOOR PLAN



備註：1. 位於工作平台內之虛線方格 表示分體式冷氣的室外散熱機之安裝位置。  
2. 平面圖之尺規所列數字為以毫米標示之建築結構尺寸。  
Note: 1. Dotted-line box at the utility platform denotes the position of air-conditioning outdoor unit.  
2. The dimensions of floor plans are all structural dimensions in millimeter.

每個住宅物業 Each Residential Property	樓層 Floor	單位 Unit							
		B	C	D	E	F	G	H	J
樓板(不包括灰泥)的厚度(毫米) Thickness of Floor Slabs(excluding plaster)(mm)	1/F	125,150,250	150,250	150,250	125,150,175	125,150,175	150,250	150,250	125,150,250
層與層之間的高度(毫米) Floor-to-Floor Height(mm)		3150	3150	3150	3150	3150	3150	3150	3150

因住宅物業的較高樓層的結構牆的厚度遞減，較高樓層的內部面積，一般比較低樓層的內部面積稍大。  
The internal areas of the residential properties on the upper floors will generally be slightly larger than those on the lower floors because of the reducing thickness of the structural walls on the upper floors.

二樓至十二樓平面圖 2ND - 12TH FLOOR PLAN

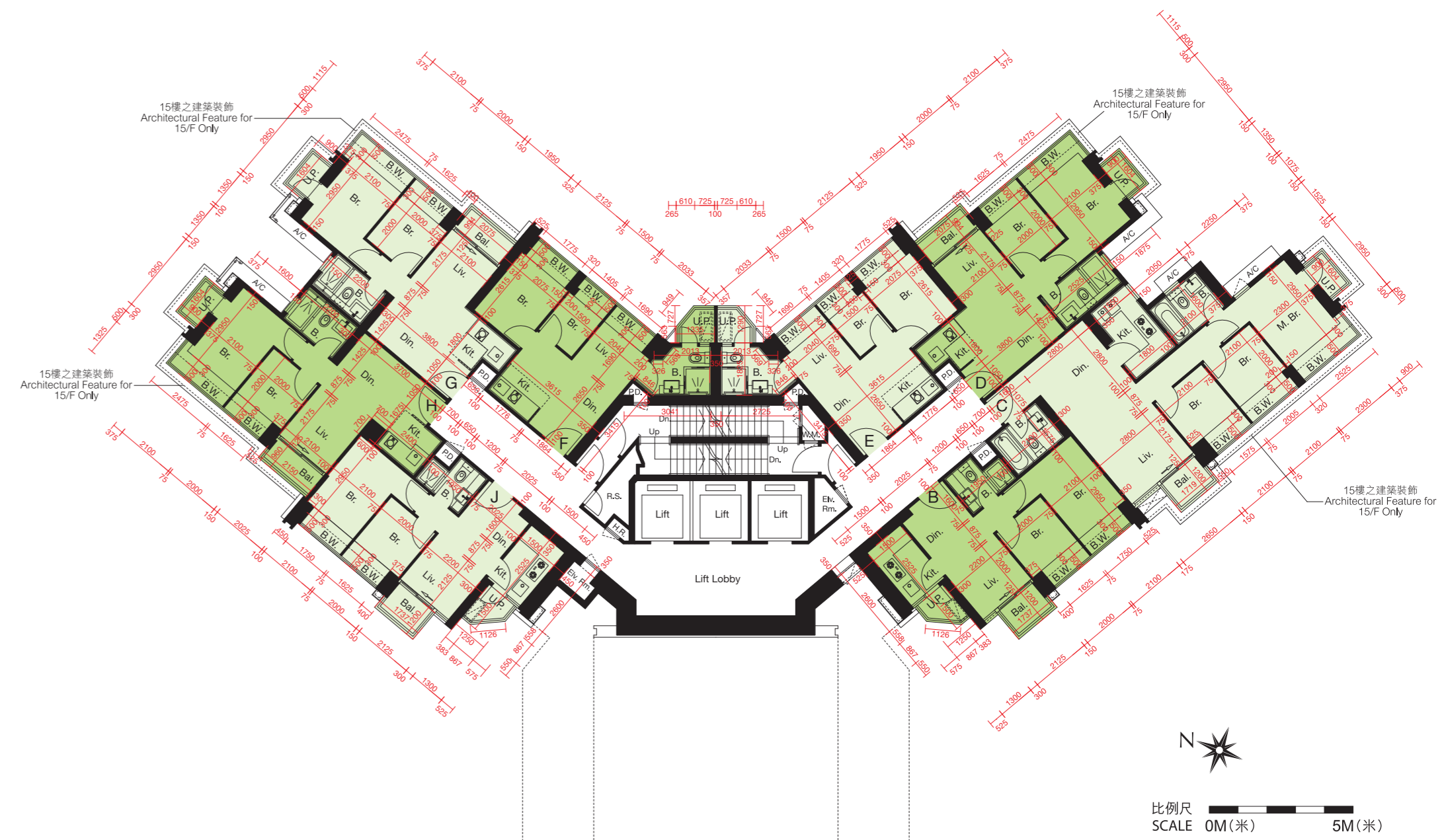


備註：1. 位於工作平台內之虛線方格 表示分體式冷氣的室外散熱機之安裝位置。  
2. 平面圖之尺規所列數字為以毫米標示之建築結構尺寸。  
Note: 1. Dotted-line box at the utility platform denotes the position of air-conditioning outdoor unit.  
2. The dimensions of floor plans are all structural dimensions in millimeter.

每個住宅物業 Each Residential Property	樓層 Floor	單位 Unit							
		B	C	D	E	F	G	H	J
樓板(不包括灰泥)的厚度(毫米) Thickness of Floor Slabs(excluding plaster)(mm)	2/F-12/F	125,150,250	150,250	150,250	125,150,175	125,150,175	150,250	150,250	125,150,250
層與層之間的高度(毫米) Floor-to-Floor Height(mm)		3150	3150	3150	3150	3150	3150	3150	3150

因住宅物業的較高樓層的結構牆的厚度遞減，較高樓層的內部面積，一般比較低樓層的內部面積稍大。  
The internal areas of the residential properties on the upper floors will generally be slightly larger than those on the lower floors because of the reducing thickness of the structural walls on the upper floors.

十五樓至十六樓平面圖 15TH - 16TH FLOOR PLAN



備註：1. 位於工作平台內之虛線方格 表示分體式冷氣的室外散熱機之安裝位置。  
2. 平面圖之尺規所列數字為以毫米標示之建築結構尺寸。  
Note: 1. Dotted-line box at the utility platform denotes the position of air-conditioning outdoor unit.  
2. The dimensions of floor plans are all structural dimensions in millimeter.

每個住宅物業 Each Residential Property	樓層 Floor	單位 Unit							
		B	C	D	E	F	G	H	J
樓板(不包括灰泥)的厚度(毫米) Thickness of Floor Slabs(excluding plaster)(mm)	15/F-16/F	125,150,250	150,250	150,250	125,150,175	125,150,175	150,250	150,250	125,150,250
層與層之間的高度(毫米) Floor-to-Floor Height(mm)		3150	3150	3150	3150	3150	3150	3150	3150

因住宅物業的較高樓層的結構牆的厚度遞減，較高樓層的內部面積，一般比較低樓層的內部面積稍大。  
The internal areas of the residential properties on the upper floors will generally be slightly larger than those on the lower floors because of the reducing thickness of the structural walls on the upper floors.

十七樓至十九樓平面圖 17TH - 19TH FLOOR PLAN

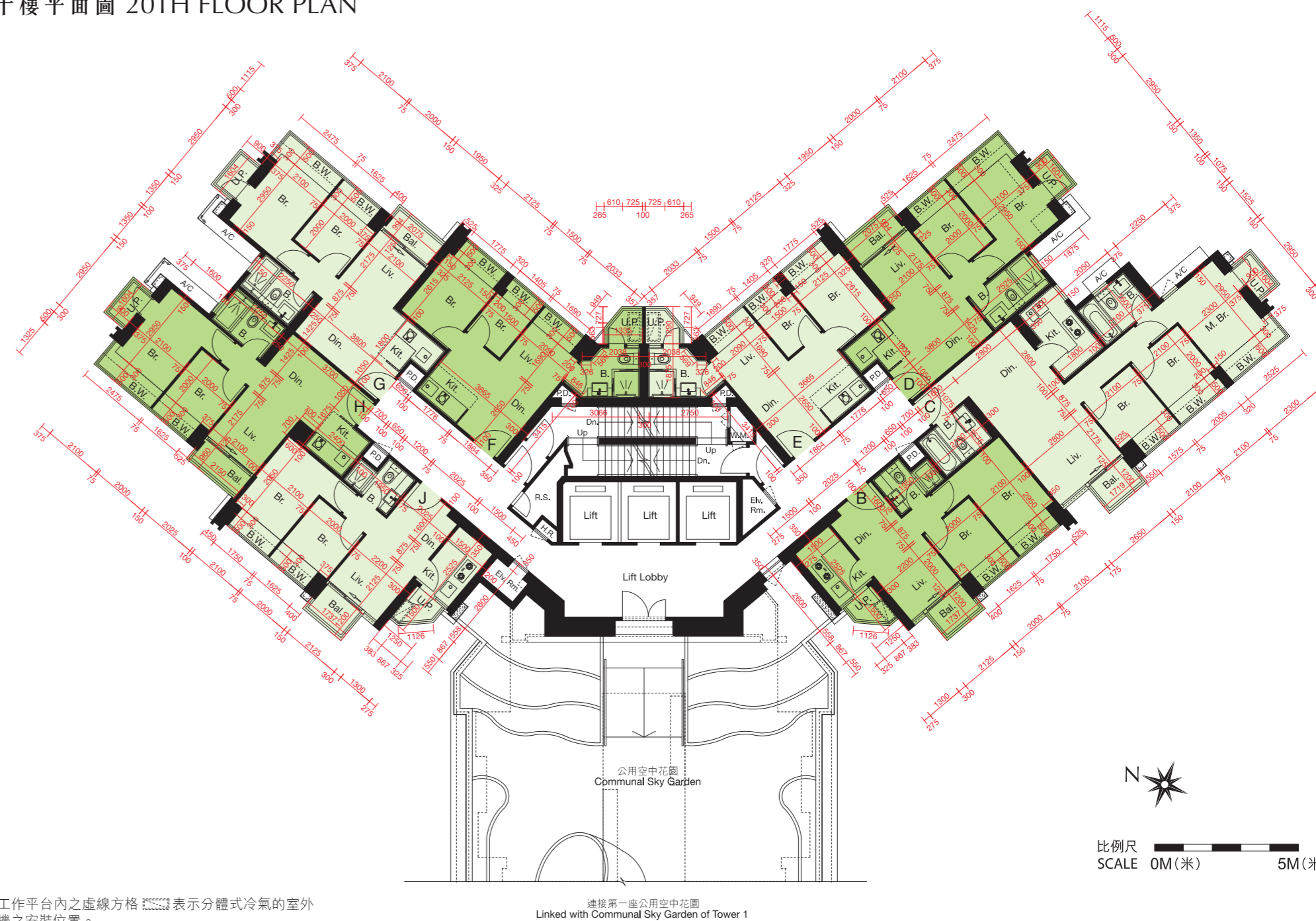


備註：1. 位於工作平台內之虛線方格 表示分體式冷氣的室外散熱機之安裝位置。  
2. 平面圖之尺規所列數字為以毫米標示之建築結構尺寸。  
Note: 1. Dotted-line box at the utility platform denotes the position of air-conditioning outdoor unit.  
2. The dimensions of floor plans are all structural dimensions in millimeter.

每個住宅物業 Each Residential Property	樓層 Floor	單位 Unit							
		B	C	D	E	F	G	H	J
樓板(不包括灰泥)的厚度(毫米) Thickness of Floor Slabs(excluding plaster)(mm)	17/F-19/F	125,150,250	150,250	150,250	125,150,175	125,150,175	150,250	150,250	125,150,250
層與層之間的高度(毫米) Floor-to-Floor Height(mm)		3150	3150	3150	3150	3150	3150	3150	3150

因住宅物業的較高樓層的結構牆的厚度遞減，較高樓層的內部面積，一般比較低樓層的內部面積稍大。  
The internal areas of the residential properties on the upper floors will generally be slightly larger than those on the lower floors because of the reducing thickness of the structural walls on the upper floors.

二十樓平面圖 20TH FLOOR PLAN



備註：1. 位於工作平台內之虛線方格 表示分體式冷氣的室外散熱機之安裝位置。  
2. 平面圖之尺規所列數字為以毫米標示之建築結構尺寸。  
Note: 1. Dotted-line box at the utility platform denotes the position of air-conditioning outdoor unit.  
2. The dimensions of floor plans are all structural dimensions in millimeter.

每個住宅物業 Each Residential Property	樓層 Floor	單位 Unit							
		B	C	D	E	F	G	H	J
樓板(不包括灰泥)的厚度(毫米) Thickness of Floor Slabs(excluding plaster)(mm)	20/F	125,150,250	150,250	150,250	125,150,175	125,150,175	150,250	150,250	125,150,250
層與層之間的高度(毫米) Floor-to-Floor Height(mm)		3150	3150	3150	3150	3150	3150	3150	3150

因住宅物業的較高樓層的結構牆的厚度遞減，較高樓層的內部面積，一般比較低樓層的內部面積稍大。  
The internal areas of the residential properties on the upper floors will generally be slightly larger than those on the lower floors because of the reducing thickness of the structural walls on the upper floors.

二十一樓至二十二樓平面圖 21ST - 22ND FLOOR PLAN

二十三樓至二十八樓平面圖 23RD - 28TH FLOOR PLAN



備註：1. 位於工作平台內之虛線方格 表示分體式冷氣的室外散熱機之安裝位置。  
2. 平面圖之尺規所列數字為以毫米標示之建築結構尺寸。  
Note: 1. Dotted-line box at the utility platform denotes the position of air-conditioning outdoor unit.  
2. The dimensions of floor plans are all structural dimensions in millimeter.

備註：1. 位於工作平台內之虛線方格 表示分體式冷氣的室外散熱機之安裝位置。  
2. 平面圖之尺規所列數字為以毫米標示之建築結構尺寸。  
Note: 1. Dotted-line box at the utility platform denotes the position of air-conditioning outdoor unit.  
2. The dimensions of floor plans are all structural dimensions in millimeter.

每個住宅物業 Each Residential Property	樓層 Floor	單位 Unit							
		B	C	D	E	F	G	H	J
樓板(不包括灰泥)的厚度(毫米) Thickness of Floor Slabs(excluding plaster)(mm)	21/F-22/F	125,150,250	150,250	150,250	125,150,175	125,150,175	150,250	150,250	125,150,250
層與層之間的高度(毫米) Floor-to-Floor Height(mm)		3150	3150	3150	3150	3150	3150	3150	3150

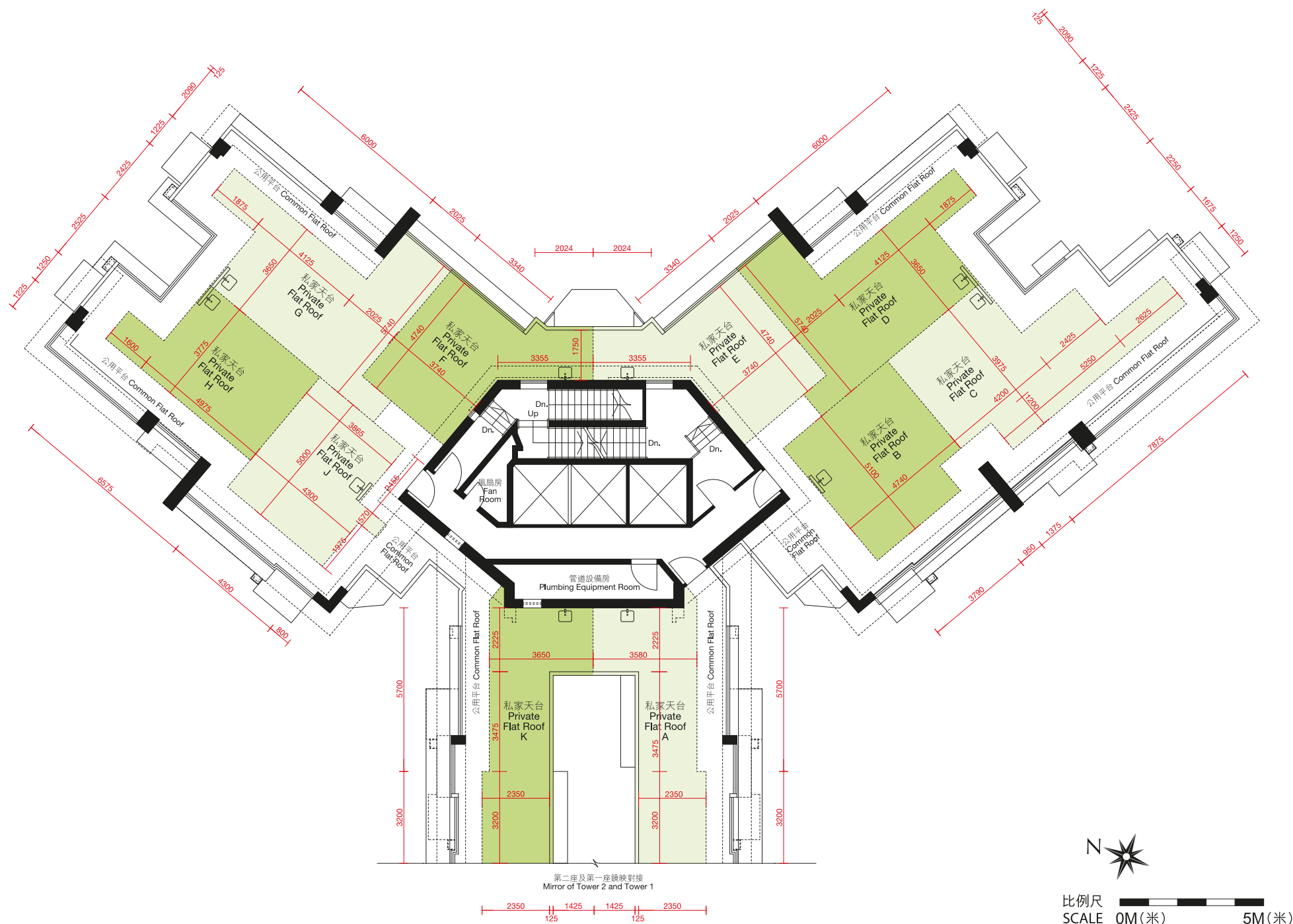
每個住宅物業 Each Residential Property	樓層 Floor	單位 Unit									
		A	B	C	D	E	F	G	H	J	K
樓板(不包括灰泥)的厚度(毫米) Thickness of Floor Slabs(excluding plaster)(mm)	23-27/F	150,200,250	125,150,250	150,250	150,250	125,150,175	125,150,175	150,250	150,250	125,150,250	125,150,250
層與層之間的高度(毫米) Floor-to-Floor Height(mm)		3150	3150	3150	3150	3150	3150	3150	3150	3150	3150
樓板(不包括灰泥)的厚度(毫米) Thickness of Floor Slabs(excluding plaster)(mm)	28/F	200,250	125,150,250	150,250	150,250	125,150,175	125,150,175	150,250	150,250	125,150,250	200,250
層與層之間的高度(毫米) Floor-to-Floor Height(mm)		3500	3500	3500	3500	3500	3500	3500	3500	3500	3500

因住宅物業的較高樓層的結構牆的厚度遞減，較高樓層的內部面積，一般比較低樓層的內部面積稍大。  
The internal areas of the residential properties on the upper floors will generally be slightly larger than those on the lower floors because of the reducing thickness of the structural walls on the upper floors.

因住宅物業的較高樓層的結構牆的厚度遞減，較高樓層的內部面積，一般比較低樓層的內部面積稍大。  
The internal areas of the residential properties on the upper floors will generally be slightly larger than those on the lower floors because of the reducing thickness of the structural walls on the upper floors.



天台平面圖 ROOF PLAN



備註：平面圖之尺規所列數字為以毫米標示之建築結構尺寸。

Note: The dimensions of floor plans are all structural dimensions in millimeter.

每個住宅物業 Each Residential Property	樓層 Floor	單位 Unit									
		A	B	C	D	E	F	G	H	J	K
樓板(不包括灰泥)的厚度(毫米) Thickness of Floor Slabs(excluding plaster)(mm)	天台 Roof	不適用 Not Applicable									
層與層之間的高度(毫米) Floor-to-Floor Height(mm)											

因住宅物業的較高樓層的結構牆的厚度遞減，較高樓層的內部面積，一般比較低樓層的內部面積稍大。  
The internal areas of the residential properties on the upper floors will generally be slightly larger than those on the lower floors because of the reducing thickness of the structural walls on the upper floors.