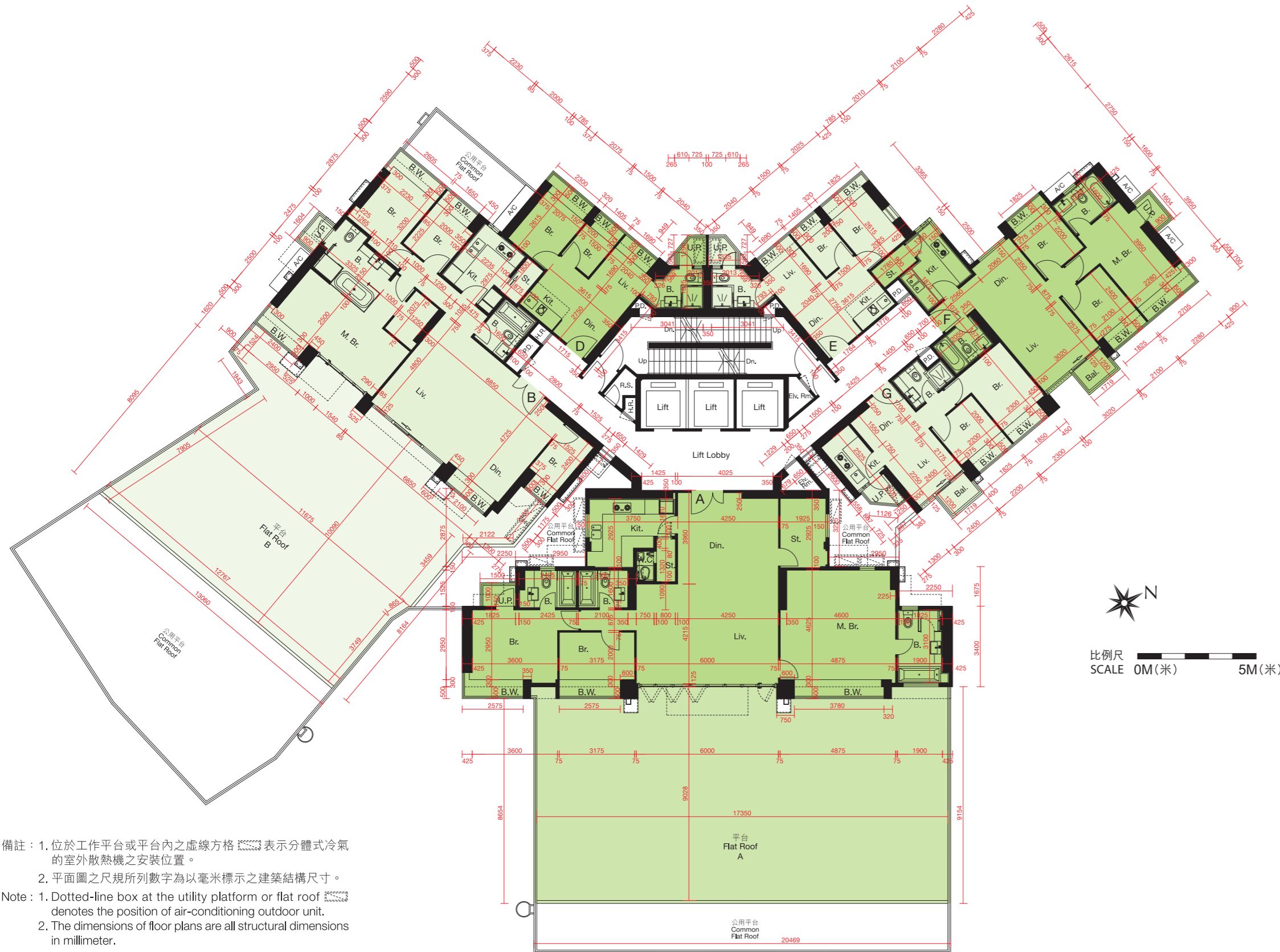
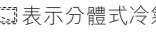
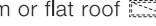


一樓平面圖 1ST FLOOR PLAN



備註：1. 位於工作平台或平台內之虛線方格  表示分體式冷氣的室外散熱機之安裝位置。

2. 平面圖之尺規所列數字為以毫米標示之建築結構尺寸。

Note: 1. Dotted-line box at the utility platform or flat roof  denotes the position of air-conditioning outdoor unit.

2. The dimensions of floor plans are all structural dimensions in millimeter.

一樓平面圖 1ST FLOOR PLAN

每個住宅物業 Each Residential Property	樓層 Floor	單位 Unit					
		A	B	D	E	F	G
樓板(不包括灰泥)的厚度(毫米) Thickness of Floor Slabs(excluding plaster)(mm)	1/F	125,150,225, 250	125,150,175, 250	125,150,175	125,150,175	150,175,250	125,150,250
層與層之間的高度(毫米) Floor-to-Floor Height(mm)		3150,3500	3150,3500	3500	3500	3500	3500

因住宅物業的較高樓層的結構牆的厚度遞減，較高樓層的內部面積，一般比較低樓層的內部面積稍大。
The internal areas of the residential properties on the upper floors will generally be slightly larger than those on the lower floors because of the reducing thickness of the structural walls on the upper floors.

二樓至十六樓平面圖 2ND - 16TH FLOOR PLAN

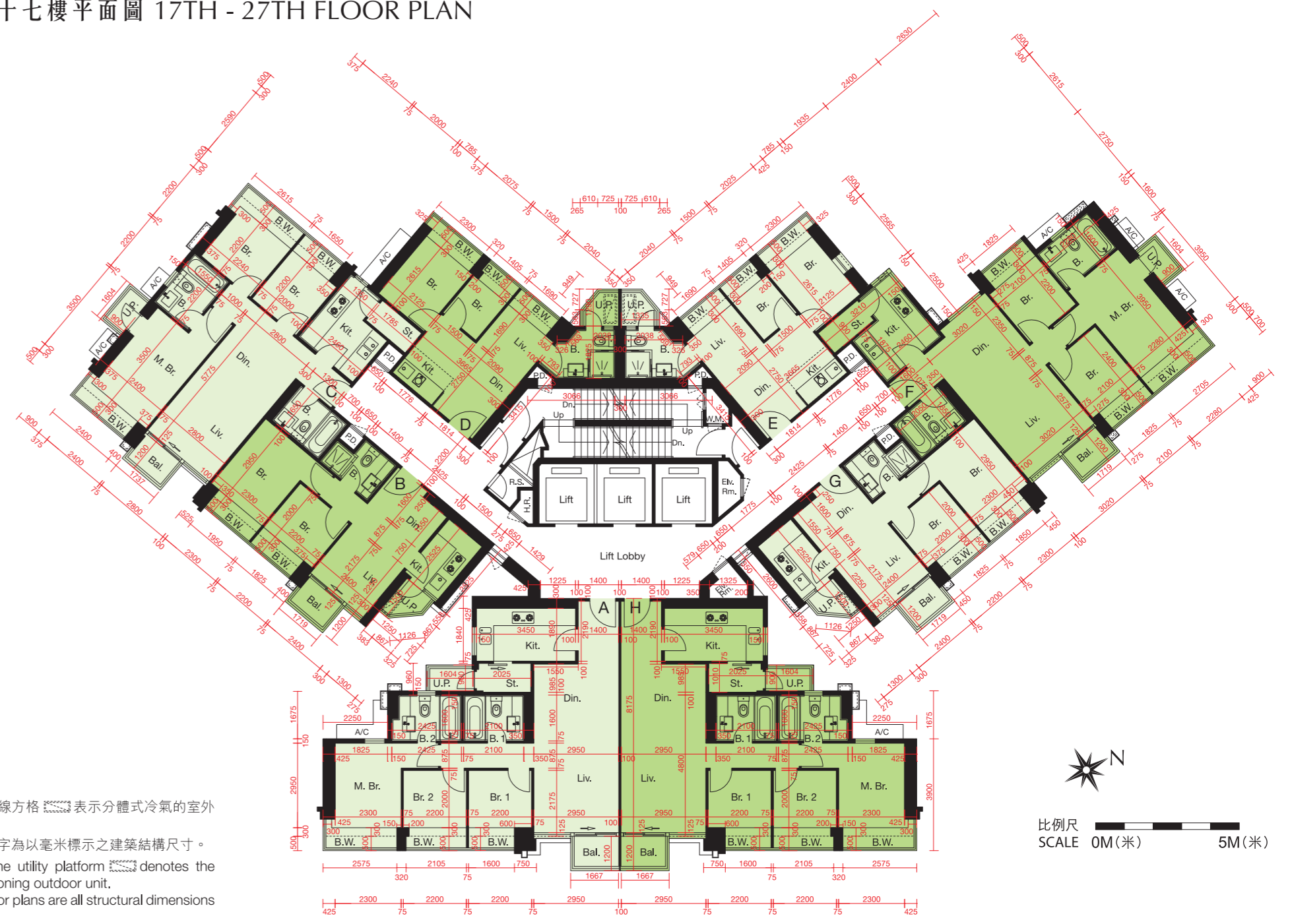


備註：1. 位於工作平台內之虛線方格 表示分體式冷氣的室外散熱機之安裝位置。
2. 平面圖之尺規所列數字為以毫米標示之建築結構尺寸。
Note: 1. Dotted-line box at the utility platform denotes the position of air-conditioning outdoor unit.
2. The dimensions of floor plans are all structural dimensions in millimeter.

每個住宅物業 Each Residential Property	樓層 Floor	單位 Unit							
		A	B	C	D	E	F	G	H
樓板(不包括灰泥)的厚度(毫米) Thickness of Floor Slabs(excluding plaster)(mm)	2/F-16/F	125,150,225,250	125,150,250	150,250	125,150,175	125,150,175	150,175,250	125,150,250	125,150,225,250
層與層之間的高度(毫米) Floor-to-Floor Height(mm)		3150	3150	3150	3150	3150	3150	3150	3150

因住宅物業的較高樓層的結構牆的厚度遞減，較高樓層的內部面積，一般比較低樓層的內部面積稍大。
The internal areas of the residential properties on the upper floors will generally be slightly larger than those on the lower floors because of the reducing thickness of the structural walls on the upper floors.

十七樓至二十七樓平面圖 17TH - 27TH FLOOR PLAN

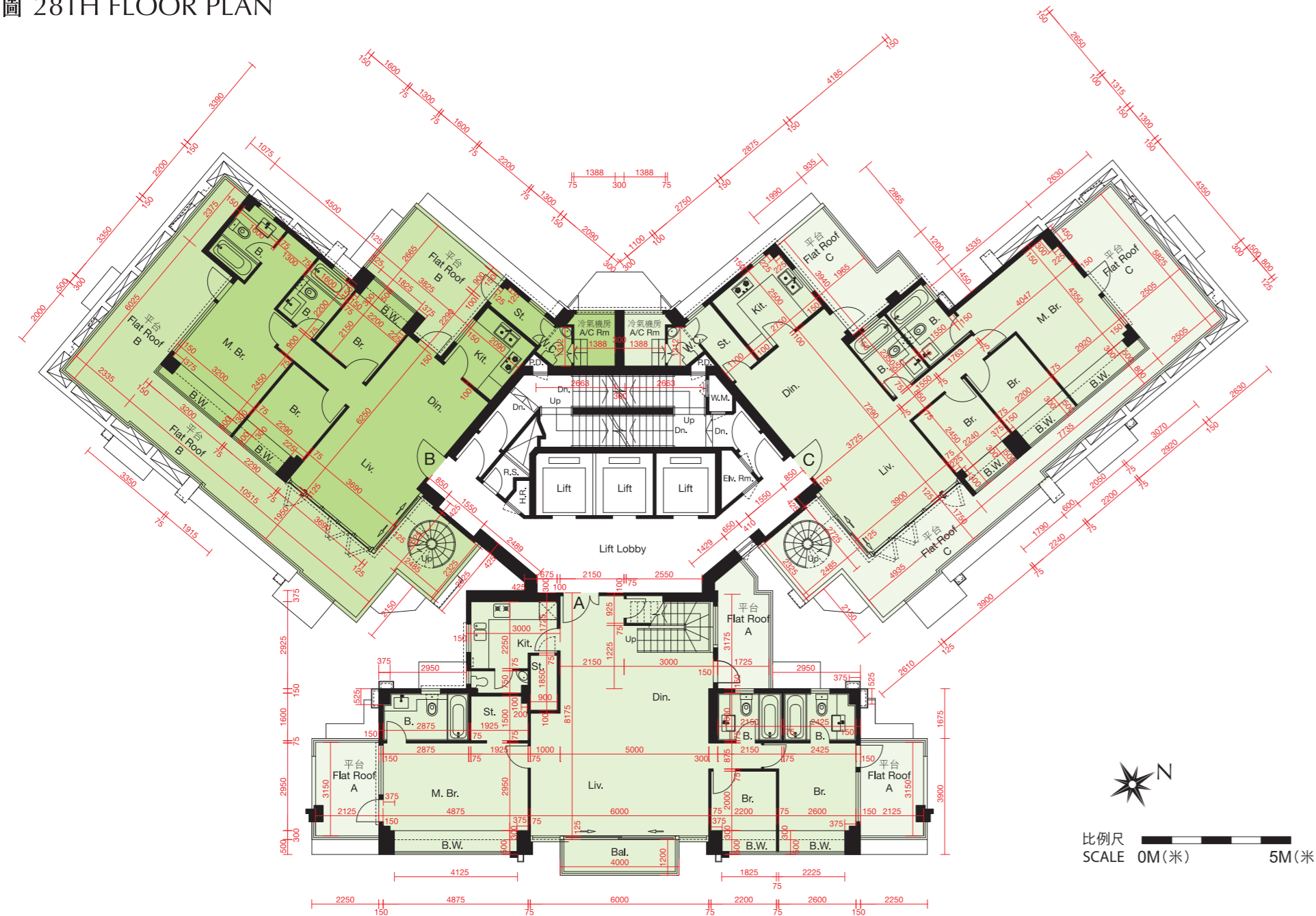


備註：1. 位於工作平台內之虛線方格 表示分體式冷氣的室外散熱機之安裝位置。
2. 平面圖之尺規所列數字為以毫米標示之建築結構尺寸。
Note: 1. Dotted-line box at the utility platform denotes the position of air-conditioning outdoor unit.
2. The dimensions of floor plans are all structural dimensions in millimeter.

每個住宅物業 Each Residential Property	樓層 Floor	單位 Unit							
		A	B	C	D	E	F	G	H
樓板(不包括灰泥)的厚度(毫米) Thickness of Floor Slabs(excluding plaster)(mm)	17/F-26/F	125,150,225,250	125,150,250	150,250	125,150,175	125,150,175	150,175,250	125,150,250	125,150,225,250
層與層之間的高度(毫米) Floor-to-Floor Height(mm)		3150	3150	3150	3150	3150	3150	3150	3150
樓板(不包括灰泥)的厚度(毫米) Thickness of Floor Slabs(excluding plaster)(mm)	27/F	150,225,250	150,200,250,450	150,250,450	125,150,175,450	125,150,175	150,250,450	150,200,250	150,225,250
層與層之間的高度(毫米) Floor-to-Floor Height(mm)		3150,3200,3500	3200,3500	3150,3200,3500	3200,3500	3200,3500	3150,3200,3500	3150,3200,3500	3150,3200,3500

因住宅物業的較高樓層的結構牆的厚度遞減，較高樓層的內部面積，一般比較低樓層的內部面積稍大。
The internal areas of the residential properties on the upper floors will generally be slightly larger than those on the lower floors because of the reducing thickness of the structural walls on the upper floors.

二十八樓平面圖 28TH FLOOR PLAN

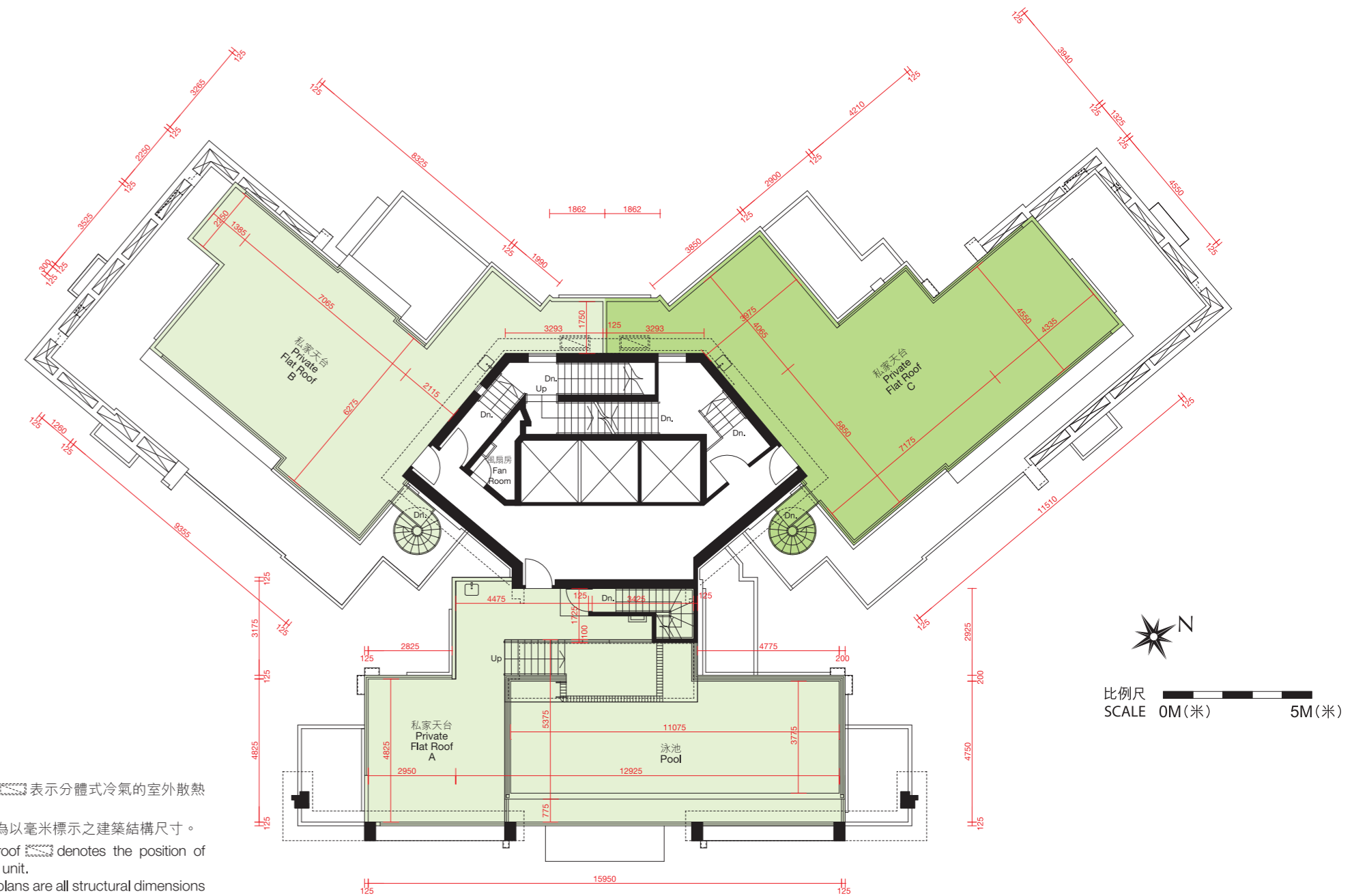


備註：平面圖之尺規所列數字為以毫米標示之建築結構尺寸。
Note: The dimensions of floor plans are all structural dimensions in millimeter.

每個住宅物業 Each Residential Property	樓層 Floor	單位 Unit		
		A	B	C
樓板(不包括灰泥)的厚度(毫米) Thickness of Floor Slabs(excluding plaster)(mm)	28/F	175,225,250	125,150	125,150,175
層與層之間的高度(毫米) Floor-to-Floor Height (mm)		3500	3500	3500

因住宅物業的較高樓層的結構牆的厚度遞減，較高樓層的內部面積，一般比較低樓層的內部面積稍大。
The internal areas of the residential properties on the upper floors will generally be slightly larger than those on the lower floors because of the reducing thickness of the structural walls on the upper floors.

天台平面圖 ROOF PLAN



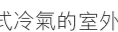
備註：1. 位於天台內之虛線方格 表示分體式冷氣的室外散熱機之安裝位置。
2. 平面圖之尺規所列數字為以毫米標示之建築結構尺寸。
Note: 1. Dotted-line box at the roof denotes the position of air-conditioning outdoor unit.
2. The dimensions of floor plans are all structural dimensions in millimeter.

每個住宅物業 Each Residential Property	樓層 Floor	單位 Unit		
		A	B	C
樓板(不包括灰泥)的厚度(毫米) Thickness of Floor Slabs(excluding plaster)(mm)	天台 Roof	不適用 Not Applicable		
層與層之間的高度(毫米) Floor-to-Floor Height(mm)		不適用 Not Applicable		

因住宅物業的較高樓層的結構牆的厚度遞減，較高樓層的內部面積，一般比較低樓層的內部面積稍大。
The internal areas of the residential properties on the upper floors will generally be slightly larger than those on the lower floors because of the reducing thickness of the structural walls on the upper floors.

二樓平面圖 2ND FLOOR PLAN



備註：1. 位於工作平台內之虛線方格  表示分體式冷氣的室外散熱機之安裝位置。

2. 平面圖之尺規所列數字為以毫米標示之建築結構尺寸。

Note: 1. Dotted-line box at the utility platform  denotes the position of air-conditioning outdoor unit.

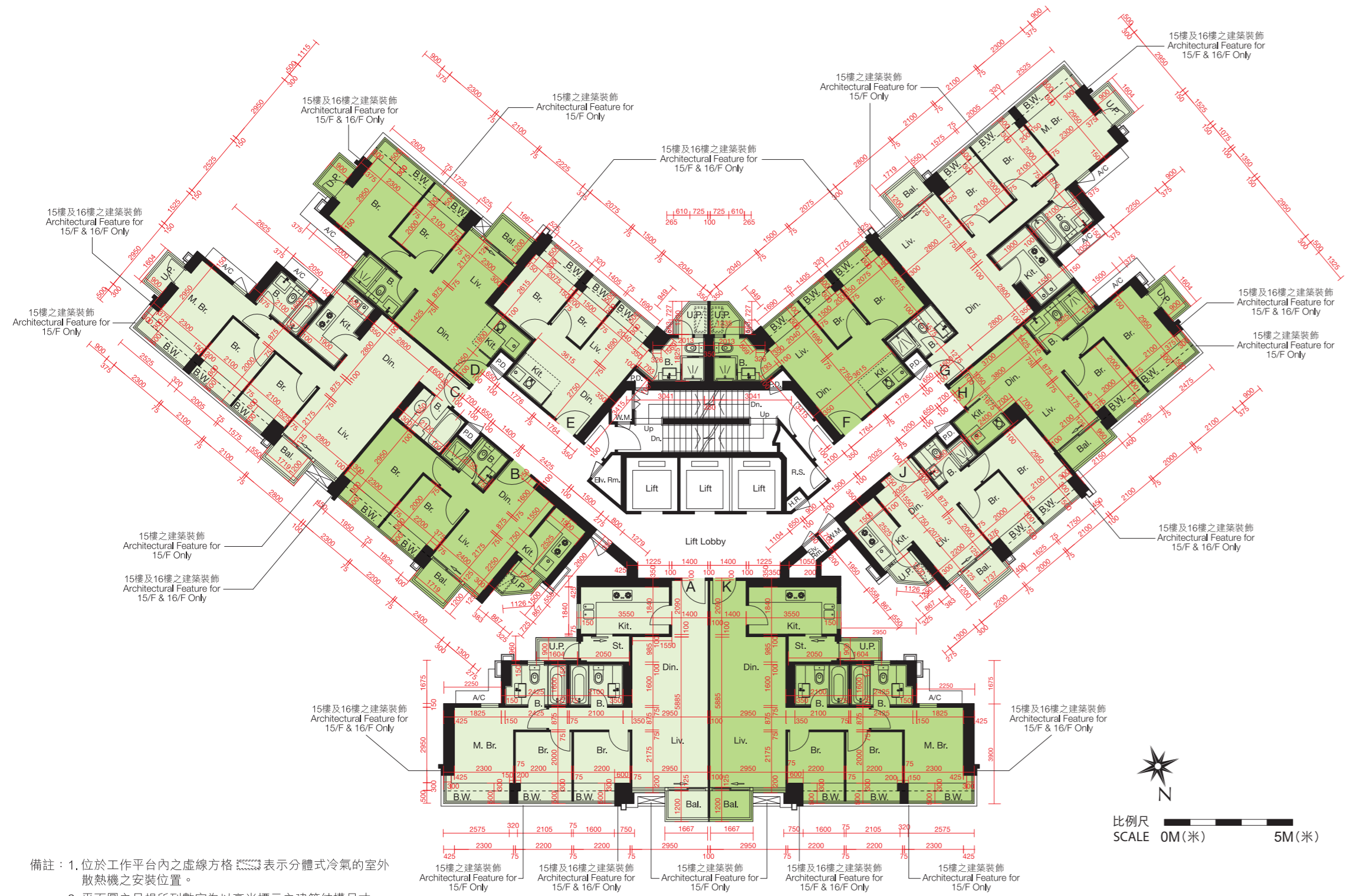
2. The dimensions of floor plans are all structural dimensions in millimeter.

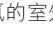

二樓平面圖 2ND FLOOR PLAN

每個住宅物業 Each Residential Property	樓層 Floor	單位 Unit									
		A	B	C	D	E	F	G	H	J	K
樓板(不包括灰泥)的厚度(毫米) Thickness of Floor Slabs(excluding plaster)(mm)	2/F	125,150,225, 250	125,150,250	150,250	150,250	125,150,175	125,150,175	150,250	150,250	125,150,250	125,150,225, 250
層與層之間的高度(毫米) Floor-to-Floor Height(mm)		3150	3150	3150	3150	3150	3150	3150	3150	3150	3150

因住宅物業的較高樓層的結構牆的厚度遞減，較高樓層的內部面積，一般比較低樓層的內部面積稍大。
The internal areas of the residential properties on the upper floors will generally be slightly larger than those on the lower floors because of the reducing thickness of the structural walls on the upper floors.

三樓至十六樓平面圖 3RD - 16TH FLOOR PLAN



備註：1. 位於工作平台內之虛線方格  表示分體式冷氣的室外散熱機之安裝位置。
 2. 平面圖之尺規所列數字為以毫米標示之建築結構尺寸。
 Note: 1. Dotted-line box at the utility platform  denotes the position of air-conditioning outdoor unit.
 2. The dimensions of floor plans are all structural dimensions in millimeter.

三樓至十六樓平面圖 3RD - 16TH FLOOR PLAN

每個住宅物業 Each Residential Property	樓層 Floor	單位 Unit									
		A	B	C	D	E	F	G	H	J	K
樓板(不包括灰泥)的厚度(毫米) Thickness of Floor Slabs(excluding plaster)(mm)	3/F-16/F	125,150,225,250	125,150,250	150,250	150,250	125,150,175	125,150,175	150,250	150,250	125,150,250	125,150,225,250
層與層之間的高度(毫米) Floor-to-Floor Height(mm)		3150	3150	3150	3150	3150	3150	3150	3150	3150	3150

因住宅物業的較高樓層的結構牆的厚度遞減，較高樓層的內部面積，一般比較低樓層的內部面積稍大。
 The internal areas of the residential properties on the upper floors will generally be slightly larger than those on the lower floors because of the reducing thickness of the structural walls on the upper floors.

十七樓至二十八樓平面圖 17TH - 28TH FLOOR PLAN

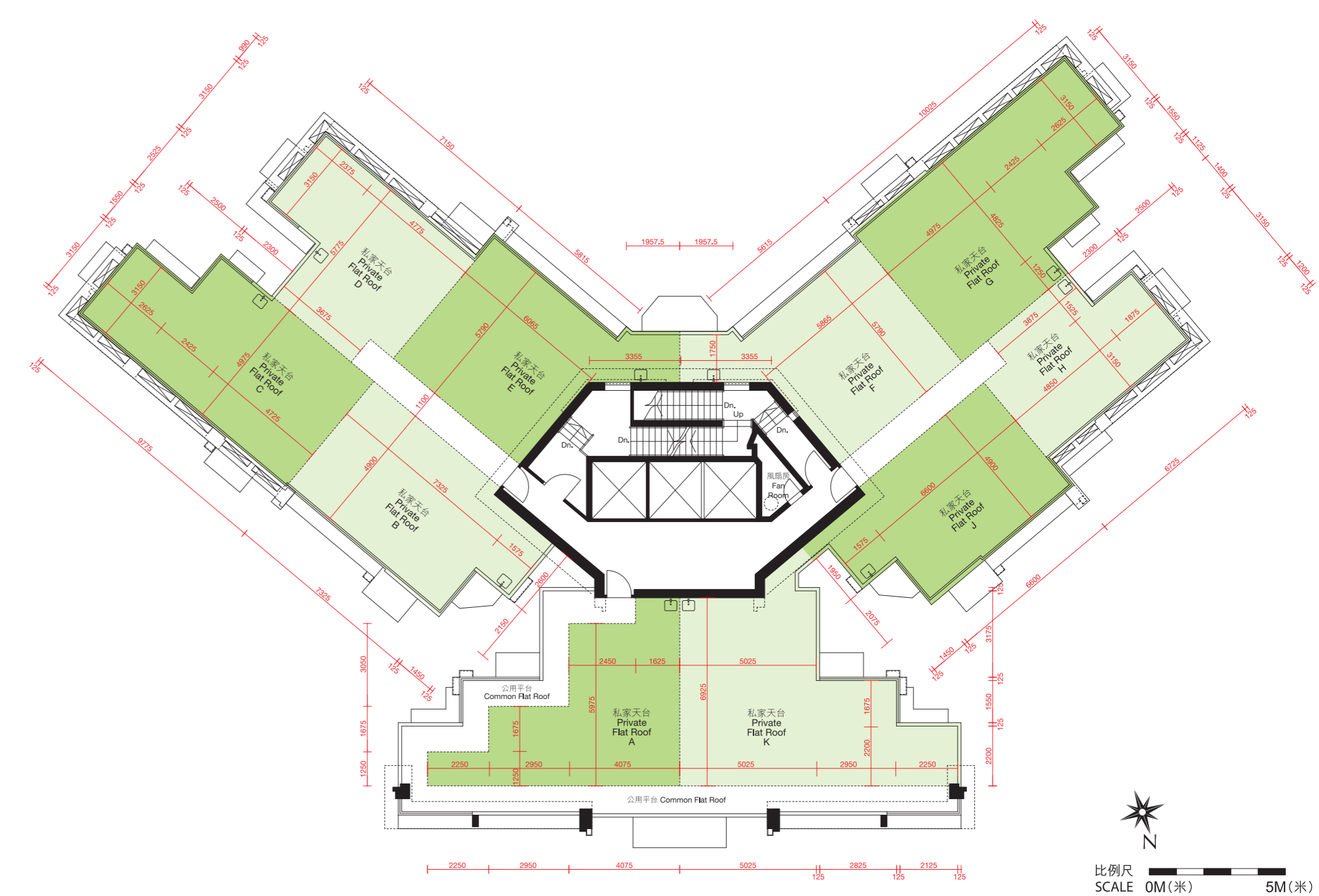


備註：1. 位於工作平台內之虛線方格 表示分體式冷氣的室外散熱機之安裝位置。
2. 平面圖之尺規所列數字為以毫米標示之建築結構尺寸。
Note: 1. Dotted-line box at the utility platform denotes the position of air-conditioning outdoor unit.
2. The dimensions of floor plans are all structural dimensions in millimeter.

每個住宅物業 Each Residential Property	樓層 Floor	單位 Unit									
		A	B	C	D	E	F	G	H	J	K
樓板(不包括灰泥)的厚度(毫米) Thickness of Floor Slabs(excluding plaster)(mm)	17/F-27/F	125,150,225,250	125,150,250	150,250	150,250	125,150,175	125,150,175	150,250	150,250	125,150,250	125,150,225,250
層與層之間的高度(毫米) Floor-to-Floor Height(mm)		3150	3150	3150	3150	3150	3150	3150	3150	3150	3150
樓板(不包括灰泥)的厚度(毫米) Thickness of Floor Slabs(excluding plaster)(mm)	28/F	125,150,225,250	125,150,250	150,250	150,250	125,150,175	125,150,175	150,250	150,250	125,150,250	125,150,225,250
層與層之間的高度(毫米) Floor-to-Floor Height(mm)		3500	3500	3500	3500	3500	3500	3500	3500	3500	3500

因住宅物業的較高樓層的結構牆的厚度遞減，較高樓層的內部面積，一般比較低樓層的內部面積稍大。
The internal areas of the residential properties on the upper floors will generally be slightly larger than those on the lower floors because of the reducing thickness of the structural walls on the upper floors.

天台平面圖 ROOF PLAN



備註：平面圖之尺規所列數字為以毫米標示之建築結構尺寸。
Note: The dimensions of floor plans are all structural dimensions in millimeter.

每個住宅物業 Each Residential Property	樓層 Floor	單位 Unit									
		A	B	C	D	E	F	G	H	J	K
樓板(不包括灰泥)的厚度(毫米) Thickness of Floor Slabs(excluding plaster)(mm)	天台 Roof	不適用 Not Applicable									
層與層之間的高度(毫米) Floor-to-Floor Height(mm)		不適用 Not Applicable									

因住宅物業的較高樓層的結構牆的厚度遞減，較高樓層的內部面積，一般比較低樓層的內部面積稍大。
The internal areas of the residential properties on the upper floors will generally be slightly larger than those on the lower floors because of the reducing thickness of the structural walls on the upper floors.