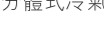



一樓平面圖 1ST FLOOR PLAN



備註：1. 位於工作平台內之虛線方格  表示分體式冷氣的室外散熱機之安裝位置。
 2. 平面圖之尺規所列數字為以毫米標示之建築結構尺寸。
 Note: 1. Dotted-line box at the utility platform  denotes the position of air-conditioning outdoor unit.
 2. The dimensions of floor plans are all structural dimensions in millimeter.

一樓平面圖 1ST FLOOR PLAN

每個住宅物業 Each Residential Property	樓層 Floor	單位 Unit					
		A	B	D	E	G	H
樓板(不包括灰泥)的厚度(毫米) Thickness of Floor Slabs(excluding plaster)(mm)	1/F	150,250,250, 325	150,175,250	125,150,175	125,150,175	150,175,250	150,175,250, 325
層與層之間的高度(毫米) Floor-to-Floor Height(mm)		3325, 3500	3150, 3500	3500	3500	3150, 3500	3325, 3500

因住宅物業的較高樓層的結構牆的厚度遞減，較高樓層的內部面積，一般比較低樓層的內部面積稍大。
 The internal areas of the residential properties on the upper floors will generally be slightly larger than those on the lower floors because of the reducing thickness of the structural walls on the upper floors.

二樓平面圖 2ND FLOOR PLAN



備註：1. 位於工作平台內之虛線方格 表示分體式冷氣的室外散熱機之安裝位置。
2. 平面圖之尺規所列數字為以毫米標示之建築結構尺寸。
Note: 1. Dotted-line box at the utility platform denotes the position of air-conditioning outdoor unit.
2. The dimensions of floor plans are all structural dimensions in millimeter.

每個住宅物業 Each Residential Property	樓層 Floor	單位 Unit							
		A	B	C	D	E	F	G	H
樓板(不包括灰泥)的厚度(毫米) Thickness of Floor Slabs(excluding plaster)(mm)	2/F	150,175,250	125,150,250	150,250	125,150,175	125,150,175	150,250	125,150,250	150,250
層與層之間的高度(毫米) Floor-to-Floor Height(mm)		3150	3150	3150	3150	3150	3150	3150	3150

因住宅物業的較高樓層的結構牆的厚度遞減，較高樓層的內部面積，一般比較低樓層的內部面積稍大。
The internal areas of the residential properties on the upper floors will generally be slightly larger than those on the lower floors because of the reducing thickness of the structural walls on the upper floors.

三樓至十六樓平面圖 3RD - 16TH FLOOR PLAN

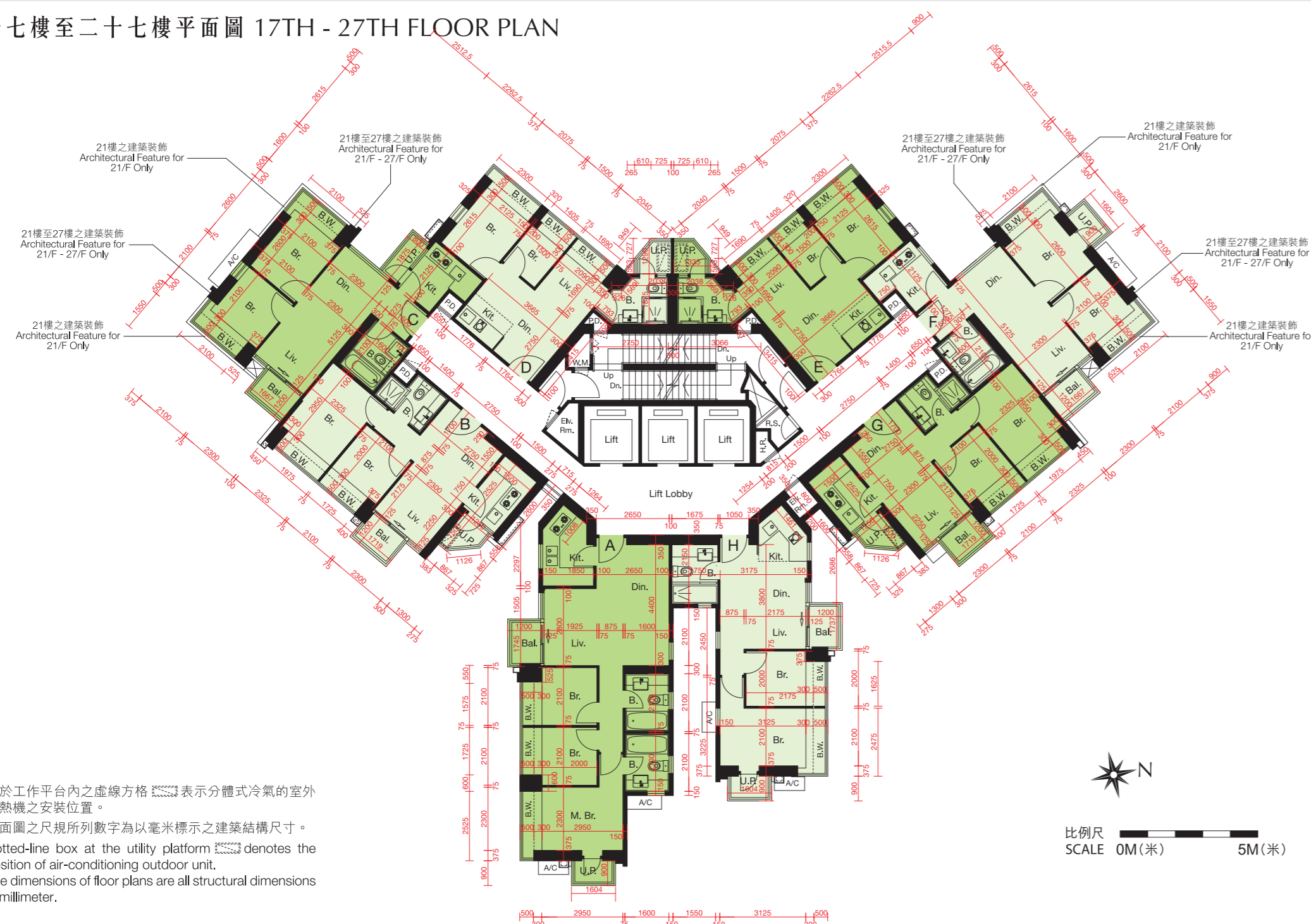


備註：1. 位於工作平台內之虛線方格 表示分體式冷氣的室外散熱機之安裝位置。
2. 平面圖之尺規所列數字為以毫米標示之建築結構尺寸。
Note: 1. Dotted-line box at the utility platform denotes the position of air-conditioning outdoor unit.
2. The dimensions of floor plans are all structural dimensions in millimeter.

每個住宅物業 Each Residential Property	樓層 Floor	單位 Unit							
		A	B	C	D	E	F	G	H
樓板(不包括灰泥)的厚度(毫米) Thickness of Floor Slabs(excluding plaster)(mm)	3/F-16/F	150,175,250	125,150,250	150,250	125,150,175	125,150,175	150,250	125,150,250	150,250
層與層之間的高度(毫米) Floor-to-Floor Height(mm)		3150	3150	3150	3150	3150	3150	3150	3150

因住宅物業的較高樓層的結構牆的厚度遞減，較高樓層的內部面積，一般比較低樓層的內部面積稍大。
The internal areas of the residential properties on the upper floors will generally be slightly larger than those on the lower floors because of the reducing thickness of the structural walls on the upper floors.

十七樓至二十七樓平面圖 17TH - 27TH FLOOR PLAN



備註：1. 位於工作平台內之虛線方格 表示分體式冷氣的室外散熱機之安裝位置。
2. 平面圖之尺規所列數字為以毫米標示之建築結構尺寸。
Note: 1. Dotted-line box at the utility platform denotes the position of air-conditioning outdoor unit.
2. The dimensions of floor plans are all structural dimensions in millimeter.

每個住宅物業 Each Residential Property	樓層 Floor	單位 Unit							
		A	B	C	D	E	F	G	H
樓板(不包括灰泥)的厚度(毫米) Thickness of Floor Slabs(excluding plaster)(mm)	17/F-26/F	150,175,250	125,150,250	150,250	125,150,175	125,150,175	150,250	125,150,250	150,250
層與層之間的高度(毫米) Floor-to-Floor Height(mm)		3150	3150	3150	3150	3150	3150	3150	3150
樓板(不包括灰泥)的厚度(毫米) Thickness of Floor Slabs(excluding plaster)(mm)	27/F	150,175,250	150,200,250	150,250	125,150,175	125,150,175	150,250	150,200,250	150,250
層與層之間的高度(毫米) Floor-to-Floor Height(mm)		3200, 3500	3200, 3500	3150, 3200, 3500	3200, 3500	3200, 3500	3150, 3200, 3500	3200, 3500	3200, 3500

因住宅物業的較高樓層的結構牆的厚度遞減，較高樓層的內部面積，一般比較低樓層的內部面積稍大。
The internal areas of the residential properties on the upper floors will generally be slightly larger than those on the lower floors because of the reducing thickness of the structural walls on the upper floors.

二十八樓平面圖 28TH FLOOR PLAN

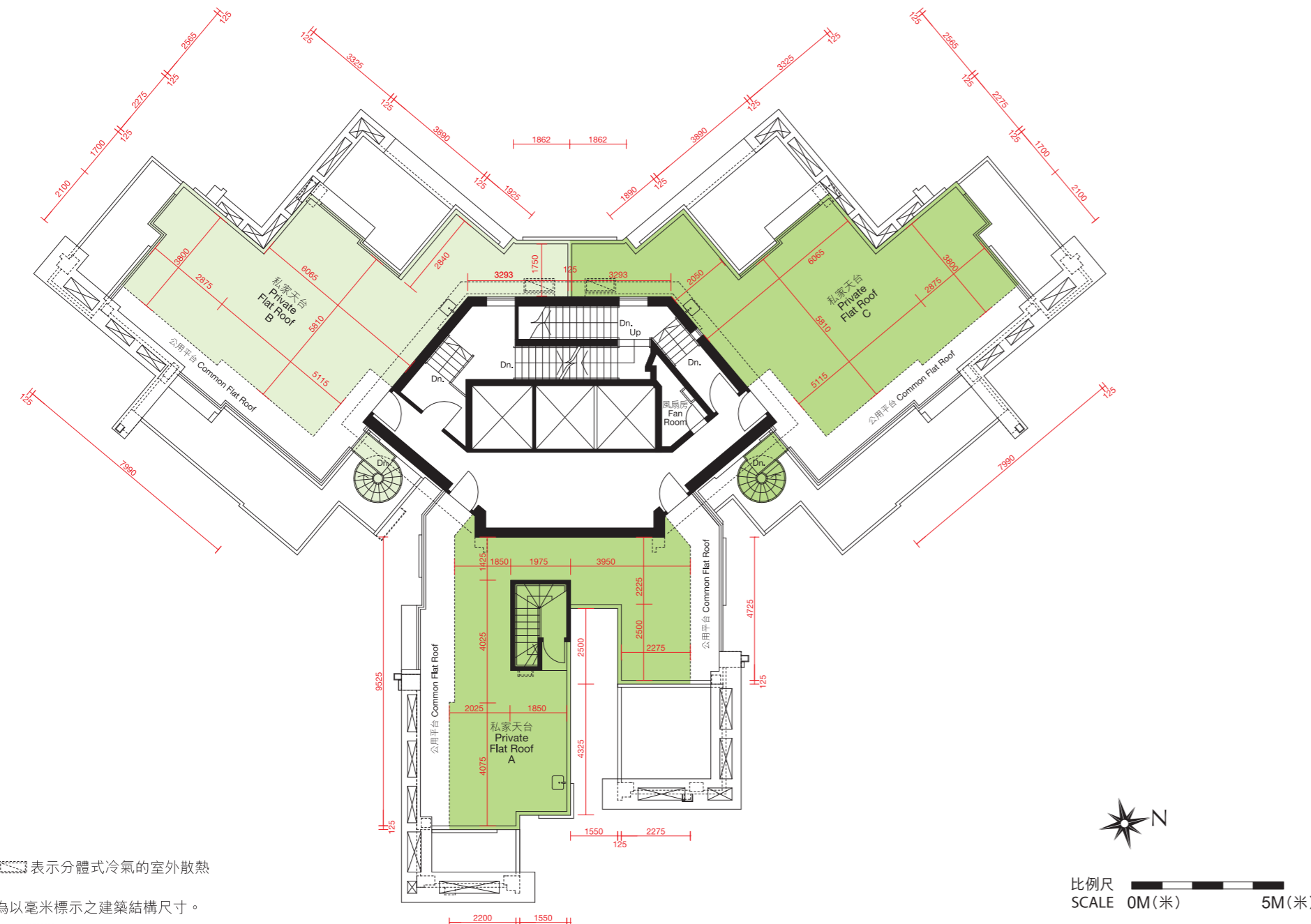


備註：平面圖之尺規所列數字為以毫米標示之建築結構尺寸。
Note: The dimensions of floor plans are all structural dimensions in millimeter.

每個住宅物業 Each Residential Property	樓層 Floor	單位 Unit		
		A	B	C
樓板(不包括灰泥)的厚度(毫米) Thickness of Floor Slabs (excluding plaster)(mm)	28/F	150,175	125,175,225	125,175,225
層與層之間的高度(毫米) Floor-to-Floor Height (mm)		3500	3500	3500

因住宅物業的較高樓層的結構牆的厚度遞減，較高樓層的內部面積，一般比較低樓層的內部面積稍大。
The internal areas of the residential properties on the upper floors will generally be slightly larger than those on the lower floors because of the reducing thickness of the structural walls on the upper floors.

天台平面圖 ROOF PLAN

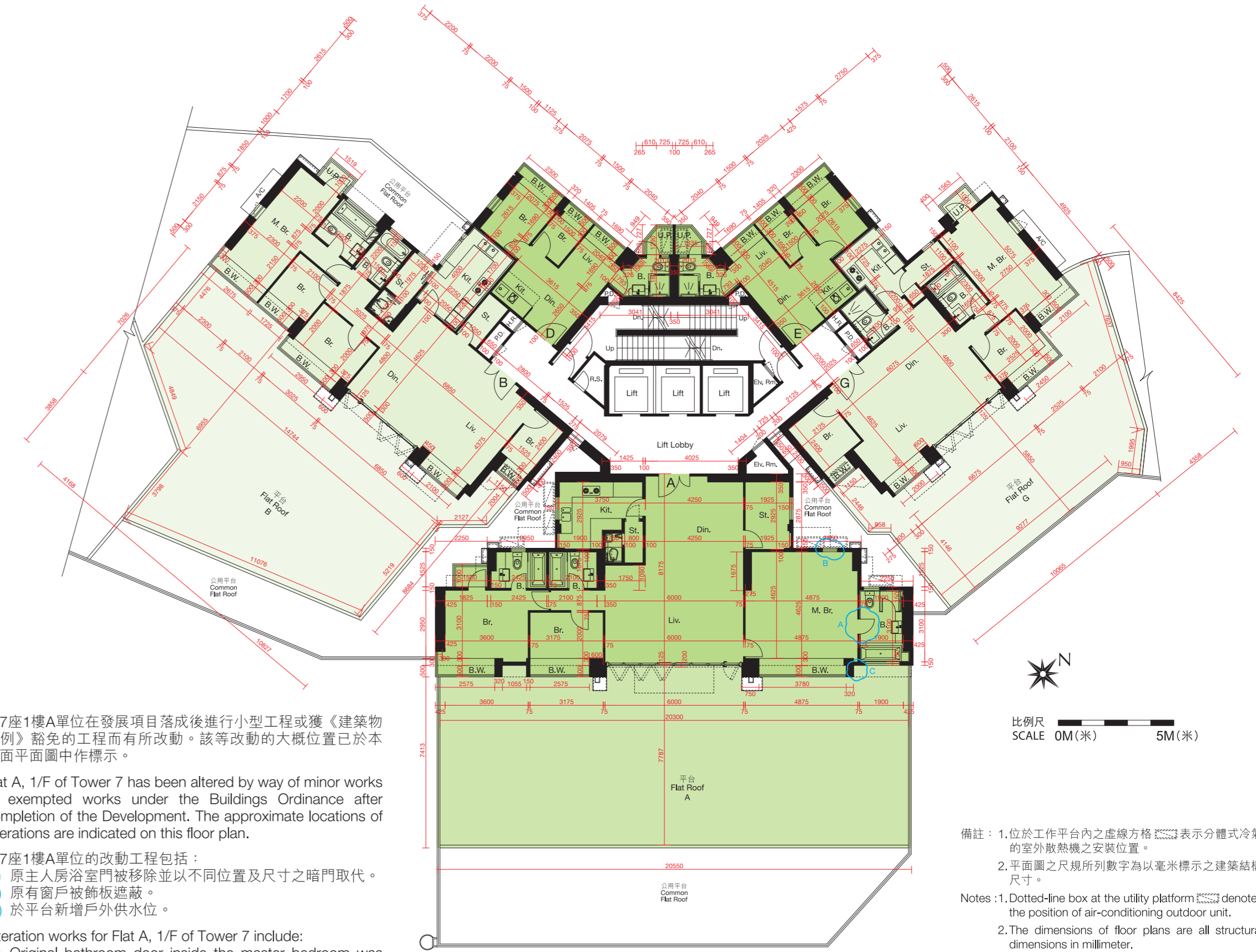


備註：1. 位於天台內之虛線方格 表示分體式冷氣的室外散熱機之安裝位置。
2. 平面圖之尺規所列數字為以毫米標示之建築結構尺寸。
Note: 1. Dotted-line box at the roof denotes the position of air-conditioning outdoor unit.
2. The dimensions of floor plans are all structural dimensions in millimeter.

每個住宅物業 Each Residential Property	樓層 Floor	單位 Unit		
		A	B	C
樓板(不包括灰泥)的厚度(毫米) Thickness of Floor Slabs(excluding plaster)(mm)	天台 Roof	不適用 Not Applicable		
層與層之間的高度(毫米) Floor-to-Floor Height(mm)		不適用 Not Applicable		

因住宅物業的較高樓層的結構牆的厚度遞減，較高樓層的內部面積，一般比較低樓層的內部面積稍大。
The internal areas of the residential properties on the upper floors will generally be slightly larger than those on the lower floors because of the reducing thickness of the structural walls on the upper floors.

一樓平面圖 1ST FLOOR PLAN



第7座1樓A單位在發展項目落成後進行小型工程或獲《建築物條例》豁免的工程而有所改動。該等改動的大概位置已於本樓面平面圖中作標示。

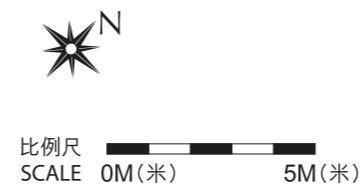
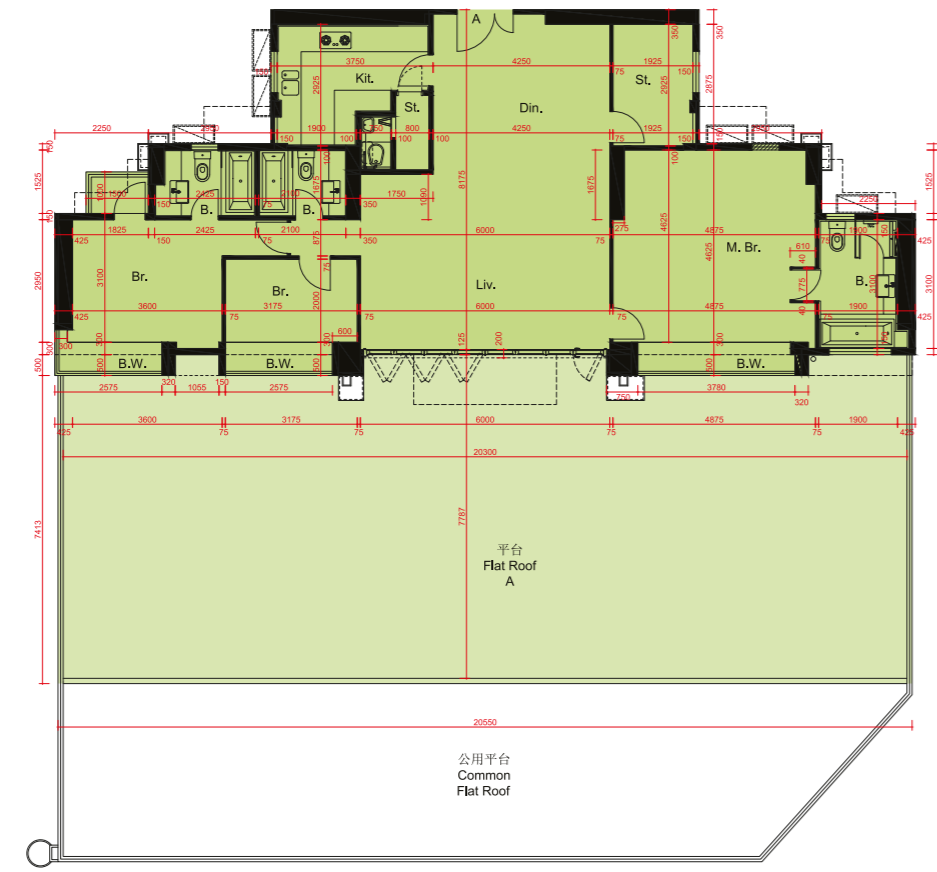
Flat A, 1/F of Tower 7 has been altered by way of minor works or exempted works under the Buildings Ordinance after completion of the Development. The approximate locations of alterations are indicated on this floor plan.

第7座1樓A單位的改動工程包括：
(A) 原主人房浴室門被移除並以不同位置及尺寸之暗門取代。
(B) 原有窗戶被飾板遮蔽。
(C) 於平台新增戶外供水位。

Alteration works for Flat A, 1/F of Tower 7 include:
(A) Original bathroom door inside the master bedroom was removed and replaced by concealed door with different dimensions and in a different location.
(B) Original window was covered by wall panel.
(C) Outdoor water supply point was added at the flat roof.

備註：1. 位於工作平台內之虛線方格 表示分體式冷氣的室外散熱機之安裝位置。
2. 平面圖之尺規所列數字為以毫米標示之建築結構尺寸。
Notes: 1. Dotted-line box at the utility platform denotes the position of air-conditioning outdoor unit.
2. The dimensions of floor plans are all structural dimensions in millimeter.

第7座1樓A單位之現狀間隔平面圖 As-is Floor Plan for Unit A, 1/F of Tower 7



每個住宅物業 Each Residential Property	樓層 Floor	單位 Unit				
		A	B	D	E	G
樓板(不包括灰泥)的厚度(毫米) Thickness of Floor Slabs (excluding plaster)(mm)	1/F	125,150,225, 250	125,150,175, 250	125,150,175	125,150,175	150,175,250
層與層之間的高度(毫米) Floor-to-Floor Height (mm)		3500	3150, 3500	3500	3500	3150, 3500

因住宅物業的較高樓層的結構牆的厚度遞減，較高樓層的內部面積，一般比較低樓層的內部面積稍大。
The internal areas of the residential properties on the upper floors will generally be slightly larger than those on the lower floors because of the reducing thickness of the structural walls on the upper floors.

二樓至十六樓平面圖 2ND - 16TH FLOOR PLAN



二樓部分平面圖
Part Plan of 2/F

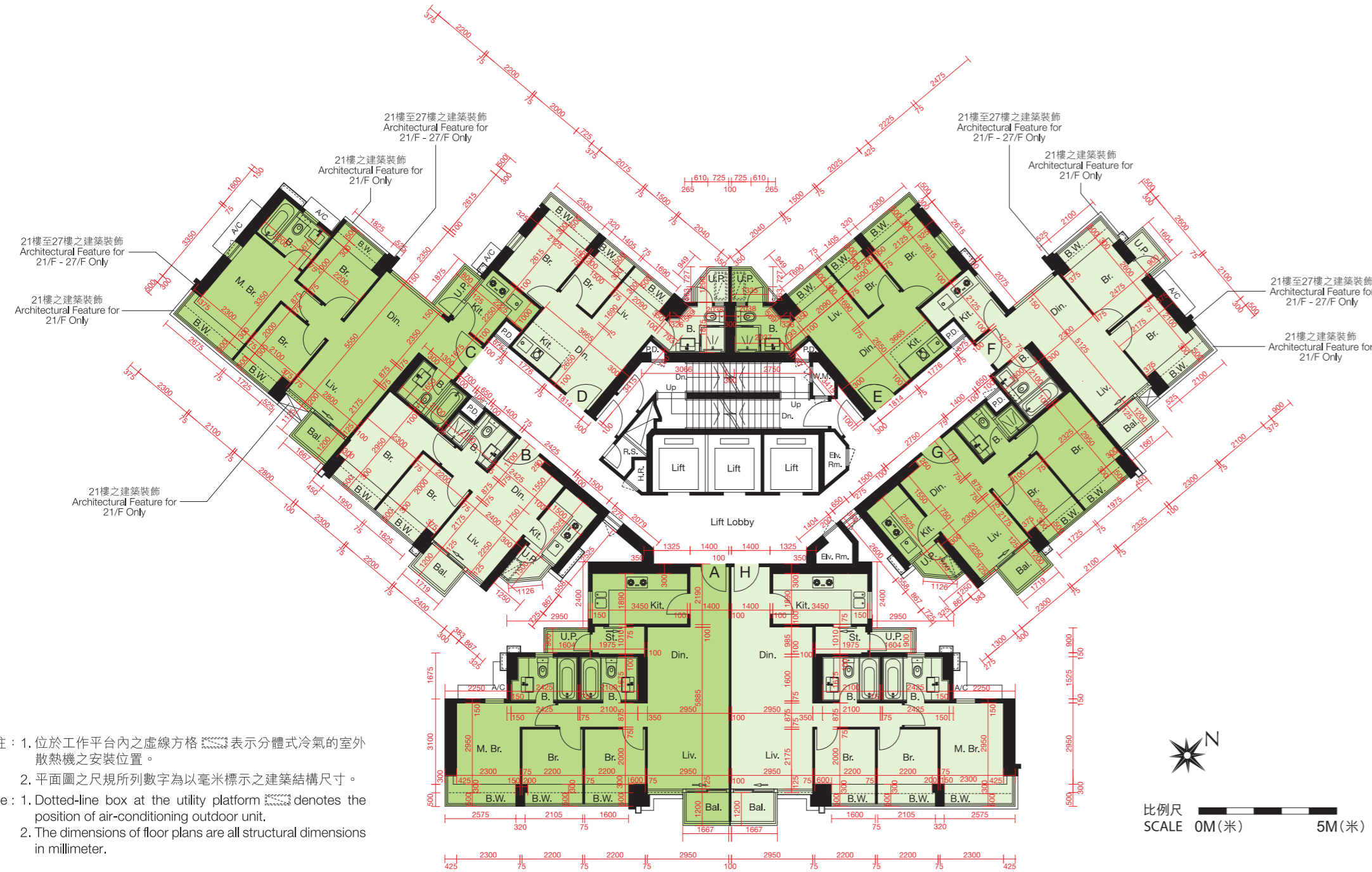
三樓部分平面圖
Part Plan of 3/F

備註：1. 位於工作平台內之虛線方格 表示分體式冷氣的室外散熱機之安裝位置。
2. 平面圖之尺規所列數字為以毫米標示之建築結構尺寸。
Note: 1. Dotted-line box at the utility platform denotes the position of air-conditioning outdoor unit.
2. The dimensions of floor plans are all structural dimensions in millimeter.

每個住宅物業 Each Residential Property	樓層 Floor	單位 Unit							
		A	B	C	D	E	F	G	H
樓板(不包括灰泥)的厚度(毫米) Thickness of Floor Slabs(excluding plaster)(mm)	2/F-16/F	125,150,225, 250	125,150,250	150,250	125,150,175	125,150,175	150,250	125,150,250	125,150,225, 250
層與層之間的高度(毫米) Floor-to-Floor Height(mm)		3150	3150	3150	3150	3150	3150	3150	3150

因住宅物業的較高樓層的結構牆的厚度遞減，較高樓層的內部面積，一般比較低樓層的內部面積稍大。
The internal areas of the residential properties on the upper floors will generally be slightly larger than those on the lower floors because of the reducing thickness of the structural walls on the upper floors.

十七樓至二十七樓平面圖 17TH - 27TH FLOOR PLAN

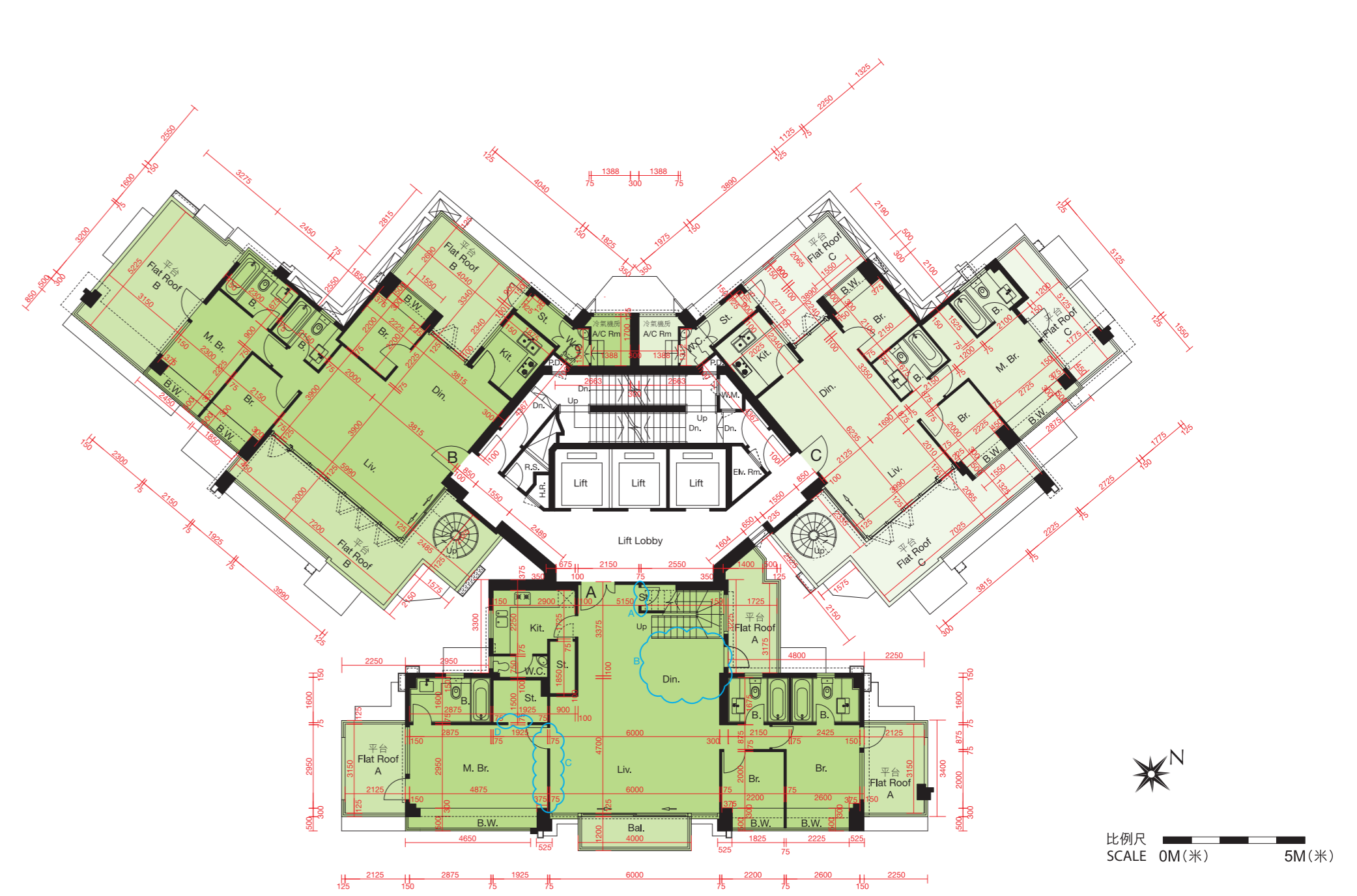


備註：1. 位於工作平台內之虛線方格 表示分體式冷氣的室外散熱機之安裝位置。
2. 平面圖之尺規所列數字為以毫米標示之建築結構尺寸。
Note: 1. Dotted-line box at the utility platform denotes the position of air-conditioning outdoor unit.
2. The dimensions of floor plans are all structural dimensions in millimeter.

每個住宅物業 Each Residential Property	樓層 Floor	單位 Unit							
		A	B	C	D	E	F	G	H
樓板(不包括灰泥)的厚度(毫米) Thickness of Floor Slabs(excluding plaster)(mm)	17-26/F	125,150,225,250	125,150,250	150,250	125,150,175	125,150,175	150,250	125,150,250	125,150,225,250
層與層之間的高度(毫米) Floor-to-Floor Height(mm)	17-26/F	3150	3150	3150	3150	3150	3150	3150	3150
樓板(不包括灰泥)的厚度(毫米) Thickness of Floor Slabs(excluding plaster)(mm)	27/F	150,225,250	150,200,250	150,250,450	125,150,175	125,150,175	150,250	150,200,250	150,225,250
層與層之間的高度(毫米) Floor-to-Floor Height(mm)	27/F	3200,3500	3200,3500	3150,3200,3500	3200,3500	3200,3500	3150,3200,3500	3200,3500	3200,3500

因住宅物業的較高樓層的結構牆的厚度遞減，較高樓層的內部面積，一般比較低樓層的內部面積稍大。
The internal areas of the residential properties on the upper floors will generally be slightly larger than those on the lower floors because of the reducing thickness of the structural walls on the upper floors.

二十八樓平面圖 28TH FLOOR PLAN



第7座28樓A單位在發展項目落成後進行小型工程或獲《建築物條例》豁免的工程而有所改動。該等改動的大概位置已於本樓面平面圖中作標示。

Flat A, 28/F of Tower 7 has been altered by way of minor works or exempted works under the Buildings Ordinance after completion of the Development. The approximate locations of alterations are indicated on this floor plan.

第7座28樓A單位的改動工程包括：

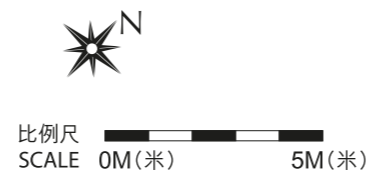
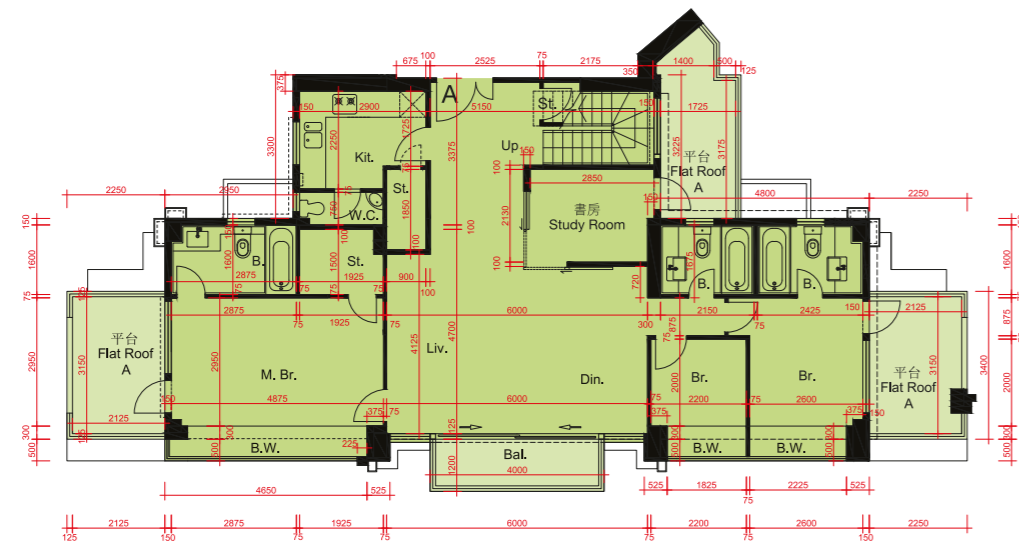
- (A) 原有之儲物室門往樓梯方向後移。
- (B) 原有樓梯之玻璃欄杆被移除並新增書房。
- (C) 原有之主人房門被移除，並於不同位置重置。
- (D) 原有之儲物室門被移除，並於不同位置重置。

Alteration works for Flat A, 28/F of Tower 7 include:

- (A) Original door of the store room was relocated towards the staircase.
- (B) Original glass balustrade of the staircase was removed and new study room was added.
- (C) Original door of the master bedroom was removed and relocated to a new position.
- (D) Original door of the store room was removed and relocated to a new position.

備註：平面圖之尺規所列數字為以毫米標示之建築結構尺寸。
Note: The dimensions of floor plans are all structural dimensions in millimeter.

第7座28樓A單位之現狀間隔平面圖 As-is Floor Plan for Unit A, 28/F of Tower 7

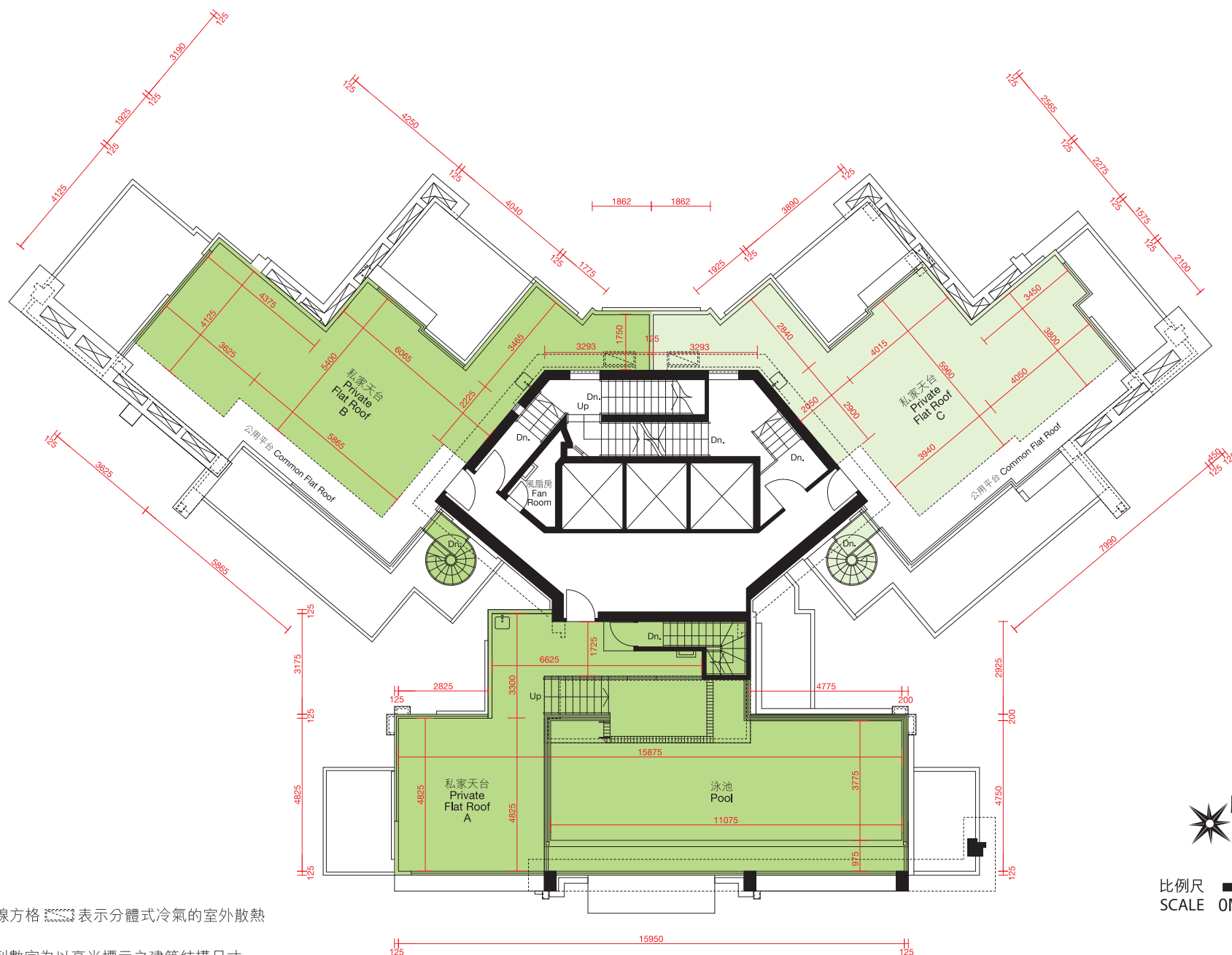


此版乃特意留白
This page is deliberately left in blank

每個住宅物業 Each Residential Property	樓層 Floor	單位 Unit		
		A	B	C
樓板(不包括灰泥)的厚度(毫米) Thickness of Floor Slabs (excluding plaster)(mm)	28/F	175,225	125,175,225	125,175
層與層之間的高度(毫米) Floor-to-Floor Height (mm)		3500	3500	3500

因住宅物業的較高樓層的結構牆的厚度遞減，較高樓層的內部面積，一般比較低樓層的內部面積稍大。
The internal areas of the residential properties on the upper floors will generally be slightly larger than those on the lower floors because of the reducing thickness of the structural walls on the upper floors.

天台平面圖 ROOF PLAN



- 備註：1. 位於天台內之虛線方格 表示分體式冷氣的室外散熱機之安裝位置。
 2. 平面圖之尺規所列數字為以毫米標示之建築結構尺寸。
 Note: 1. Dotted-line box at the roof denotes the position of air-conditioning outdoor unit.
 2. The dimensions of floor plans are all structural dimensions in millimeter.

每個住宅物業 Each Residential Property	樓層 Floor	單位 Unit		
		A	B	C
樓板(不包括灰泥)的厚度(毫米) Thickness of Floor Slabs(excluding plaster)(mm)	天台 Roof	不適用 Not Applicable		
層與層之間的高度(毫米) Floor-to-Floor Height(mm)				

因住宅物業的較高樓層的結構牆的厚度遞減，較高樓層的內部面積，一般比較低樓層的內部面積稍大。
 The internal areas of the residential properties on the upper floors will generally be slightly larger than those on the lower floors because of the reducing thickness of the structural walls on the upper floors.