

7. 發展項目的鳥瞰照片

AERIAL PHOTOGRAPH OF THE DEVELOPMENT



摘錄自地政總署測繪處於2017年4月29日在元朗6,900呎飛行高度拍攝之鳥瞰照片，編號為E023538C。

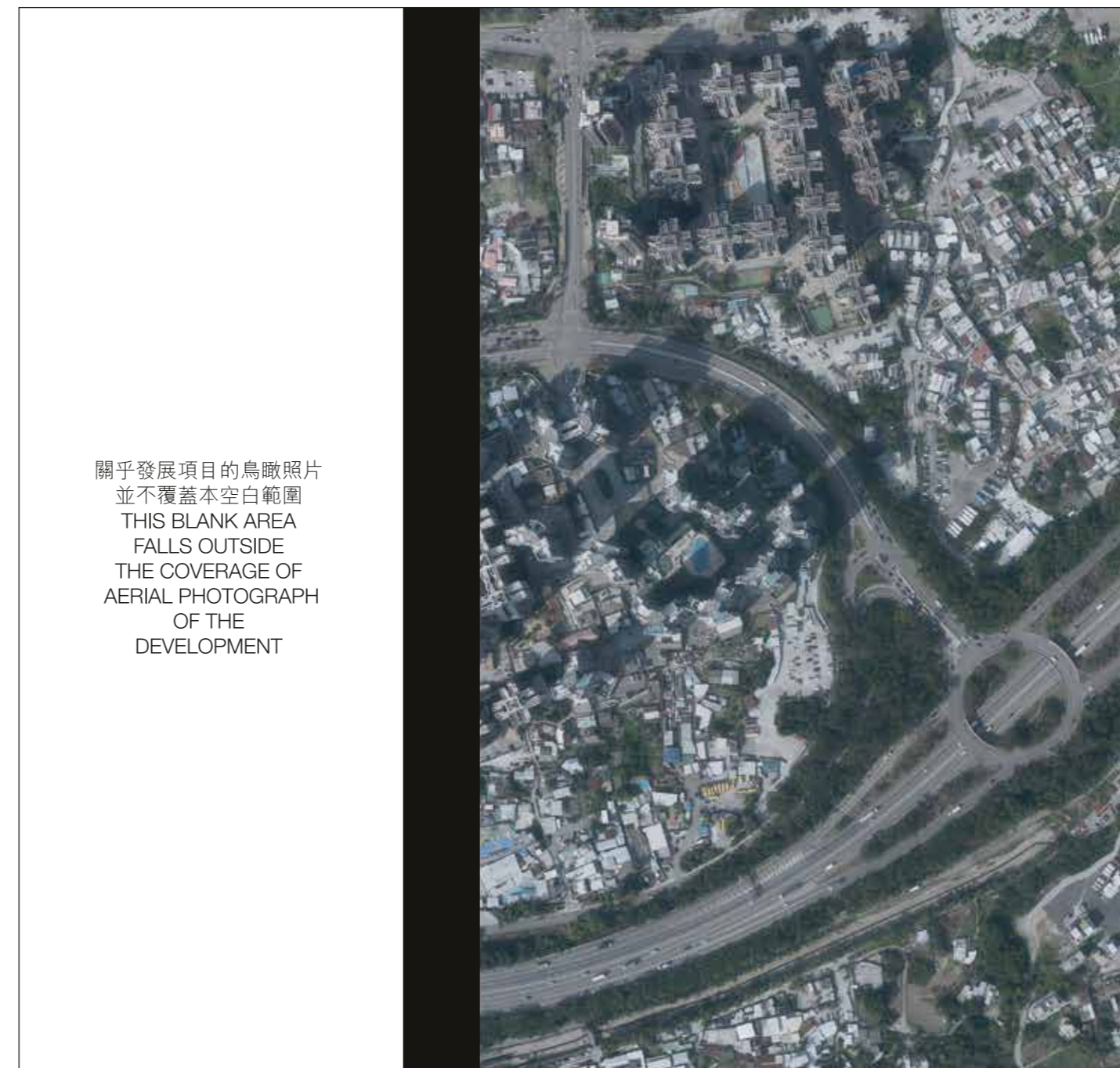
Adopted from part of the aerial photograph taken by the Survey and Mapping Office of Lands Department at a flying height 6,900 feet in Yuen Long. Photo No. E023538C, dated 29th April 2017.

備註：因技術性問題，此鳥瞰照片所顯示的範圍超過《一手住宅物業銷售條例》的規定。

Note: Due to technical reasons, this aerial photograph has shown more than the area required under the Residential Properties (First-hand Sales) Ordinance.

香港特別行政區政府地政總署測繪處，版權所有，未經許可，不得複製。

Survey and Mapping Office, Lands Department, The Government of HKSAR. © Copyright reserved - reproduction by permission only.



關於發展項目的鳥瞰照片
並不覆蓋本空白範圍
THIS BLANK AREA
FALLS OUTSIDE
THE COVERAGE OF
AERIAL PHOTOGRAPH
OF THE
DEVELOPMENT

摘錄自地政總署測繪處於2020年2月18日在元朗6,900呎飛行高度拍攝之鳥瞰照片，編號為E089553C。

Adopted from part of the aerial photograph taken by the Survey and Mapping Office of Lands Department at a flying height 6,900 feet in Yuen Long. Photo No. E089553C, dated 18th February 2020.

備註：因技術性問題，此鳥瞰照片所顯示的範圍超過《一手住宅物業銷售條例》的規定。

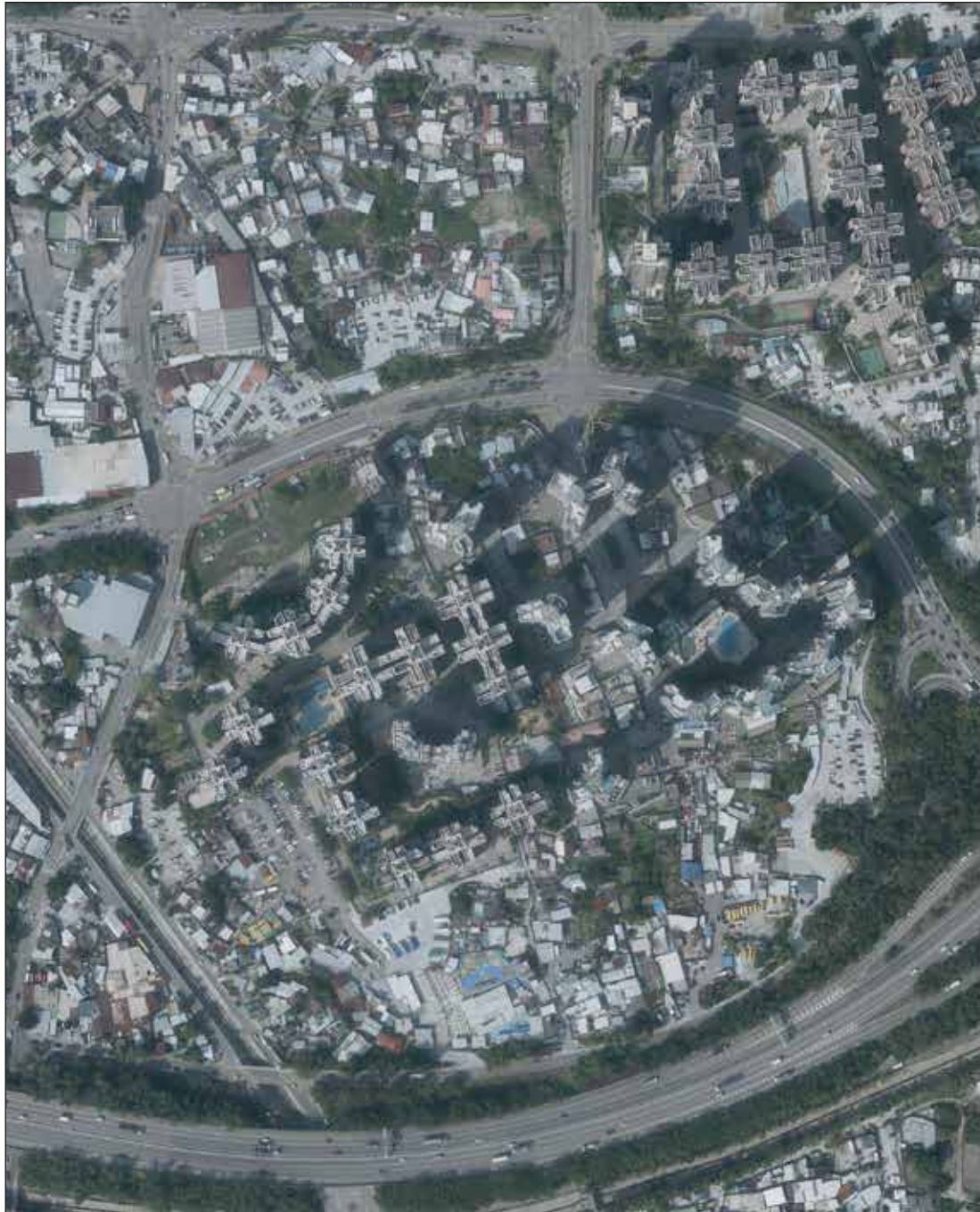
Note: Due to technical reasons, this aerial photograph has shown more than the area required under the Residential Properties (First-hand Sales) Ordinance.

香港特別行政區政府地政總署測繪處，版權所有，未經許可，不得複製。

Survey and Mapping Office, Lands Department, The Government of HKSAR. © Copyright reserved - reproduction by permission only.

7. 發展項目的鳥瞰照片

AERIAL PHOTOGRAPH OF THE DEVELOPMENT



關於發展項目的
鳥瞰照片
並不覆蓋本空白
範圍
THIS BLANK
AREA FALLS
OUTSIDE
THE COVERAGE
OF AERIAL
PHOTOGRAPH
OF THE
DEVELOPMENT

摘錄自地政總署測繪處於2020年2月18日在元朗6,900呎飛行高度拍攝之鳥瞰照片，編號為E089555C。

Adopted from part of the aerial photograph taken by the Survey and Mapping Office of Lands Department at a flying height 6,900 feet in Yuen Long, Photo No. E089555C, dated 18th February 2020.

備註：因技術性問題，此鳥瞰照片所顯示的範圍超過《一手住宅物業銷售條例》的規定。

Note: Due to technical reasons, this aerial photograph has shown more than the area required under the Residential Properties (First-hand Sales) Ordinance.

香港特別行政區政府地政總署測繪處，版權所有，未經許可，不得複製。

Survey and Mapping Office, Lands Department, The Government of HKSAR. © Copyright reserved - reproduction by permission only.