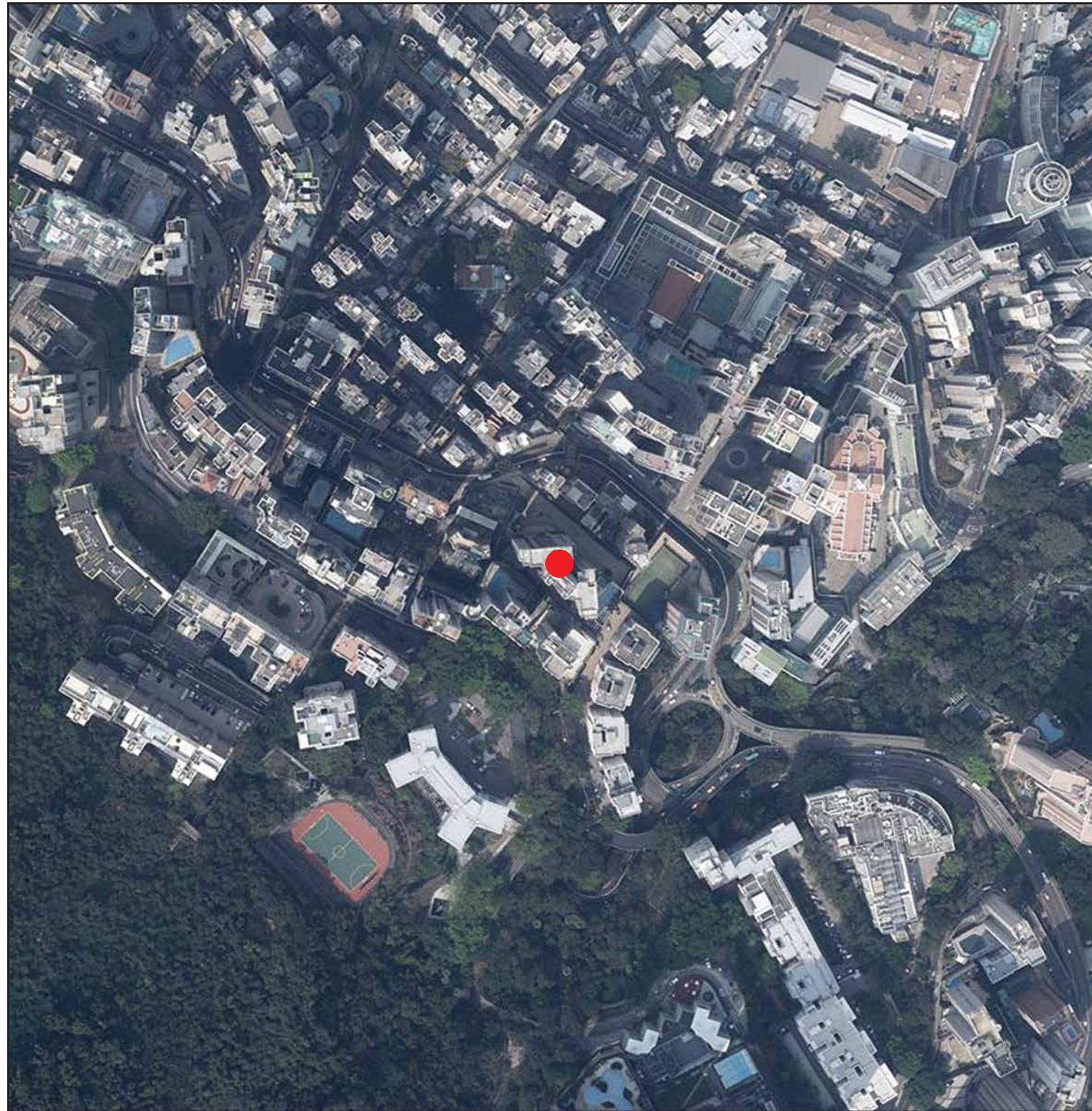


7. 發展項目的鳥瞰照片 AERIAL PHOTOGRAPH OF THE DEVELOPMENT



摘錄自地政總署測繪處於2024年3月8日在中環6,000呎飛行高度拍攝之鳥瞰照片，編號為E219015C。

Adopted from part of the aerial photograph taken by the Survey and Mapping Office of Lands Department at a flying height 6,000 feet in Central. Photo No. E219015C, dated 8th March 2024.

備註：因技術性問題，此鳥瞰照片所顯示的範圍超過《一手住宅物業銷售條例》的規定。

Note: Due to technical reasons, this aerial photograph has shown more than the area required under the Residential Properties (First-hand Sales) Ordinance.

● 發展項目的位置 Location of the Development

香港特別行政區政府地政總署測繪處 © 版權所有，未經許可，不得複製。

Survey and Mapping Office, Lands Department, The Government of HKSAR © Copyright reserved – reproduction by permission only.

7. 發展項目的鳥瞰照片 AERIAL PHOTOGRAPH OF THE DEVELOPMENT



● 關於發展項目的鳥瞰照片並不覆蓋本空白範圍
This blank area falls outside the coverage of aerial photograph of the development

摘錄自地政總署測繪處於2024年3月20日在上環2,000呎飛行高度拍攝之鳥瞰照片，編號為E221877C。

Adopted from part of the aerial photograph taken by the Survey and Mapping Office of Lands Department at a flying height 2,000 feet in Sheung Wan. Photo No. E221877C, dated 20th March 2024.

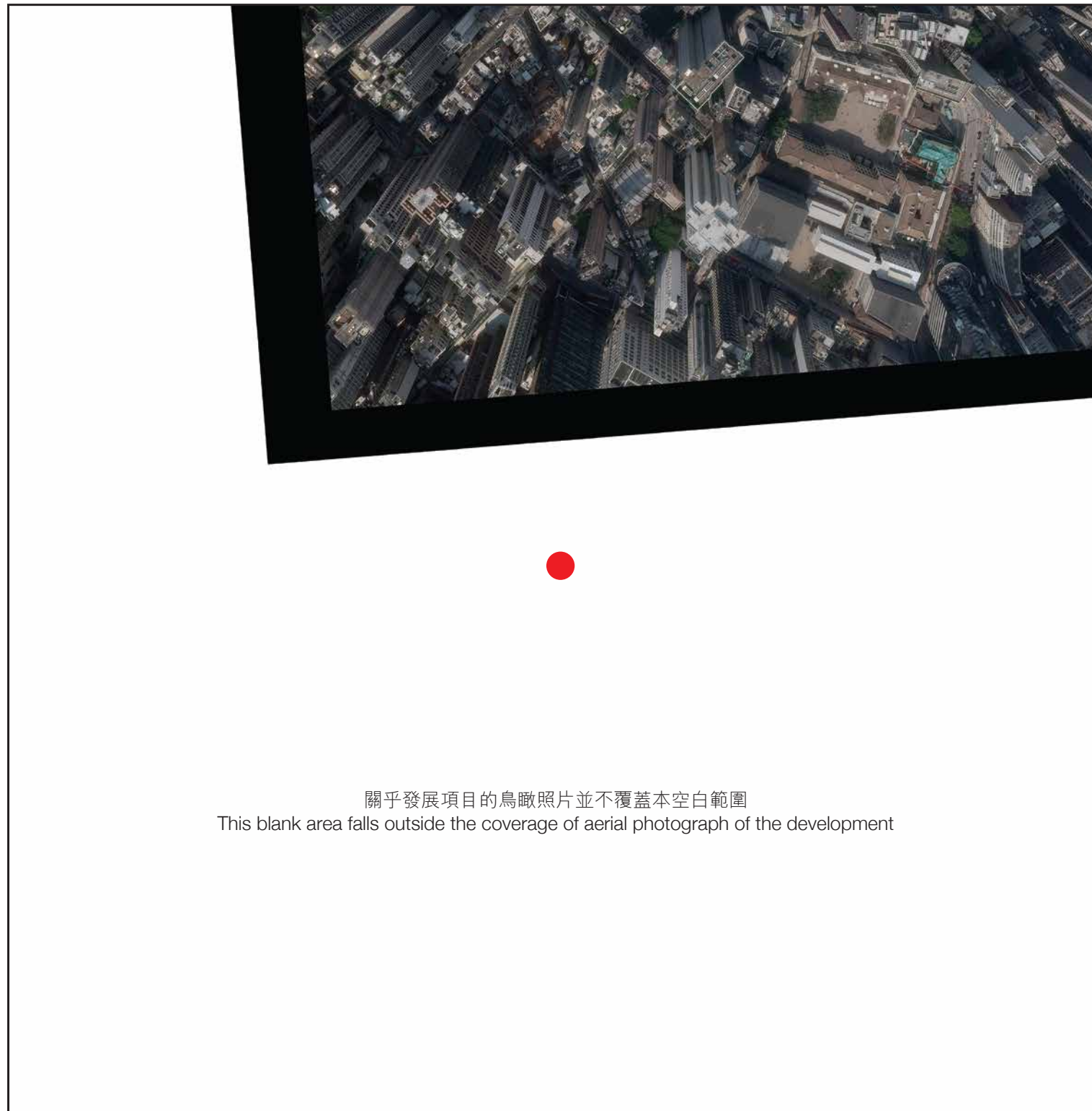
備註：因技術性問題，此鳥瞰照片所顯示的範圍超過《一手住宅物業銷售條例》的規定。

Note: Due to technical reasons, this aerial photograph has shown more than the area required under the Residential Properties (First-hand Sales) Ordinance.

● 發展項目的位置 Location of the Development

香港特別行政區政府地政總署測繪處 © 版權所有，未經許可，不得複製。
Survey and Mapping Office, Lands Department, The Government of HKSAR © Copyright reserved
– reproduction by permission only.

7. 發展項目的鳥瞰照片 AERIAL PHOTOGRAPH OF THE DEVELOPMENT



摘錄自地政總署測繪處於2024年3月20日在上環2,000呎飛行高度拍攝之鳥瞰照片，編號為E221879C。

Adopted from part of the aerial photograph taken by the Survey and Mapping Office of Lands Department at a flying height 2,000 feet in Sheung Wan. Photo No. E221879C, dated 20th March 2024.

備註：因技術性問題，此鳥瞰照片所顯示的範圍超過《一手住宅物業銷售條例》的規定。

Note: Due to technical reasons, this aerial photograph has shown more than the area required under the Residential Properties (First-hand Sales) Ordinance.

● 發展項目的位置 Location of the Development

香港特別行政區政府地政總署測繪處 © 版權所有，未經許可，不得複製。
Survey and Mapping Office, Lands Department, The Government of HKSAR © Copyright reserved
– reproduction by permission only.