

10.發展項目的住宅物業的樓面平面圖

FLOOR PLANS OF RESIDENTIAL PROPERTIES IN THE DEVELOPMENT

在本頁上之備註和圖例適用於全部的「發展項目的住宅物業的樓面平面圖」的頁數。
The notes and legends on this page apply to all pages of "Floor plans of residential properties in the Development".

樓面平面圖之圖例 Legends of Floor Plans

| | |
|---|--|
| A/C platform | = 冷氣機平台 Air-conditioning platform |
| A.D. | = 風槽 Air duct |
| B. | = 浴室 Bathroom |
| Bal. | = 露台 Balcony |
| Br. | = 睡房 Bedroom |
| B.W. | = 窗台 Bay window |
| Cor. | = 走廊 Corridor |
| Dn. | = 落 Down |
| Din. | = 飯廳 Dining room |
| ELEC. & ELV Room | = 電力及超低壓電力房 Electricity & extra-low voltage electricity room |
| H.R. | = 喉轆 Hose reel |
| Kit. | = 廚房 Kitchen |
| Liv. | = 客廳 Living room |
| M.B. | = 主人房浴室 Master bathroom |
| M Br. | = 主人房 Master bedroom |
| P. D. | = 管道槽位 Pipe duct |
| Powder Rm. | = 化妝間 Powder room |
| RS & MR Room | = 垃圾及物料回收室 Refuse storage and material recovery room |
| St. | = 儲物間 Store room |
| Up | = 上 Up |
| U.P. | = 工作平台 Utility platform |
| W.C. | = 廁所 Washing chamber |
|  | = 隨樓附送之嵌入式裝置 Built-in fittings provided in the flats |

備註：

- 部分住宅物業的露台、工作平台、空調機平台、平台、天台或外牆上/附近或設有外露之公用喉管，或外牆裝飾皮內藏之公用喉管。
- 部分住宅物業內之部分天花或有跌級樓板，用以安裝上層之機電設備或配合上層之結構、建築設計及/或裝修設計上的需要。
- 部分住宅物業內或設有假陣或假天花用以安裝空調喉管及/或其他機電設備。
- 各住宅物業的樓面平面圖內所展示之裝置及設備的圖標如洗面盆、座廁、淋浴間、洗滌盆、櫃(如有)等乃根據最新經批准的建築圖則擬備，其形狀、尺寸、比例或與實際提供的裝置及設備存在差異，僅供示意及參考之用。

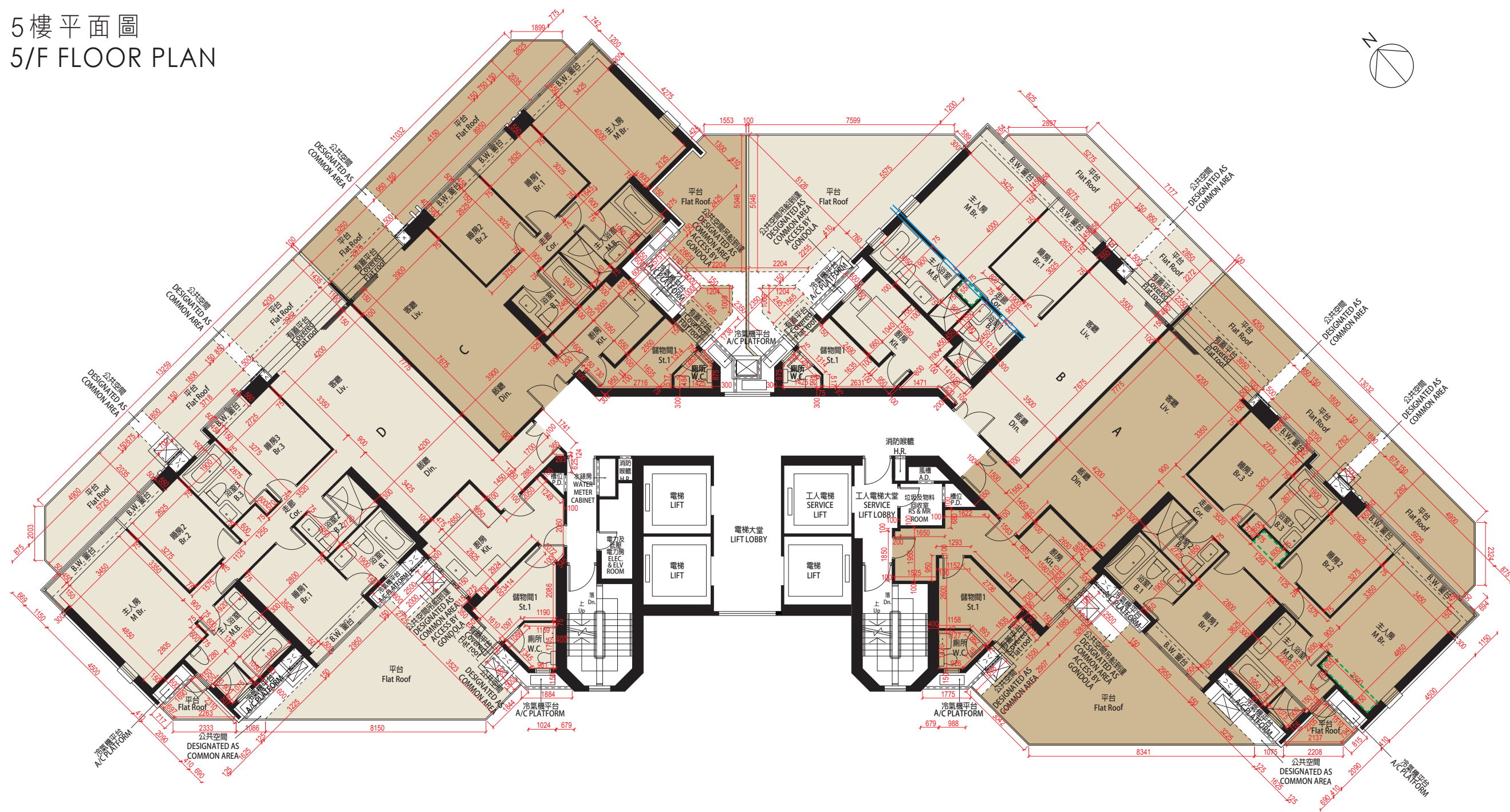
Notes:

- Common pipes that are exposed or enclosed in cladding may be located at or adjacent to the balcony, utility platform, air conditioning platform, flat roof, roof, or external wall of some residential properties.
- There may be sunken slabs in some parts of the ceiling within some residential properties for the installation of mechanical and electrical services of the floor above, or due to the structural, architectural and/or decorative design requirements of the floor above.
- There may be ceiling bulkheads or false ceilings inside some residential properties for the installation of air-conditioning conduits and/or other mechanical and electrical services.
- The icons of fittings and appliances shown on the floor plans of residential properties, such as wash basins, water closets, shower cubicles, sink units, cabinets (if any) etc. are prepared in accordance with the latest approved building plans. Their shapes, dimensions, scales may differ from the fittings and appliances actually provided, and they are for indication and reference only.

10.發展項目的住宅物業的樓面平面圖

FLOOR PLANS OF RESIDENTIAL PROPERTIES IN THE DEVELOPMENT

5樓平面圖
5/F FLOOR PLAN



| 每個住宅物業 Each Residential Property | 樓層 Floor | 單位 Flat | | | |
|---|-----------|------------|------------|------------|------------|
| | | A | B | C | D |
| 樓板(不包括灰泥)的厚度(毫米) Thickness of Floor Slab (excluding plaster) (mm) | 5樓 5/F | 150 | 150 | 150 | 150 |
| 層與層之間的高度(毫米) Floor-to-Floor Height (mm) | | 3150, 3500 | 3150, 3500 | 3150, 3500 | 3150, 3500 |

比例尺 SCALE : 0M(米) 5M(米)

因住宅物業的較高樓層的結構牆的厚度遞減，較高樓層的內部面積，一般比較低樓層的內部面積稍大。
The internal areas of the residential properties on the upper floors will generally be slightly larger than those on the lower floors because of the reducing thickness of the structural walls on the upper floors.

平台空白位置為供維修大廈設備使用的公用地方。
Blank areas on the flat roof are common areas for building facility maintenance.

備註：平面圖所列數字為以毫米標示之建築結構尺寸。
Note：The dimensions of floor plans are all structural dimensions in millimeter.

6樓至12樓及15樓至16樓平面圖
6/F - 12/F and 15/F - 16/F FLOOR PLAN



| 每個住宅物業 Each Residential Property | 樓層 Floor | 單位 Flat | | | |
|---|--|------------|------------|------------|------------|
| | | A | B | C | D |
| 樓板(不包括灰泥)的厚度(毫米) Thickness of Floor Slab (excluding plaster) (mm) | 6樓至12樓及 15樓至16樓 6/F - 12/F, 15/F - 16/F | 150 | 150 | 150 | 150 |
| 層與層之間的高度(毫米) Floor-to-Floor Height (mm) | | 3150, 3500 | 3150, 3500 | 3150, 3500 | 3150, 3500 |

比例尺 SCALE : 0M(米) 5M(米)

因住宅物業的較高樓層的結構牆的厚度遞減，較高樓層的內部面積，一般比較低樓層的內部面積稍大。
The internal areas of the residential properties on the upper floors will generally be slightly larger than those on the lower floors because of the reducing thickness of the structural walls on the upper floors.

備註：平面圖所列數字為以毫米標示之建築結構尺寸。
Note：The dimensions of floor plans are all structural dimensions in millimeter.

10.發展項目的住宅物業的樓面平面圖
FLOOR PLANS OF RESIDENTIAL PROPERTIES IN THE DEVELOPMENT

17樓至20樓平面圖
17/F - 20/F FLOOR PLAN



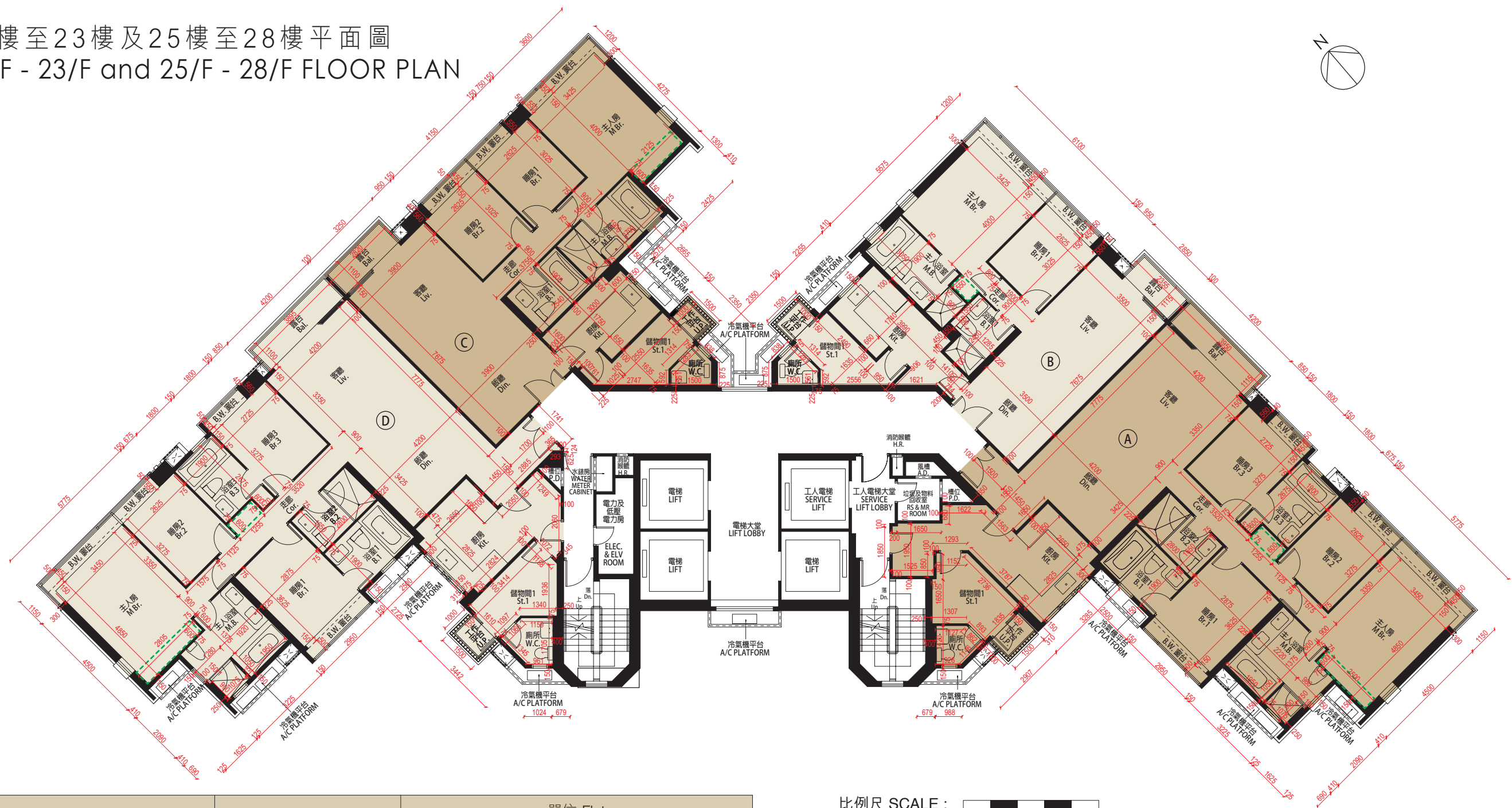
| 每個住宅物業 Each Residential Property | 樓層 Floor | 單位 Flat | | | |
|---|------------------------|------------|------------|------------|------------|
| | | A | B | C | D |
| 樓板(不包括灰泥)的厚度(毫米) Thickness of Floor Slab (excluding plaster) (mm) | 17樓至20樓 17/F - 20/F | 150 | 150 | 150 | 150 |
| 層與層之間的高度(毫米) Floor-to-Floor Height (mm) | | 3150, 3500 | 3150, 3500 | 3150, 3500 | 3150, 3500 |

比例尺 SCALE : 0M(米) 5M(米)

因住宅物業的較高樓層的結構牆的厚度遞減，較高樓層的內部面積，一般比較低樓層的內部面積稍大。
The internal areas of the residential properties on the upper floors will generally be slightly larger than those on the lower floors because of the reducing thickness of the structural walls on the upper floors.

備註：平面圖所列數字為以毫米標示之建築結構尺寸。
Note：The dimensions of floor plans are all structural dimensions in millimeter.

21樓至23樓及25樓至28樓平面圖
21/F - 23/F and 25/F - 28/F FLOOR PLAN



| 每個住宅物業 Each Residential Property | 樓層 Floor | 單位 Flat | | | |
|---|---|------------|------------------|------------------|------------|
| | | A | B | C | D |
| 樓板(不包括灰泥)的厚度(毫米) Thickness of Floor Slab (excluding plaster) (mm) | 21樓至23樓及25樓至27樓 21/F - 23/F, 25/F - 27/F | 150 | 150 | 150 | 150 |
| | 28樓 28/F | 150, 175 | 150, 175 | 150, 175 | 150, 175 |
| 層與層之間的高度(毫米) Floor-to-Floor Height (mm) | 21樓至23樓及25樓至27樓 21/F - 23/F, 25/F - 27/F | 3150, 3500 | 3150, 3500 | 3150, 3500 | 3150, 3500 |
| | 28樓 28/F | 3150, 3500 | 3150, 3300, 3500 | 3150, 3300, 3500 | 3150, 3500 |

比例尺 SCALE : 0M(米) 5M(米)

因住宅物業的較高樓層的結構牆的厚度遞減，較高樓層的內部面積，一般比較低樓層的內部面積稍大。
The internal areas of the residential properties on the upper floors will generally be slightly larger than those on the lower floors because of the reducing thickness of the structural walls on the upper floors.

備註：平面圖所列數字為以毫米標示之建築結構尺寸。
Note：The dimensions of floor plans are all structural dimensions in millimeter.

10.發展項目的住宅物業的樓面平面圖

FLOOR PLANS OF RESIDENTIAL PROPERTIES IN THE DEVELOPMENT

29樓平面圖 29/F FLOOR PLAN

- 29樓B單位的改動工程包括：
- ① 改動間隔牆及門的位置或方向。
 - ② 改動原本的布局。
 - ③ 拆除睡房3及浴室3，並新增雙摺門及趟門。
 - ④ 改動間隔牆。
 - ⑤ 新增間隔牆和門並整合成衣帽間。
 - ⑥ 拆除洗滌盤。

Alteration works for Flat B, 29/F include:

- ① Location or direction of partition wall and door were altered.
- ② Original layout was altered.
- ③ Bedroom 3 and Bathroom 3 were removed and bi-folding door and sliding door were added.
- ④ Partition wall was altered.
- ⑤ Partition wall and door were added and altered as Walk-in Closet.
- ⑥ Sink was removed.

29樓A及B單位在發展項目落成後進行小型工程及/或獲《建築物條例》(第123章) 豁免的工程而有所改動。該等改動的大概位置已在本樓面平面圖中作標示。
Flats A and B, 29/F have been altered by way of minor works and/or exempted works under the Building Ordinance (Cap. 123) after completion of the Development. The approximate locations of alterations are indicated on this floor plan.

29樓A單位的改動工程包括：

- ① 新增間隔牆和門並整合成儲物間2。
- ② 拆除間隔牆及門。
- ③ 改動間隔牆及門的位置或方向。
- ④ 改動原本的布局。
- ⑤ 新增間隔牆及門。
- ⑥ 新增間隔牆和門並整合成衣帽間。
- ⑦ 改動間隔牆。
- ⑧ 新增間隔牆。

Alteration works for Flat A, 29/F include:

- ① Partition wall and door were added and altered as Store Room 2.
- ② Partition wall and door were removed.
- ③ Location or direction of partition wall and door were altered.
- ④ Original layout was altered.
- ⑤ Partition wall and door were added.
- ⑥ Partition wall and door were added and altered as Walk-in Closet
- ⑦ Partition wall altered.
- ⑧ Partition wall was added.



比例尺 SCALE : 0M(米) 5M(米)

| 每個住宅物業 Each Residential Property | 樓層 Floor | 單位 Flat | |
|---|-------------|------------|------------|
| | | A | B |
| 樓板(不包括灰泥)的厚度(毫米) Thickness of Floor Slab (excluding plaster) (mm) | 29樓 29/F | 150, 175 | 150, 175 |
| 層與層之間的高度(毫米) Floor-to-Floor Height (mm) | | 3150, 3500 | 3150, 3500 |

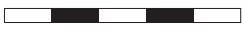
因住宅物業的較高樓層的結構牆的厚度遞減，較高樓層的內部面積，一般比較低樓層的內部面積稍大。
The internal areas of the residential properties on the upper floors will generally be slightly larger than those on the lower floors because of the reducing thickness of the structural walls on the upper floors.

備註：平面圖所列數字為以毫米標示之建築結構尺寸。
Note : The dimensions of floor plans are all structural dimensions in millimeter.

29樓A及B單位之現狀間隔平面圖
AS-IS FLOOR PLAN OF
FLATS A AND B, 29/F



| 每個住宅物業 Each Residential Property | 樓層 Floor | 單位 Flat | |
|---|-------------|------------|------------|
| | | A | B |
| 樓板(不包括灰泥)的厚度(毫米) Thickness of Floor Slab (excluding plaster) (mm) | 29樓 29/F | 150, 175 | 150, 175 |
| 層與層之間的高度(毫米) Floor-to-Floor Height (mm) | | 3150, 3500 | 3150, 3500 |

比例尺 SCALE :  0M(米) 5M(米)

因住宅物業的較高樓層的結構牆的厚度遞減，較高樓層的內部面積，一般比較低樓層的內部面積稍大。
The internal areas of the residential properties on the upper floors will generally be slightly larger than those on the lower floors because of the reducing thickness of the structural walls on the upper floors.

備註：平面圖所列數字為以毫米標示之建築結構尺寸。
Note：The dimensions of floor plans are all structural dimensions in millimeter.

10.發展項目的住宅物業的樓面平面圖

FLOOR PLANS OF RESIDENTIAL PROPERTIES IN THE DEVELOPMENT

檢視 / 修改日期：2025年2月18日
Examination / Revision Date：18th February, 2025

30樓平面圖 30/F FLOOR PLAN

30樓B單位的改動工程包括：

- ① 改動間隔牆及門的位置或方向。
- ② 改動間隔牆。
- ③ 改動原本的布局。
- ④ 新增間隔牆及門。

Alteration works for Flat B, 30/F include:

- ① Location or direction of partition wall and door were altered.
- ② Partition wall was altered.
- ③ Original layout was altered.
- ④ Partition wall and door were added.



30樓A及B單位在發展項目落成後進行小型工程及/或獲《建築物條例》(第123章)豁免的工程而有所改動。該等改動的大概位置已在本樓面平面圖中作標示。

Flats A and B, 30/F have been altered by way of minor works and/or exempted works under the Building Ordinance (Cap. 123) after completion of the Development. The approximate locations of alterations are indicated on this floor plan.

30樓A單位的改動工程包括：

- ① 改動間隔牆及門的位置或方向。
- ② 改動間隔牆。
- ③ 改動原本的布局。
- ④ 新增間隔牆及門。
- ⑤ 拆除間隔牆及門。

Alteration works for Flat A, 30/F include:

- ① Location or direction of partition wall and door were altered.
- ② Partition wall was altered.
- ③ Original layout was altered.
- ④ Partition wall and door were added.
- ⑤ Partition wall and door were removed.



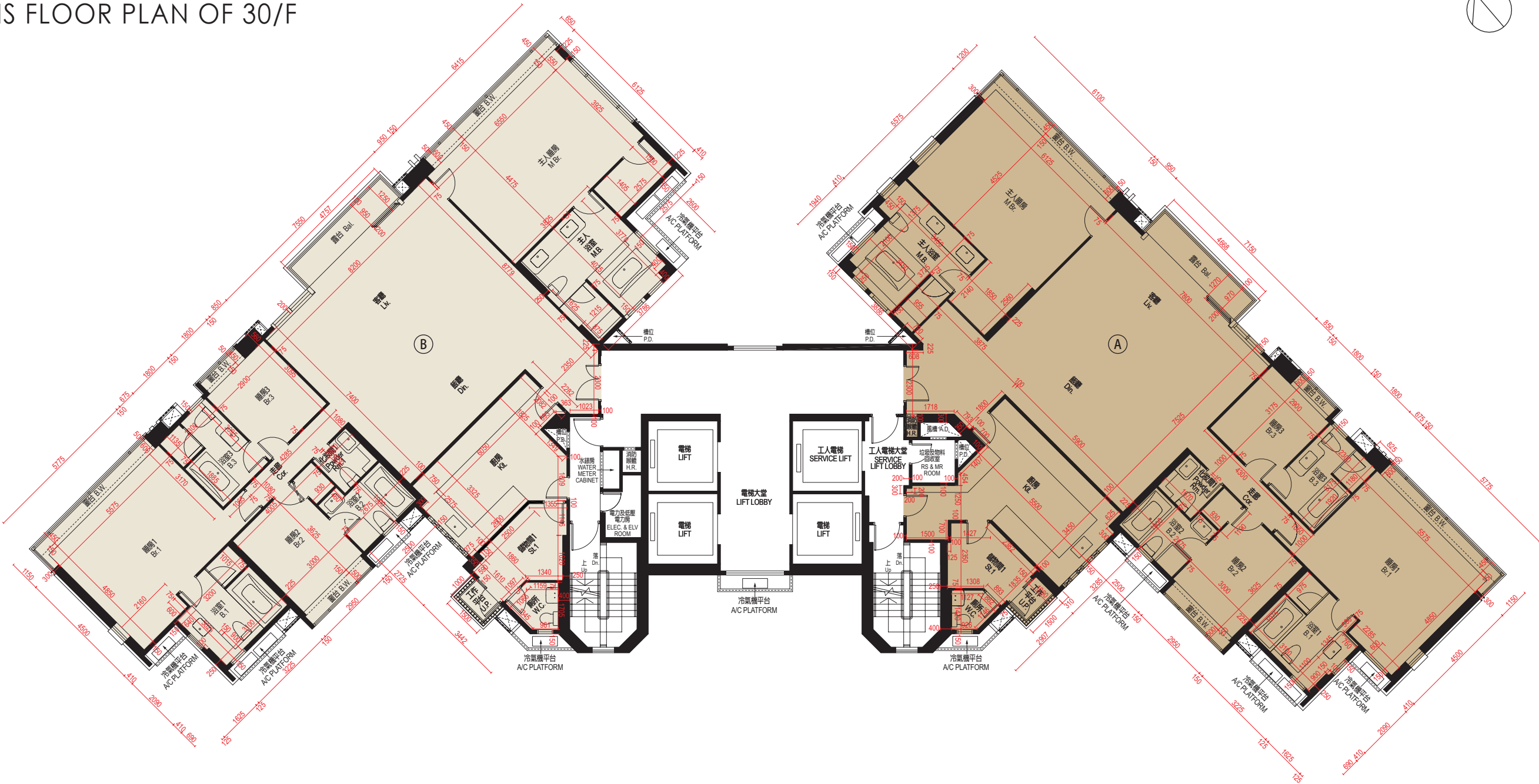
比例尺 SCALE： 0M(米) 5M(米)

| 每個住宅物業 Each Residential Property | 樓層 Floor | 單位 Flat | |
|---|-------------|---------------------|---------------------|
| | | A | B |
| 樓板(不包括灰泥)的厚度(毫米) Thickness of Floor Slab (excluding plaster) (mm) | 30樓 30/F | 150, 175 | 150, 175 |
| 層與層之間的高度(毫米) Floor-to-Floor Height (mm) | | 3150, 3300, 3500 | 3150, 3300, 3500 |

因住宅物業的較高樓層的結構牆的厚度遞減，較高樓層的內部面積，一般比較低樓層的內部面積稍大。
The internal areas of the residential properties on the upper floors will generally be slightly larger than those on the lower floors because of the reducing thickness of the structural walls on the upper floors.

備註：平面圖所列數字為以毫米標示之建築結構尺寸。
Note：The dimensions of floor plans are all structural dimensions in millimeter.

30樓之現狀間隔平面圖
AS-IS FLOOR PLAN OF 30/F



| 每個住宅物業 Each Residential Property | 樓層 Floor | 單位 Flat | |
|---|-------------|---------------------|---------------------|
| | | A | B |
| 樓板(不包括灰泥)的厚度(毫米) Thickness of Floor Slab (excluding plaster) (mm) | 30樓 30/F | 150, 175 | 150, 175 |
| 層與層之間的高度(毫米) Floor-to-Floor Height (mm) | | 3150, 3300, 3500 | 3150, 3300, 3500 |

比例尺 SCALE：  0M(米) 5M(米)

因住宅物業的較高樓層的結構牆的厚度遞減，較高樓層的內部面積，一般比較低樓層的內部面積稍大。
The internal areas of the residential properties on the upper floors will generally be slightly larger than those on the lower floors because of the reducing thickness of the structural walls on the upper floors.

備註：平面圖所列數字為以毫米標示之建築結構尺寸。
Note：The dimensions of floor plans are all structural dimensions in millimeter.

10.發展項目的住宅物業的樓面平面圖
FLOOR PLANS OF RESIDENTIAL PROPERTIES IN THE DEVELOPMENT

檢視 / 修改日期：2025年2月18日
Examination / Revision Date : 18th February, 2025

31樓平面圖(複式低層) 31/F FLOOR PLAN (LOWER DUPLEX)

31樓連32樓B單位的複式低層改動工程包括：

- 1 改動間隔牆及門的位置或方向。
- 2 改動原本的布局。
- 3 拆除間隔牆及門，並新增趟摺門。
- 4 改動間隔牆。

Alteration works for lower duplex of Flat B, 31/F & 32/F include:

- 1 Location or direction of partition wall and door were altered.
- 2 Original layout was altered.
- 3 Partition wall and door were removed and slide-folding door was added.
- 4 Partition wall was altered.



31樓連32樓A及B單位在發展項目落成後進行小型工程及/或獲《建築物條例》(第123章) 豁免的工程而有所改動。該等改動的大概位置已在本樓面平面圖中作標示。
Flats A and B, 31/F & 32/F have been altered by way of minor works and/or exempted works under the Building Ordinance (Cap. 123) after completion of the Development. The approximate locations of alterations are indicated on this floor plan.

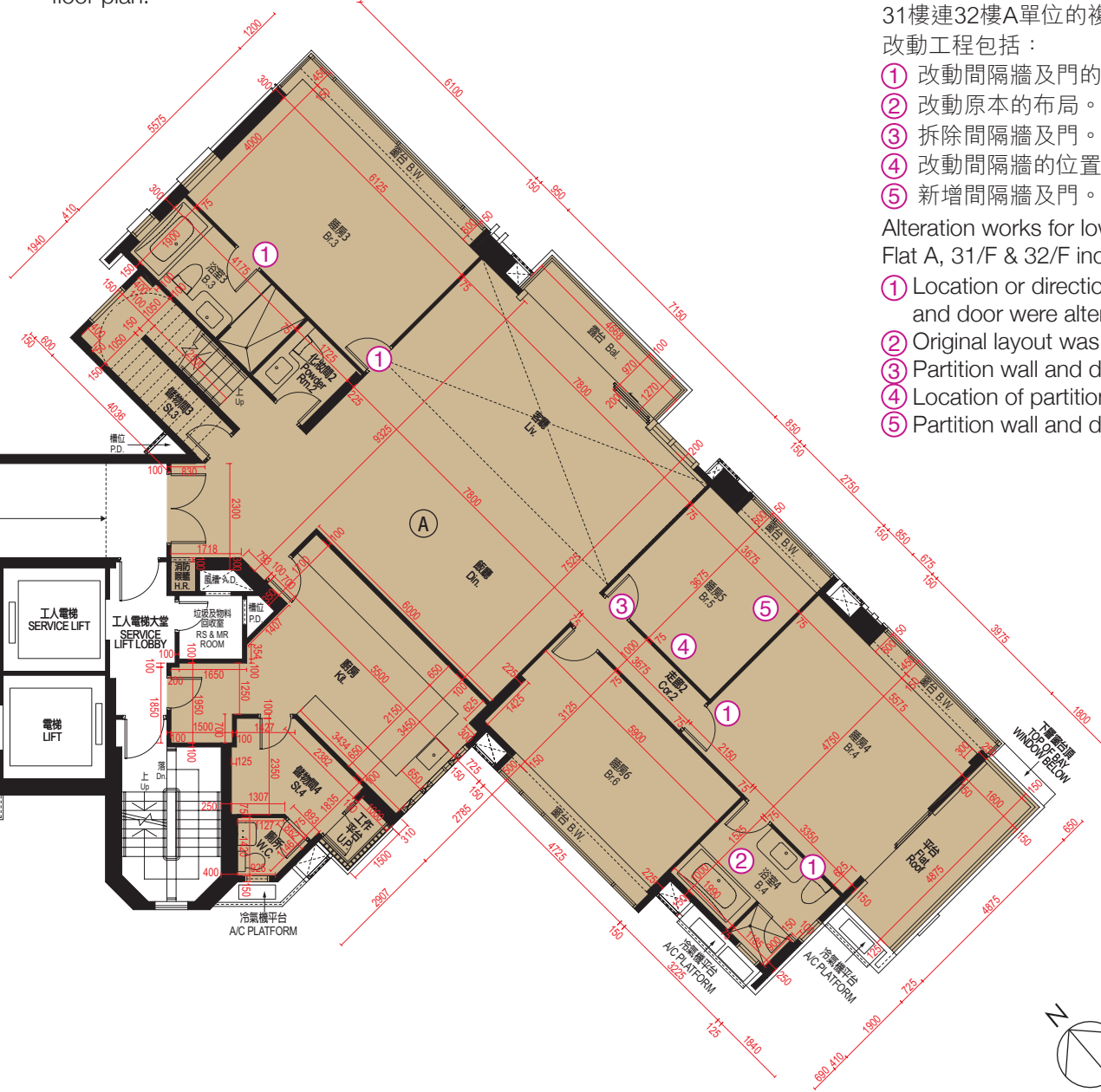
31樓連32樓A單位的複式低層

改動工程包括：

- 1 改動間隔牆及門的位置或方向。
- 2 改動原本的布局。
- 3 拆除間隔牆及門。
- 4 改動間隔牆的位置。
- 5 新增間隔牆及門。

Alteration works for lower duplex of Flat A, 31/F & 32/F include:

- 1 Location or direction of partition wall and door were altered.
- 2 Original layout was altered.
- 3 Partition wall and door were removed.
- 4 Location of partition wall was altered.
- 5 Partition wall and door were added.



| 每個住宅物業 Each Residential Property | 樓層 Floor | 單位 Flat | |
|---|-------------|---------------------------|---------------------------|
| | | A | B |
| 樓板(不包括灰泥)的厚度(毫米) Thickness of Floor Slab (excluding plaster) (mm) | 31樓 31/F | 150, 175 | 150, 175 |
| 層與層之間的高度(毫米) Floor-to-Floor Height (mm) | | 3150, 3300, 3500, 6700 | 3150, 3300, 3500, 6700 |

比例尺 SCALE : 0M(米) 5M(米)

因住宅物業的較高樓層的結構牆的厚度遞減，較高樓層的內部面積，一般比較低樓層的內部面積稍大。
The internal areas of the residential properties on the upper floors will generally be slightly larger than those on the lower floors because of the reducing thickness of the structural walls on the upper floors.

備註：平面圖所列數字為以毫米標示之建築結構尺寸。
Note: The dimensions of floor plans are all structural dimensions in millimeter.

31樓之現狀間隔平面圖(複式低層)
AS-IS FLOOR PLAN OF 31/F
(LOWER DUPLEX)



| 每個住宅物業 Each Residential Property | 樓層 Floor | 單位 Flat | |
|---|-------------|---------------------------|---------------------------|
| | | A | B |
| 樓板(不包括灰泥)的厚度(毫米) Thickness of Floor Slab (excluding plaster) (mm) | 31樓 31/F | 150, 175 | 150, 175 |
| 層與層之間的高度(毫米) Floor-to-Floor Height (mm) | | 3150, 3300, 3500, 6700 | 3150, 3300, 3500, 6700 |

比例尺 SCALE : 0M(米) 5M(米)

因住宅物業的較高樓層的結構牆的厚度遞減，較高樓層的內部面積，一般比較低樓層的內部面積稍大。
The internal areas of the residential properties on the upper floors will generally be slightly larger than those on the lower floors because of the reducing thickness of the structural walls on the upper floors.

備註：平面圖所列數字為以毫米標示之建築結構尺寸。
Note：The dimensions of floor plans are all structural dimensions in millimeter.

10.發展項目的住宅物業的樓面平面圖
FLOOR PLANS OF RESIDENTIAL PROPERTIES IN THE DEVELOPMENT

檢視 / 修改日期：2025年2月18日
Examination / Revision Date : 18th February, 2025

32樓平面圖(複式高層) 32/F FLOOR PLAN (UPPER DUPLEX)

31樓連32樓B單位的複式高層改動工程包括：

- 1 改動間隔牆及門的位置或方向。
- 2 改動原本的布局。
- 3 新增嵌入式衣櫃。
- 4 新增間隔牆及門並整合成儲物間1。
- 5 移除消防喉轆及間隔牆。
- 6 改動消防喉轆的位置。

Alteration works for upper duplex of Flat B, 31/F & 32/F include:

- 1 Location or direction of partition wall and door were altered.
- 2 Original layout was altered.
- 3 Built-in wardrobe was added.
- 4 Partition wall and door were added and integrated into Store Room 1.
- 5 Hose reel and partition wall were removed.
- 6 Location of hose reel was altered.



31樓連32樓A及B單位在發展項目落成後進行小型工程及/或獲《建築物條例》(第123章) 豁免的工程而有所改動。該等改動的大概位置已在本樓面平面圖中作標示。
Flats A and B, 31/F & 32/F have been altered by way of minor works and/or exempted works under the Building Ordinance (Cap. 123) after completion of the Development. The approximate locations of alterations are indicated on this floor plan.

31樓連32樓A單位的複式高層改動工程包括：

- 1 改動間隔牆及門的位置或方向。
- 2 新增間隔牆及門並整合成儲物間1。
- 3 新增間隔牆及門並整合成浴室1B。
- 4 改動原本的布局。
- 5 改動間隔牆的位置。
- 6 拆除間隔牆。
- 7 改動消防喉轆的位置。
- 8 新增間隔牆及門。
- 9 拆除間隔牆並新增門。
- 10 改為單掩門。

Alteration works for upper duplex of Flat A, 31/F & 32/F include:

- 1 Location or direction of partition wall and door were altered.
- 2 Partition wall and door were added and integrated into Store Room 1.
- 3 Partition wall and door were added and integrated into Bathroom 1B.
- 4 Original layout was altered.
- 5 Location of partition wall was altered.
- 6 Partition wall was removed.
- 7 Location of hose reel was altered.
- 8 Partition wall and door were added.
- 9 Partition wall was removed and door was added.
- 10 Door was replaced by single swing door.



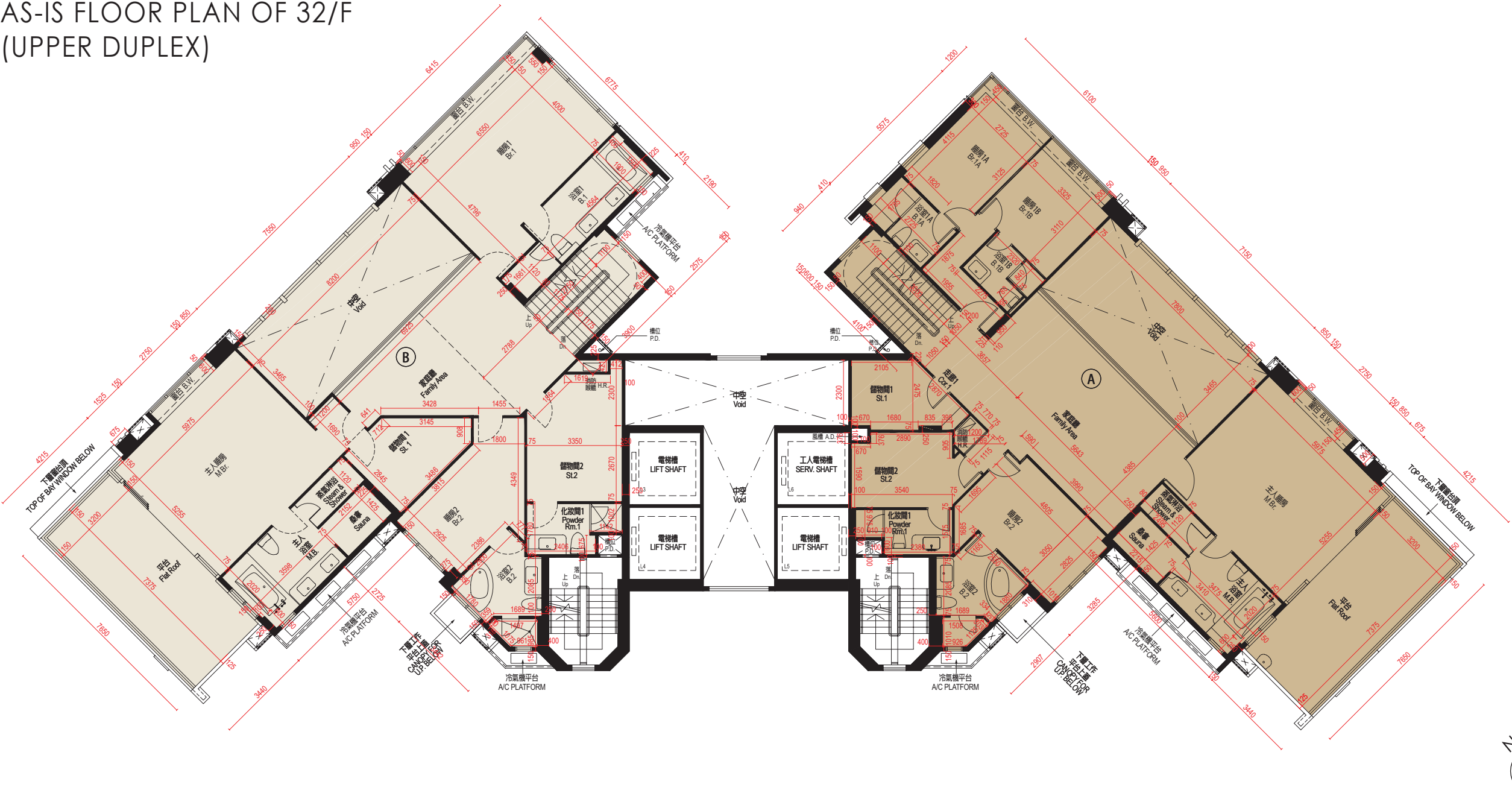
| 每個住宅物業 Each Residential Property | 樓層 Floor | 單位 Flat | |
|--|-------------|----------|---------------|
| | | A | B |
| 樓板(不包括灰泥)的厚度(毫米) Thickness of Floor Slab (excluding plaster) (mm) | 32樓 32/F | 150, 200 | 150, 175, 200 |
| 層與層之間的高度(毫米) Floor-to-Floor Height (mm) | | 3500 | 3500 |

比例尺 SCALE : 0M(米) 5M(米)

因住宅物業的較高樓層的結構牆的厚度遞減，較高樓層的內部面積，一般比較低樓層的內部面積稍大。
The internal areas of the residential properties on the upper floors will generally be slightly larger than those on the lower floors because of the reducing thickness of the structural walls on the upper floors.

備註：平面圖所列數字為以毫米標示之建築結構尺寸。
Note : The dimensions of floor plans are all structural dimensions in millimeter.

32樓之現狀間隔平面圖(複式高層)
AS-IS FLOOR PLAN OF 32/F
(UPPER DUPLEX)



| 每個住宅物業 Each Residential Property | 樓層 Floor | 單位 Flat | |
|---|-------------|----------|---------------|
| | | A | B |
| 樓板(不包括灰泥)的厚度(毫米) Thickness of Floor Slab (excluding plaster) (mm) | 32樓 32/F | 150, 200 | 150, 175, 200 |
| 層與層之間的高度(毫米) Floor-to-Floor Height (mm) | | 3500 | 3500 |

比例尺 SCALE : 0M(米) 5M(米)

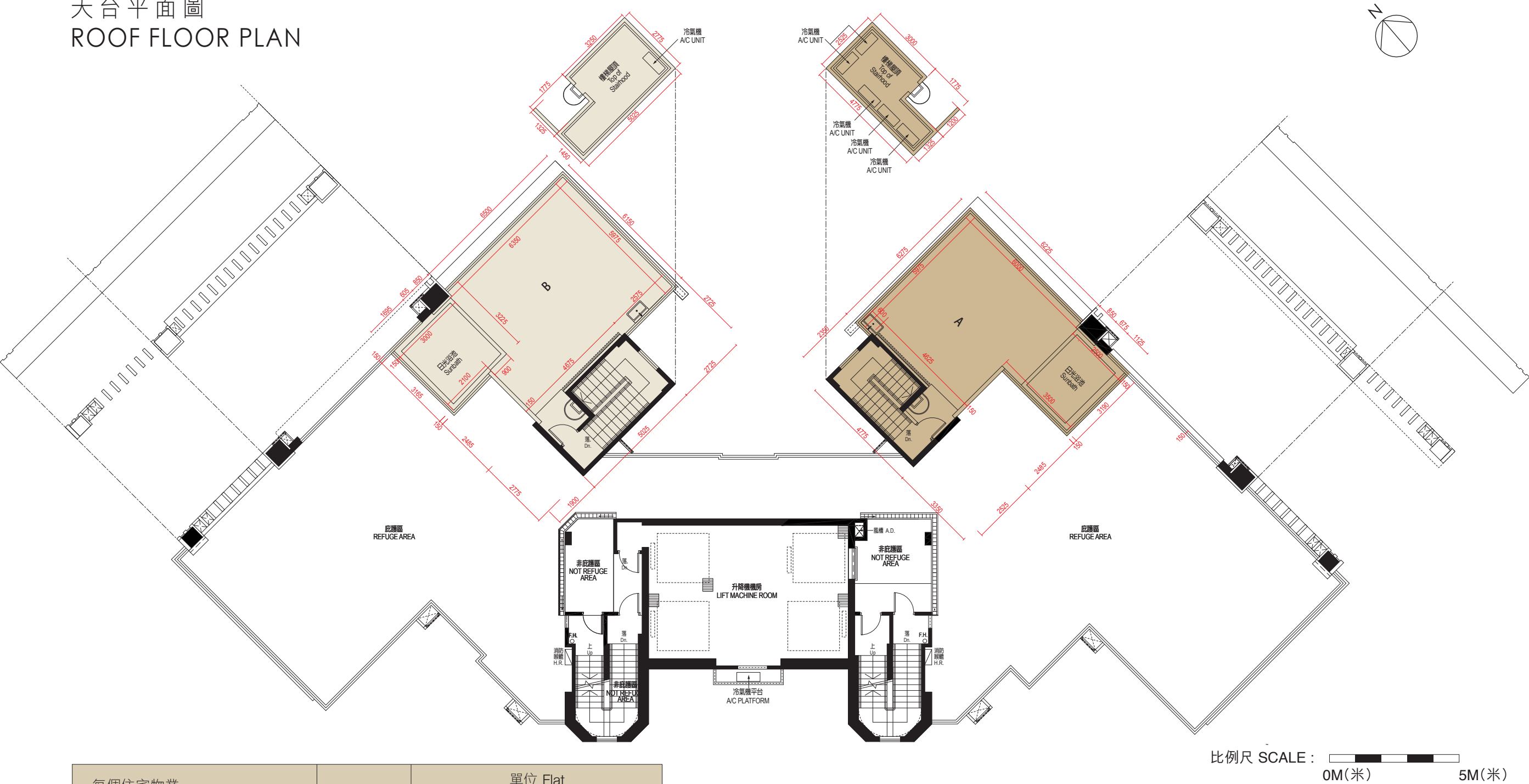
因住宅物業的較高樓層的結構牆的厚度遞減，較高樓層的內部面積，一般比較低樓層的內部面積稍大。
The internal areas of the residential properties on the upper floors will generally be slightly larger than those on the lower floors because of the reducing thickness of the structural walls on the upper floors.

備註：平面圖所列數字為以毫米標示之建築結構尺寸。
Note：The dimensions of floor plans are all structural dimensions in millimeter.

10.發展項目的住宅物業的樓面平面圖

FLOOR PLANS OF RESIDENTIAL PROPERTIES IN THE DEVELOPMENT

天台平面圖
ROOF FLOOR PLAN



| 每個住宅物業 Each Residential Property | 樓層 Floor | 單位 Flat | |
|---|--|--------------------|---|
| | | A | B |
| 樓板(不包括灰泥)的厚度(毫米) Thickness of Floor Slab (excluding plaster) (mm) | 天台/水箱層 Roof/ Water Tank Floor | 不適用 Not Applicable | |
| 層與層之間的高度(毫米) Floor-to-Floor Height (mm) | | | |

梯屋頂蓋平台只供維修時使用，其面積不會包括於平台面積或天台面積之內。
The flat roof on top of the stairhood is for maintenance only and its area will not be included in either the area of flat roof or area of the roof.

因住宅物業的較高樓層的結構牆的厚度遞減，較高樓層的內部面積，一般比較低樓層的內部面積稍大。
The internal areas of the residential properties on the upper floors will generally be slightly larger than those on the lower floors because of the reducing thickness of the structural walls on the upper floors.

備註：平面圖所列數字為以毫米標示之建築結構尺寸。
Note：The dimensions of floor plans are all structural dimensions in millimeter.