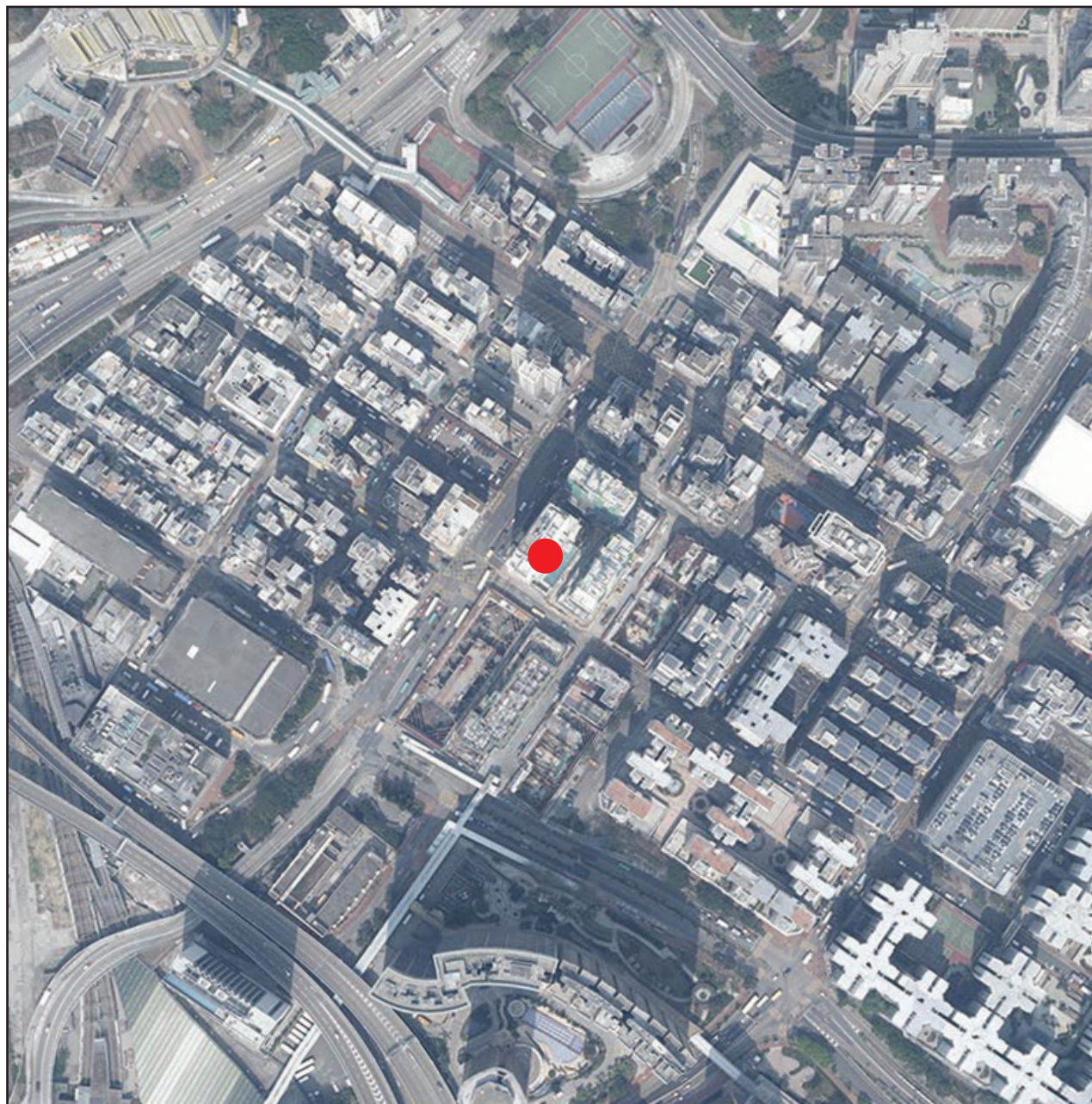


7 期數的鳥瞰照片 AERIAL PHOTOGRAPH OF THE PHASE



摘錄自地政總署測繪處於2024年3月8日在紅磡6,000呎飛行高度拍攝之鳥瞰照片，編號E218397C。

Adopted from part of the aerial photograph taken by the Survey and Mapping Office of Lands Department at a flying height of 6,000 feet in Hung Hom. Photo No. E218397C, dated 8th March 2024.

備註：因技術性問題，此鳥瞰照片所顯示的範圍超過《一手住宅物業銷售條例》的規定。

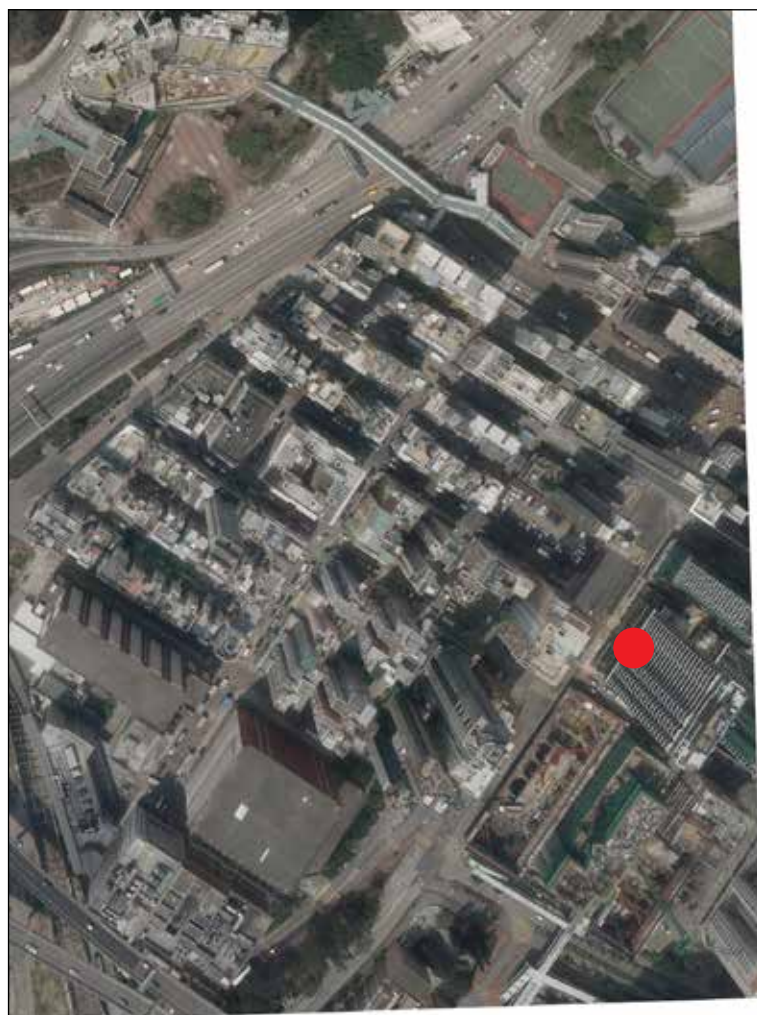
Note: Due to technical reasons, this aerial photograph has shown more than the area required under the Residential Properties (First-hand Sales) Ordinance.



期數的位置
Location of the Phase

香港特別行政區政府地政總署測繪處 © 版權所有，未經許可，不得複製。
Survey and Mapping Office, Lands Department, The Government of HKSAR © Copyright reserved – reproduction by permission only.

7 期數的鳥瞰照片 AERIAL PHOTOGRAPH OF THE PHASE



This blank area falls outside the coverage of the aerial photograph of the phase
關乎期數的鳥瞰照片並不覆蓋本空白範圍

摘錄自地政總署測繪處於2024年3月20日在紅磡2,000呎飛行高度拍攝之鳥瞰照片，編號E221826C。
Adopted from part of the aerial photograph taken by the Survey and Mapping Office of Lands Department at a flying height of 2,000 feet in Hung Hom. Photo No. E221826C, dated 20th March 2024.

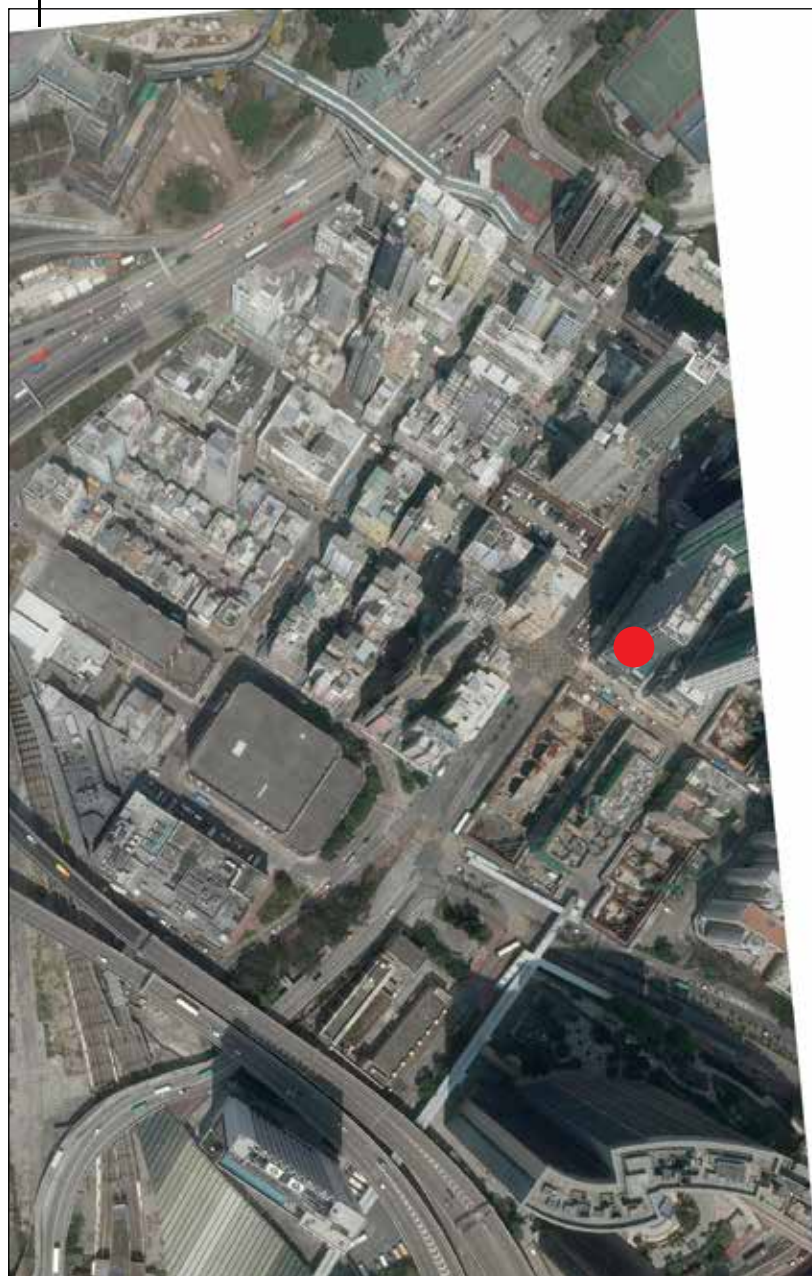
備註：因技術性問題，此鳥瞰照片所顯示的範圍超過《一手住宅物業銷售條例》的規定。
Note: Due to technical reasons, this aerial photograph has shown more than the area required under the Residential Properties (First-hand Sales) Ordinance.

● 期數的位置
Location of the Phase

香港特別行政區政府地政總署測繪處 © 版權所有，未經許可，不得複製。
Survey and Mapping Office, Lands Department, The Government of HKSAR © Copyright reserved – reproduction by permission only.

7 期數的鳥瞰照片 AERIAL PHOTOGRAPH OF THE PHASE

This blank area falls outside the coverage of the aerial photograph of the phase
關乎期數的鳥瞰照片並不覆蓋本空白範圍



This blank area falls outside the coverage of the aerial photograph of the phase
關乎期數的鳥瞰照片並不覆蓋本空白範圍

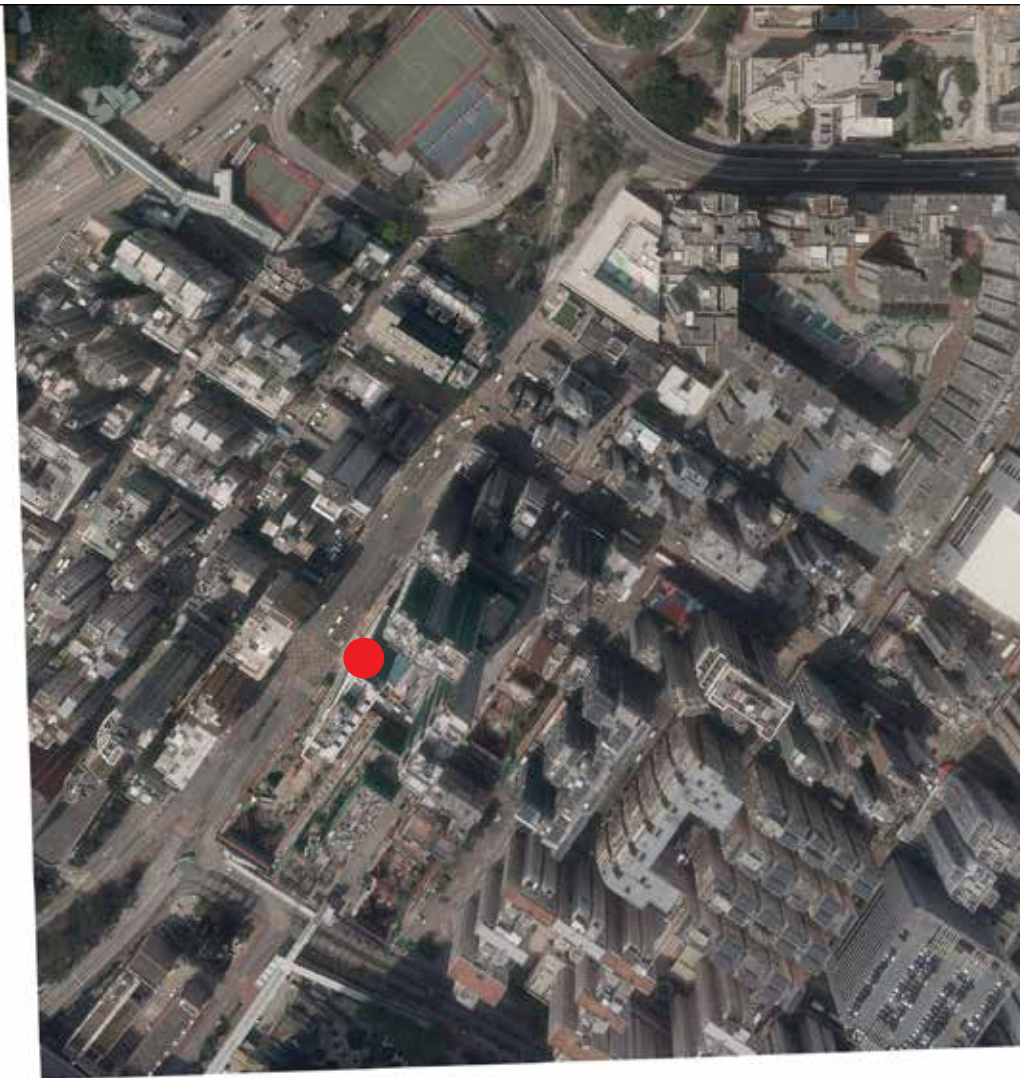
摘錄自地政總署測繪處於2024年3月20日在紅磡2,000呎飛行高度拍攝之鳥瞰照片，編號E220045C。
Adopted from part of the aerial photograph taken by the Survey and Mapping Office of Lands Department at a flying height of 2,000 feet in Hung Hom. Photo No. E220045C, dated 20th March 2024.

備註：因技術性問題，此鳥瞰照片所顯示的範圍超過《一手住宅物業銷售條例》的規定。
Note: Due to technical reasons, this aerial photograph has shown more than the area required under the Residential Properties (First-hand Sales) Ordinance.

● 期數的位置
Location of the Phase

香港特別行政區政府地政總署測繪處 © 版權所有，未經許可，不得複製。
Survey and Mapping Office, Lands Department, The Government of HKSAR © Copyright reserved – reproduction by permission only.

7 期數的鳥瞰照片 AERIAL PHOTOGRAPH OF THE PHASE



This blank area falls outside the coverage of the aerial photograph of the phase
關乎期數的鳥瞰照片並不覆蓋本空白範圍

摘錄自地政總署測繪處於2024年3月20日在紅磡2,000呎飛行高度拍攝之鳥瞰照片，編號E221824C。
Adopted from part of the aerial photograph taken by the Survey and Mapping Office of Lands Department at a flying height of 2,000 feet in Hung Hom. Photo No. E221824C, dated 20th March 2024.

備註：因技術性問題，此鳥瞰照片所顯示的範圍超過《一手住宅物業銷售條例》的規定。
Note: Due to technical reasons, this aerial photograph has shown more than the area required under the Residential Properties (First-hand Sales) Ordinance.

● 期數的位置
Location of the Phase

香港特別行政區政府地政總署測繪處 © 版權所有，未經許可，不得複製。
Survey and Mapping Office, Lands Department, The Government of HKSAR © Copyright reserved – reproduction by permission only.

7 期數的鳥瞰照片 AERIAL PHOTOGRAPH OF THE PHASE

This blank area falls outside the coverage of the aerial photograph of the phase
關乎期數的鳥瞰照片並不覆蓋空白範圍



摘錄自地政總署測繪處於2024年3月20日在紅磡2,000呎飛行高度拍攝之鳥瞰照片，編號E220047C。
Adopted from part of the aerial photograph taken by the Survey and Mapping Office of Lands Department at a flying height of 2,000 feet in Hung Hom. Photo No. E220047C, dated 20th March 2024.

備註：因技術性問題，此鳥瞰照片所顯示的範圍超過《一手住宅物業銷售條例》的規定。
Note: Due to technical reasons, this aerial photograph has shown more than the area required under the Residential Properties (First-hand Sales) Ordinance.

● 期數的位置
Location of the Phase

香港特別行政區政府地政總署測繪處 © 版權所有，未經許可，不得複製。
Survey and Mapping Office, Lands Department, The Government of HKSAR © Copyright reserved – reproduction by permission only.