

鳥瞰照片並不覆蓋本空白範圍
This blank area falls outside the coverage of the relevant Aerial Photograph



● 期數的位置
Location of the Phase



摘錄自地政總署測繪處在6,900呎的飛行高度拍攝之鳥瞰照片，照片編號為E239543C，飛行日期：2024年11月1日。

Adopted from part of the aerial photograph taken by the Survey and Mapping Office of the Lands Department at a flying height of 6,900 feet, Photo No. E239543C, dated of flight: 1st November 2024.

香港特別行政區政府地政總署測繪處©版權所有，未經許可，不得複製。

Survey and Mapping Office, Lands Department, The Government of HKSAR © Copyright reserved – reproduction by permission only.

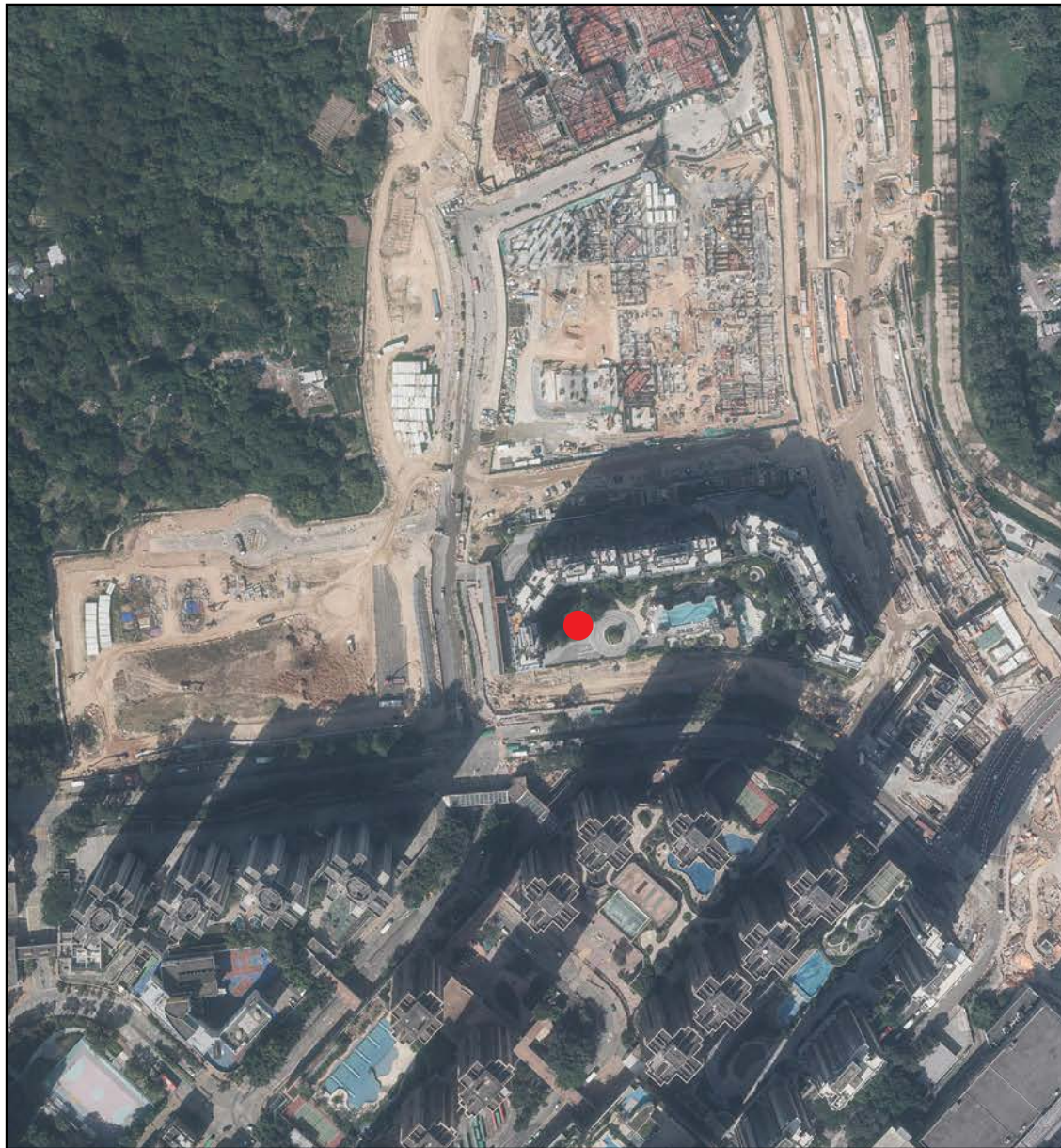
備註：1. 期數的鳥瞰照片之副本可於售樓處開放時間內免費查閱。

2. 由於期數的邊界不規則的技術原因，此照片所顯示的範圍可能超過《一手住宅物業銷售條例》的規定範圍。

Note：1. Copy of the aerial photograph of the Phase is available for free inspection at the sales office during opening hours.

2. The aerial photograph may show more than the area required under the Residential Properties (First-hand Sales) Ordinance due to technical reason that the boundary of the Phase is irregular.

7 期數的鳥瞰照片 AERIAL PHOTOGRAPH OF THE PHASE



鳥瞰照片並不覆蓋
本空白範圍
This blank area falls
outside the coverage of
the relevant
Aerial Photograph

● 期數的位置
Location of the Phase



摘錄自地政總署測繪處在6,900呎的飛行高度拍攝之鳥瞰照片，照片編號為E239542C，飛行日期：2024年11月1日。

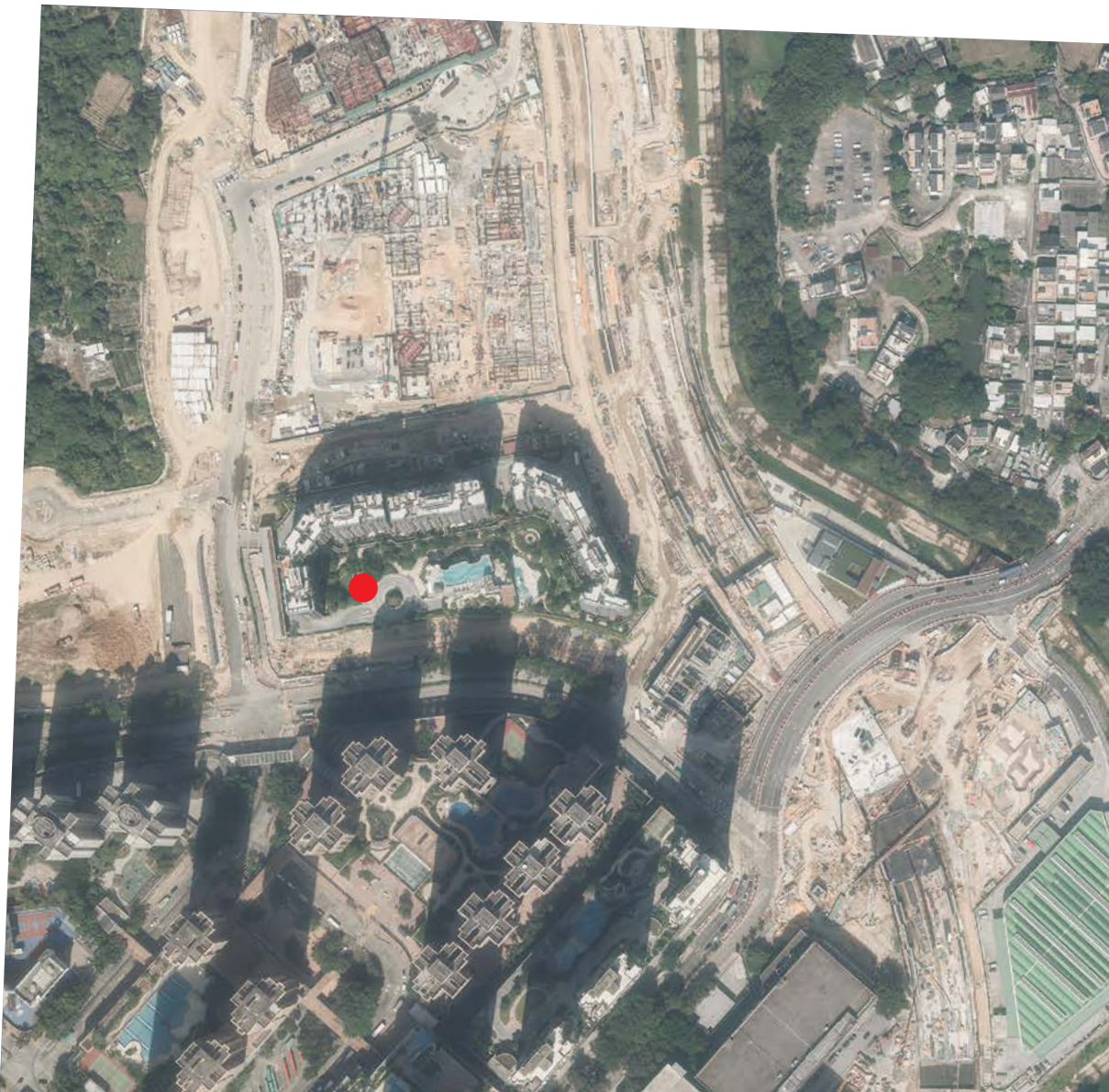
Adopted from part of the aerial photograph taken by the Survey and Mapping Office of the Lands Department at a flying height of 6,900 feet, Photo No. E239542C, dated of flight: 1st November 2024.

香港特別行政區政府地政總署測繪處©版權所有，未經許可，不得複製。
Survey and Mapping Office, Lands Department, The Government of HKSAR © Copyright reserved – reproduction by permission only.

備註：1. 期數的鳥瞰照片之副本可於售樓處開放時間內免費查閱。
2. 由於期數的邊界不規則的技術原因，此照片所顯示的範圍可能超過《一手住宅物業銷售條例》的規定範圍。

Note：1. Copy of the aerial photograph of the Phase is available for free inspection at the sales office during opening hours.
2. The aerial photograph may show more than the area required under the Residential Properties (First-hand Sales) Ordinance due to techical reason that the boundary of the Phase is irregular.

鳥瞰照片並不覆蓋本空白範圍
This blank area falls outside the coverage of the relevant Aerial Photograph



● 期數的位置
Location of the Phase



摘錄自地政總署測繪處在6,900呎的飛行高度拍攝之鳥瞰照片，照片編號為E238624C，飛行日期：2024年11月1日。

Adopted from part of the aerial photograph taken by the Survey and Mapping Office of the Lands Department at a flying height of 6,900 feet, Photo No. E238624C, dated of flight: 1st November 2024.

香港特別行政區政府地政總署測繪處©版權所有，未經許可，不得複製。

Survey and Mapping Office, Lands Department, The Government of HKSAR © Copyright reserved – reproduction by permission only.

備註：1. 期數的鳥瞰照片之副本可於售樓處開放時間內免費查閱。

2. 由於期數的邊界不規則的技術原因，此照片所顯示的範圍可能超過《一手住宅物業銷售條例》的規定範圍。

Note：1. Copy of the aerial photograph of the Phase is available for free inspection at the sales office during opening hours.

2. The aerial photograph may show more than the area required under the Residential Properties (First-hand Sales) Ordinance due to technical reason that the boundary of the Phase is irregular.